

UNITED STATES
DEPARTMENT OF THE INTERIOR
GEOLOGICAL SURVEY

30-005-62244

5. LEASE DESIGNATION AND SERIAL NO.

NM-23491

6. IF INDIAN, ALLOTTEE OR TRIBE NAME

7. UNIT AGREEMENT NAME

Flying "H" Ranch Unit

8. FARM OR LEASE NAME

Flying "H" Ranch Unit to 3

9. WELL NO.

Tr 3-1 #1

10. FIELD AND POOL, OR WILDCAT

Wildcat - Also

11. SEC., T., R., M., OR BLK.
AND SURVEY OR AREA

Sec. 14-T15S-R19E

12. COUNTY OR PARISH 13. STATE

Chaves

NM

APPLICATION FOR PERMIT TO DRILL, DEEPEN, OR PLUG BACK

1a. TYPE OF WORK

DRILL ☒DEEPEN ☐PLUG BACK ☐

b. TYPE OF WELL

OIL ☐
WELLGAS ☒
WELL

OTHER

SINGLE ☐MULTIPLE ☐

2. NAME OF OPERATOR

McClellan Oil Corporation ✓

3. ADDRESS OF OPERATOR

P.O. Drawer 730, Roswell, NM 88202

4. LOCATION OF WELL (Report location clearly and in accordance with an
At surface

1780 1988' FSL & 660' FEL

At proposed prod. zone

State requirements.

O.C.D.
ARTESIA, OFFICE

ut. P

14. DISTANCE IN MILES AND DIRECTION FROM NEAREST TOWN OR POST OFFICE*

40 miles southwest of Roswell, NM

15. DISTANCE FROM PROPOSED*

LOCATION TO NEAREST
PROPERTY OR LEASE LINE, FT.
(Also to nearest drlg. unit line, if any)

660'

16. NO. OF ACRES IN LEASE

2560

17. NO. OF ACRES ASSIGNED
TO THIS WELL

160

18. DISTANCE FROM PROPOSED LOCATION*
TO NEAREST WELL, DRILLING, COMPLETED,
OR APPLIED FOR, ON THIS LEASE, FT.

NA

19. PROPOSED DEPTH

5500'

20. ROTARY OR CABLE TOOLS

Rotary

21. ELEVATIONS (Show whether DF, RT, GR, etc.)

5113' G.L. 5099' G.L.

22. APPROX. DATE WORK WILL START*

Jan. 23, 1985

23. PROPOSED CASING AND CEMENTING PROGRAM

SIZE OF HOLE	SIZE OF CASING	WEIGHT PER FOOT	SETTING DEPTH	QUANTITY OF CEMENT
16"	14"	48#	40'	5 yds.
12-1/4"	8-5/8"	24#	1100'	650 sx circulate
7-7/8"	5-1/2"	15.5#	5500'	350 sx

Will drill to approximately 5500' to test the Pre-basement formations. If production is indicated, will run casing and attempt completion.

*Is sales not dedicated*

IN ABOVE SPACE DESCRIBE PROPOSED PROGRAM: If proposal is to deepen or plug back, give data on present productive zone and proposed new productive zone. If proposal is to drill or deepen directionally, give pertinent data on subsurface locations and measured and true vertical depths. Give blowout preventer program, if any.

24.

SIGNED

Mark McClellan

TITLE

Geologist

DATE

01/02/85

(This space for Federal or State office use)

PERMIT NO.

APPROVAL DATE

S/Phil Kirk

APPROVED BY

TITLE

Area Manager

DATE

1-21-85

CONDITIONS OF APPROVAL, IF ANY:

STATE OF NEW MEXICO
ENERGY AND MINERALS DEPARTMENT

OIL CONSERVATION DIVISION
P. O. BOX 2088
SANTA FE, NEW MEXICO 87501

All distances must be from the outer boundaries of the Section.

RECEIVED BY

Form C-102
Revised 10-1-78

JAN 22 1985

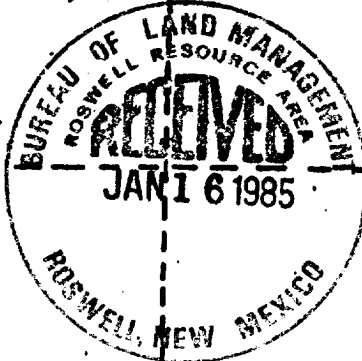
Operator McClellan Oil Corp.		Lease Flying "H" Ranch Unit		Tract G. C. D.	Well No. #1
Unit Letter P	Section 14	Township 15 South	Range 19 East	County ARTESIA, OFFICE Chaves	
Actual Footage Location of Well: 660 feet from the South line and 660 feet from the East line					
Ground Level Elev. 5099	Producing Formation Pre basement		Pool Wildcat	Dedicated Acreage 160 40 Acres	

1. Outline the acreage dedicated to the subject well by colored pencil or hatchure marks on the plat below.
2. If more than one lease is dedicated to the well, outline each and identify the ownership thereof (both as to working interest and royalty).
3. If more than one lease of different ownership is dedicated to the well, have the interests of all owners been consolidated by communitization, unitization, force-pooling, etc?
☐ Yes ☐ No If answer is "yes," type of consolidation _____

If answer is "no," list the owners and tract descriptions which have actually been consolidated. (Use reverse side of this form if necessary.) _____

No allowable will be assigned to the well until all interests have been consolidated (by communitization, unitization, forced-pooling, or otherwise) or until a non-standard unit, eliminating such interests, has been approved by the Division

Sec. 14, T. 15 S., R. 19 E., N.M.P.M.



CERTIFICATION

I hereby certify that the information contained herein is true and complete to the best of my knowledge and belief.

Mark McClellan

Name

Mark McClellan

Position

Geologist

Company

McClellan Oil Corporation

Date

December 28, 1984

I hereby certify that the well location shown on this plat was plotted from field notes of actual surveys made by me or under my supervision, and that the same is true and correct to the best of my knowledge and belief.

Date Surveyed

December 27, 1984

Registered Professional Engineer and/or Land Surveyor

John D. Jaques
John D. Jaques, P.E. & L.S.

Certificate No.

6290

310 640 00 1270 1600 1640 2110 2640 2000 1300 1000 600

All distances must be from the outer boundaries of the Section.

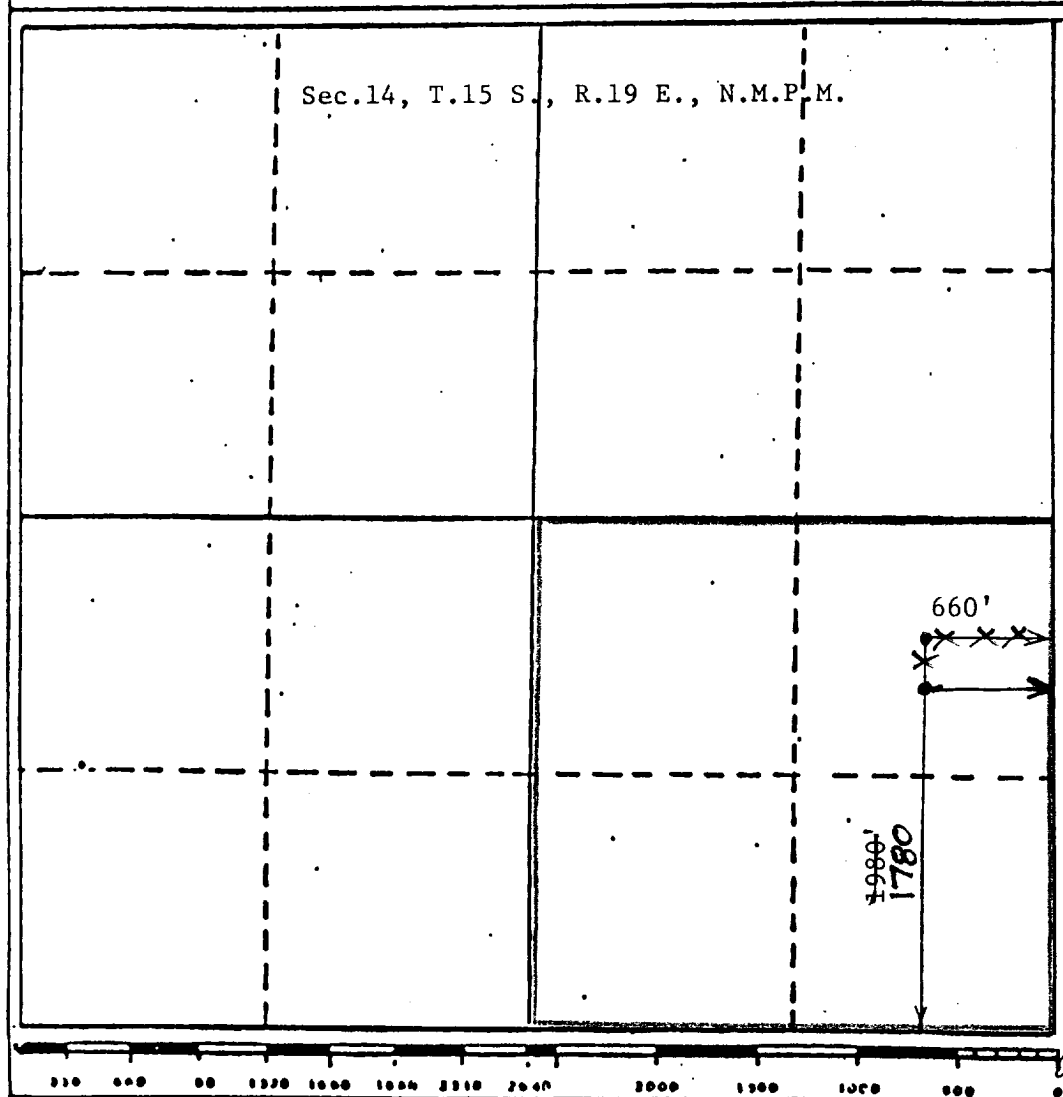
Operator McClellan Oil Corp.		Lease Flying "H" Ranch Unit Tract 3		Well No. 1
Unit Lessee I	Section 14	Township 15 South	Range 19 East	County Chaves
Actual Postage Location of Well: 1980 feet from the South line and 660 feet from the East line				
Ground Level Elev. 5113	Producing Formation Pre basement	Pool Wildcat	Dedicated Acreage 160.00 Acres	

1. Outline the acreage dedicated to the subject well by colored pencil or hatchure marks on the plat below.
2. If more than one lease is dedicated to the well, outline each and identify the ownership thereof (both as to working interest and royalty).
3. If more than one lease of different ownership is dedicated to the well, have the interests of all owners been consolidated by communitization, unitization, force-pooling, etc?

☐ Yes ☐ No If answer is "yes," type of consolidation _____

If answer is "no," list the owners and tract descriptions which have actually been consolidated. (Use reverse side of this form if necessary.) _____

No allowable will be assigned to the well until all interests have been consolidated (by communitization, unitization, forced-pooling, or otherwise) or until a non-standard unit, eliminating such interests, has been approved by the Division



CERTIFICATION

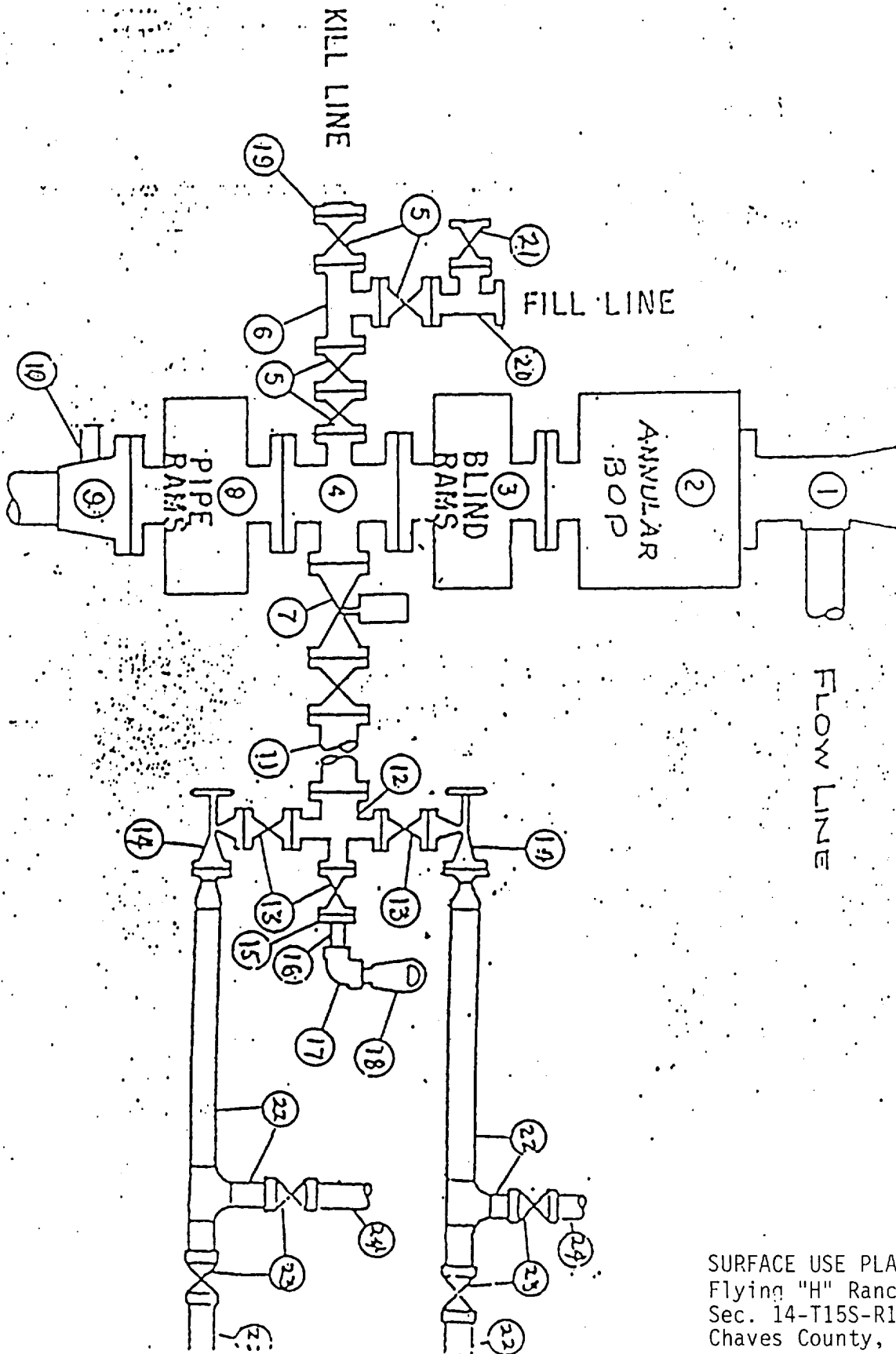
I hereby certify that the information contained herein is true and complete to the best of my knowledge and belief.

Mark McClellan

Name
Mark McClellan
Position
Geologist
Company
McClellan Oil Corporation
Date
December 28, 1984

I hereby certify that the well location shown on this plat was plotted from field notes of actual surveys made by me or under my supervision, and that the same is true and correct to the best of my knowledge and belief.

Date Surveyed
December 18, 1984
Registered Professional Engineer and/or Land Surveyor
John D. [Signature] P.E. & L.S.
Certificate No.
6290



SURFACE USE PLAN EXHIBIT "E"
 Flying "H" Ranch Unit Tr 3-1
 Sec. 14-T15S-R19E
 Chaves County, NM

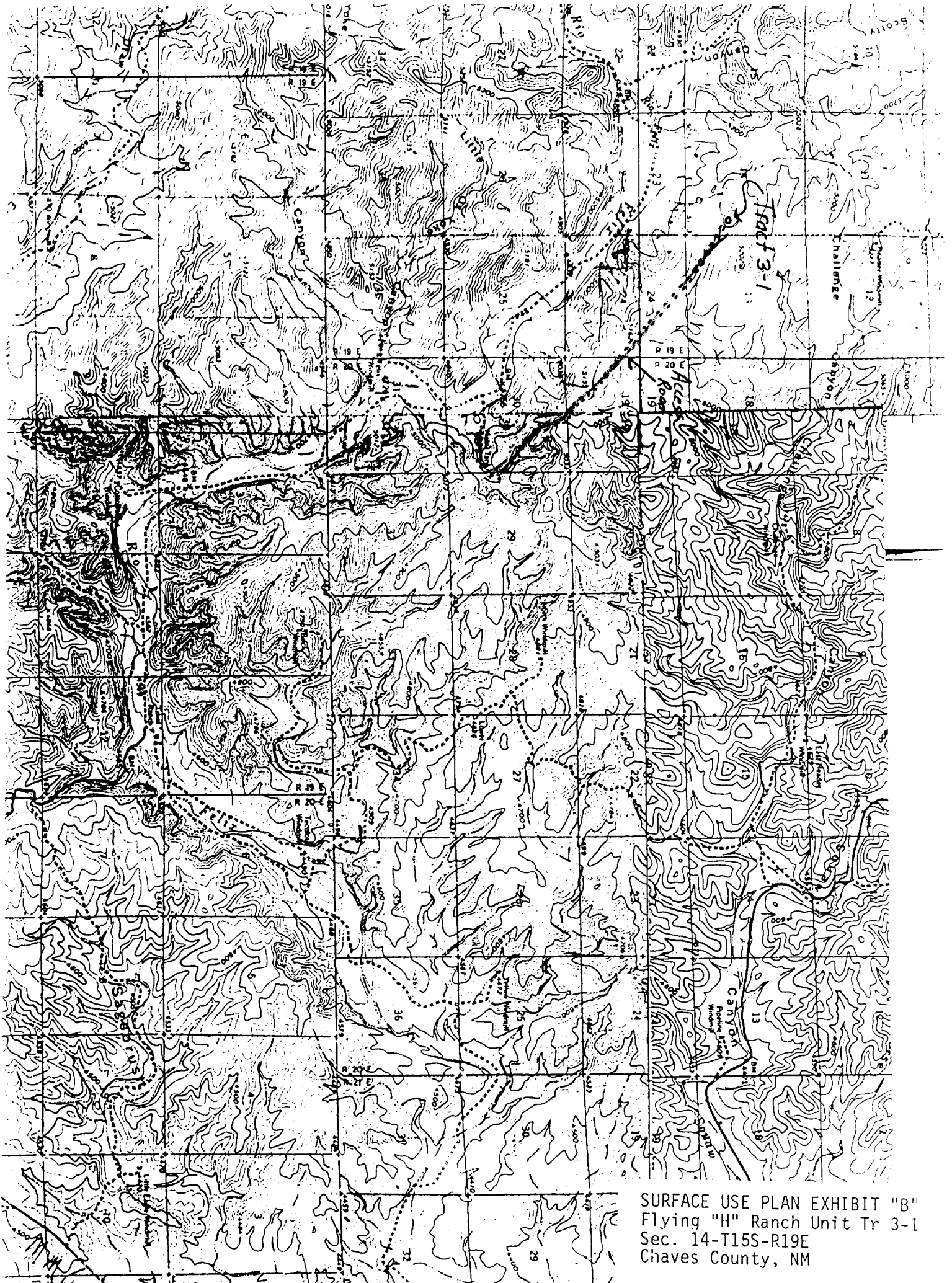
McClellan Oil Corp.
Flying "H" Ranch Unit Tract 3-1

REQUIREMENTS
(NTL-6)

1. Location: Sec. 14-T15S-R19E, 1980' FSL & 660' FEL
2. Elevation: 5113' G.L.
3. Geologic name of surface formation: See archaeological report
4. Type of drilling rig and associated equipment: Rotary
5. Proposed drilling depth and objective formation: 5500' Pre-basement
6. Estimated tops of geologic markers:

Yates	<u> </u>	Glorieta	<u>538'</u>	Wolfcamp	<u>3302'</u>
7-Rivers	<u> </u>	Tubb	<u>1872'</u>	Penn	<u>3784'</u>
Queen	<u> </u>	Abo	<u>2538'</u>	Basement	<u>5400'</u>
7. Estimated depths of any oil, water, or gas: Possible oil or gas above basement.
- 8-9. Proposed casing program:

<u>8-5/8" @ 1100' Grade</u>	<u>J-55</u>	<u>Wt. 24 lb.</u>	<u>Type Cement</u>	<u>Class "C"</u>
<u>5-1/2" @ 5500' Grade</u>	<u>J-55</u>	<u>Wt. 15.5 lb.</u>	<u>Type Cement</u>	<u>Class "C"</u>
10. Specifications for pressure control equipment and testing procedures:
Schaeffer type E 10" series 900 hydraulic BOP
11. Type and characteristics of drilling fluids: Drill to top of Abo with native mud. Mud up 100' above Abo with salt base gel, 45 visc., 9.5 lb/gal weight & 15 cc water loss.
12. Testing, logging, and coring programs: Will run DST if sufficient show warrants testing. Will run CNL-LDT, DLL-Micro SFL gamma ray logs.
13. Anticipated abnormal pressures or temperature: None anticipated
14. Anticipated commencement and completion date:
January 23, 1985 - March 15, 1985



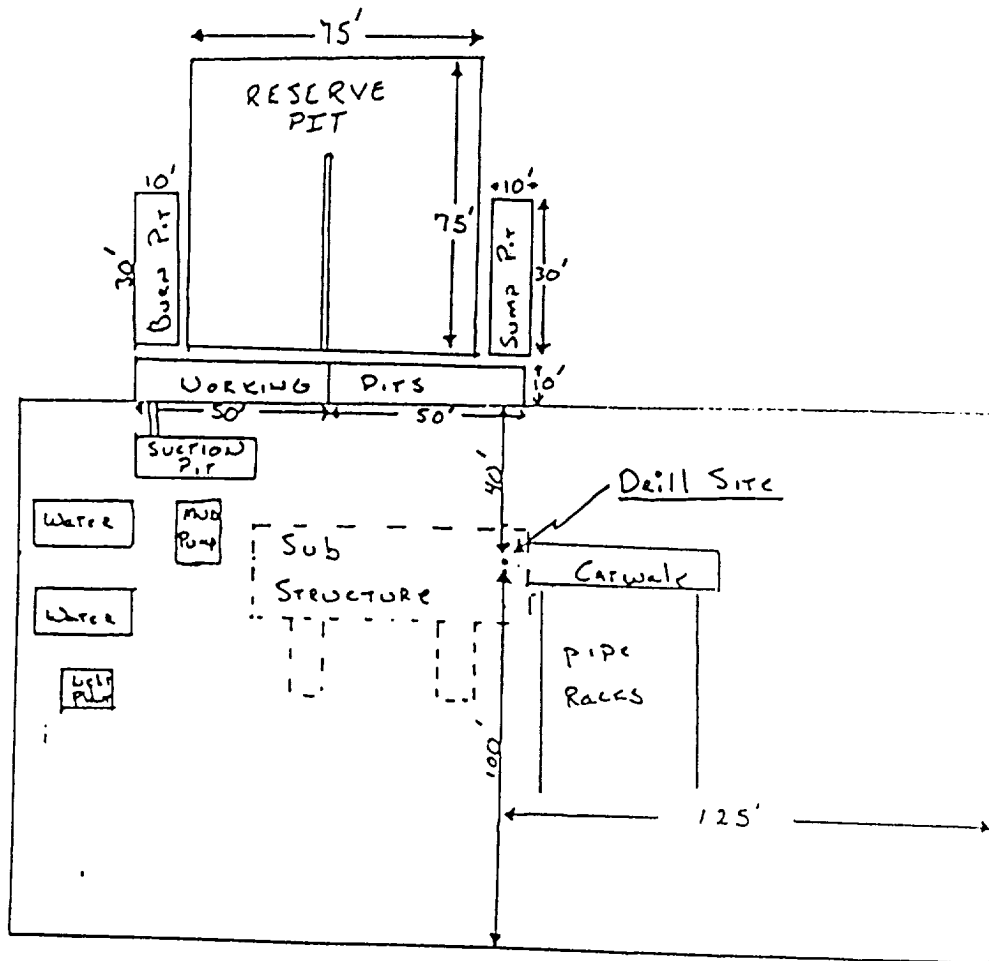
SURFACE USE PLAN EXHIBIT "B"
Flying "H" Ranch Unit Tr 3-1
Sec. 14-T15S-R19E
Chaves County, NM

McCLELLAN OIL CORPORATION
SUGGESTED PAD DIMENSIONS

Reserve Pits 4 ft. deep, plastic lined

Working pits 5 ft. deep

No cellar



Scale 1" = 50'