

UNITED STATES
DEPARTMENT OF THE INTERIOR
BUREAU OF LAND MANAGEMENT

OIL CONS. COMMISSION
SUBMIT IN THE
Drawer 80
Artesia, NM 88210
(Other instructions on reverse side)

Form approved.
Budget Bureau No. 1004-0136
Expires August 31, 1985

C/S

APPLICATION FOR PERMIT TO DRILL, DEEPEN, OR PLUG BACK

1a. TYPE OF WORK

DRILL ☒

DEEPEN ☐

PLUG BACK ☐

b. TYPE OF WELL

OIL
WELL ☐

GAS
WELL ☐

OTHER ☐

2. NAME OF OPERATOR

Frostman Oil Corporation ✓

3. ADDRESS OF OPERATOR

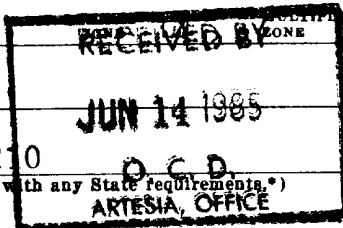
P.O. Box 161, Artesia, NM 88210

4. LOCATION OF WELL (Report location clearly and in accordance with any State requirements.)

At surface

660' FNL & 2310' FEL

At proposed prod. zone



14. DISTANCE IN MILES AND DIRECTION FROM NEAREST TOWN OR POST OFFICE*

20 miles Northwest of Loco Hills, NM

10. DISTANCE FROM PROPOSED*

LOCATION TO NEAREST
PROPERTY OR LEASE LINE, FT.
(Also to nearest drlg. unit line, if any)

18. DISTANCE FROM PROPOSED LOCATION*

TO NEAREST WELL, DRILLING, COMPLETED,
OR APPLIED FOR, ON THIS LEASE, FT.

16. NO. OF ACRES IN LEASE

320

17. NO. OF ACRES ASSIGNED
TO THIS WELL

40

19. PROPOSED DEPTH

3200'

20. ROTARY OR CABLE TOOLS

Rotary

21. ELEVATIONS (Show whether DF, RT, GR, etc.)

3712.7 GR

22. APPROX. DATE WORK WILL START*

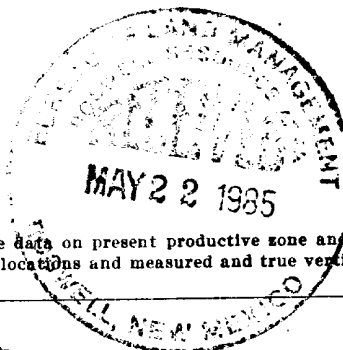
June 29, 1985

23.

PROPOSED CASING AND CEMENTING PROGRAM

SIZE OF HOLE	SIZE OF CASING	WEIGHT PER FOOT	SETTING DEPTH	QUANTITY OF CEMENT
12 1/4"	8 5/8"	24	150	100 SX C + 2% C.C.
7 7/8"	4 1/2"	10.5	3200	225 Sx Lite - 500 Sx C-50 Poz

Will cement 8 5/8" surface casing, circulate cement - WOC 12 hours, test at 600# for 30". Drill 7 7/8" hole to 3200'. Run Gamma-Neutron logs. If productive - run 4 1/2" casing. A Shaeffer BOP will be used. Brine water will be used for drilling fluid after setting surface mud up to 2900' to run logs.



Posted ID/ADIA HL 6-21-85

IN ABOVE SPACE DESCRIBE PROPOSED PROGRAM: If proposal is to deepen or plug back, give data on present productive zone and proposed new productive zone. If proposal is to drill or deepen directionally, give pertinent data on subsurface locations and measured and true vertical depths. Give blowout preventer program, if any.

24. FROSTMAN OIL CORPORATION

SIGNED

Clarence Forister
Clarence Forister

TITLE President

DATE May 21, 1985

(This space for Federal or State office use)

PERMIT NO.

APPROVAL DATE

APPROVED BY

S/Levi Deike, Acting

TITLE Area Manager

DATE 6-12-85

CONDITIONS OF APPROVAL, IF ANY:

*See Instructions On Reverse Side

Title 18 U.S.C. Section 1001, makes it a crime for any person knowingly and willfully to make to any department or agency of the United States any false, fictitious or fraudulent statements or representations as to any matter within its jurisdiction.

N MEXICO OIL CONSERVATION COMMISS
WELL LOCATION AND ACREAGE DEDICATION PLAT

Form C-102
 Supersedes C-128
 Effective 1-1-65

All distances must be from the outer boundaries of the Section.

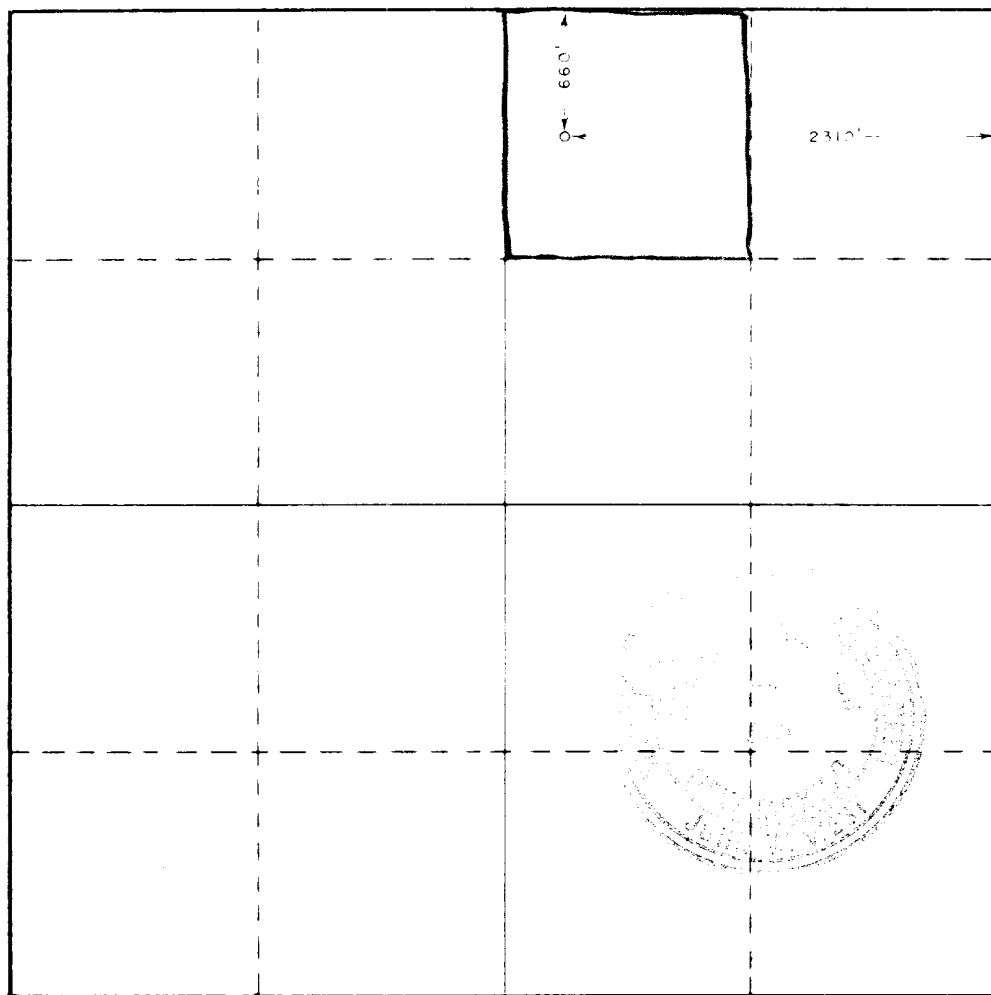
Operator FROSTMAN OIL CORP.			Lease C. T. FEDERAL		Well No. 1
Tract Letter B	Section 23	Township 15S	Range 28E	County EDDY	
Actual Footage Location of Well: 660 feet from the NORTH line and 2310 feet from the EAST line					
Ground Level Elev. 3712.7	Producing Formation San Andres		Pool Wind Round Tank, etc.	Dedicated Acreage: 40 Acres	

1. Outline the acreage dedicated to the subject well by colored pencil or hatchure marks on the plat below.
2. If more than one lease is dedicated to the well, outline each and identify the ownership thereof (both as to working interest and royalty).
3. If more than one lease of different ownership is dedicated to the well, have the interests of all owners been consolidated by communitization, unitization, force-pooling, etc?

☐ Yes ☐ No If answer is "yes," type of consolidation _____

If answer is "no," list the owners and tract descriptions which have actually been consolidated. (Use reverse side of this form if necessary.) _____

No allowable will be assigned to the well until all interests have been consolidated (by communitization, unitization, forced-pooling, or otherwise) or until a non-standard unit, eliminating such interests, has been approved by the Commission.



CERTIFICATION

I hereby certify that the information contained herein is true and complete to the best of my knowledge and belief.

Name *Clayton Fausch*
 Position *President*
 Company *Frostman Oil Corp*
 Date *5-16-85*

I hereby certify that the well location shown on this plat was plotted from field notes of actual surveys made by me or under my supervision, and that the same is true and correct to the best of my knowledge and belief.

Date Surveyed *5/11/85*
 Registered Professional Engineer and/or Land Surveyor
John W. West
 Certificate No. **JOHN W. WEST, 676**
RONALD J. EIDSON, 3239

WEK DRILLING CO., INC. - Rig 1 & 3.
BLOWOUT PREVENTER SPECIFICATION

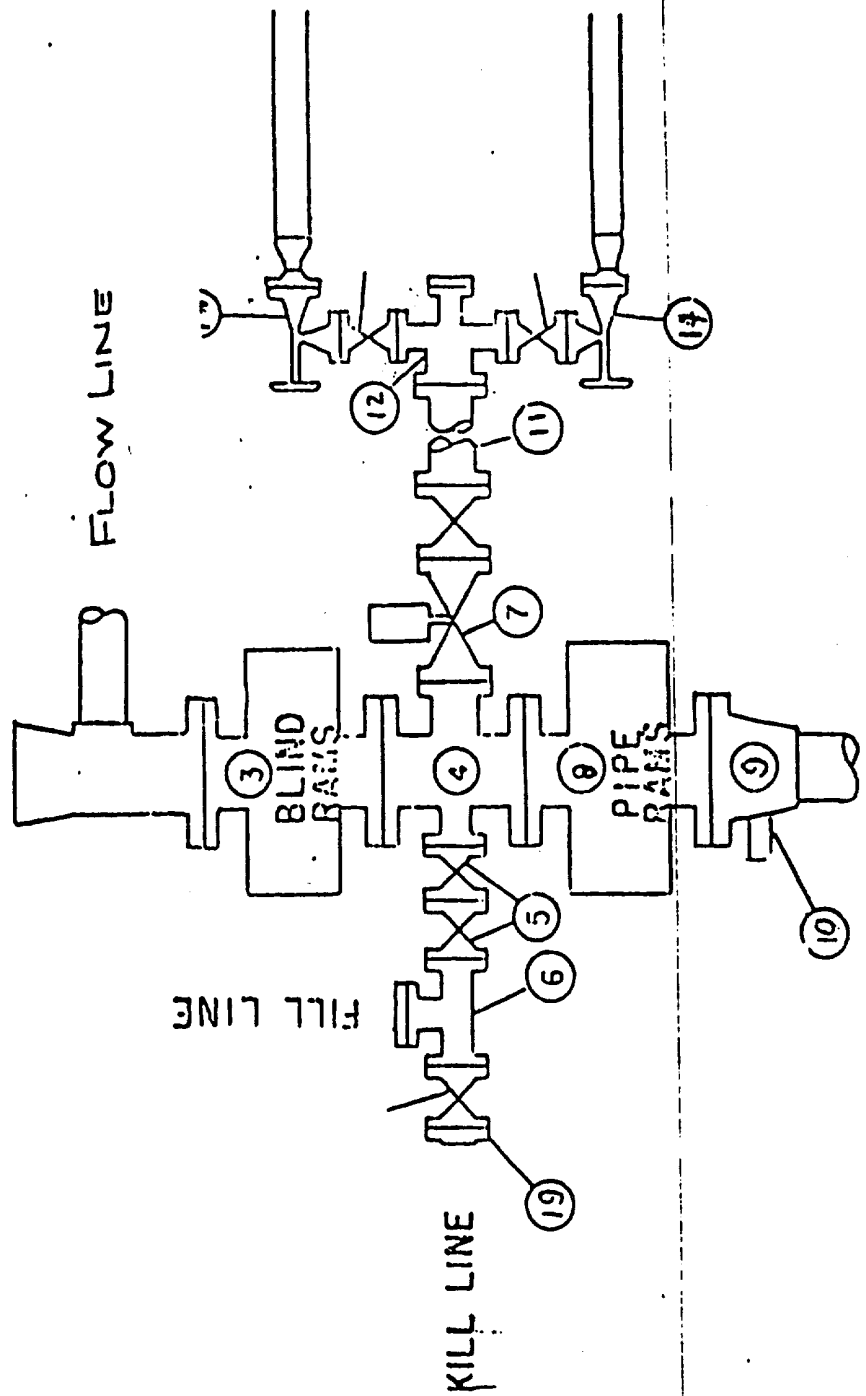


Exhibit "D"
 Surface Use Pbn

FROSTMAN OIL CORPORATION
P. O. BOX 161
Artesia, New Mexico 88210
(505) 746-3344

APPLICATION FOR DRILLING
Frostman Oil Corporation
CT Federal #1
660' FNL, 2310' FEL
Sec. 23, T-15S, R-28E
Chaves County, New Mexico
Lease: NM 25635

In conjunction with Form 3160-3, Application for Permit to Drill subject well, Frostman Oil Corporation submits the following items of pertinent information in accordance with USGS requirements:

1. The geologic surface information is Mescalero Sands of recent age.
2. The estimated tops of geologic markers are as follows:

Rustler	150'
Salado	200'
Tansill	545'
Yates	743'
Queen	1450'
San Andres	2185'

3. The estimated depths at which anticipated water, oil; or gas formations are expected to be encountered:

Water: No water is anticipated based on cable tool holes in the area.

Gas: Queen - 1500'

Oil: San Andres - 2700'

4. Proposed Casing Program: See Form 3160-3
5. Pressure Control Equipment: See Form 3160-3
6. Mud Program: See Form 3160-3
7. Auxiliary Equipment: Blowout Preventor - Exhibit "D"
8. Testing and Logging Program:
Logging: Gamma Neutron Log.
9. No abnormal pressures are anticipated. Maximum anticipated bottom hole pressure should be 700# in the Queen.
10. Anticipated starting date: June 29, 1985
Anticipated completion date: Approx. 20 days after starting date.

GRADED OR PREVIOUSLY GRADED ROADS
PROPOSED ROAD TO DRILLSITE

Exhibit "E"

FROSTMAN OIL CORP.
C.T. FEDERAL #1
660 FNL 2310 FEL
S.23 T15S R28E

DEPCO
PAPALOTES FED.

MA LEO
OLIVER FED.

DRILLSITE

Windmill

Sink Hole
Tank

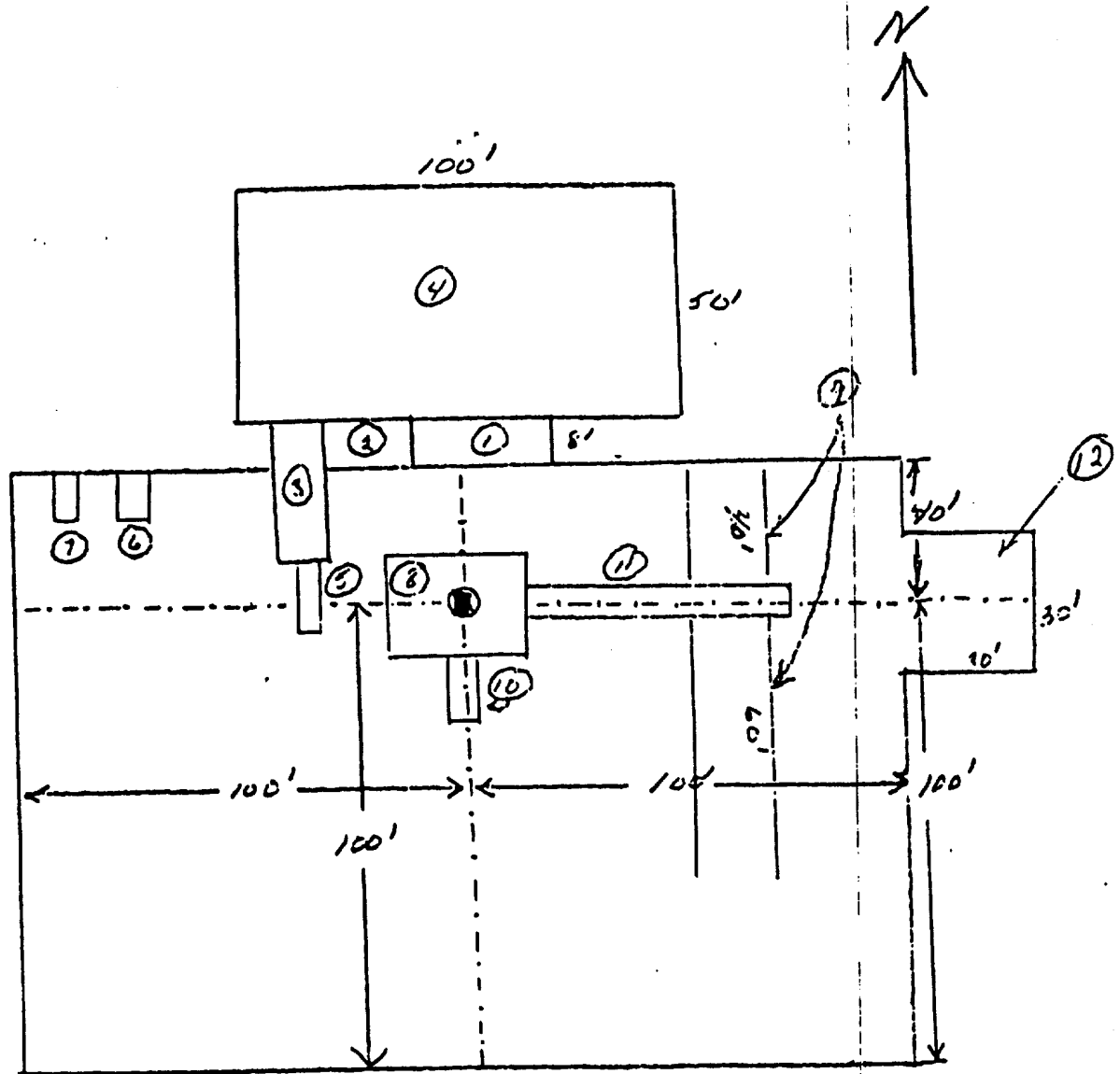
Round
Tank

ELKO OIL CO.,
CHRISTINE FED.

VABM
Cockburn
3799

Exhibit "E"

WEK DRILLING CO., INC.
RIG #1 LOCATION & MUD PIT SPECS.



- ① Shale Pit 30' x 8'
- ② Mud Pit 20' x 8'
- ③ Suction Pit 30' x 8'
- ④ Reserve Pit 100' x 50'
- ⑤ Pump

- ⑥ Water Tank
- ⑦ Fuel Tank
- ⑧ Rig
- ⑨ Pipe Racks
- ⑩ Dog House
- ⑪ Cat Walk 60'
- ⑫ Skinger

Surface Use

Exhibit 2
"A"

Schaeffer Type E 10" Series 900 Hydraulic DOP. The waste and debris from this well will be disposed of in a reserve pit and covered up.