

NEW MEXICO OIL CONSERVATION COMMISSION
Santa Fe, New Mexico

RECEIVED
Form O-101
Revised (12/1/55)
FEB 3 1960

NOTICE OF INTENTION TO DRILL

Notice must be given to the District Office of the Oil Conservation Commission and approval obtained before drilling or recompletion begins. If changes in the proposed plan are considered advisable, a copy of this notice showing such changes will be returned to the sender. Submit this notice in QUINTUPLICATE. One copy will be returned following approval. See additional instructions in Rules and Regulations of the Commission. If State Land submit 6 Copies Attach Form C-128 in triplicate to first 3 copies of form C-101

Artesia, New Mexico

(Place)

2-3-60

(Date)

OIL CONSERVATION COMMISSION
SANTA FE, NEW MEXICO

Gentlemen:

You are hereby notified that it is our intention to commence the Drilling of a well to be known as

Hondo Oil & Gas Company

(Company or Operator)

State EB

(Lease)

1

in

M

The well is

located 330 feet from the South line and 990 feet from the

West

line of Section 36

T. 17 S

R. 27 E

NMPM.

(GIVE LOCATION FROM SECTION LINE)

Empire Abo

Pool,

Eddy

County

If State Land the Oil and Gas Lease is No. E- 3793

If patented land the owner is

Address

We propose to drill well with drilling equipment as follows:

Rotary Tools

The status of plugging bond is

Blanket

Drilling Contractor

Yates Drilling Company

We intend to complete this well in the Abo

formation at an approximate depth of 6400 feet.

CASING PROGRAM

We propose to use the following strings of Casing and to cement them as indicated:

Size of Hole	Size of Casing	Weight per Foot	New or Second Hand	Depth	Sacks Cement
11	8-5/8	24	New	1000	350 (circ.)
7-7/8	5-1/2	14	New	6400	400

If changes in the above plans become advisable we will notify you immediately.

ADDITIONAL INFORMATION (If recompletion give full details of proposed plan of work.)

APPROVAL IS SUBJECT TO STATE
ENGINEERS REGULATIONS REQUIRED
ON "APPLICATION FOR PERMIT TO
DRILL FOR OIL" IN WATER BASIN.
BOX 810, ROSWELL, NEW MEXICO
Sincerely yours,

Hondo Oil & Gas Company

(Company or Operator)

By

Position Dist. Prod. Supt.

Send Communications regarding well to

Name A. J. Deans

Address Box 125 Artesia, New Mexico

OIL CONSERVATION COMMISSION

By

FEB 3 1960

Approved
Except as follows:

NEW MEXICO OIL CONSERVATION COMMISSION
WELL LOCATION AND ACREAGE DEDICATION PLAT

FEB 3 1960 C-128
Revised 5/1/57

SEE INSTRUCTIONS FOR COMPLETING THIS FORM ON THE REVERSE SIDE

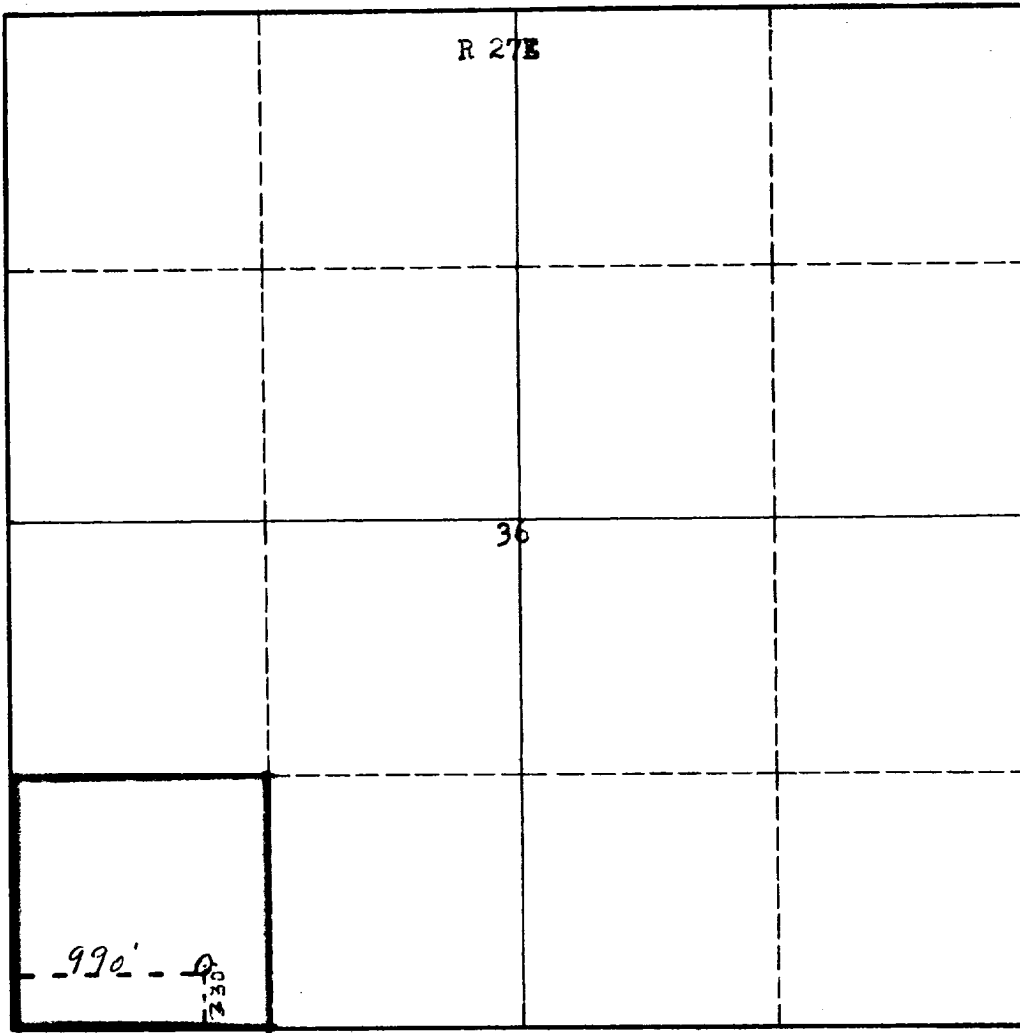
SECTION A

Operator Hondo Oil & Gas Company			Lease State EB		Well No. 1
Unit Letter M	Section 36	Township 17 S	Range 27 E	County Eddy	
Actual Footage Location of Well: 330 feet from the South line and 990 feet from the West line					
Ground Level Elev. 3641	Producing Formation Albo		Pool Empire Albo sand		Dedicated Acreage: 40 Acres

1. Is the Operator the only owner in the dedicated acreage outlined on the plat below? YES _____ NO _____. ("Owner" means the person who has the right to drill into and to produce from any pool and to appropriate the production either for himself or for himself and another. (65-3-29 (e) NMSA 1935 Comp.)
2. If the answer to question one is "no," have the interests of all the owners been consolidated by communitization agreement or otherwise? YES _____ NO _____. If answer is "yes," Type of Consolidation _____
3. If the answer to question two is "no," list all the owners and their respective interests below:

Owner	Land Description

SECTION B



CERTIFICATION

I hereby certify that the information in SECTION A above is true and complete to the best of my knowledge and belief.

Name A. Neave
Position Asst. Prod. Supt.
Company Hondo Oil & Gas Co.
Date 2-3-60

I hereby certify that the well location shown on the plat in SECTION B was plotted from field notes of actual surveys made by me or under my supervision, and that the same is true and correct to the best of my knowledge and belief.

Date Surveyed December 23, 1959
Registered Professional Engineer and/or Land Surveyor James H. Brown
Certificate No. N.M.L.S. No. 512

T
17
S

INSTRUCTIONS FOR COMPLETION OF FORM C-128

1. Operator shall furnish and certify to the information called for in Section A.
2. Operator shall outline the dedicated acreage for *both* oil and gas wells on the plat in Section B.
3. A registered professional engineer or land surveyor registered in the State of New Mexico or approved by the Commission shall show on the plat the location of the well and certify this information in the space provided.
4. All distances shown on the plat must be from the outer boundaries of the Section.
5. If additional space is needed for listing owners and their respective interests as required in question 3 of Section A, please use space below.

OIL CONSERVATION COMMISSION		
ARTESIA DISTRICT OFFICE		
No. Copies Received	6	
DISTRIBUTION		
	NO. FURNISHED	
OPERATOR	/	
SANTA FE	/	
PRORATION OFFICE		
STATE LAND OFFICE	/	
U. S. G. S.		
TRANSPORTER		
FILE	/ -	
BUREAU OF MINES		