

**NEW MEXICO OIL CONSERVATION COMMISSION
WELL LOCATION AND ACREAGE DEDICATION PLAT**

FORM C-128
5/1/57

RECEIVED

SEE INSTRUCTIONS FOR COMPLETING THIS FORM ON THE REVERSE SIDE JUL 28 1960

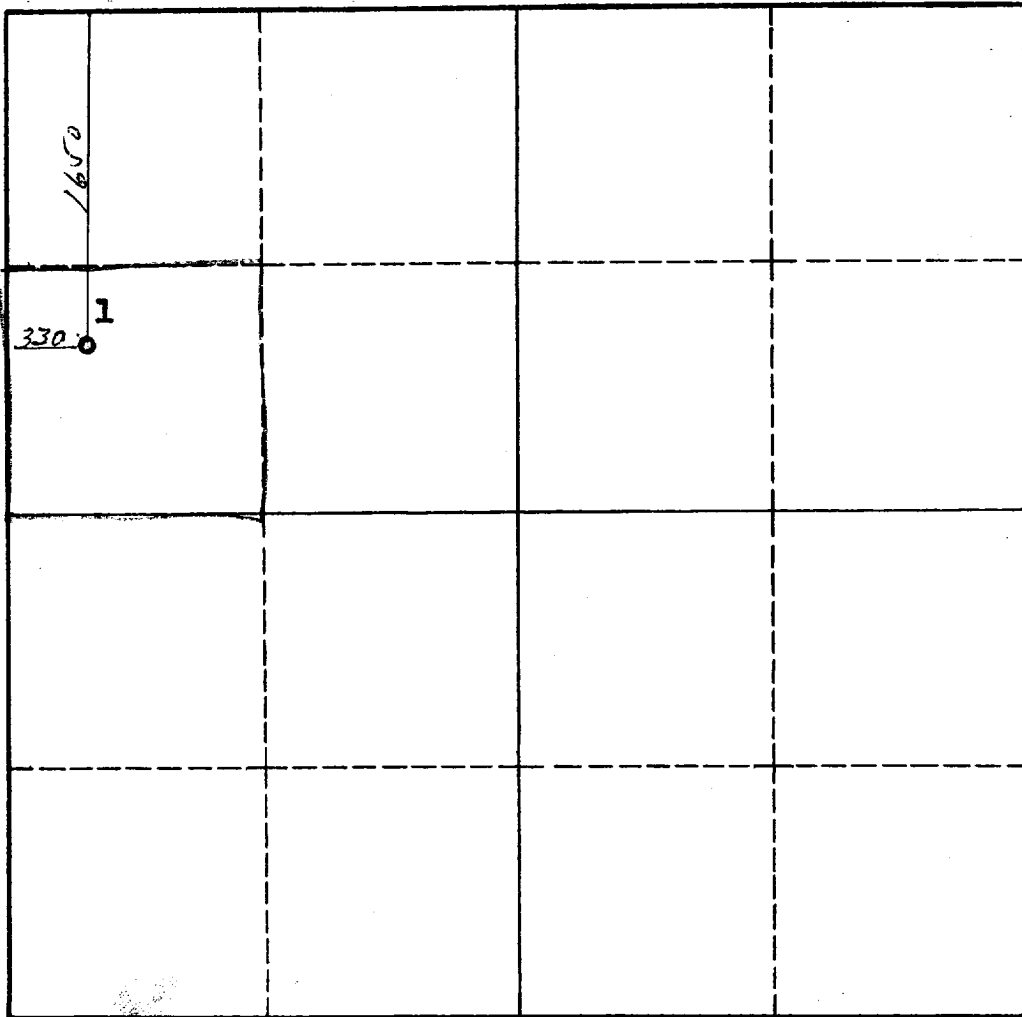
SECTION A

Operator McCoy & Stevens		Lease Atlantic-State		Well No. ARTESIA OFFICE 1	
Unit Letter E	Section 1	Township 17 South	Range 28 East	County Eddy	
Actual Footage Location of Well: 1650 feet from the North line and 330 feet from the West line					
Ground Level Elev. 3598	Producing Formation Penrose	Pool East Red Lake Queen	Dedicated Acreage: 40 Acres		

1. Is the Operator the only owner in the dedicated acreage outlined on the plat below? YES NO ____ . ("Owner" means the person who has the right to drill into and to produce from any pool and to appropriate the production either for himself or for himself and another. (65-3-29 (e) NMSA 1935 Comp.)
2. If the answer to question one is "no," have the interests of all the owners been consolidated by communitization agreement or otherwise? YES ____ NO ____ . If answer is "yes," Type of Consolidation _____
3. If the answer to question two is "no," list all the owners and their respective interests below:

Owner	Land Description

SECTION B



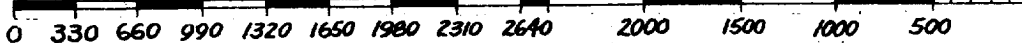
CERTIFICATION

I hereby certify that the information in SECTION A above is true and complete to the best of my knowledge and belief.

W. G. McCoy
Name
W. G. McCoy
Position
Partner
Company
McCoy & Stevens
Date
July 12, 1960

I hereby certify that the well location shown on the plat in SECTION B was plotted from field notes of actual surveys made by me or under my supervision, and that the same is true and correct to the best of my knowledge and belief.

Date Surveyed
July 11, 1960
Registered Professional Engineer and/or Land Surveyor
John A. Matlock
Certificate No.
1502



INSTRUCTIONS FOR COMPLETION OF FORM C-128

1. Operator shall furnish and certify to the information called for in Section A.
2. Operator shall outline the dedicated acreage for *both* oil and gas wells on the plat in Section B.
3. A registered professional engineer or land surveyor registered in the State of New Mexico or approved by the Commission shall show on the plat the location of the well and certify this information in the space provided.
4. All distances shown on the plat must be from the outer boundaries of the Section.
5. If additional space is needed for listing owners and their respective interests as required in question 3 of Section A, please use space below.

OIL CONSERVATION COMMISSION	
ARTESIA DISTRICT OFFICE	
No. Copies Received	6
DISTRIBUTION	
NO.	FORWARDED
ARTESIA DISTRICT OFFICE	1
STATE LAND OFFICE	1
U. S. G. S.	2
TRANSPORTER	
FILE	
BUREAU OF MINES	1