

NEW MEXICO OIL CONSERVATION COMMISSION
WELL LOCATION AND ACREAGE DEDICATION PLAT

Correct footage
Form C-102
Supersedes C-128
Effective 1-1-65

All distances must be from the outer boundaries of the Section

Operator MARBOb ENERGY CORPORATION			Lease COLLIER STATE		Well No. #8
Tract Letter L	Section 22	Township 17 SOUTH	Range 28 EAST	County EDDY	
Actual Footage Location of Well: 1618 feet from the SOUTH line and 1029 feet from the WEST line					
Ground Level Elev.	Producing Formation		Pool Red Lake On Grbg SA		Dedicated Acreage: 40 Acres

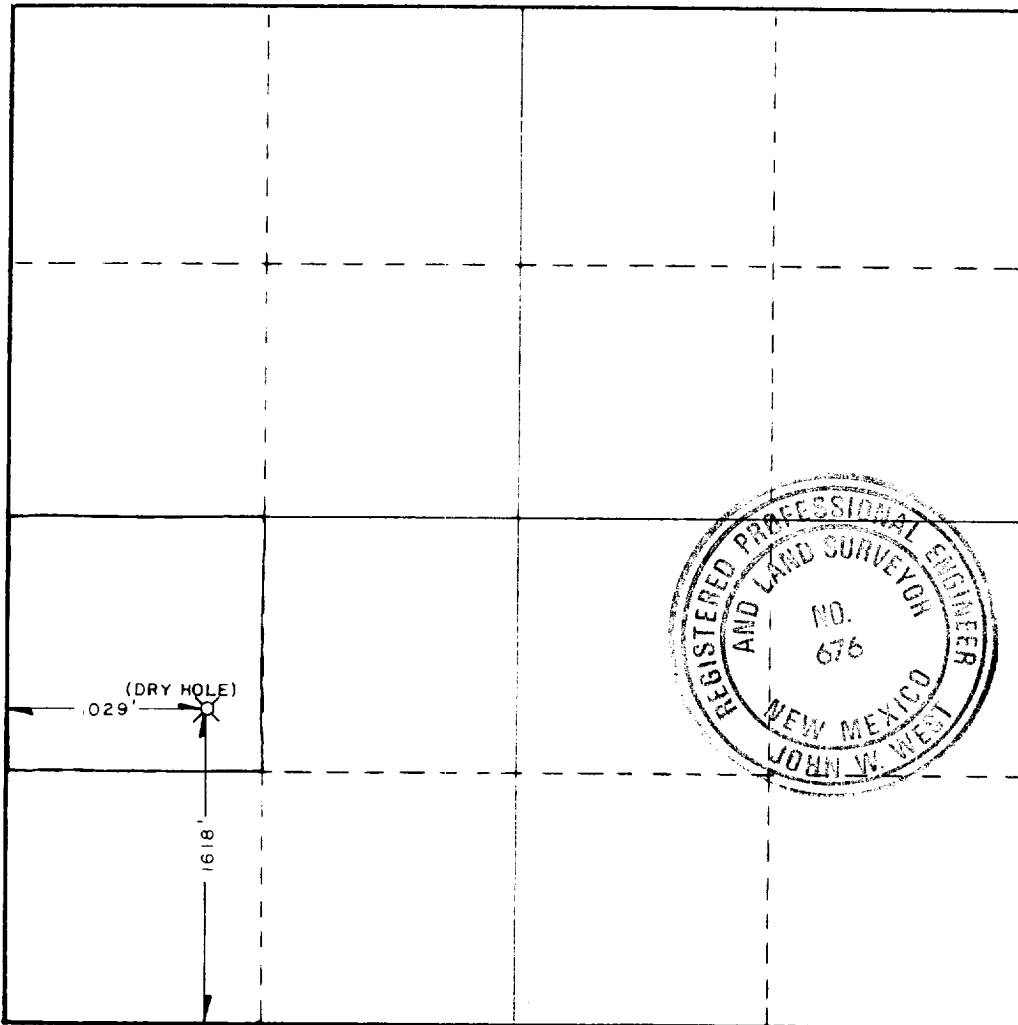
1. Outline the acreage dedicated to the subject well by colored pencil or hatchure marks on the plat below.
2. If more than one lease is dedicated to the well, outline each and identify the ownership thereof (both as to working interest and royalty).
3. If more than one lease of different ownership is dedicated to the well, have the interests of all owners been consolidated by communitization, unitization, force-pooling, etc?

RECEIVED BY
MAR 12 1986
O. C. D.
ARTESIA, OFFICE

☐ Yes ☐ No If answer is "yes," type of consolidation _____

If answer is "no," list the owners and tract descriptions which have actually been consolidated. (Use reverse side of this form if necessary.) _____

No allowable will be assigned to the well until all interests have been consolidated (by communitization, unitization, forced-pooling, or otherwise) or until a non-standard unit, eliminating such interests, has been approved by the Commission.



CERTIFICATION

I hereby certify that the information contained herein is true and complete to the best of my knowledge and belief.

DeNette Wallace
Name
DeNette Wallace
Position
Production Clerk
Company
Marbob Energy Corporation
Date
3-10-86

I hereby certify that the well location shown on this plat was plotted from field notes of actual surveys made by me or under my supervision, and that the same is true and correct to the best of my knowledge and belief.

Post 20-3
3-14-86
Correct footage

Date Surveyed
MARCH 1, 1986

Registered Professional Engineer and/or Land Surveyor
John W. West

Certificate No. **JOHN W. WEST, 676**
RONALD J. EIDSON, 3239

