

NEW MEXICO OIL CONSERVATION COMMISSION  
Santa Fe, New Mexico

RECEIVED  
JUN 19 1961  
Form O-101  
12/2/55

NOTICE OF INTENTION TO DRILL

O. C. C.  
ARTS & CRAFTS OFFICE

Notice must be given to the District Office of the Oil Conservation Commission and approval obtained before drilling or recompletion begins. If changes in the proposed plan are considered advisable, a copy of this notice showing such changes will be returned to the sender. Submit this notice in **QUINTUPPLICATE**. One copy will be returned following approval. See additional instructions in Rules and Regulations of the Commission. If State Land submit 6 Copies Attach Form O- 125 in triplicate to first 3 copies of form O-101

Midland, Texas  
(Place)

6-15-61  
(Date)

OIL CONSERVATION COMMISSION  
SANTA FE, NEW MEXICO

30-015-03822

Gentlemen:

You are hereby notified that it is our intention to commence the Drilling of a well to be known as  
Humble Oil & Refining Co.

(Company or Operator)

New Mexico State BC  
(Lease)

Well No. 5, in P Lot 16  
(Unit)

The well is

located 3300 feet from the South line and 660 feet from the East line of Section 2, T. 16-S, R. 30-E, NMPM.

(GIVE LOCATION FROM SECTION LINE) West Henshaw Undesignated Pool, Eddy County

If State Land the Oil and Gas Lease is No. E-5131

If patented land the owner is

Address

We propose to drill well with drilling equipment as follows: rotary

The status of plugging bond is on file

Drilling Contractor unknown

We intend to complete this well in the Grayburg formation at an approximate depth of 3100 feet.

CASING PROGRAM

We propose to use the following strings of Casing and to cement them as indicated:

Size of Hole	Size of Casing	Weight per Foot	New or Second Hand	Depth	Seals Cement
8-3/4	7"	17#	New	100	100*
6-1/4	2-7/8	6.4	New	3100	300**

If changes in the above plans become advisable we will notify you immediately.

ADDITIONAL INFORMATION (If recompletion give full details of proposed plan of work.)

\*Circled to surf.

\*\*Circled to at least 600' above top of uppermost pay zone.

2-core in Grayburg, HOWCO method of cementing. Minimum mud for samples.

Note: Sec. 2 is 1-1/2 miles North & South.

Approved JUN 19 1961, 19  
Except as follows:

Sincerely yours,

Humble Oil & Refining Company  
(Company or Operator)

By

Position Sr. Adm. Supervisor  
Send Communications regarding well to

Name R. R. McCarty

Address Box 1600, Midland, Texas

OIL CONSERVATION COMMISSION

By M. L. Armstrong

OIL CONSERVATION COMMISSION		
ARTESIA DISTRICT OFFICE		
No. Copies Received	DISTRIBUTION	
	NO FURNISHED	
OPERATOR		
SANTA FE		
PRORATION OFFICE		
STATE LAND OFFICE		
U. S. G. S.		
TRANSPORTER		
FILE		
BUREAU OF MINES		

HUMBLE LEASE NO. 165877

NEW MEXICO OIL CONSERVATION COMMISSION

STATE LEASE NO. E-5131

FEDERAL LEASE NO.

Well Location and Acreage Dedication Plat

RECEIVED

Form C-128

Revised 5/1/57

JUN 19 1961

## Section A.

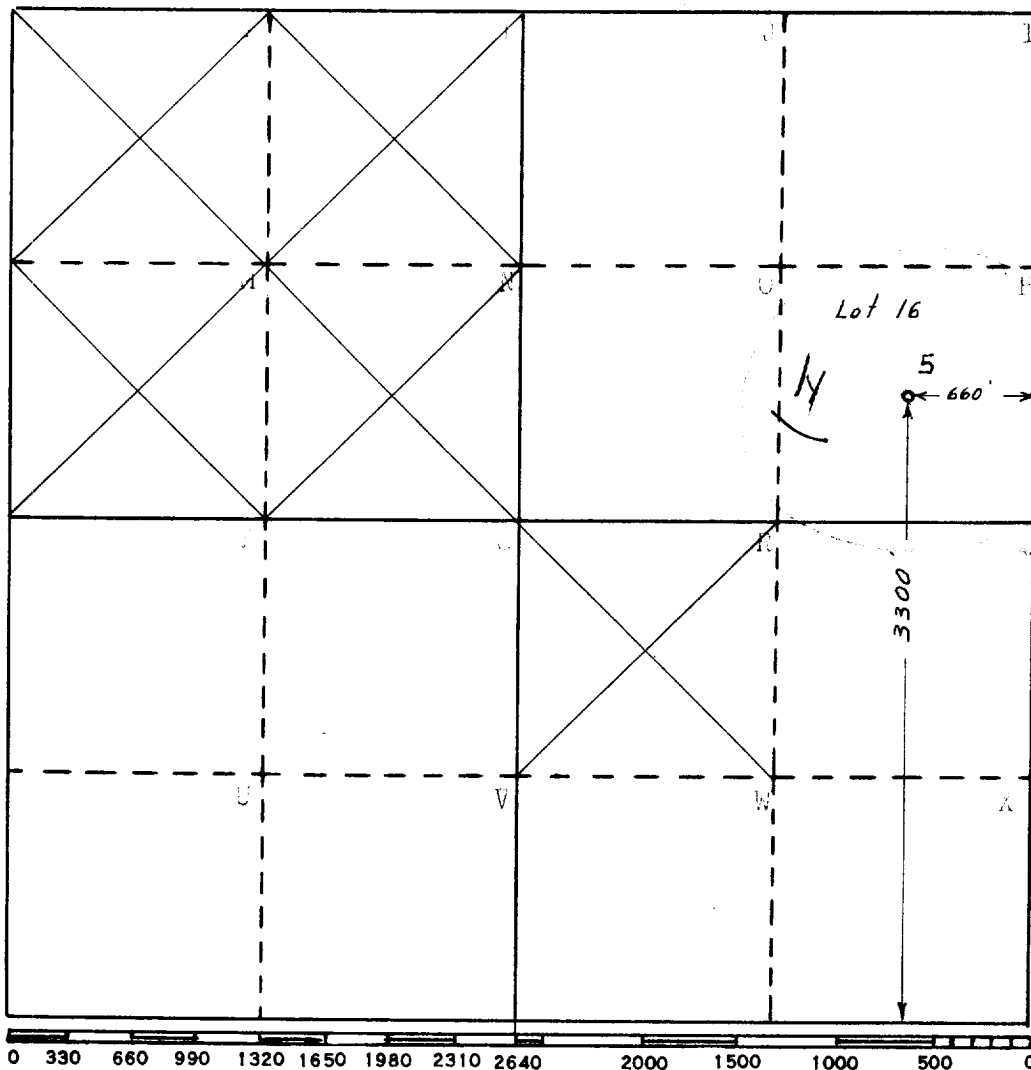
Date June 05, 1961

Operator Humble Oil & Refining Co. Lease New Mexico State "BC"  
 Well No. 5 Unit Letter "P" Section 2 Township 16 South Range 30 East NMPM  
 Located 3300 Feet From South Line, 660 Feet From East Line  
 County Eddy G. L. Elevation 4243.7 Dedicated Acreage 40 Acres  
 Name of Producing Formation Grayburg Pool West Henshaw

1. Is the Operator the only owner\* in the dedicated acreage outlined on the plat below?  
 Yes ☒ No ☐
2. If the answer to question one is "no", have the interests of all the owners been consolidated by communitization agreement or otherwise? Yes ☐ No ☐ If answer is "yes," Type of Consolidation \_\_\_\_\_
3. If the answer to question two is "no," list all the owners and thier respective interests below:

OwnerLand Description

## Section B



This is to certify that the information in Section A above is true and complete to the best of my knowledge and belief

HUMBLE OIL &amp; REFG. CO.

(Operator)

Kenneth J. Headley  
(Representative)

Box 1600 Midland, Texas  
 Address

This is to certify that the well location shown on the plat in Section B was plotted from field notes of actual surveys made by me or under my supervision and that the same is true and correct to the best of my knowledge and belief.

Date Surveyed June 14, 1961

H. N. Strickland  
 Registered Professional  
 Engineer and/or Land Surveyor

Certificate No. 2156

FILE NO. W-A- 2764

OIL CONSERVATION COMMISSION  
ARTESIA DISTRICT OFFICE

No. Copies Received

DISTRIBUTION

	NO. FURNISHED
OPERATOR	
SANTA FE	
PROBATION OFFICE	
STATE LAND OFFICE	
U. S. G. S.	
TRANSPORTER	
FILE	
BUREAU OF MINES	