

NO. OF COPIES RECEIVED

DISTRIBUTION

SANTA FE

FILE

U.S.G.S.

LAND OFFICE

OPERATOR

NEW MEXICO CONSERVATION COMMISSION

RECEIVED

APR 9 1971

O.C.C.

ARTESIA, OFFICE

30-C15-20418

Form C-101
Revised 1-1-65

5A. Indicate Type of Lease

STATE ☐ FEE ☒

5. State Oil & Gas Lease No.

7. Unit Agreement Name

8. Farm or Lease Name
Gessler "AV"

9. Well No.
5

10. Field and Pool, or Wildcat
Eagle Creek S.A.

12. County
Brewer

19. Proposed Depth
approx. 1500'

19A. Formation
San Andres

20. Rotary or C.T.
Rotary

21. Elevations (Show whether DF, RT, etc.)
3498' GL

21A. Kind & Status Plug. Bond
Blanket

21B. Drilling Contractor
Cactus Drilling Co.

22. Approx. Date Work will start
As soon as approved

23. PROPOSED CASING AND CEMENT PROGRAM

SIZE OF HOLE	SIZE OF CASING	WEIGHT PER FOOT	SETTING DEPTH	SACKS OF CEMENT	EST. TOP
9 7/8"	-	-	700'	-	
9"	7"	20#	Approx. 1150'	Circulate	
6 1/2"	4 1/2") Tapered	9.5#	" 450')	Circulate	
	5 1/2")	15.5#	" 1050')		

It is our intention to drill a 9 7/8" hole to approx. 700', reduce the hole to 9" and drill to approx. 1150', set 7" surface casing and circulate the cement. We will then reduce the hole to 6 1/2" and drill to approx. 1500'. If production is encountered, set 4 1/2" & 5 1/2", tapered string, of production casing according to the NMOC rules and regulations.

APPROVAL VALID
FOR 90 DAYS UNLESS
DRILLING COMMENCED,
EXPIRES 7-12-71

IN ABOVE SPACE DESCRIBE PROPOSED PROGRAM: IF PROPOSAL IS TO DEEPEN OR PLUG BACK, GIVE DATA ON PRESENT PRODUCTIVE ZONE AND PROPOSED NEW PRODUCTIVE ZONE. GIVE BLOWOUT PREVENTER PROGRAM, IF ANY.

I hereby certify that the information above is true and complete to the best of my knowledge and belief.

Signed W. A. Gessert Title Engineer Date 4-8-71

(This space for State Use)

APPROVED BY W. A. Gessert TITLE OIL AND GAS INSPECTOR DATE APR 12 1971

CONDITIONS OF APPROVAL, IF ANY:

Cement must be circulated to surface behind 7" casing

Notify N.M.O.C.C. in sufficient time to witness cementing the 7" casing

N MEXICO OIL CONSERVATION COMMISS.
WELL LOCATION AND ACREAGE DEDICATION PLAT

Form C-102
Supersedes C-128
Effective 1-1-65

All distances must be from the outer boundaries of the Section.

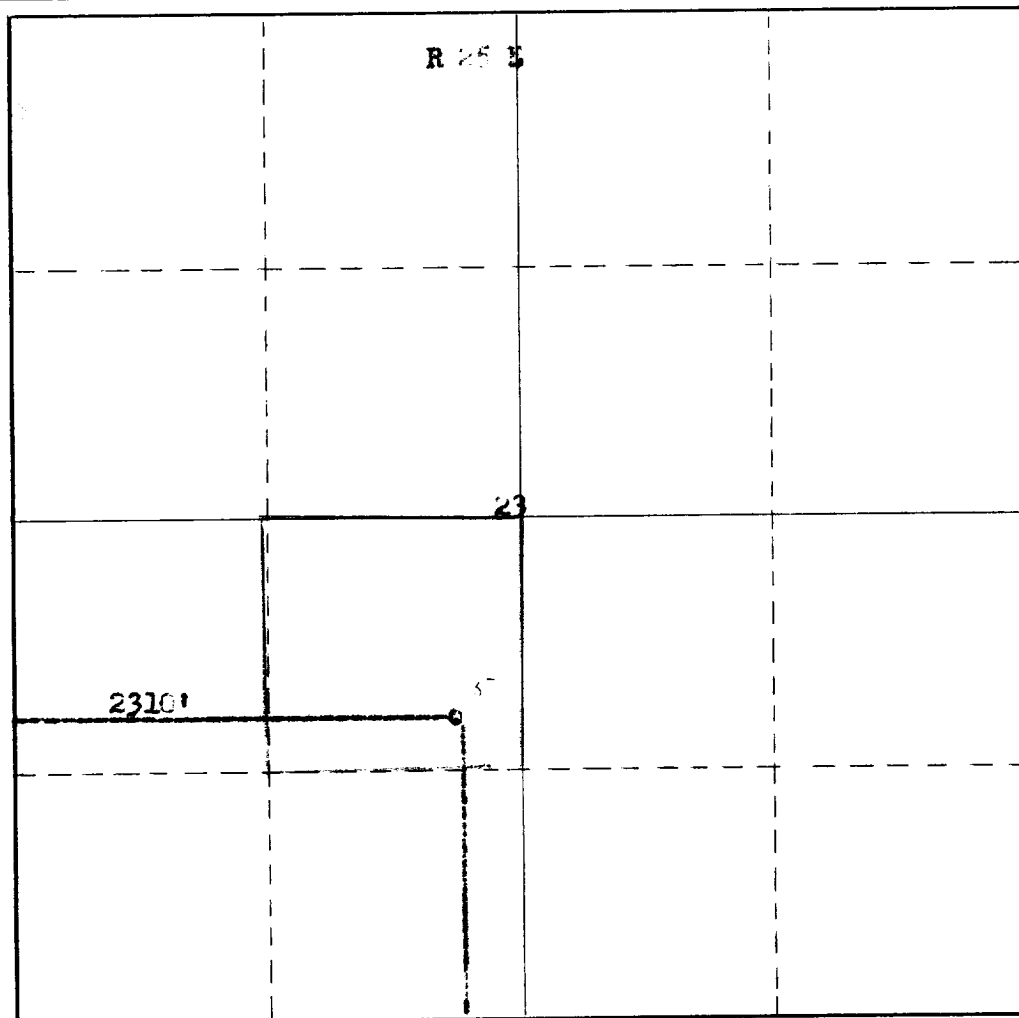
Operator Yates Petroleum Corporation			Lease XXXXXX Gissler AV		Well No. 5
Unit Letter K	Section 23	Township 17 South	Range 25 East	County Eddy	
Actual Footage Location of Well: 1650 feet from the South line and 2310 feet from the West line					
Ground Level Elev. 3498	Producing Formation San Andres		Pool Eagle Creek S.A.		Dedicated Acreage; 40 Acres

1. Outline the acreage dedicated to the subject well by colored pencil or hachure marks on the plat below.
2. If more than one lease is dedicated to the well, outline each and identify the ownership thereof (both as to working interest and royalty).
3. If more than one lease of different ownership is dedicated to the well, have the interests of all owners been consolidated by communitization, unitization, force-pooling, etc?

☐ Yes ☐ No If answer is "yes," type of consolidation _____

If answer is "no," list the owners and tract descriptions which have actually been consolidated. (Use reverse side of this form if necessary.) _____

No allowable will be assigned to the well until all interests have been consolidated (by communitization, unitization, forced-pooling, or otherwise) or until a non-standard unit, eliminating such interests, has been approved by the Commission.



CERTIFICATION

I hereby certify that the information contained herein is true and complete to the best of my knowledge and belief.

Eddie M. Mahfood

Name
Eddie M. Mahfood

Position
Engineer

Company
Yates Petroleum Corp.

Date
4-8-71

I hereby certify that the well location shown on this plat was plotted from field notes of actual surveys made by me or under my supervision and that the same is true and correct to the best of my knowledge and belief.

Date Surveyed

April 1, 1971

Registered Professional Engineer and/or Land Surveyor

James H. Brown

Certificate No.

EX 542

117