

NO. OF COPIES RECEIVED	5
DISTRIBUTION	
SANTA FE	
FILE	
U.S.G.S.	
LAND OFFICE	
OPERATOR	

RECEIVED
NEW MEXICO OIL CONSERVATION COMMISSION

AUG 9 1971

O. C. C.
ARTESIA, OFFICE

30-015-20482

Form C-101
Revised 1-1-65

5A. Indicate Type of Lease
STATE <input type="checkbox"/> FEE <input checked="" type="checkbox"/>
5. State Oil & Gas Lease No.

APPLICATION FOR PERMIT TO DRILL, DEEPEN, OR PLUG BACK

1a. Type of Work		7. Unit Agreement Name	
b. Type of Well OIL WELL <input checked="" type="checkbox"/> GAS WELL <input type="checkbox"/> OTHER <input type="checkbox"/> DRILL <input checked="" type="checkbox"/> DEEPEN <input type="checkbox"/> PLUG BACK <input type="checkbox"/> SINGLE ZONE <input type="checkbox"/> MULTIPLE ZONE <input type="checkbox"/>		8. Farm or Lease Name Jackson Estate BY	
2. Name of Operator Yates Petroleum Corporation		9. Well No. 4	
3. Address of Operator 207 South 4th Street - Artesia, New Mexico 88210		10. Field and Pool, or Wildcat Und. Eagle Creek S.A.	
4. Location of Well UNIT LETTER E LOCATED 2310 FEET FROM THE North LINE AND 990 FEET FROM THE West LINE OF SEC. 22 TWP. 17S RGE. 25E NMPM		12. County Eddy	
21. Elevations (Show whether DF, RT, etc.) 3538' GL		19. Proposed Depth Approx. 1500'	
21A. Kind & Status Plug. Bond Blanket		19A. Formation San Andres	
21B. Drilling Contractor Cactus Drilling Co.		20. Rotary or C.T. Rotary	
22. Approx. Date Work will start Immediately			

PROPOSED CASING AND CEMENT PROGRAM

SIZE OF HOLE	SIZE OF CASING	WEIGHT PER FOOT	SETTING DEPTH	SACKS OF CEMENT	EST. TOP
13 3/4"	10 3/4"	32#	400'	Circulate	
9 7/8"	7"	20#	1150'	Circulate	
6 1/8"	4 1/2"	9.5#	450')	Circulate	
	5 1/2"	14#	1050')		

It is our intention to drill a 13 3/4" hole to approx. 400', set 10 3/4" casing, if necessary, and circulate, then reduce hole to 9 7/8" and drill to approx. 1150', set 7" surface casing and circulate, reduce hole to 6 1/8" and drill to a total depth of approx. 1500'. If production is encountered a tapered string of production casing will be set according to the NMOCC rules and regulations.

APPROVAL VALID
FOR 90 DAYS UNLESS
DRILLING COMMENCED,
EXPIRES 11-9-71

IN ABOVE SPACE DESCRIBE PROPOSED PROGRAM: IF PROPOSAL IS TO DEEPEN OR PLUG BACK, GIVE DATA ON PRESENT PRODUCTION ZONE AND PROPOSED NEW PRODUCTION ZONE. GIVE BLOWOUT PREVENTER PROGRAM, IF ANY.

I hereby certify that the information above is true and complete to the best of my knowledge and belief.

Signed Eddie M. Maly Title Engineer Date 8-9-71

(This space for State Use)

APPROVED BY W. A. Gussert TITLE OIL AND GAS INSPECTOR DATE AUG 9 1971

CONDITIONS OF APPROVAL, IF ANY:

Cement must be circulated to surface behind 10 3/4" + 7" casing
Notify N.M.O.C.C. in sufficient time to witness cementing the 7" casing

NE. MEXICO OIL CONSERVATION COMMISSIC.
WELL LOCATION AND ACREAGE DEDICATION PLAT

Form C-102
Supersedes C-128
Effective 1-1-65

All distances must be from the outer boundaries of the Section.

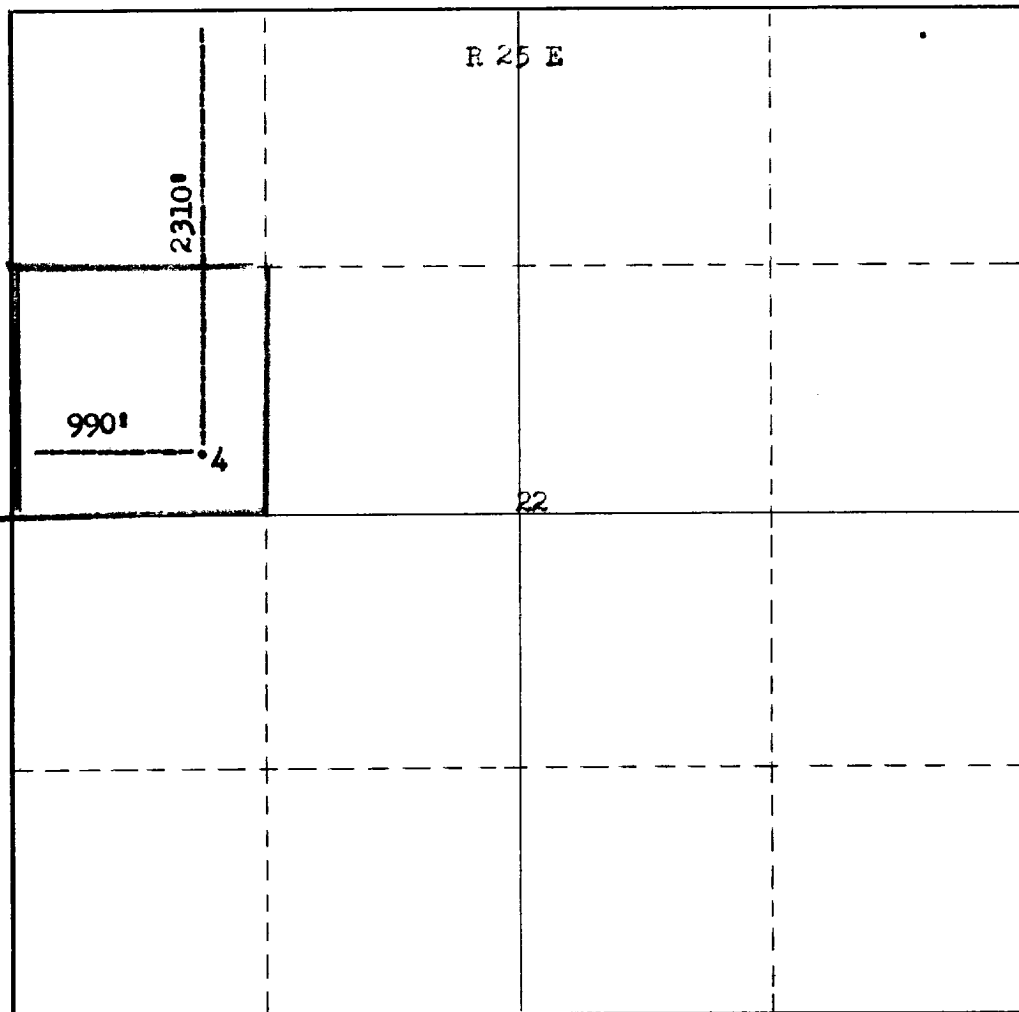
Operator Yates Petroleum Corporation		Lease Jackson Estate BY		Well No. 4
Unit Letter B	Section 22	Township 17 South	Range 25 East	County Eddy
Actual Footage Location of Well: 2310 feet from the North line and 990 feet from the West line				
Ground Level Elev. 3538	Producing Formation San Andres	Pool Und. Eagle Creek S.A.	Dedicated Acreage: 40 Acres	

1. Outline the acreage dedicated to the subject well by colored pencil or hachure marks on the plat below.
2. If more than one lease is dedicated to the well, outline each and identify the ownership thereof (both as to working interest and royalty).
3. If more than one lease of different ownership is dedicated to the well, have the interests of all owners been consolidated by communitization, unitization, force-pooling, etc?

☐ Yes ☐ No If answer is "yes," type of consolidation _____

If answer is "no," list the owners and tract descriptions which have actually been consolidated. (Use reverse side of this form if necessary.) _____

No allowable will be assigned to the well until all interests have been consolidated (by communitization, unitization, forced-pooling, or otherwise) or until a non-standard unit, eliminating such interests, has been approved by the Commission.



CERTIFICATION

I hereby certify that the information contained herein is true and complete to the best of my knowledge and belief.

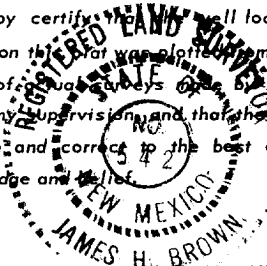
Eddie M. Mahfood
Name
Eddie M. Mahfood

Position
Engineer

Company
Yates Pet. Corporation

Date
8-9-71

I hereby certify the well location shown on this plat was plotted from field notes of a registered surveyor or under my supervision, and that the same is true and correct to the best of my knowledge and belief.



Date Surveyed
August 3, 1971

Registered Professional Engineer and/or Land Surveyor

James H. Brown
Certificate No. **542**

0 330 660 990 1320 1650 1980 2310 2640 2000 1500 1000 500 0