

UNITED STATES  
DEPARTMENT OF THE INTERIOR  
GEOLOGICAL SURVEY

## APPLICATION FOR PERMIT TO DRILL, DEEPEN, OR PLUG BACK

## 1A. TYPE OF WORK

DRILL ☒DEEPEN ☐PLUG BACK ☐

## B. TYPE OF WELL

OIL  
WELL ☒GAS  
WELL ☐

OTHER

SINGLE  
ZONE ☐MULTIPLE  
ZONE ☐

## 2. NAME OF OPERATOR

Yates Petroleum Corporation

## 3. ADDRESS OF OPERATOR

207 South 4th Street-Artesia, New Mexico 88210

## 4. LOCATION OF WELL (Report location clearly and in accordance with any State requirements.)\*

At surface

990' FNL &amp; 330' FEL Sec. 28-17S-25E

At proposed prod. zone

## 14. DISTANCE IN MILES AND DIRECTION FROM NEAREST TOWN OR POST OFFICE\*

Approx. 5 miles west of Artesia, New Mexico

## 10. DISTANCE FROM PROPOSED\* 330'

LOCATION TO NEAREST  
PROPERTY OR LEASE LINE, FT.  
(Also to nearest drig. unit line, if any)

## 16. NO. OF ACRES IN LEASE

17. NO. OF ACRES ASSIGNED  
TO THIS WELL

40

18. DISTANCE FROM PROPOSED LOCATION\*  
TO NEAREST WELL, DRILLING, COMPLETED,  
OR APPLIED FOR, ON THIS LEASE, FT.

## 19. PROPOSED DEPTH

Approx. 1500'

## 20. ROTARY OR CABLE TOOLS

Rotary

## 21. ELEVATIONS (Show whether DF, RT, GR, etc.)

3549' GL

## 22. APPROX. DATE WORK WILL START\*

As soon as approved

## 23.

## PROPOSED CASING AND CEMENTING PROGRAM

| SIZE OF HOLE | SIZE OF CASING               | WEIGHT PER FOOT | SETTING DEPTH         | QUANTITY OF CEMENT |
|--------------|------------------------------|-----------------|-----------------------|--------------------|
| 13 3/4"      | 10 3/4"                      | 32#             | 200'                  | Circulate          |
| 9 7/8"       | 7"                           | 20#             | 1130'                 | Circulate          |
| 6 1/8"       | 4 1/2" )<br>5 1/2" ) Tapered | 9.5#<br>14#     | 450' } 1500'<br>1150' | Circulate          |

It is our intention to drill a 13 3/4" hole to approx. 200', set 10 3/4" casing, if necessary, and circulate, then reduce hole to 9 7/8" and drill to approx. 1130', set 7" surface casing and circulate, reduce hole to 6 1/8" and drill to a total depth of approx. 1500'. If production is encountered, a tapered string of production casing will be set according to the USGS rules and regulations.

RECEIVED

AUG 11 1971

O. C. C.

RECEIVED

AUG 11 1971

U. S. GEOLOGICAL SURVEY  
ARTESIA, NEW MEXICO

IN ABOVE SPACE DESCRIBE PROPOSED PROGRAM: If proposal is to deepen or plug back, give data on present productive zone and proposed new zone. If proposal is to drill or deepen directionally, give pertinent data on subsurface locations and measured and true vertical depths. Give blowout preventer program, if any.

## 24.

SIGNED

*Edwin M. Kalyan*

TITLE

Engineer

DATE

8-11-71

(This space for Federal or State office use)

PERMIT NO.

APPROVAL DATE

AUG 11 1971

APPROVED BY

*James C. Kraft*

TITLE

ENGINEER

DATE

AUG 12 1971

CONDITIONS OF APPROVAL, IF ANY:

CASH  
CASH

10 3/4" + 7"

\*See Instructions On Reverse Side

NOTIFY USGS IN SUFFICIENT TIME TO

10 3/4" + 7"

CASING

NEW MEXICO OIL CONSERVATION COMMISSION  
WELL LOCATION AND ACREAGE DEDICATION PLAT

Form C-102  
Supersedes C-128  
Effective 1-1-65

All distances must be from the outer boundaries of the Section.

|  |  |                             |                                 |                       |                                       |
|--|--|-----------------------------|---------------------------------|-----------------------|---------------------------------------|
| Operator<br><b>Yates Petroleum Corporation</b>   |  |                             | Lease<br><b>Federal BZ</b>      |                       | Well No.<br><b>3</b>                  |
| Unit Letter<br><b>A</b>  | Section<br><b>28</b>                     | Township<br><b>17 South</b> | Range<br><b>25 East</b>         | County<br><b>Eddy</b> |                                       |
| Actual Footage Location of Well:<br><b>990</b> feet from the <b>North</b> line and <b>330</b> feet from the <b>East</b> line |  |                             |                                 |                       |                                       |
| Ground Level Elev.<br><b>3549</b>  | Producing Formation<br><b>San Andres</b> |                             | Pool<br><b>Eagle Creek S.A.</b> |                       | Dedicated Acreage:<br><b>40</b> Acres |

1. Outline the acreage dedicated to the subject well by colored pencil or hachure marks on the plat below.
2. If more than one lease is dedicated to the well, outline each and identify the ownership thereof (both as to working interest and royalty).
3. If more than one lease of different ownership is dedicated to the well, have the interests of all owners been consolidated by communitization, unitization, force-pooling, etc?

**RECEIVED**

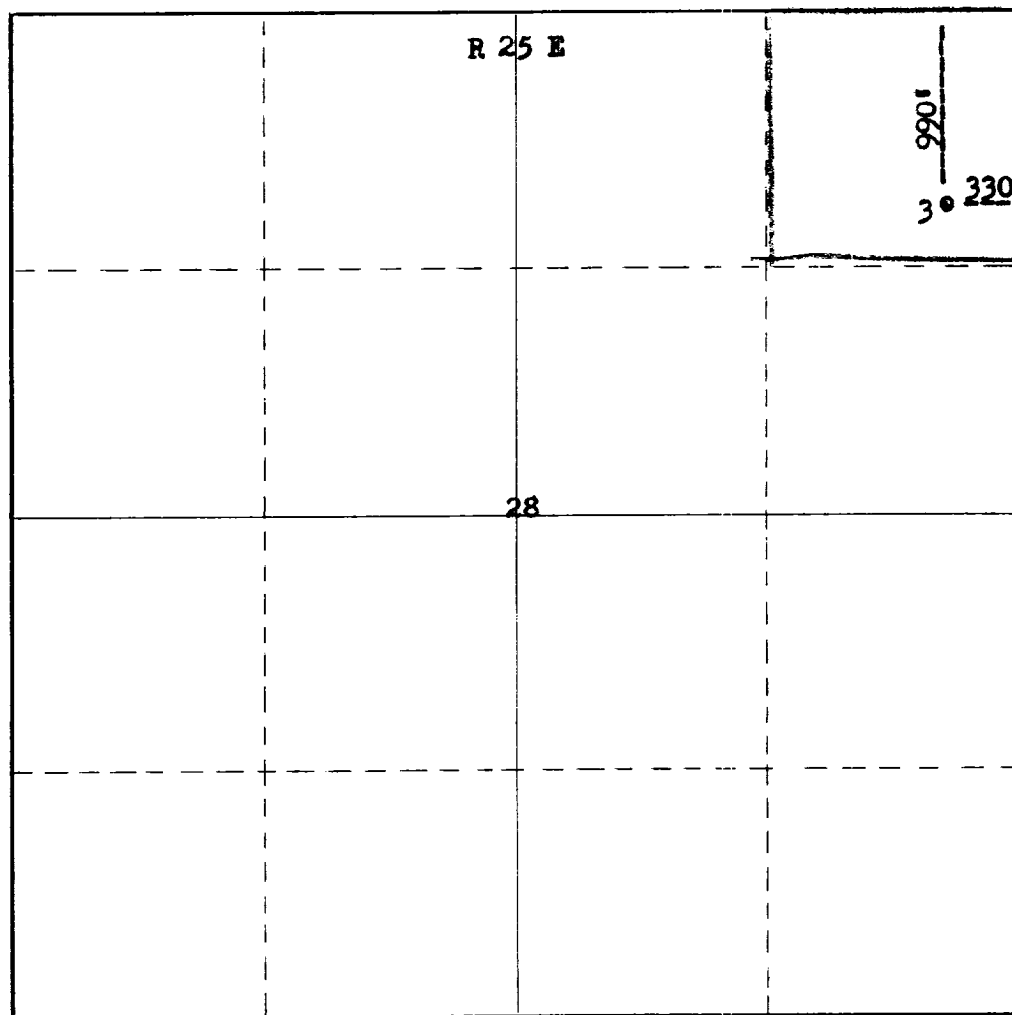
☐ Yes ☐ No If answer is "yes," type of consolidation \_\_\_\_\_

**AUG 13 1971**

If answer is "no," list the owners and tract descriptions which have actually been consolidated. (Use reverse side of this form if necessary.) \_\_\_\_\_

**O. C.**

No allowable will be assigned to the well until all interests have been consolidated (by communitization, unitization, forced-pooling, or otherwise) or until a non-standard unit, eliminating such interests, has been approved by the Commission.



**CERTIFICATION**

I hereby certify that the information contained herein is true and complete to the best of my knowledge and belief.

*Eddie M. Mahfood*

Name

**Eddie M. Mahfood**

Position

**Engineer**

Company

**Yates Pet. Corporation**

Date

**8-11-71**

I hereby certify that the well location shown on this plat was plotted from field surveys made by me or under my supervision and that the same is true and correct to the best of my knowledge.

**RECEIVED**  
**AUG 13 1971**  
**U. S. GEOLOGICAL SURVEY**  
**ARTESIA, NEW MEXICO**

Date Surveyed

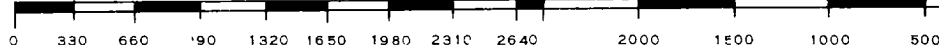
**August 10, 1971**

Registered Professional Engineer and/or Land Surveyor

*James H. Brown*

Certificate No.

**542**



**T  
17  
S**