

UNITED STATES
DEPARTMENT OF THE INTERIOR
GEOLOGICAL SURVEY

30-115-2050-3

APPLICATION FOR PERMIT TO DRILL, DEEPEN, OR PLUG BACK

1a. TYPE OF WORK

DRILL ☒

DEEPEN ☐

PLUG BACK ☐

b. TYPE OF WELL

OIL WELL ☒

GAS WELL ☐

OTHER

SINGLE ZONE ☐

MULTIPLE ZONE ☐

2. NAME OF OPERATOR

Yates Petroleum Corporation

3. ADDRESS OF OPERATOR

207 South 4th Street - Artesia, New Mexico 88210

4. LOCATION OF WELL (Report location clearly and in accordance with any State requirements.)*

At surface 2310' FNL & 330' FEL of Section 28-17S-25E

At proposed prod. zone

14. DISTANCE IN MILES AND DIRECTION FROM NEAREST TOWN OR POST OFFICE*

Approx. 6 miles west of Artesia, New Mexico

15. DISTANCE FROM PROPOSED* LOCATION TO NEAREST PROPERTY OR LEASE LINE, FT. (Also to nearest drlg. unit line, if any)

330'

16. NO. OF ACRES IN LEASE

17. NO. OF ACRES ASSIGNED TO THIS WELL

40

18. DISTANCE FROM PROPOSED* LOCATION TO NEAREST WELL, DRILLING, COMPLETED, OR APPLIED FOR, ON THIS LEASE, FT.

Approx. 1500'

20. ROTARY OR CABLE TOOLS

Rotary

21. ELEVATIONS (Show whether DF, RT, GR, etc.)

3547' GL

22. APPROX. DATE WORK WILL START*

Immediately

23. PROPOSED CASING AND CEMENTING PROGRAM

SIZE OF HOLE	SIZE OF CASING	WEIGHT PER FOOT	SETTING DEPTH	QUANTITY OF CEMENT
13 3/4"	10 3/4"	32#	200'	Circulate
9 7/8"	7"	23#	1100'	Circulate
6 1/4"	4 1/2")	9.5#	450') 1500'	Circulate
	5 1/2")	14#	1050')	

It is our intention to drill a 13 3/4" hole to approx. 200', set 10 3/4" casing, if necessary, and circulate, then reduce hole to 9 7/8", drill to approx. 1100', set 7" surface casing and circulate, reduce hole to 6 1/4" drill to a total depth of approx. 1500'. If production is encountered, a tapered string of production casing will be set according to the USGS rules and regulations.

RECEIVED

SEP 15 1971

U. S. GEOLOGICAL SURVEY
ARTESIA, NEW MEXICO

IN ABOVE SPACE DESCRIBE PROPOSED PROGRAM: If proposal is to deepen or plug back, give data on present productive zone and proposed new productive zone. If proposal is to drill or deepen directionally, give pertinent data on subsurface locations and measured and true vertical depths. Give blowout preventer program, if any.

24.

SIGNED

TITLE

President

DATE

9-15-71

(This space for Federal or State office use)

PERMIT NO.

APPROVAL DATE

DECLARED WATER BASIN

CEMENT BEHIND THE CASING MUST BE CIRCULATED

NOTIFY USGS IN SUFFICIENT TIME TO CEMENTING THE CASING.

APPROVED
SEP 15 1971

R. L. BECKMAN
ACTING DISTRICT ENGINEER

THIS APPROVAL IS RESCINDED IF OPERATIONS ARE NOT COMMENCED WITHIN 3 MONTHS.

DEC 16 1971

*See Instructions On Reverse Side

**NEW MEXICO OIL CONSERVATION COMMISSION
WELL LOCATION AND ACREAGE DEDICATION PLAT**

Form C-102
Supersedes C-128
Effective 1-1-65

All distances must be from the outer boundaries of the Section.

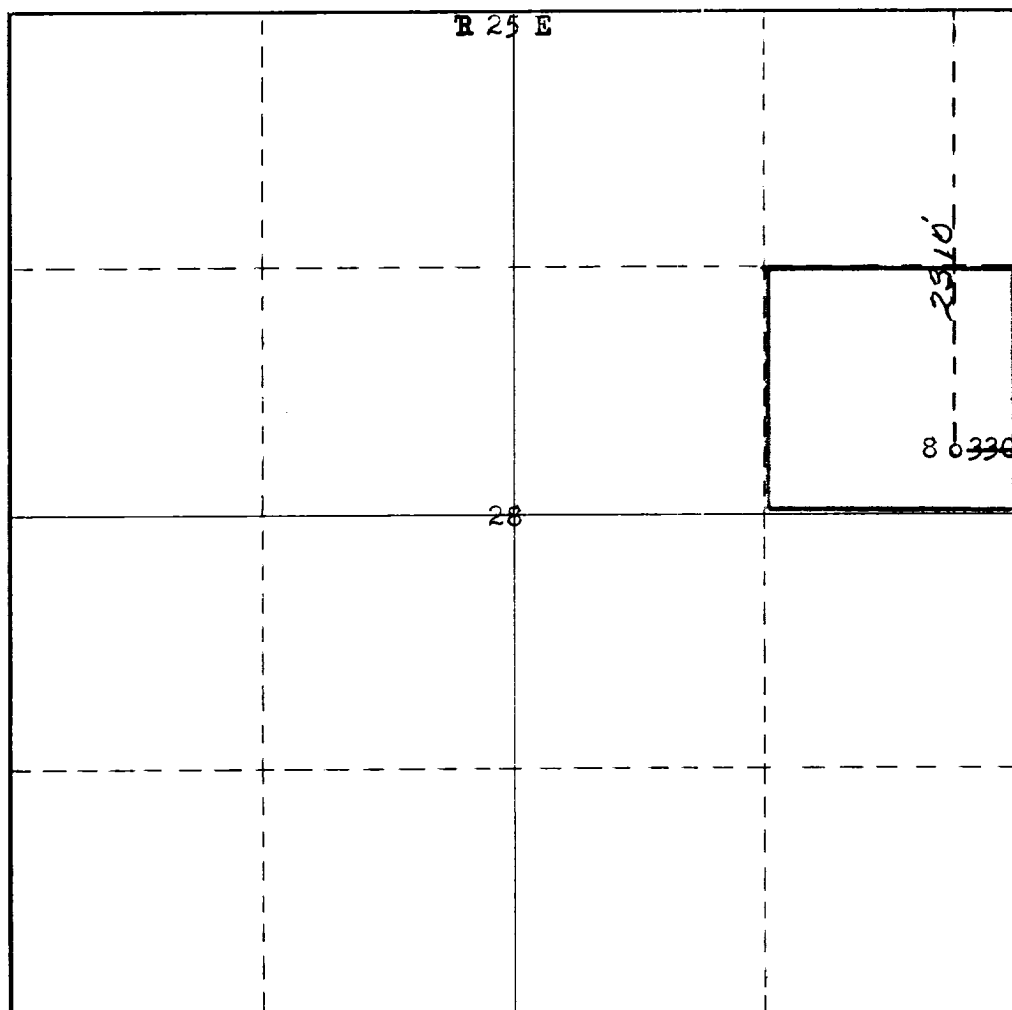
Operator YATES PETROLEUM CORPORATION			Lease FEDERAL BZ		Well No. 8
Unit Letter H	Section 28	Township 17S	Range 25E	County Eddy	
Actual Footage Location of Well: 2310 feet from the North line and 330 feet from the East line					
Ground Level Elev. 3547	Producing Formation SanAndres	Pool Und. Eagle Creek S.A.		Dedicated Acreage: 40 Acres	

1. Outline the acreage dedicated to the subject well by colored pencil or hachure marks on the plat below.
2. If more than one lease is dedicated to the well, outline each and identify the ownership thereof (both as to working interest and royalty).
3. If more than one lease of different ownership is dedicated to the well, have the interests of all owners been consolidated by communization, unitization, force-pooling, etc?

☐ Yes ☐ No If answer is "yes," type of consolidation _____

If answer is "no," list the owners and tract descriptions which have actually been consolidated. (Use reverse side of this form if necessary.) _____

No allowable will be assigned to the well until all interests have been consolidated (by communization, unitization, forced-pooling, or otherwise) or until a non-standard unit, eliminating such interests, has been approved by the Commission.



CERTIFICATION

I hereby certify that the information contained herein is true and complete to the best of my knowledge and belief.

Name
Eddie M. Mahfood

Position
Engineer

Company
Yates Pet. Corporation

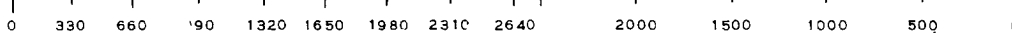
Date
9-15-71

REGISTERED LAND SURVEYOR
SEP 15 1971
 I have examined the location shown on this plat and find it conforms to the notes and survey made by me or under my supervision and that the same is correct to the best of my knowledge and belief.

Date Surveyed
September 9th, 1971

Registered Professional Engineer and/or Land Surveyor

James H. Brown
 Certificate No. **542**



T
17
S