

UNITED STATES
DEPARTMENT OF THE INTERIOR
GEOLOGICAL SURVEY

APPLICATION FOR PERMIT TO DRILL, DEEPEN, OR PLUG BACK

30-015-21625

5. LEASE DESIGNATION AND SERIAL NO.
NM 0219603

6. IF INDIAN, ALLOTTEE OR TRIBE NAME

7. UNIT AGREEMENT NAME

8. FARM OR LEASE NAME
Federal "B" CORR

9. WELL NO.
12

10. FIELD AND POOL, OR WILDCAT
~~Richard A. Fitch~~

11. SEC. T. R. M. OR B. E.
AND SURVEY OR AREA
Section 21-17S-25E
Unit K MMPM

12. COUNTY OR PARISH
Eddy

13. STATE
NM

16. NO. OF ACRES IN LEASE

17. NO. OF ACRES ASSIGNED TO THIS WELL
320

20. ROTARY OR CABLE TOOLS
Rotary

22. APPROX. DATE WORK WILL START*
As soon as approved

1a. TYPE OF WORK
DRILL ☒ DEEPEN ☐ PLUG BACK ☐

b. TYPE OF WELL
OIL WELL ☐ GAS WELL ☒ OTHER ☐

2. NAME OF OPERATOR
Yates Petroleum Corporation v

3. ADDRESS OF OPERATOR
207 South 4th Street - Artesia, NM 88210

4. LOCATION OF WELL (Report location clearly and in accordance with any State requirements.)*
At surface
1980' FSL & 1980' FWL of Section 21-17S-25E
At proposed prod. zone

14. DISTANCE IN MILES AND DIRECTION FROM NEAREST TOWN OR POST OFFICE*
5 miles west of Artesia, New Mexico

15. DISTANCE FROM PROPOSED* LOCATION TO NEAREST PROPERTY OR LEASE LINE, FT. (Also to nearest drlg. unit line, if any)
660'

18. DISTANCE FROM PROPOSED LOCATION* TO NEAREST WELL, DRILLING, COMPLETED, OR APPLIED FOR, ON THIS LEASE, FT.
466'

19. PROPOSED DEPTH
8300' (Approx.)

21. ELEVATION'S (Show whether DF, RT, GR, etc.)
3572' GR

23. PROPOSED CASING AND CEMENTING PROGRAM

SIZE OF HOLE	SIZE OF CASING	WEIGHT PER FOOT	SETTING DEPTH	QUANTITY OF CEMENT
17½"	13-3/8or12-3/4"	48or34#	approx 200'	Circulate
12¼"	8-5/8"	24#	" 1050'	Circulate
7-7/8"	4½or5½"	10.5-11.6#or 15.5-17#	" 8300'	250 sacks

Propose to drill & test the Morrow and intermediate formations. Approximately 200' of surface casing will be set to shut off gravel and caving, and intermediate casing will be set 100' below the Artesian Zone. If commercial, will run 4½" or 5½" casing.

Mud Program: - FW gel & LCM to 1100'. FW to 5100', KCL wtr to 6100', Flossal-Drispak mud to TD.

BOP Program: - BOP's to be installed on 8-5/8" casing and tested pipe rams daily, blind rams on trips.

RECEIVED

SEP 10 1975

RECEIVED
AUG 27 1975
U. S. GEOLOGICAL SURVEY
NEW MEXICO

IN ABOVE SPACE DESCRIBE PROPOSED PROGRAM: If proposal is to deepen or plug back, give data on present productive zone and proposed new productive zone. If proposal is to drill or deepen directionally, give pertinent data on subsurface locations and measured and true vertical depths. Give blowout preventer program, if any.

ARTESIA, OFFICE

24. SIGNED Eddie M. Wadsworth TITLE Engineer DATE 8-27-75

(This space for Federal or State office use)

PERMIT NO.

SUBJECT TO ATTACHED DEEP WELL CONTROL

APPROVED BY
CONDITIONS OF APPROVAL, IF ANY:REQUIREMENTS DATED JUN 22 1973

TITLE

Subject to Commitment
Agreement
to productionAPPROVED
SEP 9 - 1975
R. L. BECKWITH
ACTING DISTRICT ENGINEER

*See Instructions On Reverse Side
THIS APPROVAL IS RECORDED
ARE NOT COMMENCED WITHIN 3 MONTHS.
EXPIRES DEC 9 - 1975

DECLARED WATER BASIN
1376
83
CEMENT BEHIND THE
CASING MUST BE CIRCULATED

NOTIFY USGS IN SUFFICIENT TIME TO
WITNESS CEMENTING TIME 8:15

NE EXICO OIL CONSERVATION COMMISSIC
WELL LOCATION AND ACREAGE DEDICATION PLAT

Form C-102
Supersedes C-128
Effective 1-1-65

All distances must be from the outer boundaries of the Section.

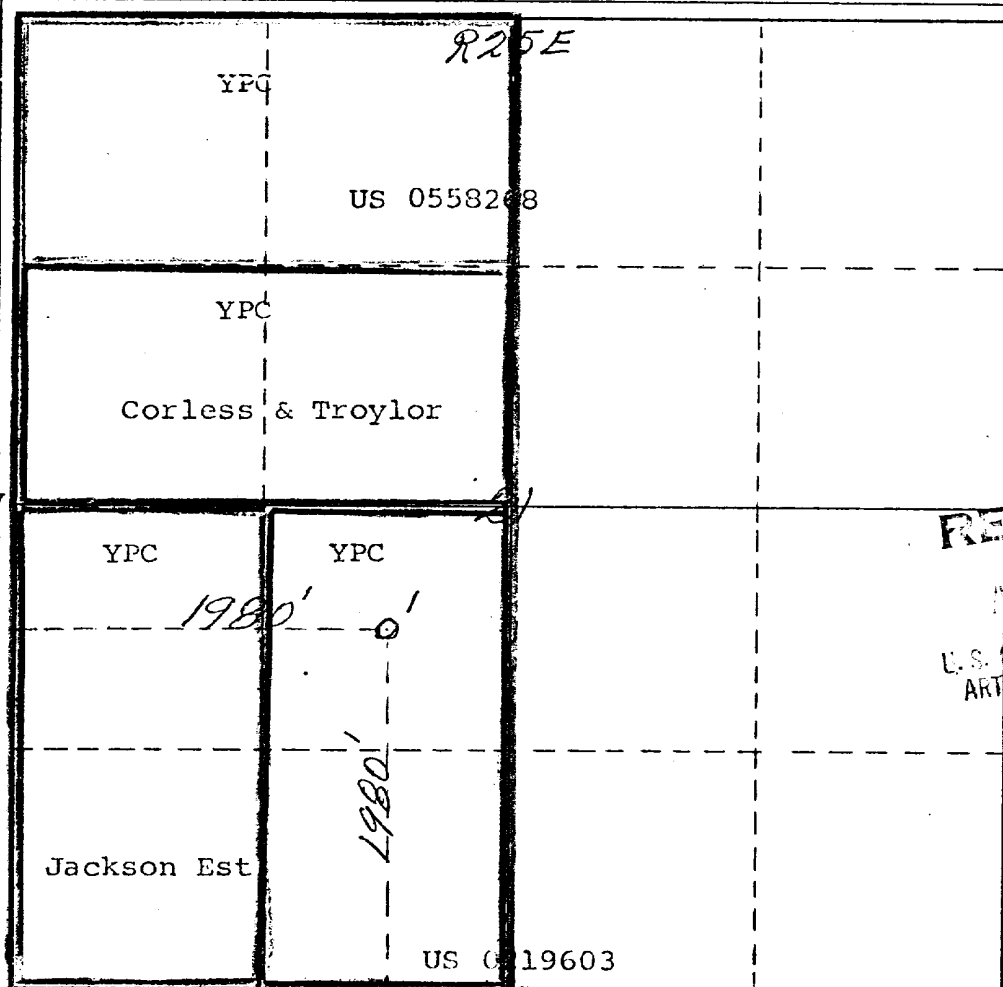
Operator <i>Yates Petroleum Corp</i>			Lease <i>Federal "BZ"</i>		Well No. <i>12</i>
Unit Letter <i>K</i>	Section <i>21</i>	Township <i>17 South</i>	Range <i>25 East</i>	County <i>Eddy</i>	
Actual Footage Location of Well: <i>1980</i> feet from the <i>South</i> line and <i>1980</i> feet from the <i>West</i> line					
Ground Level Elev. <i>3572</i>	Producing Formation <i>Atoka-Morrow</i>		Pool <i>Richardson</i>	Dedicated Acreage: <i>320</i> Acres	

1. Outline the acreage dedicated to the subject well by colored pencil or hachure marks on the plat below.
2. If more than one lease is dedicated to the well, outline each and identify the ownership thereof (both as to working interest and royalty).
3. If more than one lease of different ownership is dedicated to the well, have the interests of all owners been consolidated by communitization, unitization, force-pooling, etc?

☒ Yes ☐ No If answer is "yes," type of consolidation To be communitized

If answer is "no," list the owners and tract descriptions which have actually been consolidated. (Use reverse side of this form if necessary.)

No allowable will be assigned to the well until all interests have been consolidated (by communitization, unitization, forced-pooling, or otherwise) or until a non-standard unit, eliminating such interests, has been approved by the Commission.



CERTIFICATION

I hereby certify that the information contained herein is true and complete to the best of my knowledge and belief.

Eddie M. Mahfood
Name

Eddie M. Mahfood

Position
Engineer

Company
Yates Petroleum Corp.

Date
8-27-75

RECEIVED

I hereby certify that the location shown on this plat was plotted from field notes of surveys made by me or under my supervision and that the same is true and correct to the best of my knowledge and belief.

Date Surveyed
August 26th 1975
Registered Professional Engineer
and/or Land Surveyor

James H. Brown
Certificate No.
542

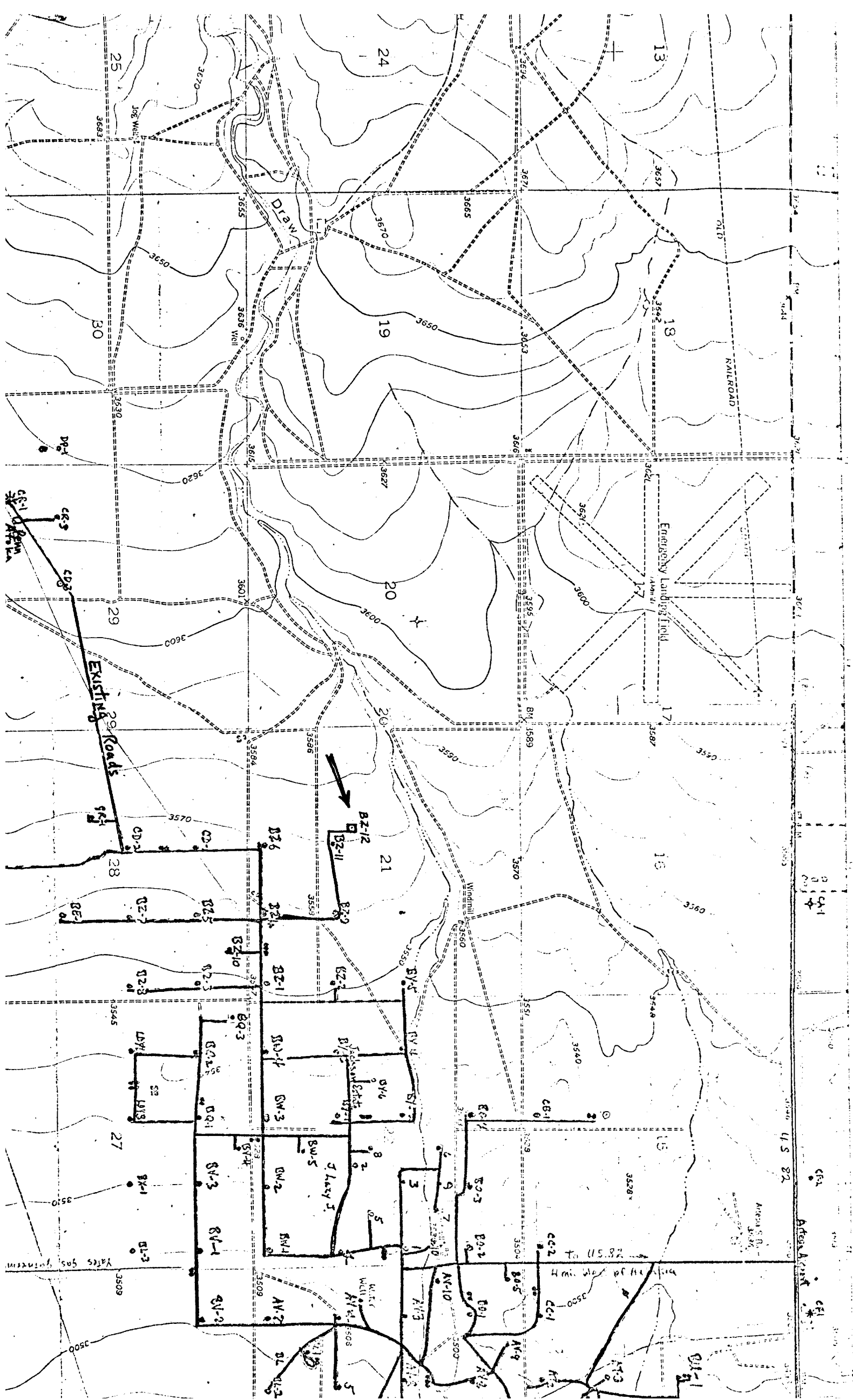
0 330 660 990 1320 1650 1980 2310 2640 2000 1500 1000 500

Yates Petroleum Corporation
Federal "BZ" Com #12- NM0219603
Section 21-17S-25E - Unit K
Eddy County, New Mexico

Development plan to accompany "Applications to Drill, Federal Lease".

12-Point Plan.

1. EXISTING ROADS: See Plat (Exhibit A) Existing caliched road in Eagle Creek (S.A.) field within 460 feet of location.
2. PLANNED ACCESS ROADS: See Plat (Exhibit A) Approx 460 feet of new road, west and north from existing road.
3. LOCATION OF WELLS: See Plat (Exhibit A) This site is 470 feet NW of a San Andres Oil Well, diagonal offset to Richard's Knob (Atoka)
4. LATERAL ROADS TO LOCATION: See Plat (Exhibit A) No lateral roads in this pasture
5. LOCATION OF TANK BATTERY & FLOWLINES: See Plat (Exhibit C) Tanks will be kept on pad with adequate turn-around.
6. LOCATION & TYPES OF WATER SUPPLY: May pipe water from existing water well in Section 1-18S-24E.
7. METHODS FOR HANDLING WASTE DISPOSAL: See Sketch (Exhibit C) Mud in mud pits, trash and engine oil in burn pits.
8. LOCATION OF CAMPS: Not Applicable.
9. LOCATION OF AIRSTRIPS: Not Applicable.
10. LOCATION LAYOUT (rig, tanks, pits, racks, etc): See Sketch (Exhibit C)
11. PLANS FOR RESTORATION OF SURFACE: Pits will be fenced until dry, then leveled. If non-commercial will clean and restore location to near original and to the satisfaction of the surface owner.
12. OTHER ENVIRONMENT INFORMATION: Gently rolling terrain w/prairie grass & tumbleweed, grazing rights. Development plan satisfactory to rancher, W. E. McIlhaney, Box 38, Rt 1, Artesia, NM - Ph 746-3034



YATES PETROLEUM- FEDERAL "BZ" No. 12 COM.
 1980 FSL 1980 FWL, Section 21-17S-25E, Eddy Co.

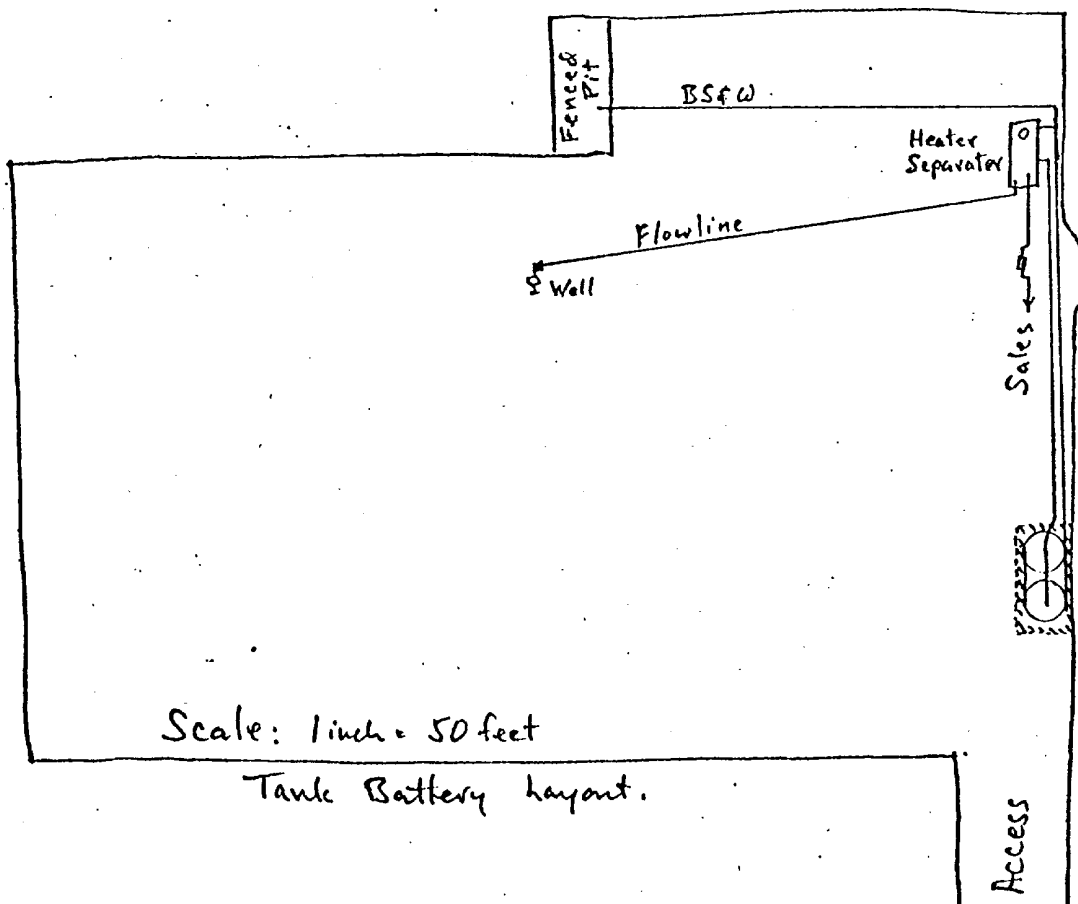
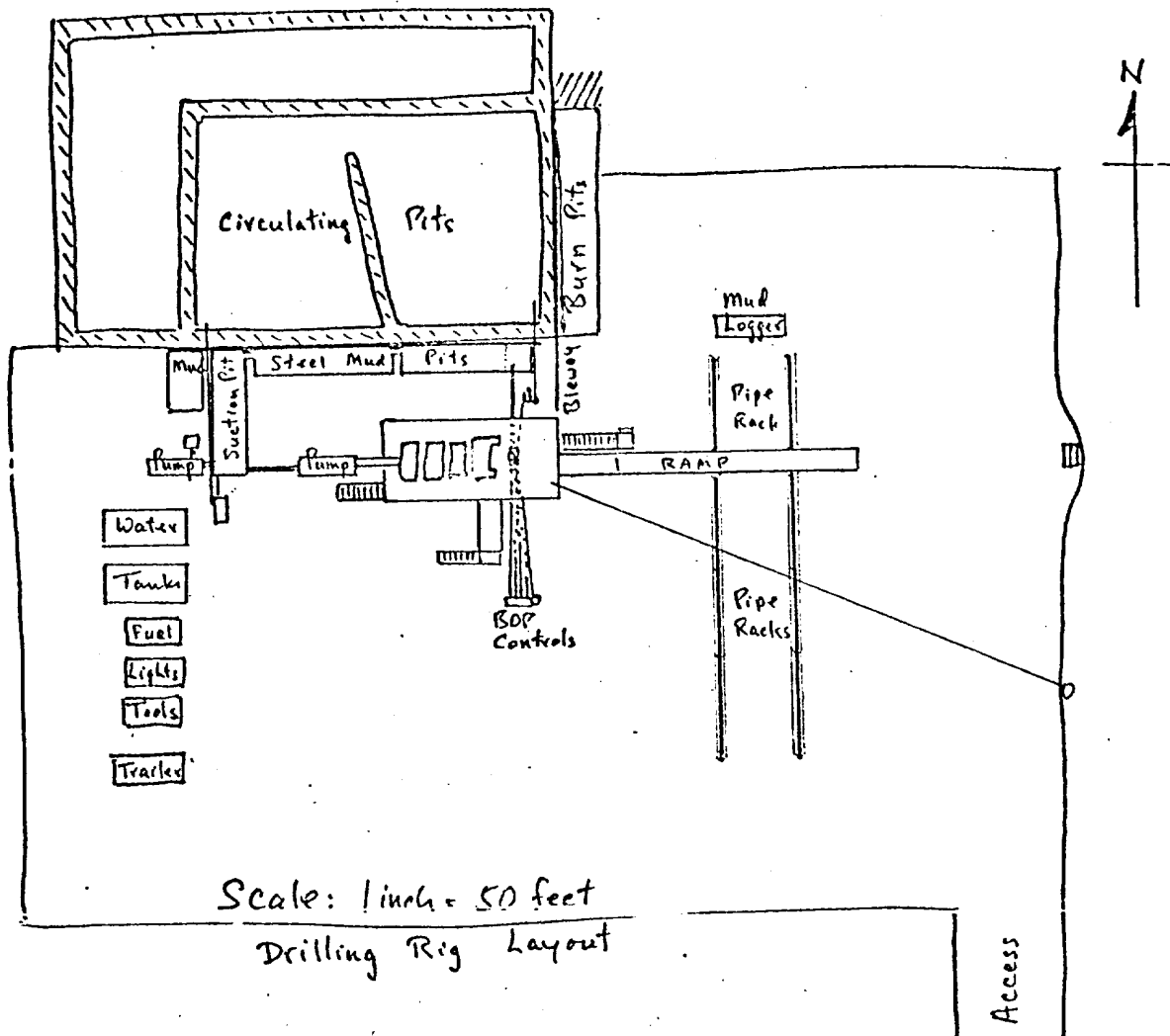


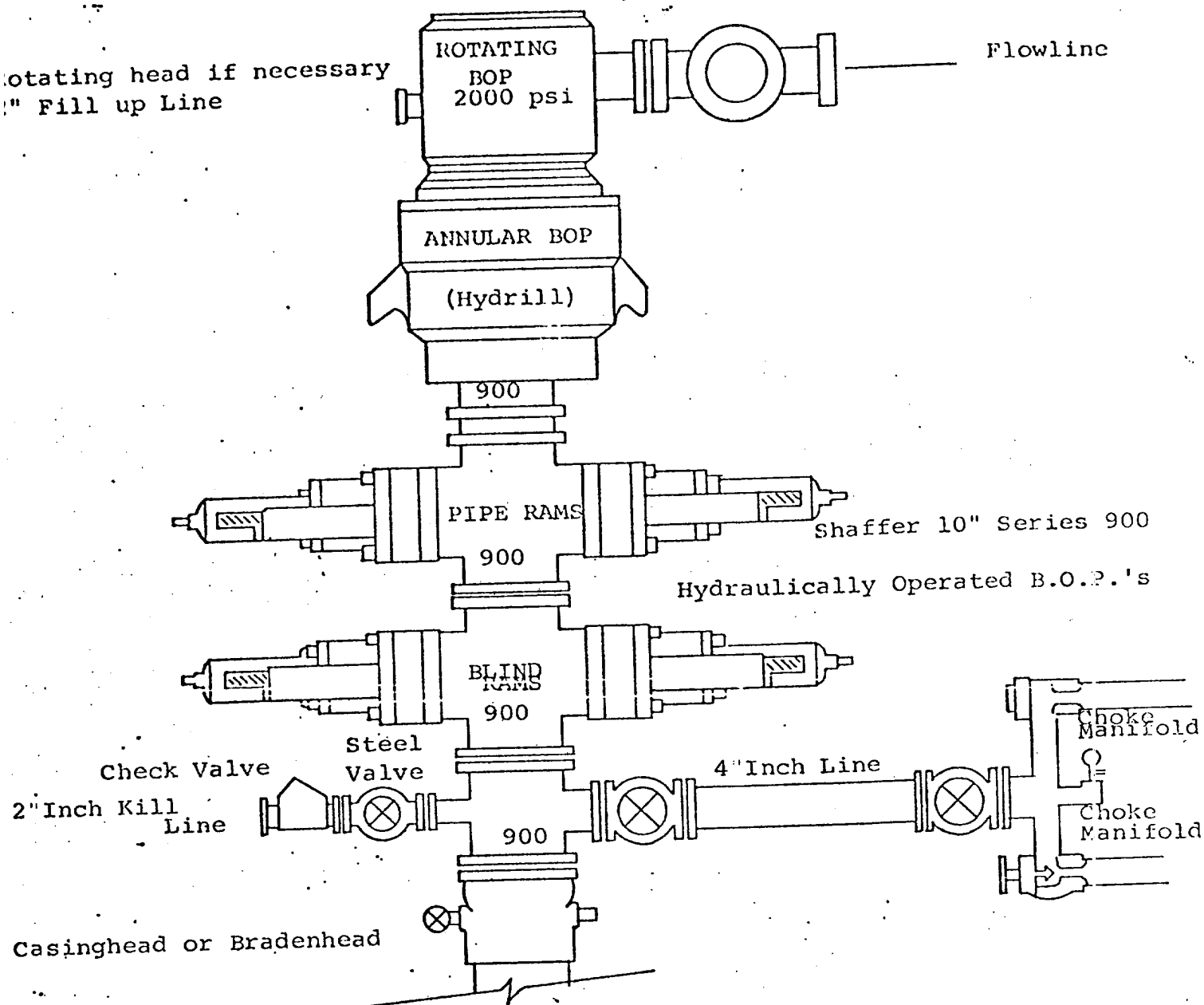
Exhibit "C"

DIAGRAMMATIC SKETCH BOP ASSEMBLY

Ard Drilling Company

Rig #4

Yates Petroleum Corporation - Federal BZ No. 1 Com
Section 21-17S-25E, Eddy County, New Mexico



THE FOLLOWING CONSTITUTE MINIMUM BLOWOUT PREVENTER REQUIREMENTS

1. All preventers to be hydraulically operated with secondary manual controls installed prior to drilling out from under casing.
2. Choke outlet to be a minimum of 4" diameter.
3. Kill line to be of all steel construction of 2" minimum diameter.
4. All connections from operating manifolds to preventers to be all steel hole or tube a minimum of one inch in diameter.
5. The available closing pressure shall be at least 15% in excess of that required with sufficient volume to operate the B.O.P.'s.
6. All connections to and from preventer to have a pressure rating equivalent to that of the B.O.P.'s.
7. Inside blowout preventer to be available on rig floor.
8. Operating controls located a safe distance from the rig floor.
9. Hole must be kept filled on trips below intermediate casing. Operator not responsible for blowouts resulting from not keeping hole full.
10. D. P. float must be installed and used below zone of first gas intrusion.