

UNITED STATES
DEPARTMENT OF THE INTERIOR
N. M. O. C. C. CO. GEOLOGICAL SURVEY

SUBMIT IN TRIPLICATE*
(Other instructions on reverse side)

Copy to 87
Form approved
Budget Bureau No. 42-R1424

SUNDRY NOTICES AND REPORTS ON WELLS

(Do not use this form for proposals to drill or to deepen or plug back to a different reservoir. Use "APPLICATION FOR PERMIT" for such proposals.)

RECEIVED

OCT 12 1978

1. OIL WELL ☐ GAS WELL ☒ OTHER ☐

2. NAME OF OPERATOR
Yates Petroleum Corporation ✓

3. ADDRESS OF OPERATOR
207 South 4th Street-Artesia, NM 88210

4. LOCATION OF WELL (Report location clearly and in accordance with any State requirements. See also space 17 below.)
At surface
1980' FSL & 1980' FWL of Section 21-17S-25E

5. LEASE DESIGNATION AND SERIAL NO.
NM-0219603

6. IF INDIAN, ALLOTTEE OR TRIBE NAME

7. UNIT AGREEMENT NAME

8. FARM OR LEASE NAME
Federal "BZ" C

9. WELL NO.
12

10. FIELD AND POOL, OR WILDCAT
Eagle Creek-Permo Penn

11. SEC., T., R., M., OR BLK. AND SURVEY OR AREA
Section 21-17S-25E
Unit K NMPM

12. COUNTY OR PARISH
Eddy

13. STATE
NM

14. PERMIT NO.

15. ELEVATIONS (Show whether DF, RT, GR, etc.)
3572' GR - 3587' KB

Check Appropriate Box To Indicate Nature of Notice, Report, or Other Data

NOTICE OF INTENTION TO:

TEST WATER SHUT-OFF ☐

FRACTURE TREAT ☐

SHOOT OR ACIDIZE ☐

REPAIR WELL ☐

(Other) ☒ Temporarily Abandon the Strawn formation

PULL OR ALTER CASING ☐

MULTIPLE COMPLETE ☐

ABANDON* ☐

CHANGE PLANS ☐

SUBSEQUENT REPORT OF:

WATER SHUT-OFF ☐

FRACTURE TREATMENT ☐

SHOOTING OR ACIDIZING ☐

(Other) ☐

REPAIRING WELL ☐

ALTERING CASING ☐

ABANDONMENT* ☐

17. DESCRIBE PROPOSED OR COMPLETED OPERATIONS (Clearly state all pertinent details, and give pertinent dates, including estimated date of starting any proposed work. If well is directionally drilled, give subsurface locations and measured and true vertical depths for all markers and zones pertinent to this work.)*

Production from the Eagle Creek Strawn (Perfs 7639-7645') has declined to about 20 MCFPD. We propose to temporarily abandon the Strawn, to perforate the Eagle Creek Permo Penn at 6823-36, 6674-98' and 6392-96'. We will stimulate as needed for production

Set a blanking plug in the packer
+ a retrievable bridge plug above

Gas will be dedicated to Transwestern Pipeline Company

RECEIVED

OCT 5 1978

U.S. GEOLOGICAL SURVEY
ARTESIA, NEW MEXICO

18. I hereby certify that the foregoing is true and correct

SIGNED Emilio L. Lora TITLE Engineer DATE 10-4-73

(This space for Federal or State office use)

APPROVED BY Laura Lora TITLE ACTING DISTRICT ENGINEER DATE OCT 11 1978

CONDITIONS OF APPROVAL, IF ANY:

NEW MEXICO OIL CONSERVATION COMMISSION
WELL LOCATION AND ACREAGE DEDICATION AT

Form C-102
Supersedes C-128
Effective 1-1-65

All distances must be from the outer boundaries of the Section.

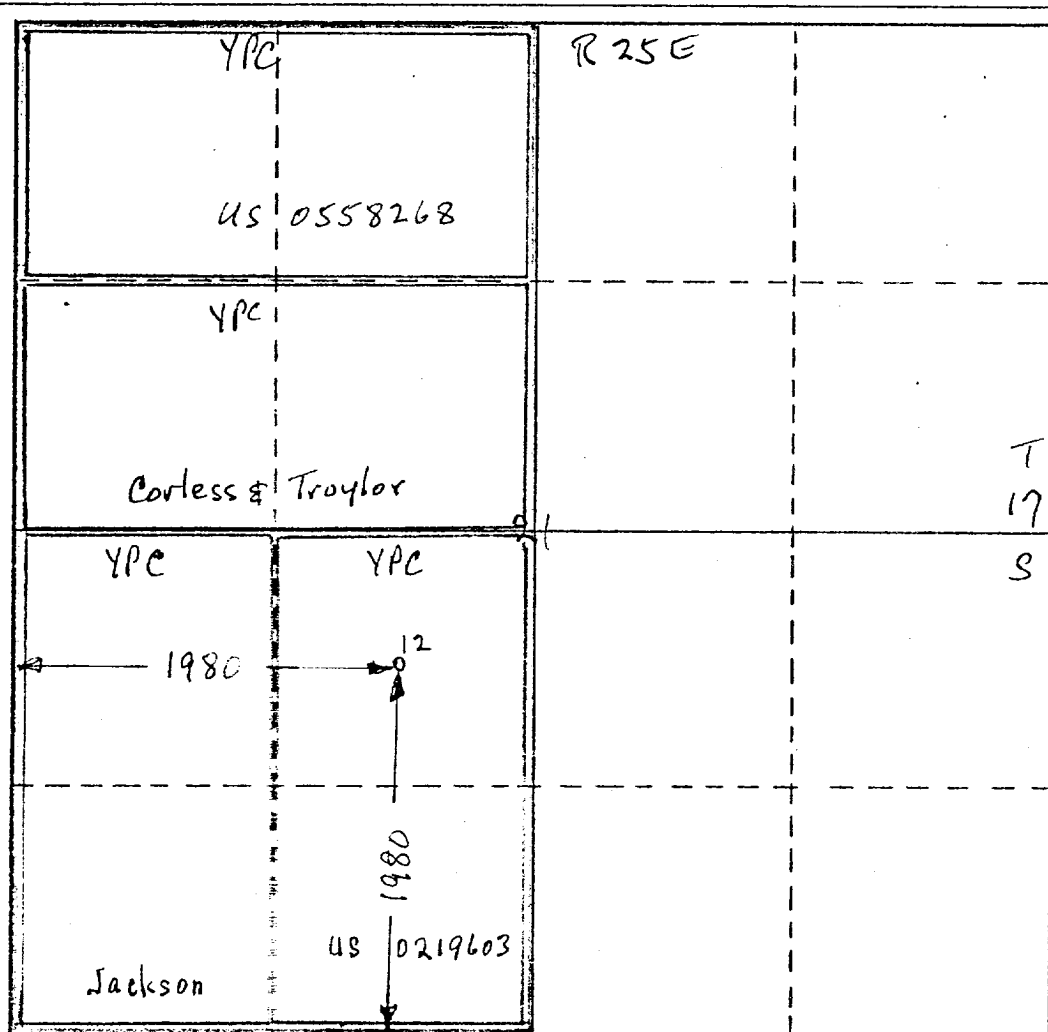
Operator <i>Yates Petroleum Corp</i>		Lease <i>Federal T32 Com</i>		Well No. <i>12</i>
Unit Letter <i>K</i>	Section <i>21</i>	Township <i>17-S</i>	Range <i>25E</i>	County <i>Eddy</i>
Actual Footage Location of Well: <i>1980</i> feet from the <i>South</i> line and <i>1980</i> feet from the <i>West</i> line				
Ground Level Elev. <i>3572</i>	Producing Formation <i>Cisco-Canyon</i>	Pool <i>Eagle Creek Perm Perm</i>	Dedicated Acreage: <i>320</i> Acres	

- Outline the acreage dedicated to the subject well by colored pencil or hachure marks on the plat below.
- If more than one lease is dedicated to the well, outline each and identify the ownership thereof (both as to working interest and royalty).
- If more than one lease of different ownership is dedicated to the well, have the interests of all owners been consolidated by communitization, unitization, force-pooling, etc?

☒ Yes ☐ No If answer is "yes," type of consolidation *Communitization*

If answer is "no," list the owners and tract descriptions which have actually been consolidated. (Use reverse side of this form if necessary.)

No allowable will be assigned to the well until all interests have been consolidated (by communitization, unitization, forced-pooling, or otherwise) or until a non-standard unit, eliminating such interests, has been approved by the Commission.



CERTIFICATION

I hereby certify that the information contained herein is true and complete to the best of my knowledge and belief.

Eddie M. Mahfood
Name
Eddie M. Mahfood
Position
Engineer
Company
Yates Petroleum Corp
Date
10-4-78

I hereby certify that the well location shown on this plat was plotted from field notes of actual surveys made by me or under my supervision, and that the same is true and correct to the best of my knowledge and belief.

Date Surveyed
Refer to Orig Plat
Registered Professional Engineer and/or Land Surveyor

Certificate No.

