

NO. OF COPIES RECEIVED	2
DISTRIBUTION	
SANTA FE	1
FILE	1
U.S.G.S.	1
LAND OFFICE	1
OPERATOR	1

NEW MEXICO OIL CONSERVATION COMMISSION

RECEIVED

OCT 9 1975

30-015-21648

Form C-101
Revised 1-4-65

APPLICATION FOR PERMIT TO DRILL, DEEPEN, OR PLUG BACK

1a. Type of Work DRILL <input checked="" type="checkbox"/> DEEPEN <input type="checkbox"/> PLUG BACK <input type="checkbox"/>		Artesia, Office	
b. Type of Well OIL WELL <input checked="" type="checkbox"/> GAS WELL <input type="checkbox"/> OTHER <input type="checkbox"/>		SINGLE ZONE <input type="checkbox"/> MULTIPLE ZONE <input type="checkbox"/>	
2. Name of Operator Yates Petroleum Corporation		7. Unit Agreement Name	
3. Address of Operator 207 South 4th Street - Artesia, NM 88210		8. Firm or Lessee Name J Lazy J	
4. Location of Well UNIT LETTER H LOCATED 2310 FEET FROM THE North LINE AND 990 FEET FROM THE East LINE OF SEC. 22 TWP. 17S R. 25E NMPM		9. Well No. 12	
		10. Field and Pool, or Wellcut Eagle Creek (S.A.)	
		11. County Eddy	
		12. Proposed Depth Approx. 1500	
		13A. Formation San Andres	
		14. Rotary or C.C. Rotary	
21. Elevations (Show whether DE, RI, etc.) 3523'		21A. Kind & Status Plug. Bond Blanket	
		21B. Drilling Contractor Byrd Drilling Co.	
		22. Approx. Date Work will start As soon as approved	

23.

PROPOSED CASING AND CEMENT PROGRAM

SIZE OF HOLE	SIZE OF CASING	WEIGHT PER FOOT	SETTING DEPTH	SACKS OF CEMENT	EST. TOP
14-3/4"	10-3/4"	32#	Approx 300'	Circulate	
9-7/8"	7"	20&23#	" 1150'	Circulate	
6 1/4"	4 1/2") 5 1/2")	Tapered 9.5# 15.5#	" 1500'	125	

Propose to drill a San Andres test. Approx. 300' of 10-3/4" casing will be run and cemented to surface to shut off surface gravel and cavings, and 7" casing will be run 100' below the Artesian zone, cemented to surface. Circulate the cement. A tapered production string will be run and cemented, perforated and Sand Frac'd for completion.

Mud Program: - Fresh water and mud w/LCM from surface to 1150', fresh water to Total Depth.

BOP Program: - BOP's to be installed on 7" casing and tested daily.

APPROVAL VALID
FOR 90 DAYS UNLESS
DRILLING COMMENCED,

EXPIRES 1-10-76

IN ABOVE SPACE DESCRIBE PROPOSED PROGRAM; IF PROPOSAL IS TO DEEPEN OR PLUG BACK, GIVE DATA ON PRESENT PRODUCTIVE ZONE AND PROPOSED NEW PRODUCTIVE ZONE, GIVE BLOWOUT PREVENTER PROGRAM, IF ANY.

I hereby certify that the information above is true and complete to the best of my knowledge and belief.

Signed David W. Book Title Geologist Date 10-8-75

(This space for State Use)

APPROVED BY W. A. Gressett TITLE SUPERVISOR, DISTRICT II DATE OCT 10 1975

CONDITIONS OF APPROVAL, IF ANY:

Cement must be circulated to
surface behind 10 3/4" & 7" casing

Notify N.M.O.C.C. in sufficient
time to witness cementing
the 7" casing

NEW MEXICO OIL CONSERVATION COMMISSION
WELL LOCATION AND ACREAGE DEDICATION PLAT

Form O-122
Supersedes O-128
Effective 1-1-65

All distances must be from the outer boundaries of the Section

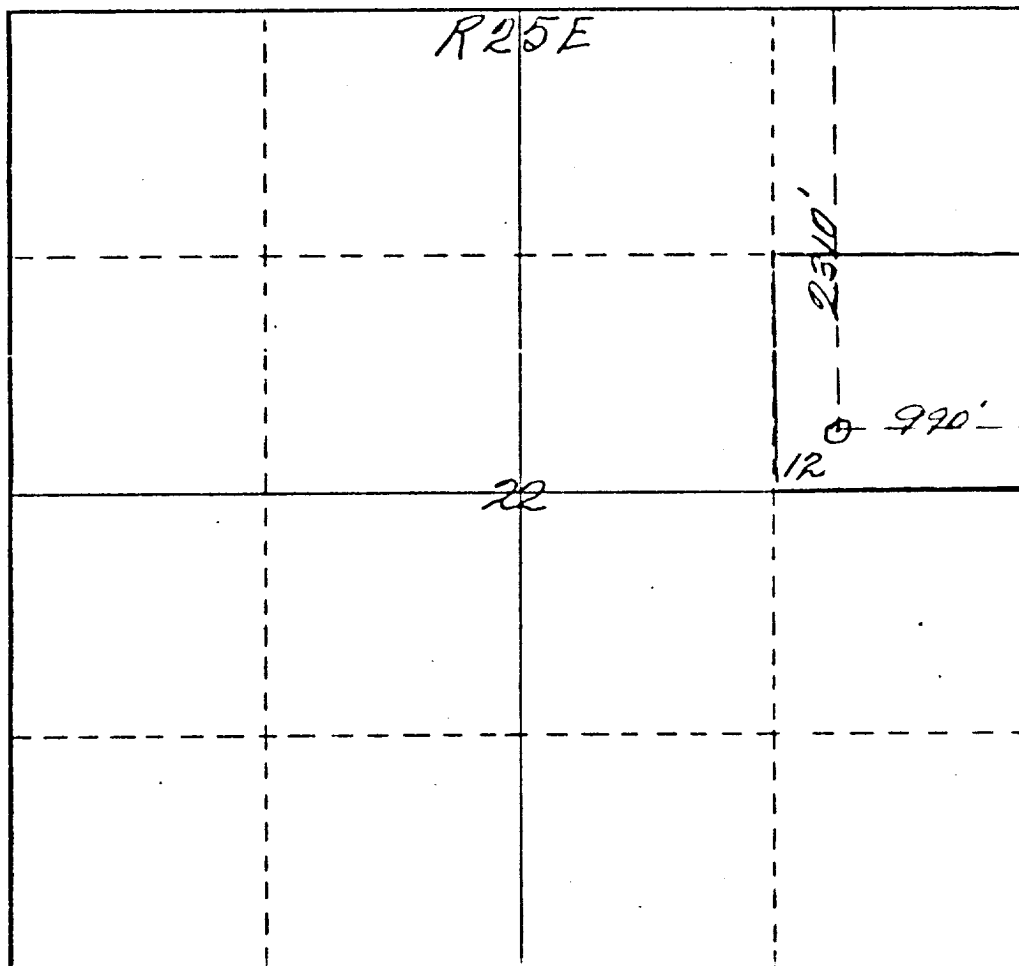
Operator <i>Yates Petroleum Corp</i>			Lease <i>Thazy J</i>		Well No. <i>12</i>
Unit Letter <i>H</i>	Section <i>22</i>	Township <i>17 South</i>	Range <i>25 East</i>	County <i>Eddy</i>	
Actual Footage Location of well: <i>2310</i> feet from the <i>North</i> line and <i>990</i> feet from the <i>East</i> line					
Ground Level Elev. <i>3523</i>	Indexing from Meridian <i>San Andres</i>		Elev <i>Eagle Creek (S. A.)</i>		Section <i>40</i>

1. Outline the acreage dedicated to the subject well by colored pencil or hatchure marks on the plat below.
2. If more than one lease is dedicated to the well, outline each and identify the ownership thereof (both as to working interest and royalty).
3. If more than one lease of different ownership is dedicated to the well, have the interests of all owners been consolidated by communitization, unitization, force-pooling, etc?

☐ Yes ☐ No If answer is "yes," type of consolidation _____

If answer is "no," list the owners and tract descriptions which have actually been consolidated (Use reverse side of this form if necessary.) _____

No allowable will be assigned to the well until all interests have been consolidated (by communitization, unitization, forced-pooling, or otherwise) or until a non-standard unit, eliminating such interests, has been approved by the Commission.



CERTIFICATION

I hereby certify that the information contained herein is true and complete to the best of my knowledge and belief

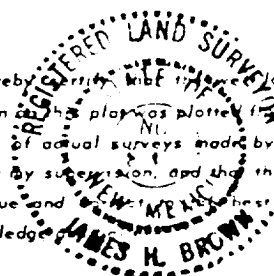
Eddie M. Mahfood

Name
Eddie M. Mahfood
Position
Engineer

Company
Yates Pet. Corporation

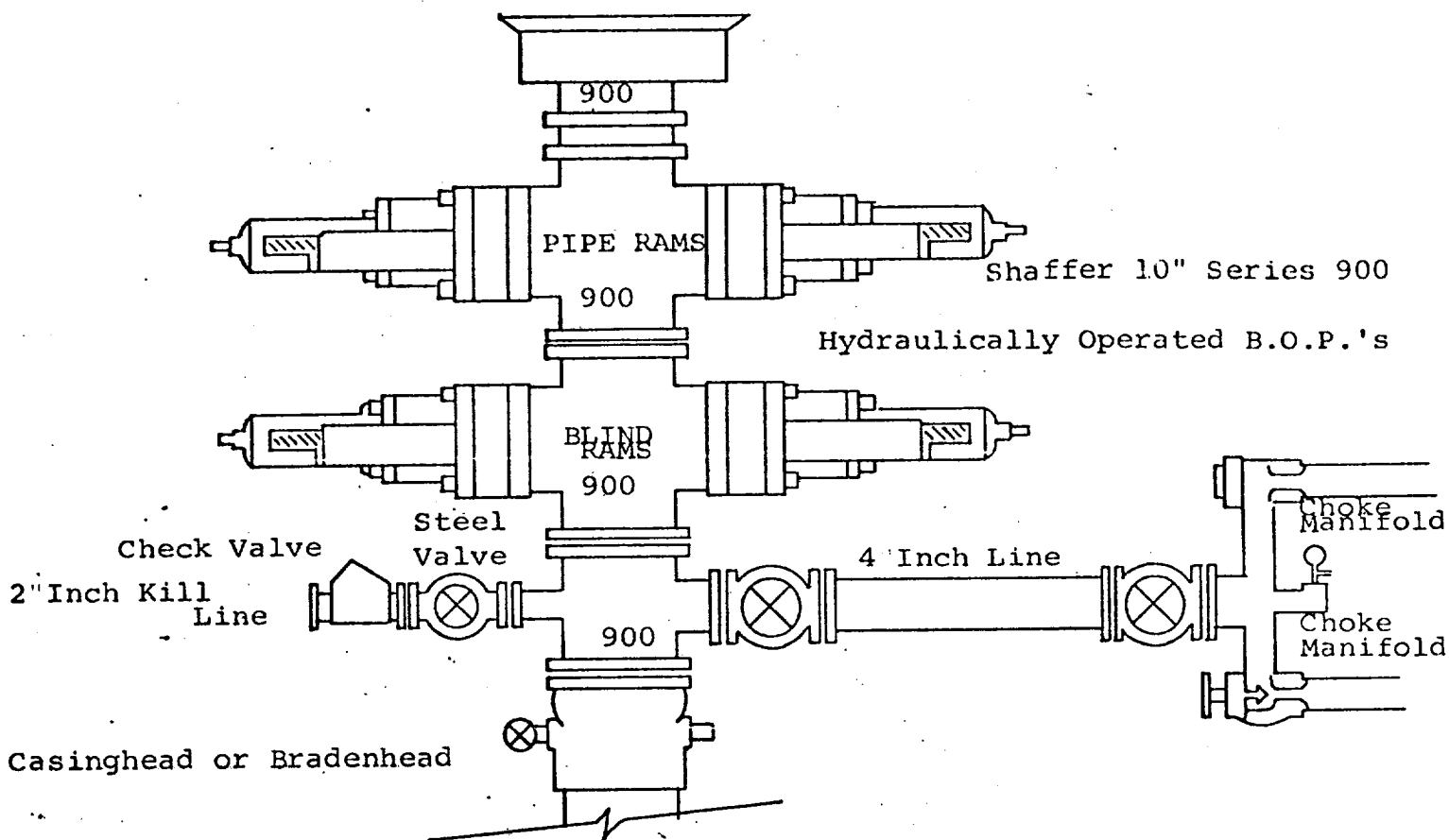
Date
10-8-75

I hereby certify that the location shown on the plat was plotted from field notes of actual surveys made by me or under my supervision, and that the same is true and correct to the best of my knowledge



Date Surveyed
August 2nd 1975
Registered Professional Engineer and Land Surveyor

James H. Brown
Certificate No. **542**



THE FOLLOWING CONSTITUTE MINIMUM BLOWOUT PREVENTER REQUIREMENTS

1. All preventers to be hydraulically operated with secondary manual controls installed prior to drilling out from under casing.
2. Choke outlet to be a minimum of 4" diameter.
3. Kill line to be of all steel construction of 2" minimum diameter.
4. All connections from operating manifolds to preventers to be all steel hole or tube a minimum of one inch in diameter.
5. The available closing pressure shall be at least 15% in excess of that required with sufficient volume to operate the B.O.P.'s.
6. All connections to and from preventer to have a pressure rating equivalent to that of the B.O.P.'s.
7. Inside blowout preventer to be available on rig floor.
8. Operating controls located a safe distance from the rig floor.
9. Hole must be kept filled on trips below intermediate casing. Operator not responsible for blowouts resulting from not keeping hole full.
10. D. P. float must be installed and used below zone of first gas intrusion.