

MEXICO OIL CONSERVATION COMMISSION
WELL LOCATION AND ACREAGE DEDICATION PLAT

Form C-102
Supersedes C-128
Effective 1-1-65

All distances must be from the outer boundaries of the Section.

Operator Yates Petroleum Corporation			Lease Federal "GR" Com		Well No. 1
Unit Letter E	Section 25	Township 17S	Range 24E	County Eddy	
Actual Postage Location of Well: 2050 feet from the North line and 660 feet from the West line					
Ground Level Elev. 3693'	Producing Formation Strawn		Pool Eagle Creek Strawn	Dedicated Acreage: 320 Acres	

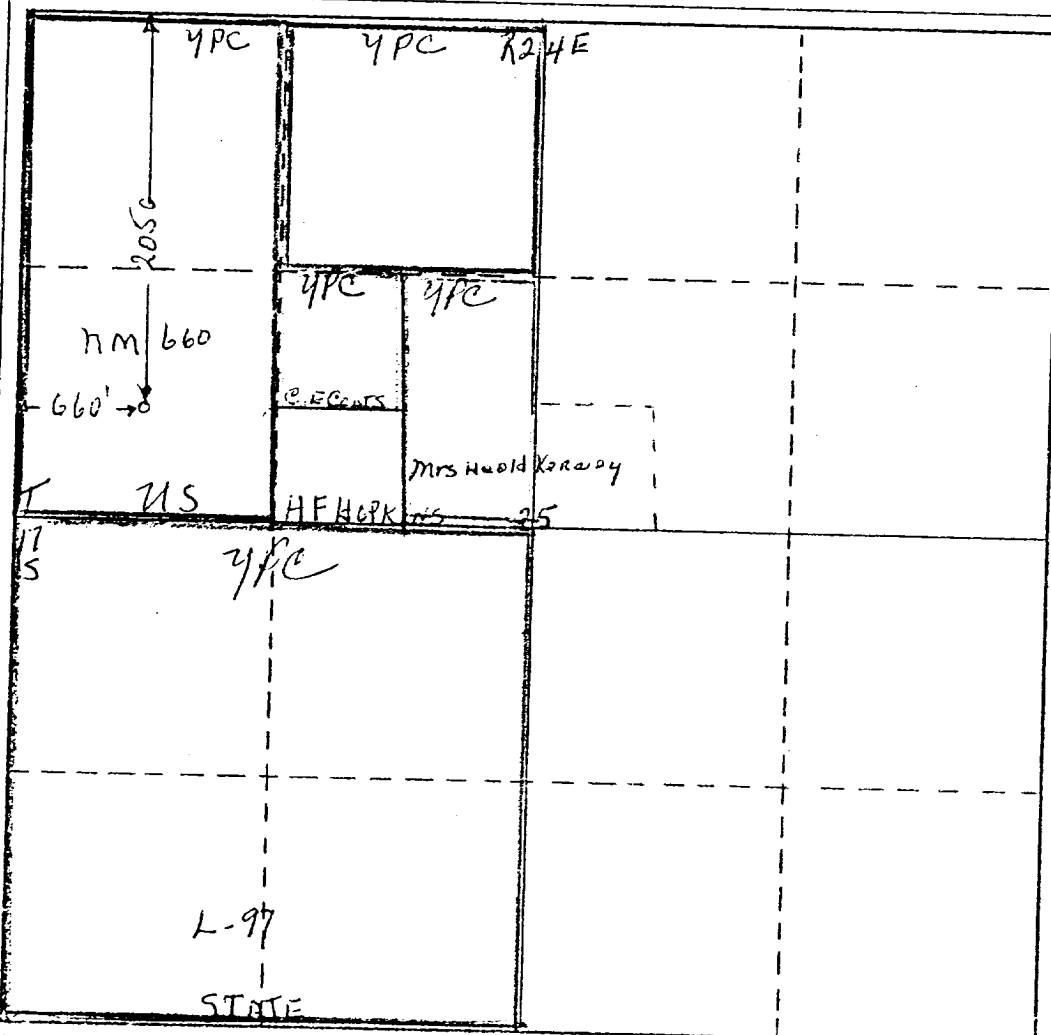
1. Outline the acreage dedicated to the subject well by colored pencil or hatchure marks on the plat below.
2. If more than one lease is dedicated to the well, outline each and identify the ownership thereof (both as to working interest and royalty).
3. If more than one lease of different ownership is dedicated to the well, have the interests of all owners been consolidated by communitization, unitization, force-pooling, etc?

☒ Yes ☐ No If answer is "yes," type of consolidation Being Communitized

If answer is "no," list the owners and tract descriptions which have actually been consolidated. (Use reverse side of this form if necessary.)

No allowable will be assigned to the well until all interests have been consolidated (by communitization, unitization, forced-pooling, or otherwise) or until a non-standard unit, eliminating such interests, has been approved by the Commission.

RECEIVED
NOV - 8 1978



CERTIFICATION O. C. C. ARTESIA, OFFICE	
I hereby certify that the information contained herein is true and complete to the best of my knowledge and belief.	
<i>Eddie M. Mahfood</i> Name Eddie M. Mahfood	
Position Engineer	
Company Yates Petroleum Corp	
Date 11-7-78	
I hereby certify that the well location shown on this plat was plotted from field notes of actual surveys made by me or under my supervision, and that the same is true and correct to the best of my knowledge and belief.	
Refer to Original Plat	
Date Surveyed Dated 10-13-76	
Registered Professional Engineer and/or Land Surveyor	
Certificate No.	