

NEW MEXICO OIL CONSERVATION COMMISSION
WELL LOCATION AND ACREAGE DEDICATION PLAT

Form C-102
Supersedes C-128
Effective 1-4-65

All distances must be from the outer boundaries of the Section.

Operator JFG Enterprises			Lease Daughterity		Well No. 1
Unit Letter B	Section 10	Township 17 S.	Range 27 E.	County Eddy	
Actual Footage Location of Well: 339 feet from the North line and 2310 feet from the East line					
Ground Level Elev. 3430	Producing Formation SA		Pool Daughterity SE	Dedicated Acreage: 40 Acres	

1. Outline the acreage dedicated to the subject well by colored pencil or hachure marks on the plat below.
2. If more than one lease is dedicated to the well, outline each and identify the owners thereof as to working interest and royalty).
3. If more than one lease of different ownership is dedicated to the well, have the interests of all owners been consolidated by communitization, unitization, force-pooling, etc?

☐ Yes ☐ No If answer is "yes," type of consolidation _____

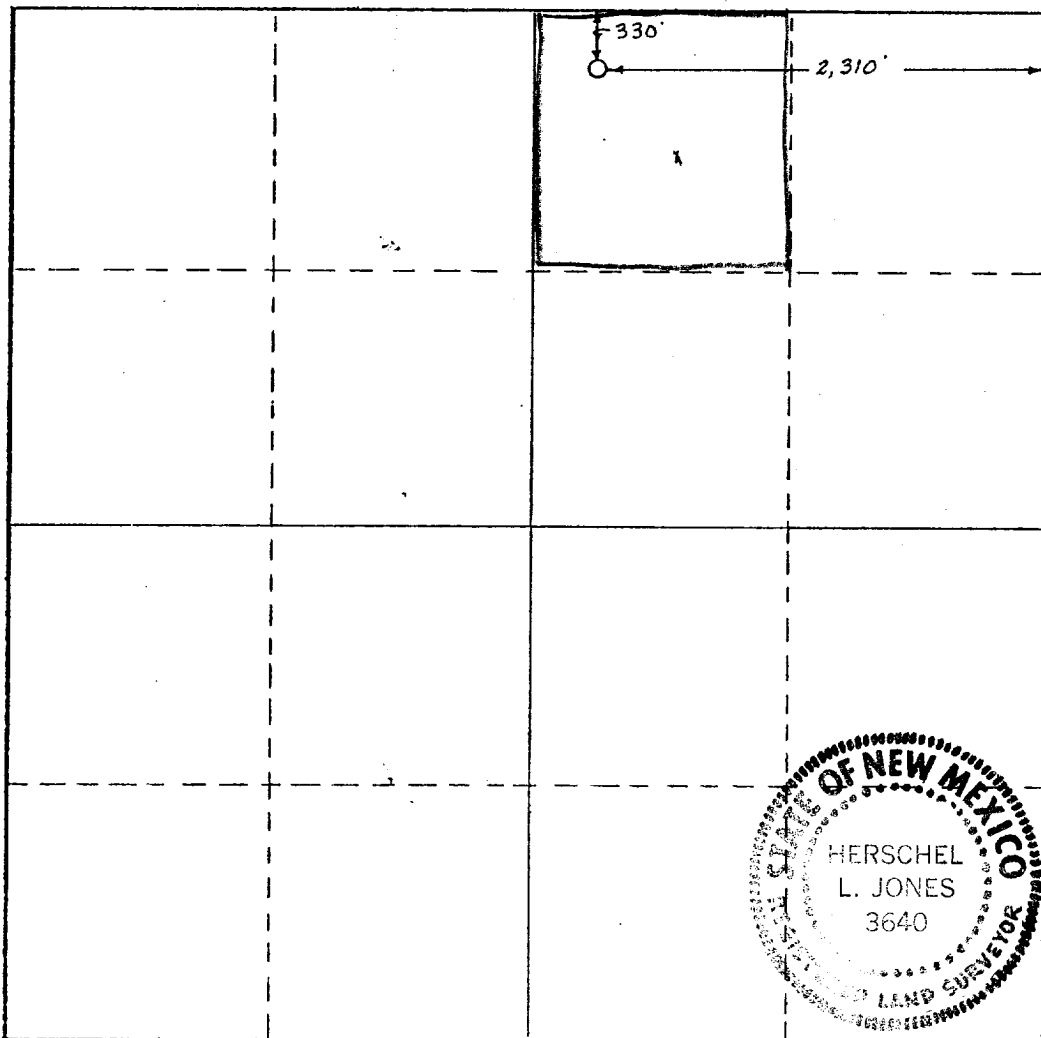
If answer is "no," list the owners and tract descriptions which have actually been consolidated. (Use reverse side of this form if necessary.) _____

No allowable will be assigned to the well until all interests have been consolidated (by communitization, unitization, forced-pooling, or otherwise) or until a non-standard unit, eliminating such interests, has been approved by the Commission.

RECEIVED

SEP 8 1977

**U.S. GEOLOGICAL SURVEY
ARTESIA, NEW MEXICO**



CERTIFICATION

I hereby certify that the information contained herein is true and complete to the best of my knowledge and belief.

Name
James E. Shuy

Position
Manager

Company
JFG ENTERPRISES

Date
SEPT 7, 1977

I hereby certify that the well location shown on this plat was plotted from field notes of actual surveys made by me or under my supervision, and that the same is true and correct to the best of my knowledge and belief.

Date Surveyed
August 30, 1977

Registered Professional Engineer and/or Land Surveyor

Herschel L. Jones
Certificate No. **3640**

