

NO. OF COPIES RECEIVED	5
DISTRIBUTION	
SANTA FE	1
FILE	1
U.S.G.S.	2
LAND OFFICE	
OPERATOR	1

NEW MEXICO OIL CONSERVATION COMMISSION

RECEIVED

OCT 28 1977

O.C.C.

ARTESIA OFFICE

APPLICATION FOR PERMIT TO DRILL, DEEPEN, OR PLUG BACK

1a. Type of Work b. Type of Well OIL WELL <input type="checkbox"/> GAS WELL <input checked="" type="checkbox"/> OTHER <input type="checkbox"/>		DRILL <input checked="" type="checkbox"/> DEEPEN <input type="checkbox"/> PLUG BACK <input type="checkbox"/>		SINGLE ZONE <input type="checkbox"/> MULTIPLE ZONE <input type="checkbox"/>	
2. Name of Operator Yates Petroleum Corporation					
3. Address of Operator 207 South 4th Street - Artesia, NM 88210					
4. Location of Well UNIT LETTER I LOCATED 1980 FEET FROM THE South LINE AND 660 FEET FROM THE East LINE OF SEC. 21 TWP. 17S RGE. 26E NMPM					
5A. Indicate Type of Lease STATE <input type="checkbox"/> FILE <input checked="" type="checkbox"/>					
5. State Oil & Gas Lease No.					
7. Unit Agreement Name					
8. Farm or Lease Name Siegenthaler "IS" Co					
9. Well No. 1					
10. Field and Pool, or Wildcat Und. Kennedy Farms Morrow					
12. County Eddy					
21. Elevations (Show whether DT, RL, etc.) 3362' GR		21A. Kind & Status Plug Bond Blanket		21B. Drilling Contractor Unknown	
		19. Proposed Depth Approx 8750'		19A. Formation Morrow	
				20. Rotary or C.T. Rotary	
				22. Approx. Date Work will start As soon as approved	

23.

PROPOSED CASING AND CEMENT PROGRAM

SIZE OF HOLE	SIZE OF CASING	WEIGHT PER FOOT	SETTING DEPTH	SACKS OF CEMENT	EST. TOP
17½"	13-3/8"	48#	Approx 460'	Circulate	
12½"	9-5/8"	32.3#	" 1425'	Circulate	
7-7/8"	5½"	15-17#	" 8750'	250 sx.	

Propose to drill to approx 8750'-test the Morrow and intermediate formations. Approximately 460' of surface casing will be run and cemented to shut off gravel and cavings, intermediate casing will be run to 100' below the Artesian Water Zone and cemented to surface, if production is encountered 5½" production casing will be run and cemented.

Mud Program: - FW gel and LCM from surface to 1425' (dry drill if unable to circulate); fresh water to 5300'; 2% KCL wtr to 7900' and Flosal-Drispak to TD.

BOP Program: - BOP's and hydril will be installed on intermediate casing, pipe rams and hydril tested daily for operation. ~~DRILLING COMMENCED~~

Gas acreage not dedicated.

IN ABOVE SPACE DESCRIBE PROPOSED PROGRAM. IF PROPOSAL IS TO DEEPEN OR PLUG BACK, GIVE DATA ON PRESENT PRODUCTION ZONE AND PROPOSED NEW PRODUCTION ZONE. GIVE BLOWOUT PREVENTER PROGRAM, IF ANY.

I hereby certify that the information above is true and complete to the best of my knowledge and belief.

Signed Christine Lombard Title Geol. Secty Date 10-27-77

(This space for State Use)

APPROVED BY W.A. Gussett TITLE SUPERVISOR, DISTRICT II DATE OCT 31 1977

CONDITIONS OF APPROVAL, IF ANY:

Cement must be circulated to surface behind 13½"-9½" casing

* Notify N.M.O.C.C. in sufficient time to witness cementing the 9 5/8" casing

NEW MEXICO OIL CONSERVATION COMMISSION
WELL LOCATION AND ACREAGE DEDICATION PLAT

Form C-102
 Supersedes C-128
 Effective 1-1-65

All distances must be from the outer boundaries of the Section.

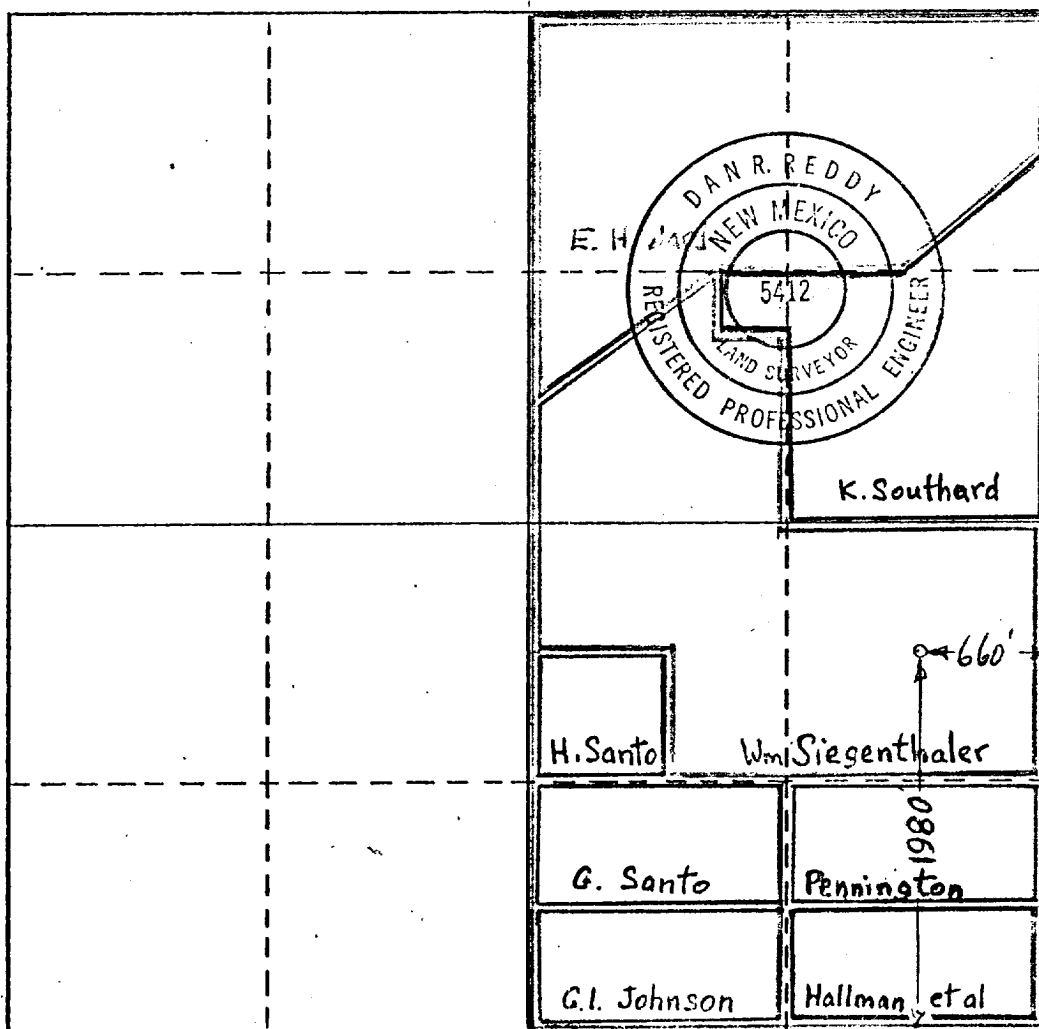
Operator Yates Petroleum Corporation			Lease Siegenthaler "IS" Com		Well No. 1
Unit Letter I	Section 21	Township 17 South	Range 26 East	County Eddy	
Actual Footage Location of Well: 1980 feet from the South line and 660 feet from the East line					
Ground Level Elev. 3362	Producing Formation Morrow	Pool Undesignated		Dedicated Acreage 320	

1. Outline the acreage dedicated to the subject well by colored pencil or hachure marks on the plat below.
2. If more than one lease is dedicated to the well, outline each and identify the ownership thereof (both as to working interest and royalty).
3. If more than one lease of different ownership is dedicated to the well, have the interests of all owners been consolidated by communitization, unitization, force-pooling, etc?

☒ Yes ☐ No If answer is "yes," type of consolidation **Being Communitized**

If answer is "no," list the owners and tract descriptions which have actually been consolidated. (Use reverse side of this form if necessary.) _____

No allowable will be assigned to the well until all interests have been consolidated (by communitization, unitization, forced-pooling, or otherwise) or until a non-standard unit, eliminating such interests, has been approved by the Commission.



CERTIFICATION

I hereby certify that the information contained herein is true and complete to the best of my knowledge and belief.

Eddie M. Mahfood
 Name

EDDIE M. MAHFOOD

Position
ENGINEER

Company
YATES PETROLEUM CORP.

Date
9-30-77

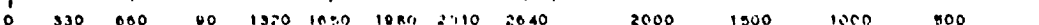
I hereby certify that the well location shown on this plat was plotted from field notes of actual surveys made by me or under my supervision, and that the same is true and correct to the best of my knowledge and belief.

Date Surveyed
9/28/77

Registered Professional Engineer and/or Land Surveyor

Dan R. Reddy
 Certificate No.

PE & LS #5412



Rotating head if necessary
2" Fill up Line

ROTATING
BOP
2000 psi

Flowline

ANNULAR BOP

(Hydrill)

900

PIPE RAMS

Shaffer 10" Series 900

900

Hydraulically Operated B.O.P.'s

BLIND
RAMS

900

Steel
Valve

Check Valve

2" Inch Kill
Line

4" Inch Line

Choke
Manifold

Choke
Manifold

900

Casinghead or Bradenhead

THE FOLLOWING CONSTITUTE MINIMUM BLOWOUT PREVENTER REQUIREMENTS

1. All preventers to be hydraulically operated with secondary manual controls installed prior to drilling out from under casing.
2. Choke outlet to be a minimum of 4" diameter.
3. Kill line to be of all steel construction of 2" minimum diameter.
4. All connections from operating manifolds to preventers to be all steel. hole or tube a minimum of one inch in diameter.
5. The available closing pressure shall be at least 15% in excess of that required with sufficient volume to operate the B.O.P.'s.
6. All connections to and from preventer to have a pressure rating equivalent to that of the B.O.P.'s.
7. Inside blowout preventer to be available on rig floor.
8. Operating controls located a safe distance from the rig floor.
9. Hole must be kept filled on trips below intermediate casing. Operator not responsible for blowouts resulting from not keeping hole full.
10. D. P. float must be installed and used below zone of first gas intrusion.