

UNITED STATES
DEPARTMENT OF THE INTERIOR

GEOLOGICAL SURVEY

APPLICATION FOR PERMIT TO DRILL, DEEPEN, OR PLUG BACK

1a. TYPE OF WORK

DRILL ☒DEEPEN ☐PLUG BACK ☐

b. TYPE OF WELL

OIL
WELL ☒GAS
WELL ☐OTHER ☐SINGLE
ZONE ☐MULTIPLE
ZONE ☐

2. NAME OF OPERATOR

C.E. LaRue & B.N. Muncy, Jr. ✓

APR 27 1983

3. ADDRESS OF OPERATOR

P.O. Box 196, Artesia, NM 88210

O. C. D.

4. LOCATION OF WELL (Report location clearly and in accordance with any special requirements.)

At surface

2310'FNL & 425'FEL Section 15, T16S, R31E
At proposed prod. zone

14. DISTANCE IN MILES AND DIRECTION FROM NEAREST TOWN OR POST OFFICE*

8 miles North of Maljamar, N.M.

15. DISTANCE FROM PROPOSED*

LOCATION TO NEAREST

PROPERTY OR LEASE LINE, FT.
(Also to nearest drlg. unit line, if any)

425'

16. NO. OF ACRES IN LEASE

120

18. DISTANCE FROM PROPOSED LOCATION*

TO NEAREST WELL, DRILLING, COMPLETED,
OR APPLIED FOR, ON THIS LEASE, FT.

1085'

19. PROPOSED DEPTH

4050'

17. NO. OF ACRES ASSIGNED
TO THIS WELL

40

20. ROTARY OR CABLE TOOLS

Rotary

21. ELEVATIONS (Show whether DF, RT, GR, etc.)

4231.5 GL

22. APPROX. DATE WORK WILL START*

April 28, 1983

23.

PROPOSED CASING AND CEMENTING PROGRAM

SIZE OF HOLE	SIZE OF CASING	WEIGHT PER FOOT	SETTING DEPTH	QUANTITY OF CEMENT
12 3/4"	8 5/8"	24#	900'	400 Sacks Circulated
7 7/8"	5 1/2"	15 1/2#	4050'	325 Sacks

Surface formation is Permian. Surface casing to be set on top of salt and circulated. Estimated formation tops: salt 900', Yates 2190', Queen 3040', Penrose 3340' with possible oil or gas shows, Premier 3770' with possible oil or gas shows, San Andres 3820' Regan Type 8"-3000# BOP will be used, with rams closed and pressure tested prior to drilling known oil or gas zones. Drilling mud will be fresh water gel with viscosity of approximately 34⁰. Logs will be Sidewall Neutron Porosity and Dual Laterolog Micro SFL. No testing will be done until after pipe has been cemented and well fracture treated. There have been no water flows, abnormal pressure, or H₂S encountered in this area.

IN ABOVE SPACE DESCRIBE PROPOSED PROGRAM: If proposal is to deepen or plug back, give data on present productive zone and proposed new productive zone. If proposal is to drill or deepen directionally, give pertinent data on subsurface locations and measured and true vertical depths. Give blowout preventer program, if any.

24.

SIGNED

TITLE

Operator

DATE 4/16/83

(This space for Federal or State office use)

PERMIT NO.

APPROVAL DATE

APPROVED BY

TITLE

DATE 4/25/83

CONDITIONS OF APPROVAL, IF ANY:

*See Instructions On Reverse Side

APPROVAL SUBJECT TO
GENERAL REQUIREMENTS AND
SPECIAL STIPULATIONS
ATTACHED

MEXICO OIL CONSERVATION COMMISSION
WELL LOCATION AND ACREAGE DEDICATION PLAT

Form C-102
 Supersedes C-128
 Effective 1-1-65

All distances must be from the outer boundaries of the Section.

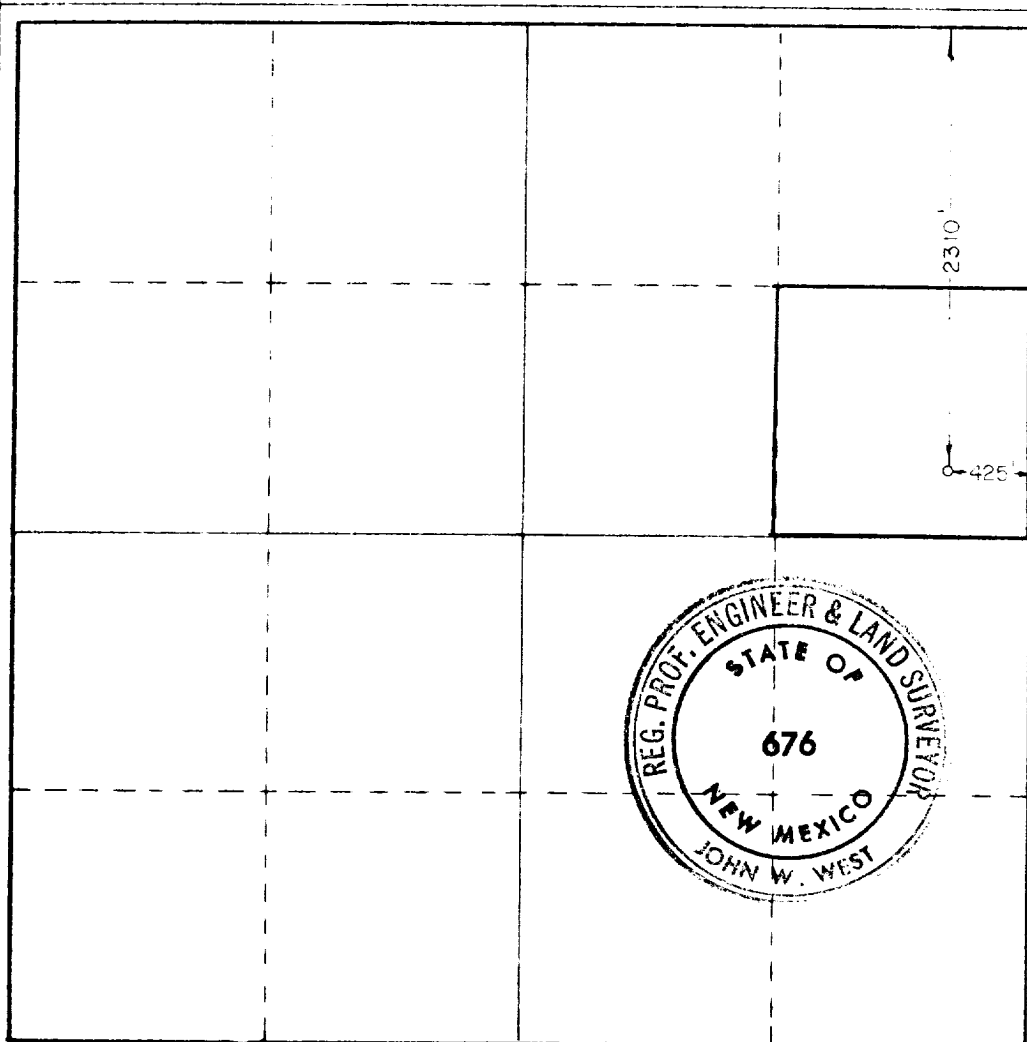
Operator C. E. LaRue & B. N. Muncy			Lease Read & Stevens Federal		Well No. 1
Tract Letter H	Section 15	Township 16 South	Range 31 East	County Eddy County	
Actual Footage Location of Well: 2310 feet from the North line and 425 feet from the East line					
Ground Level Elev. 4231.5	Producing Formation GRAYBURG	Pool SQUARE LAKE NORTH (UNDESIGNATED)	Dedicated Acreage: 40 A.P.		

1. Outline the acreage dedicated to the subject well by colored pencil or hachure marks on the plat below.
2. If more than one lease is dedicated to the well, outline each and identify the ownership thereof (both as to working interest and royalty).
3. If more than one lease of different ownership is dedicated to the well, have the interests of all owners been consolidated by communitization, unitization, force-pooling, etc?

☐ Yes ☐ No If answer is "yes," type of consolidation _____

If answer is "no," list the owners and tract descriptions which have actually been consolidated (Use reverse side of this form if necessary.) _____

No allowable will be assigned to the well until all interests have been consolidated (by communitization, unitization, forced-pooling, or otherwise) or until a non-standard unit, eliminating such interests, has been approved by the Commission.



CERTIFICATION

I hereby certify that the information contained herein is true and complete to the best of my knowledge and belief.

[Signature]
 Operator

C.E. LaRue and B.N. Muncy, Jr.

[Signature]
 Date Surveyed

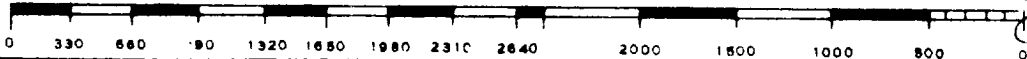
I hereby certify that the well location shown on this plat was plotted from field notes of actual surveys made by me or under my supervision, and that the same is true and correct to the best of my knowledge and belief.

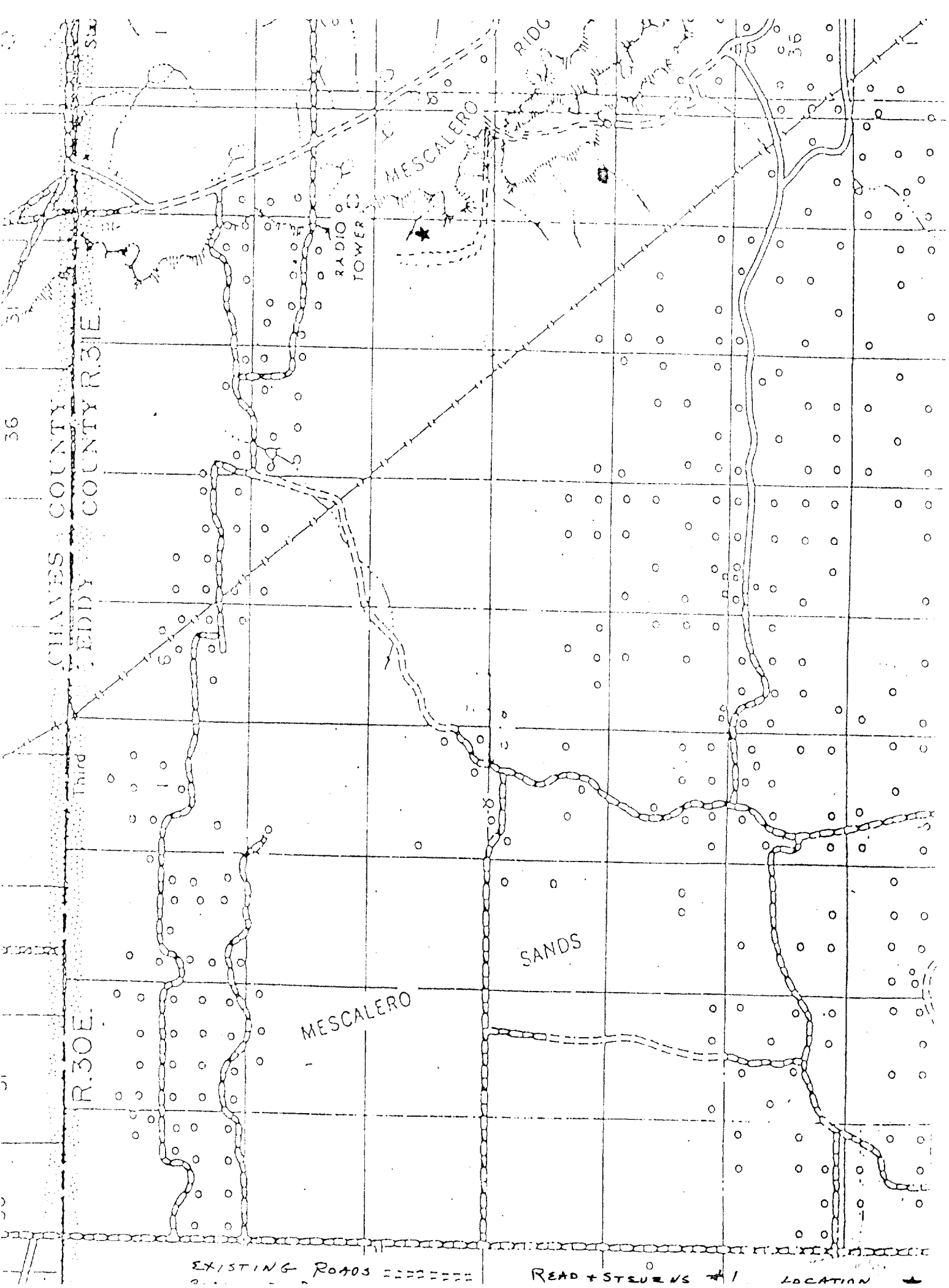
Date Surveyed
April 12, 1983

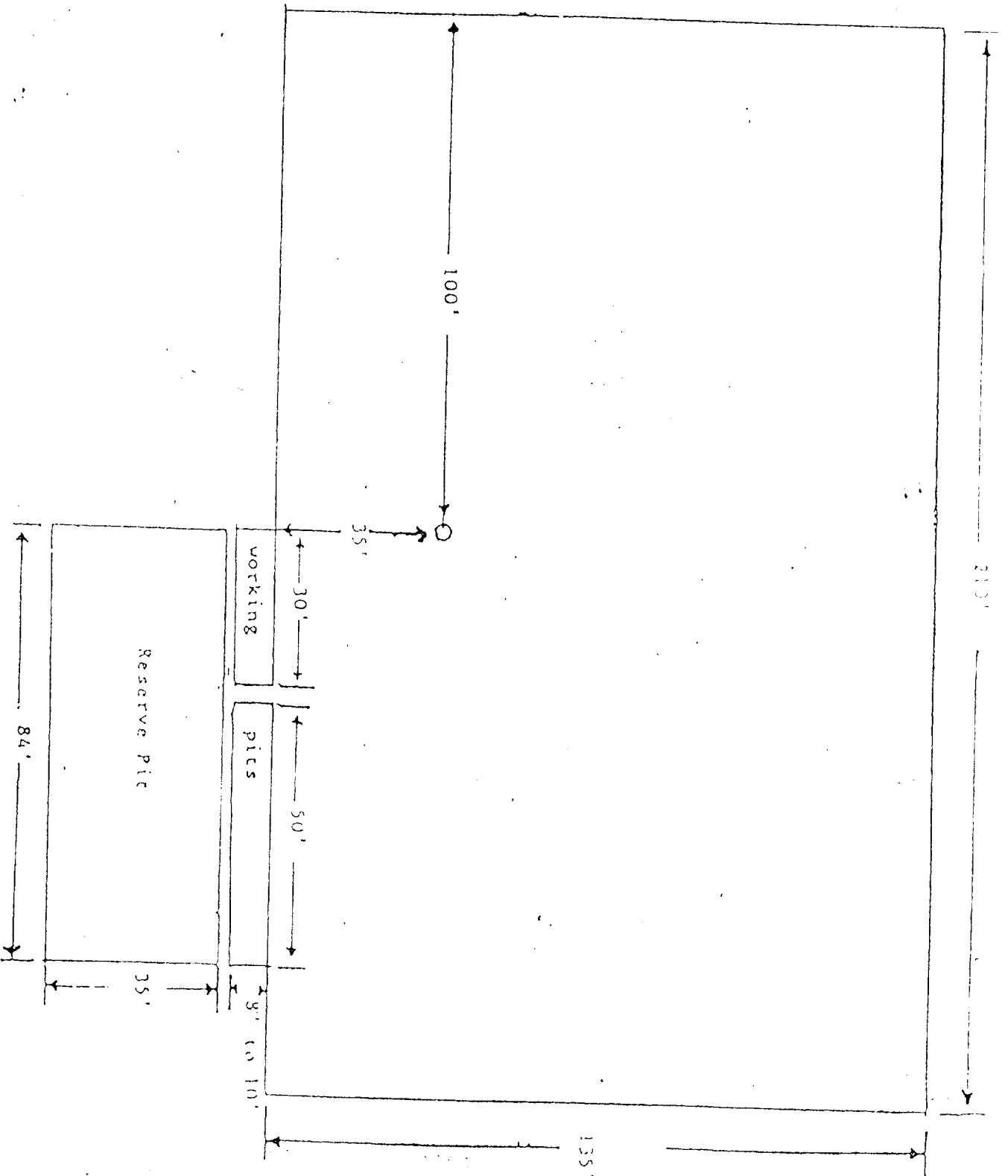
Registered Professional Engineer
 and/or Land Surveyor

[Signature]

Certificate No.
JOHN W. WEST NO. 676







C.E. LaRue and B.N. Muncy, Jr.

READ + STEVENS & CO.
EXHIBIT C

9286

REGAN OFFSHORE INTERNATIONAL, INC.

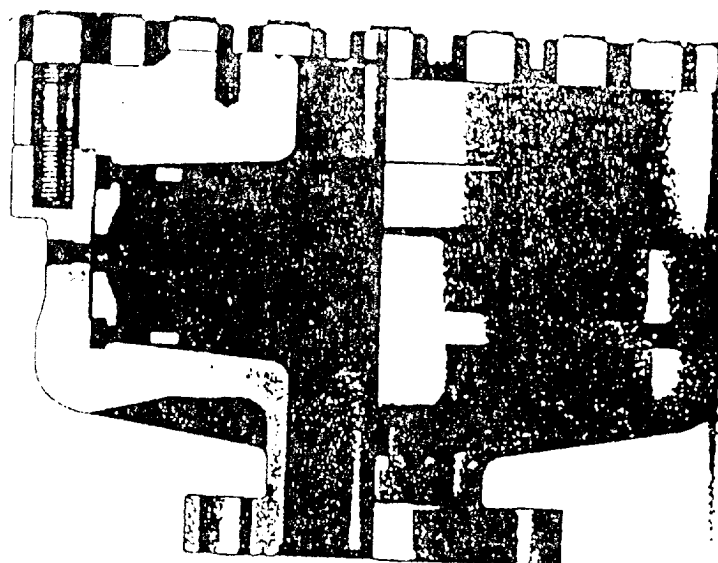
Torrance,

REGAN BLOWOUT PREVENTERS

The Regan Torus Blowout Preventer is used primarily on production and workover rigs for well control up to 3000 PSI working pressure.

DESIGN FEATURES

- The Torus Preventer is designed for minimum height to facilitate its use with production and workover rigs.
- The rubber packer will conform to any object in the well bore. Sealing ability is not affected by minor damage to the inner bore.
- The packer is in an open hole at full working pressure.
- The dual packer design increases the reliability of the preventer since the outer rubber is never exposed to the well bore. Under ordinary service, the outer packer is rarely replaced.



TORUS BLOWOUT PREVENTER
PATENTED

SPECIFICATIONS

Nominal Size	Test Pressure (psi)	DIMENSIONS (in.)			Weight (lb.)	End Flanges (1)	R/RX Ring Grooves	Side Outlet	(1) Bottom Flange holes for use with either 2000 psi API-6B flange or used with obsolete 2000 psi flange. Top flange slotted for 3000 psi flange unless otherwise noted.
		Outside Diameter	Thru Bore	Overall Height					
5	1500	22	2 1/4	19 1/2	1360	Nom. 6	45	None	
6	1500	22 1/2	2 1/4	21 1/2	1550	Nom. 6	45	2" L.P.	
8	1500	24	3	25	2675	Nom. 8	49	None	

C.E. LaRue and B.N. Muncy, Jr.
READ & STEVENS # 1