

UNITED STATES
DEPARTMENT OF THE INTERIOR
GEOLOGICAL SURVEY
Artesia, NM 88210

5. LEASE DESIGNATION AND SERIAL NO.

NM-41642

6. IF INDIAN, ALLOTTEE OR TRIBE NAME

7. UNIT AGREEMENT NAME

8. FARM OR LEASE NAME

Exxon Federal

9. WELL NO.

10. FIELD AND POOL, OR WILDCAT

High Lonesome

11. SEC., T., R., M., OR BLK.
AND SURVEY OR AREA

Sec. 28-T16-R29E

12. COUNTY OR PARISH

Eddy

13. STATE

New Mexico

APPLICATION FOR PERMIT TO DRILL, DEEPEN, OR PLUG BACK

1a. TYPE OF WORK

DRILL ☒DEEPEN ☐PLUG BACK ☐

b. TYPE OF WELL

OIL
WELL ☒GAS
WELL ☐

OTHER

SINGLE
ZONE ☐MULTIPLE
ZONE ☐

2. NAME OF OPERATOR

McClellan Oil Corporation

3. ADDRESS OF OPERATOR

P. O. Dr. 730 Roswell, New Mexico 88202

4. LOCATION OF WELL (Report location clearly and in accordance with any State requirements.)*

At surface

990' FNL & 660' FWL

At proposed prod. zone

Same

14. DISTANCE IN MILES AND DIRECTION FROM NEAREST TOWN OR POST OFFICE*

11 miles north of Loco Hills, New Mexico

15. DISTANCE FROM PROPOSED*

LOCATION TO NEAREST
PROPERTY OR LEASE LINE, FT.
(Also to nearest drlg. unit line, if any)

660'

16. NO. OF ACRES IN LEASE

280

17. NO. OF ACRES ASSIGNED
TO THIS WELL

40

18. DISTANCE FROM PROPOSED LOCATION*

TO NEAREST WELL, DRILLING, COMPLETED,
OR APPLIED FOR, ON THIS LEASE, FT.330' P&A
1974' Prod

19. PROPOSED DEPTH

2,020'

20. ROTARY OR CABLE TOOLS

Rotary

21. ELEVATIONS (Show whether DF, RT, GR, etc.)

3635 GL

22. APPROX. DATE WORK WILL START*

January 30, 1986

23.

PROPOSED CASING AND CEMENTING PROGRAM

SIZE OF HOLE	SIZE OF CASING	WEIGHT PER FOOT	SETTING DEPTH	QUANTITY OF CEMENT
12 1/4"	8 5/8"	24#	290'	300 Sx "C" + 2% CaCl Circulate
7 7/8"	5 1/2"	10.5#	2020'	400 Sx Class "C"

Propose to drill a new well to test the Penrose Sand. Will run 8 5/8" casing to the top of the salt. Will drill with fresh water and mud up to 30 viscosity mud at total depth. If production is indicated, will run 5 1/2" casing and attempt completion.

BOP Program: Will use 10" Series 900 Type "E" Shaffer double hydraulic 6000 psi test, 3000 psi working pressure blowout preventer. The BOP will be installed while rigging up and be used full time. See Exhibit "E".

RECEIVED BY
JAN 30 1986
O. C. D.
ARTESIA, OFFICE

IN ABOVE SPACE DESCRIBE PROPOSED PROGRAM: If proposal is to deepen or plug back, give data on present productive zone and proposed new productive zone. If proposal is to drill or deepen directionally, give pertinent data on subsurface locations and measured and true vertical depths. Give blowout preventer program, if any.

24.

SIGNED

Gregory S. Smith

TITLE

Agent for:
McClellan Oil Corp.

DATE Jan. 17, 1986

(This space for Federal or State office use)

PERMIT NO.

APPROVAL DATE

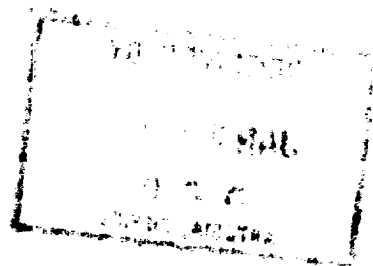
APPROVED BY

TITLE

DATE

CONDITIONS OF APPROVAL, IF ANY:

APPROVAL SUBJECT TO
GENERAL REQUIREMENTS AND
SPECIAL STIPULATIONS
ATTACHED



All distances must be from the outer boundaries of the section.

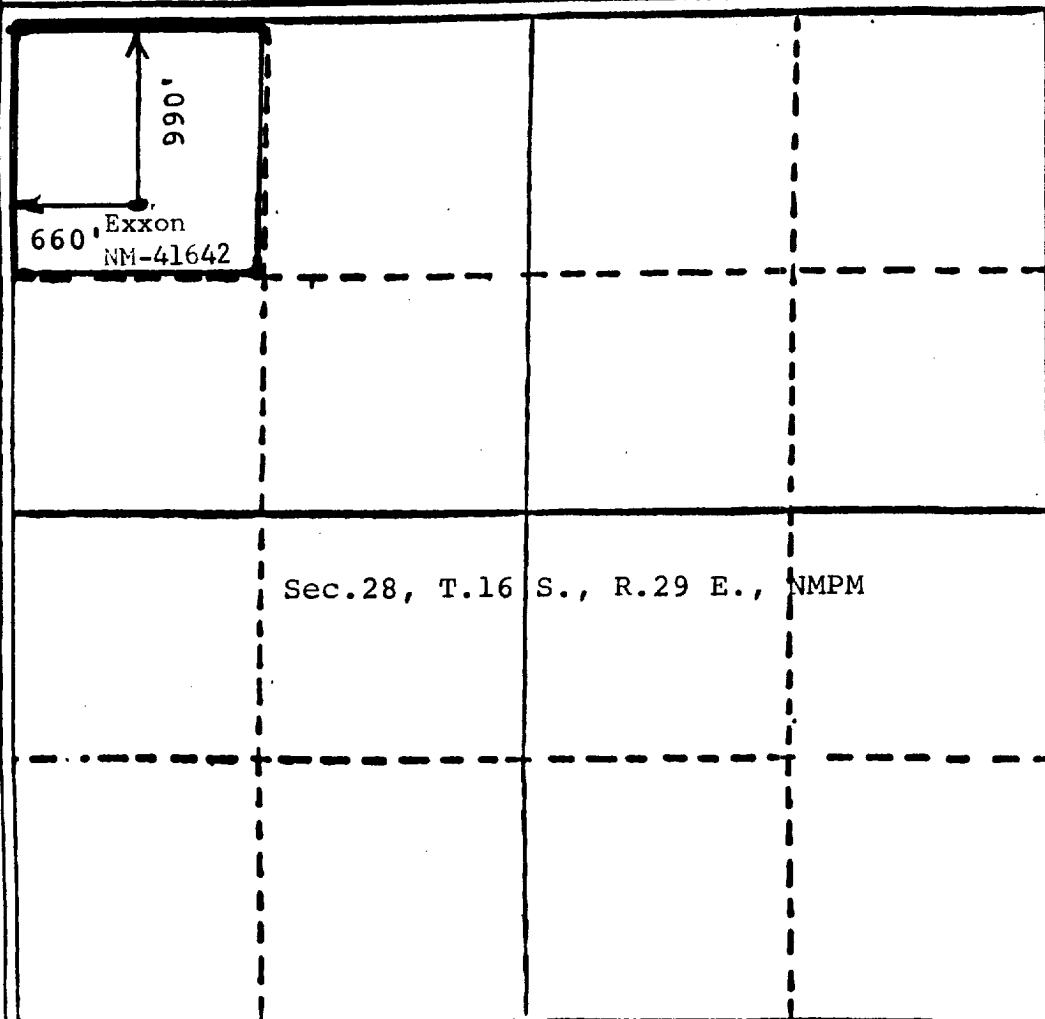
Operator McClellan Oil Corp.			Lessee Exxon Federal		Well No. 2
Unit Label D	Section 28	Township 16 South	Range 29 East	County Eddy	
Actual Footage Location of Well 990 feet from the North line and 660 feet from the West line					
Ground Level Elev. 3635	Producing Formation Penrose		Pool High Lonesome		Dedicated Acreage 40 Acres

1. Outline the acreage dedicated to the subject well by colored pencil or hatchure marks on the plat below.
2. If more than one lease is dedicated to the well, outline each and identify the ownership thereof (both as to working interest and royalty).
3. If more than one lease of different ownership is dedicated to the well, have the interests of all owners been consolidated by communitization, unitization, force-pooling, etc?

☐ Yes ☐ No - If answer is "yes," type of consolidation _____

If answer is "no," list the owners and tract descriptions which have actually been consolidated. (Use reverse side of this form if necessary.) _____

No allowable will be assigned to the well until all interests have been consolidated (by communitization, unitization, force-pooling, or otherwise) or until a non-standard unit, eliminating such interests, has been approved by the Division



CERTIFICATION

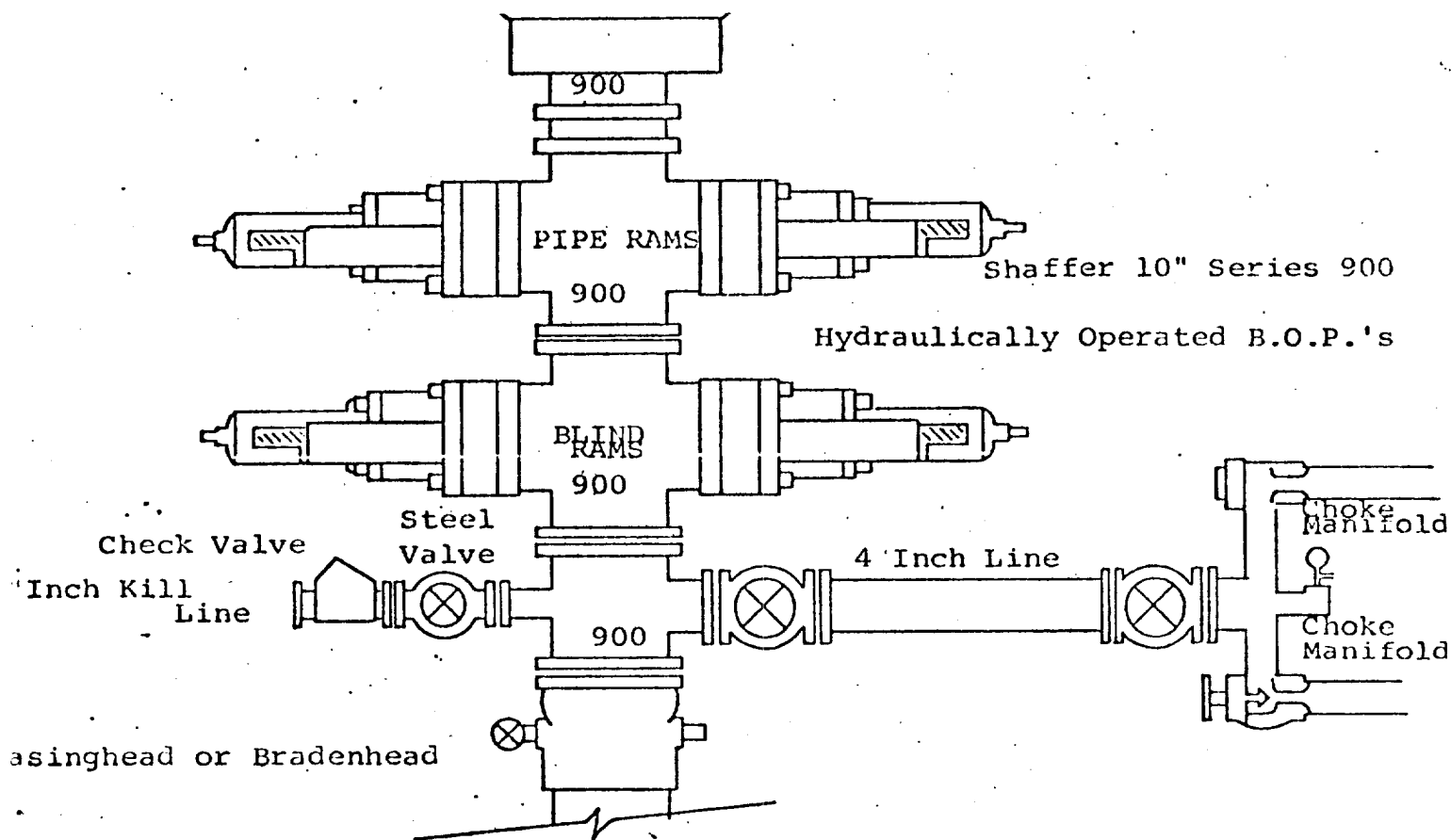
I hereby certify that the information contained herein is true and complete to the best of my knowledge and belief.

Mark McClellan

Name
Mark McClellan
Position
Geologist
Company
McClellan Oil Corp.
Date
1/16/86

I hereby certify that the well location shown on this plat was plotted from field notes of actual surveys made by me or under my supervision, and that the same is true and correct to the best of my knowledge and belief.

Date Surveyed
January 15, 1986
Professional Engineer and/or Land Surveyor
John D. Jaques, P.E. & L.S.
6290
PROFESSIONAL ENGINEER



THE FOLLOWING CONSTITUTE MINIMUM BLOWOUT PREVENTER REQUIREMENTS

- . All preventers to be hydraulically operated with secondary manual controls installed prior to drilling out from under casing.
- . Choke outlet to be a minimum of 4" diameter.
- . Kill line to be of all steel construction of 2" minimum diameter.
- . All connections from operating manifolds to preventers to be all steel. hole or tube a minimum of one inch in diameter.
- . The available closing pressure shall be at least 15% in excess of that required with sufficient volume to operate the B.O.P.'s.
- . All connections to and from preventer to have a pressure rating equivalent to that of the B.O.P.'s.
- . Inside blowout preventer to be available on rig floor.
- . Operating controls located a safe distance from the rig floor.
- . Hole must be kept filled on trips below intermediate casing. Operator not responsible for blowouts resulting from not keeping hole full.
- . O. D. P. float must be installed and used below zone of first gas intrusion.

EXHIBIT "E"
 McCLELLAN OIL CORPORATION
 Exxon Federal, Well No. 2
 BOP Specifications

APPLICATION FOR DRILLING

McCLELLAN OIL CORPORATION
Exxon Federal, Well No. 2
990' FNL & 660' FWL, Sec. 28-T16S-R29E
Eddy County, New Mexico
Lease No.: NM-41642
(Development Well)

In conjunction with Form 9-331C, Application for Permit to Drill subject well, McClellan Oil Corporation submits the following items of pertinent information in accordance with BLM requirements:

1. The geologic surface formation is recent Permian with quaternary alluvium and other surficial deposits.
2. The estimated tops of geologic markers are as follows:

Salt	304'	Queen	1650'
Yates	860'	Penrose	1872'
7-Rivers	1080'	T. D.	2020'
3. The estimated depth at which anticipated water, oil or gas formations are expected to be encountered:

Water: Random fresh water sands from surface to 300'+/-.

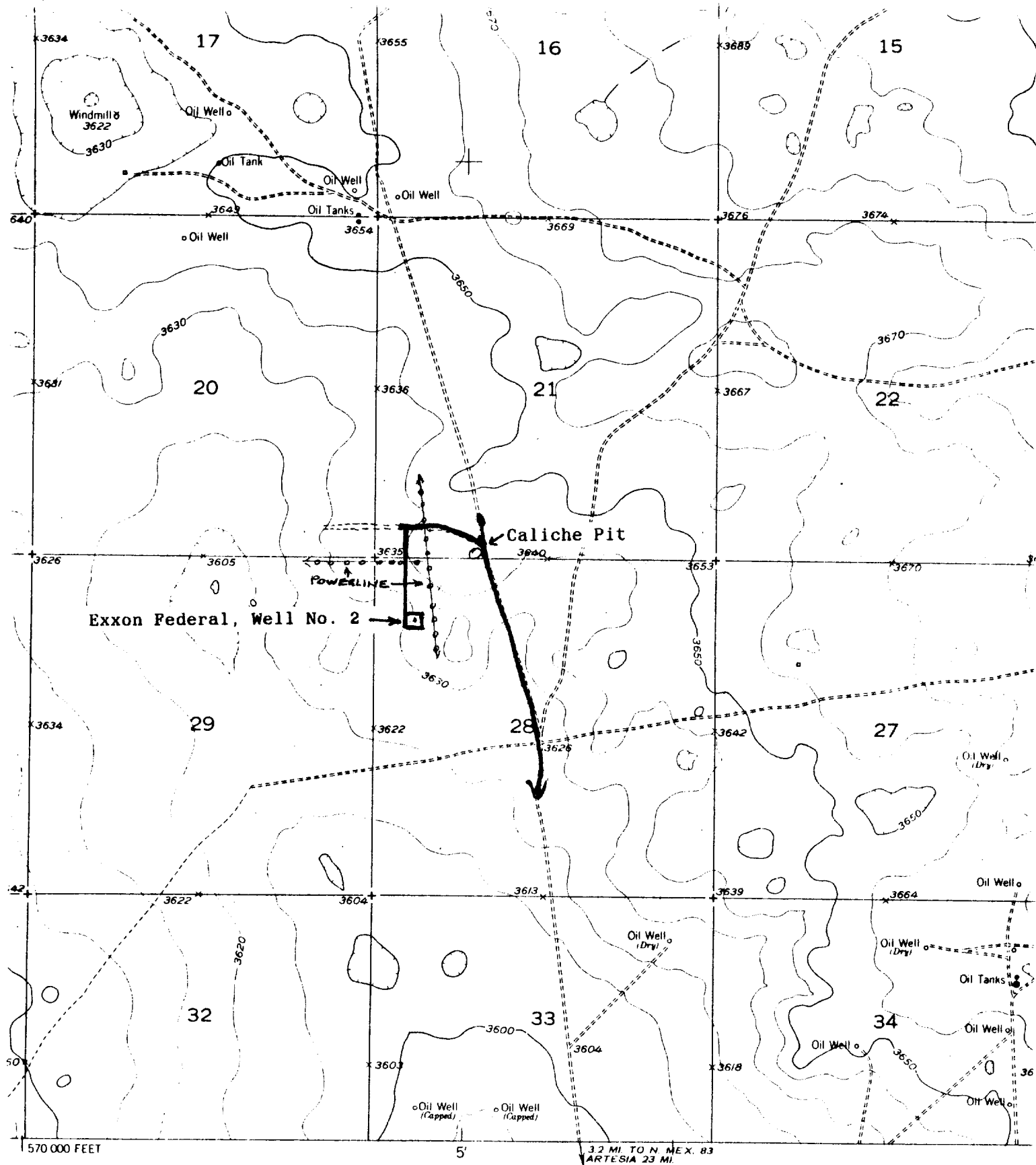
Gas: None expected.

Oil: Possible in the Penrose Sand at approximately 1882'.
4. Proposed Casing Program: See Form 9-331C.
5. Pressure Control Equipment: See Form 9331-C and Exhibit "D".
6. Mud Program: See Form 9-331C.
7. Auxiliary Equipment: Blowout Preventer, gas detector, kelly cock, pit level monitor, flow sensors and stabbing valve.
8. Testing, Logging and Coring Program:

Logging: CNL,CDL From surface casing at 350' to T. D.

Drill Stem Tests: none.

Coring: None.
9. No abnormal pressures or temperatures are anticipated.
10. Anticipated starting date: January 30, 1986.
Anticipated completion of drilling operations: Approximately 30 days.



urvey

aphs

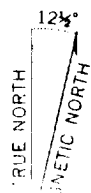


EXHIBIT "B"
 McCLELLAN OIL CORPORATION
 Exxon Federal, Well No. 2
 990' FNL & 660' FWL, Sec. 28-T16S-R29E
 Existing Access Roads: ———
 Proposed Access Roads: ———

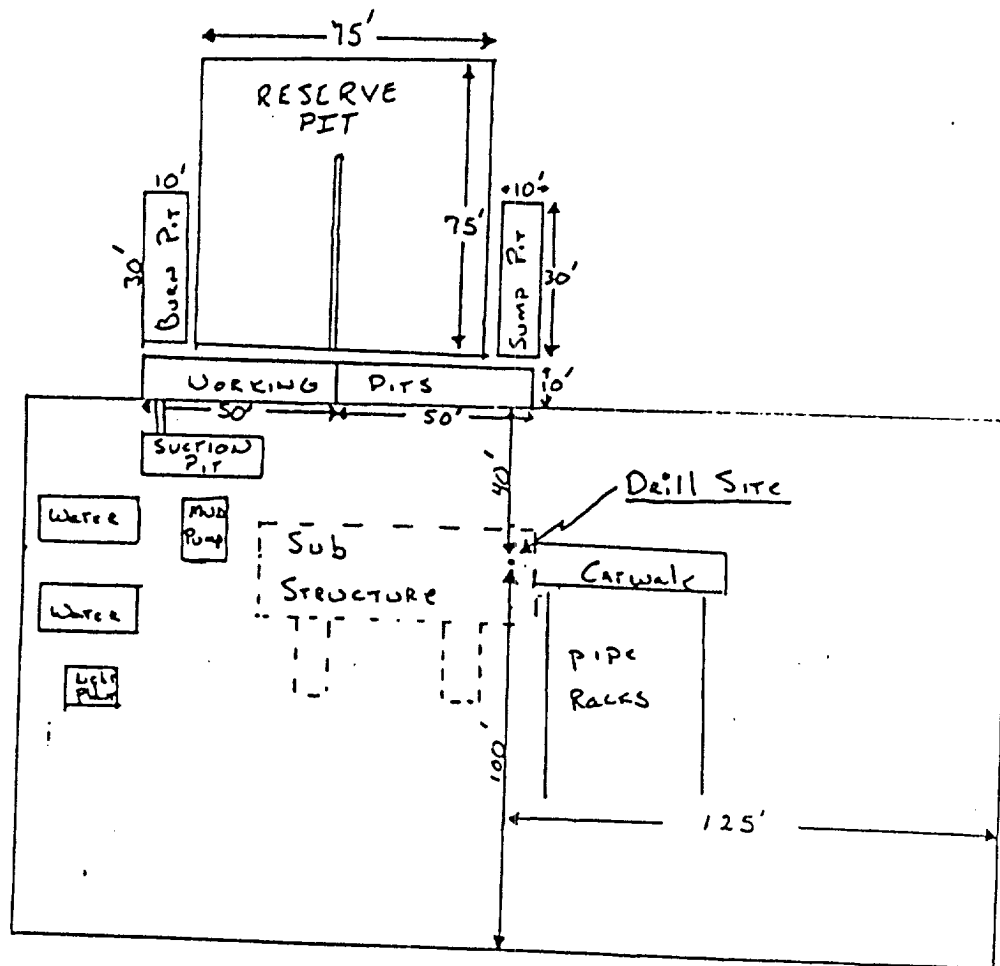
DATUM IS MEAN SEA LEVEL

McCLELLAN OIL CORPORATION
SUGGESTED PAD DIMENSIONS

Reserve Pits 4 ft. deep, plastic lined

Working pits 5 ft. deep

No cellar



Scale 1" = 50'

EXHIBIT "D"
McCLELLAN OIL CORPORATION
Exxon Federal, Well No.2
Rig Layout