

UNITED STATES
DEPARTMENT OF THE INTERIOR
BUREAU OF LAND MANAGEMENT

APPLICATION FOR PERMIT TO DRILL, DEEPEN, OR PLUG BACK

1a. TYPE OF WORK

DRILL ☒

DEEPEN ☐

PLUG BACK ☐

b. TYPE OF WELL

OIL
WELL ☒

GAS
WELL ☐

OTHER

SINGLE
ZONE ☐

MULTIPLE
ZONE ☐

2. NAME OF OPERATOR

Norwood Oil Company

3. ADDRESS OF OPERATOR

P. O. Drawer 1029, Malakoff, TX 75148

4. LOCATION OF WELL (Report location clearly and in accordance with any State requirements.)

At surface

330' FSL & 1650' FWL

At proposed prod. zone

Same

14. DISTANCE IN MILES AND DIRECTION FROM NEAREST TOWN OR POST OFFICE*

8 air miles Northwest of Loco Hills, NM

16. DISTANCE FROM PROPOSED*

LOCATION TO NEAREST
PROPERTY OR LEASE LINE, FT.
(Also to nearest drlg. unit line, if any)

330'

18. NO. OF ACRES IN LEASE

640

17. DISTANCE FROM PROPOSED LOCATION*

TO NEAREST WELL, DRILLING, COMPLETED,
OR APPLIED FOR, ON THIS LEASE, FT.

330'

19. PROPOSED DEPTH

1850'

17. NO. OF ACRES ASSIGNED
TO THIS WELL

40

20. ROTARY OR CABLE TOOLS

Rotary

21. ELEVATIONS (Show whether DF, RT, GR, etc.)

3648.0' G.L.

22. APPROX. DATE WORK WILL START*

February 10, 1986

23.

PROPOSED CASING AND CEMENTING PROGRAM

SIZE OF HOLE	SIZE OF CASING	WEIGHT PER FOOT	SETTING DEPTH	QUANTITY OF CEMENT
12 1/2"	8-5/8"	20.0#	300'	300 sks Class "C" w/ 2% CACL
7-7/8"	5 1/2"	14.0#	1850'	400 sks Class "C"

Well will be drilled to a total depth of approximately 1850' and all potential oil and gas zones will be evaluated. If commercial production is indicated, well will be selectively perforated and stimulated.

Attached are: 1. Well location and dedication plat
2. Supplemental drilling data
3. Surface Use Plan

Gas is not dedicated to a pipeline.

Posted API
NHT ID:
3-7-86

IN ABOVE SPACE DESCRIBE PROPOSED PROGRAM: If proposal is to deepen or plug back, give data on present productive zone and proposed new productive zone. If proposal is to drill or deepen directionally, give pertinent data on subsurface locations and measured and true vertical depths. Give blowout preventer program, if any.

24.

SIGNED

Seth M. Donald

TITLE Agent

DATE 2/1/86

(This space for Federal or State office use)

PERMIT NO.

APPROVAL DATE

APPROVED BY

TITLE

DATE

2-26-86

CONDITIONS OF APPROVAL, IF ANY:

APPROVAL SUBJECT TO
GENERAL REQUIREMENTS AND
SPECIAL STIPULATIONS

*See Instructions On Reverse Side

Title 18 U.S.C. Section 1001, makes it a crime for any person knowingly and willfully to make to any department or agency of the United States any false, fictitious or fraudulent statements or representations as to any matter within its jurisdiction.

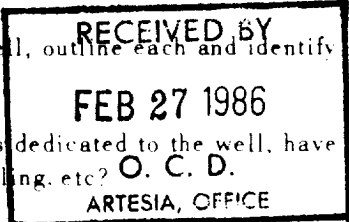
N MEXICO OIL CONSERVATION COMMISSION
WELL LOCATION AND ACREAGE DEDICATION PLAT

Form C-102
 Supersedes C-128
 Effective 1-1-85

All distances must be from the outer boundaries of the Section

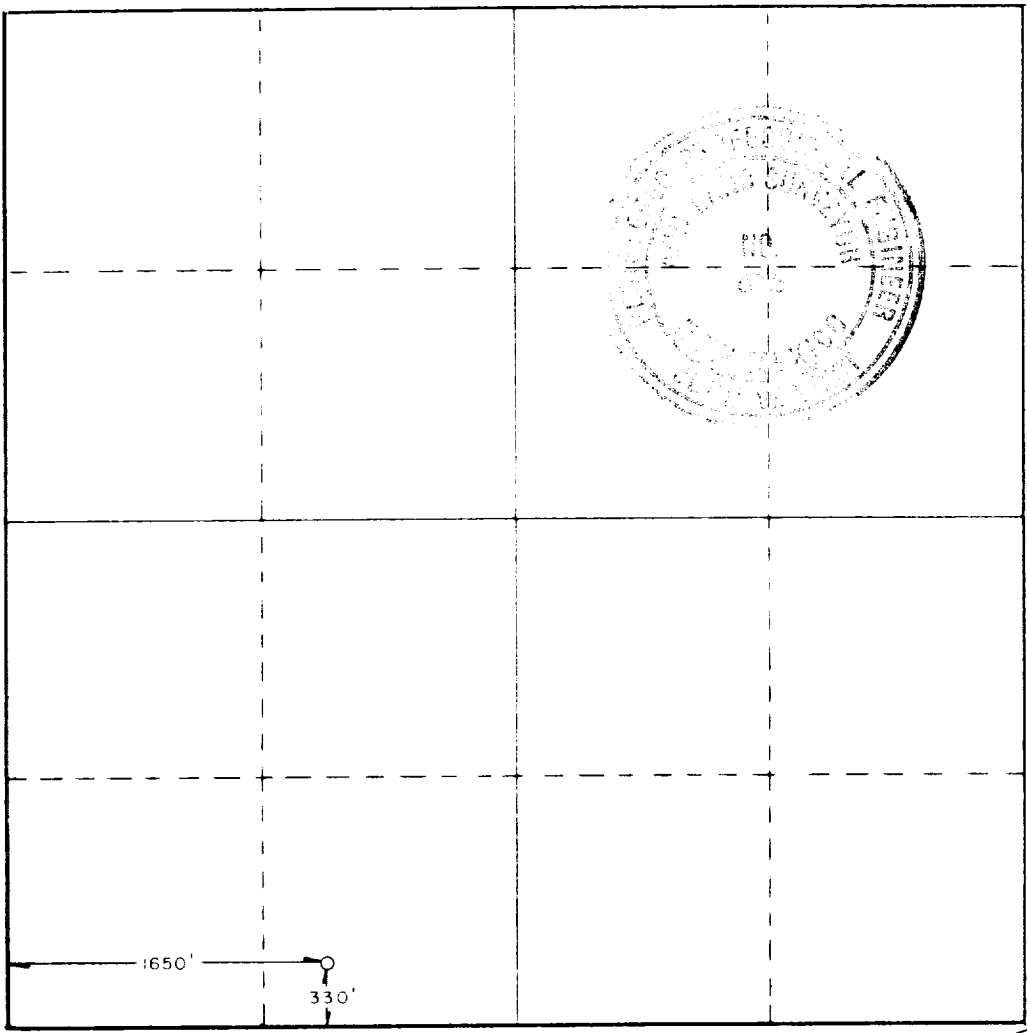
Lessor NORWOOD OIL COMPANY			Lessee ISLES FEDERAL		Well No. 7
Section N	Section 17	Township 16 SOUTH	Range 29 EAST	County EDDY	
Actual true location of Well: 1650 feet from the WEST line and 330 feet from the SOUTH line.					
Ground Level Elev. 3658.0'	Producing Formation Queen	Depth <i>High Sonoma Queen</i>		Dedicated Acreage 40	

1. Outline the acreage dedicated to the subject well by colored pencil or hachure marks on the plat below.
 2. If more than one lease is dedicated to the well, outline each and identify the ownership thereof (both as to working interest and royalty).
 3. If more than one lease of different ownership is dedicated to the well, have the interests of all owners been consolidated by communitization, unitization, force-pooling, etc? **O. C. D.**
- ☐ Yes ☐ No If answer is "yes," type of consolidation _____



If answer is "no," list the owners and tract descriptions which have actually been consolidated (Use reverse side of this form if necessary) _____

No allowable will be assigned to the well until all interests have been consolidated by communitization, unitization, forced-pooling, or otherwise or until a non-standard unit, eliminating such interests, has been approved by the Commission.



CERTIFICATION

I hereby certify that the information contained herein is true and complete to the best of my knowledge and belief.

Beth McDonald

Beth McDonald

Agent

Norwood Oil Company

2/1/86

I hereby certify that the well location shown on this plat was plotted from field notes of actual surveys made by me or under my supervision, and that the same is true and correct to the best of my knowledge and belief.

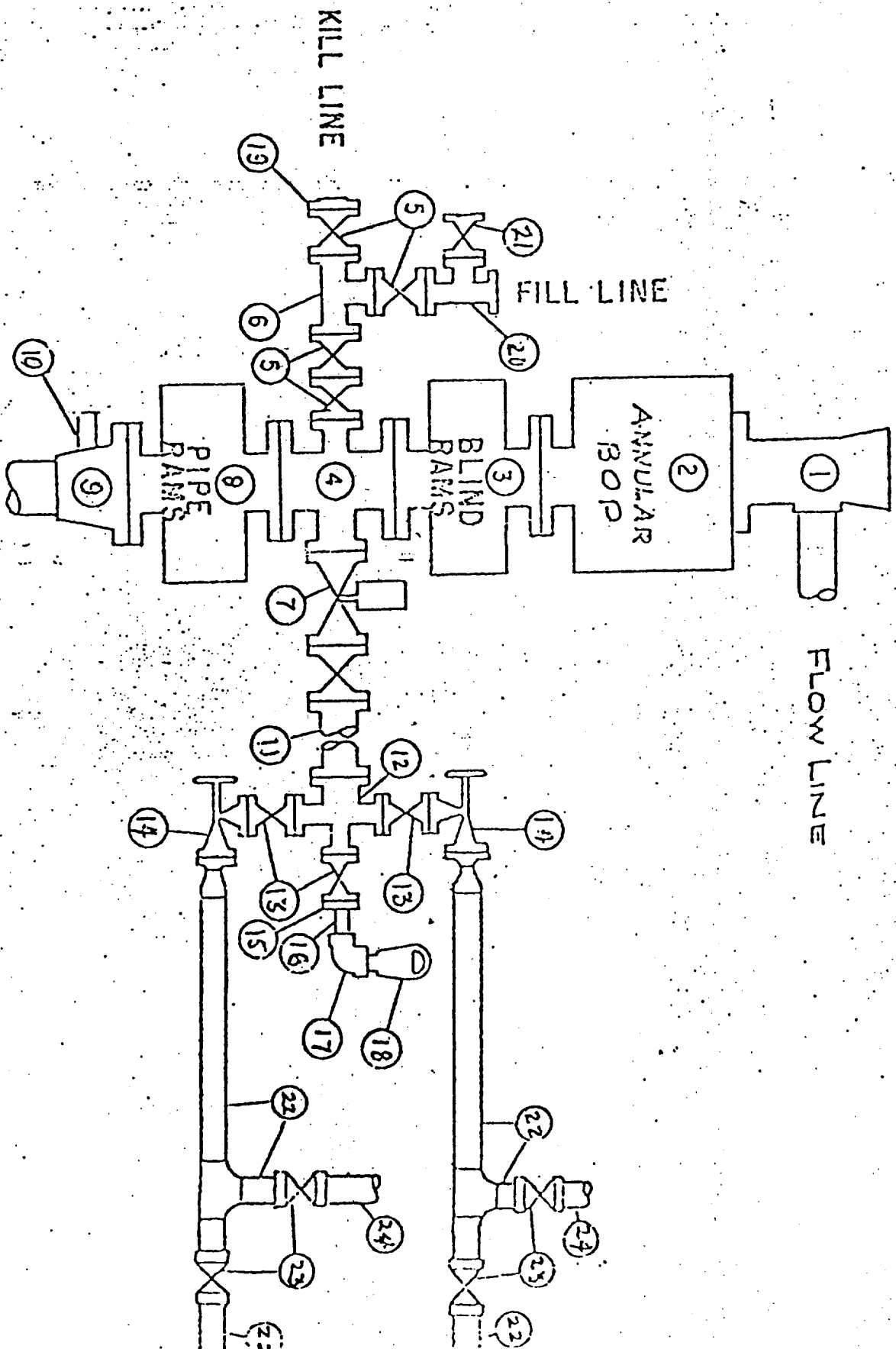
Date Surveyed
JANUARY 29, 1986

Registered Professional Engineer
 and/or Land Surveyor

Ronald J. Eidson

Certificate No. **JOHN W. WEST,** 676
RONALD J. EIDSON, 3239

BLOWOUT PREVENTER SPECIFICATION



SUPPLEMENTAL DRILLING DATA

Norwood Oil Company
WELL: Isles Federal #7
330' FSL & 1650' FWL Sec 17-T16S-R29E
Eddy County, New Mexico

SURFACE FORMATION: Quaternary

ESTIMATED TOPS OF GEOLOGICAL MARKERS:

Salt	320'
Yates	730'
Queen	1480'

ANTICIPATED POROSITY ZONES:

Water	None
Oil	1400'-1850'

CASING DESIGN:

<u>Hole Size</u>	<u>Casing</u>	<u>Interval</u>	<u>Weight</u>	<u>Class</u>	<u>Joint</u>	<u>Condition</u>
12 1/4"	8 5/8"	0 - 350'	20.0#	J-55	ST&C	New
7 7/8"	5 1/2"	0 - 1850'	14.0#	J-55	ST&C	New

SURFACE CONTROL EQUIPMENT: Shaeffer 10" Series 90 Blow-out-preventer with blind rams.

CIRCULATING MEDIUM: 0 - 350' Fresh Water; 350' - TD Brine Water

AUXILIARY EQUIPMENT: Drill string safety valve.

TESTING, LOGGING AND CORING PROGRAMS: Gamma Ray Neutron Log from 0 - TD.

ABNORMAL PRESSURES, TEMPERATURES OR GASES: None anticipated.

ANTICIPATED DATES: It is planned that operations will commence about February 10, 1986, or immediately upon approval of this application. Duration of drilling and completion operations should be 20 to 40 days.

DESIGNATION OF OPERATOR

The undersigned is, on the records of the Bureau of Land Management, holder of lease

DISTRICT LAND OFFICE: Santa Fe
SERIAL NO.: LC 046119-A

and hereby designates

NAME: Bill Jones Oil Company
ADDRESS: P. O. Box 645, Odessa, Texas 79760

as his operator and local agent, with full authority to act in his behalf in complying with the terms of the lease and regulations applicable thereto and on whom the supervisor or his representative may serve written or oral instructions in securing compliance with the Operating Regulations with respect to (describe acreage to which this designation is applicable):

Township 16 South, Range 29 East, N.M.P.M.
Section 17 - S 1/2
Section 20 - N 1/2
containing 640 acres, more or less, Eddy
County, New Mexico.

It is understood that this designation of operator does not relieve the lessee of responsibility for compliance with the terms of the lease and the Operating Regulations. It is also understood that this designation of operator does not constitute an assignment of any interest in the lease.

In case of default on the part of the designated operator, the lessee will make full and prompt compliance with all regulations, lease terms, or orders of the Secretary of the Interior or his representative.

The lessee agrees promptly to notify the supervisor of any change in the designated operator.

SUN OIL COMPANY

By: Will A. White *WAW*

(Signature of lessee)

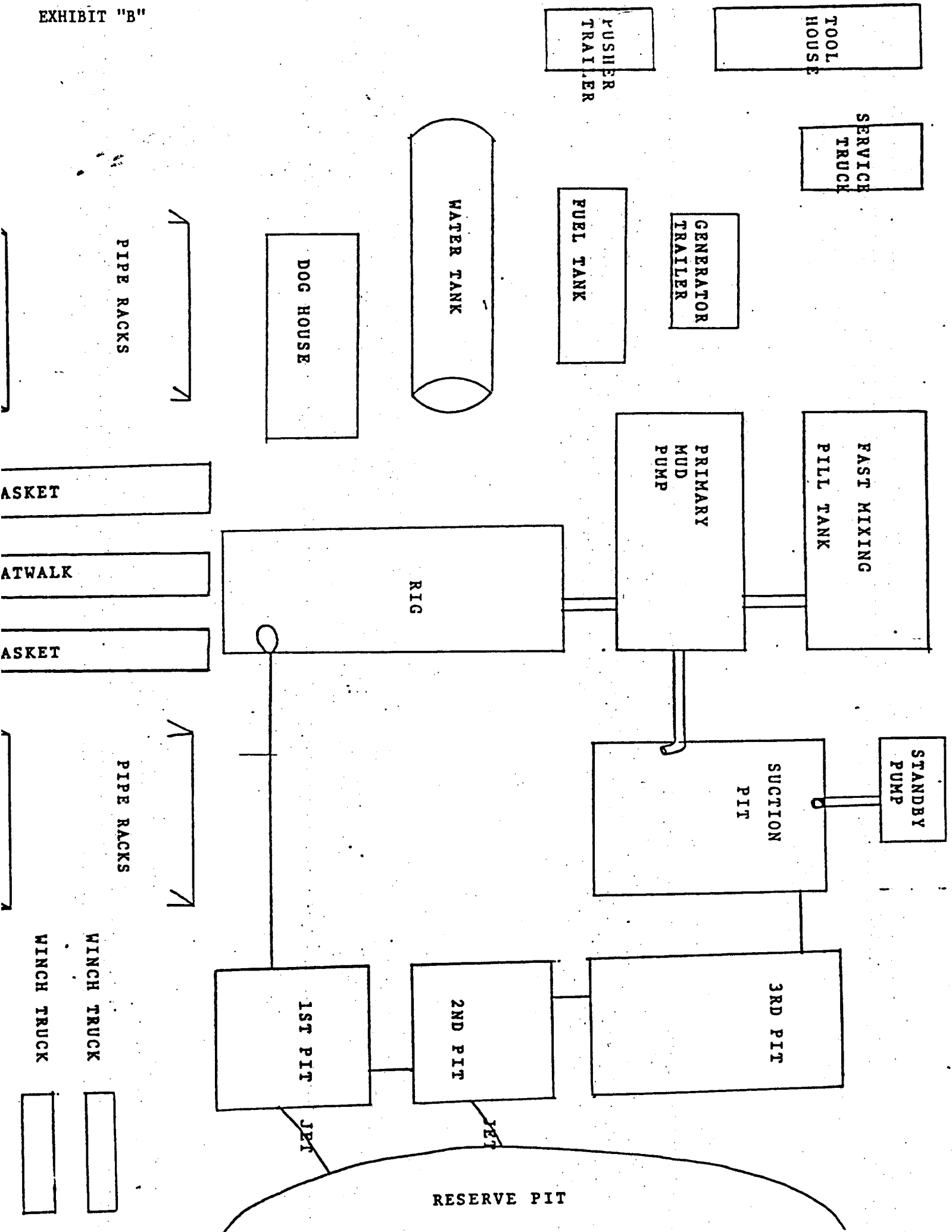
*Agent and Attorney-in-Fact

February 17, 1971
(Date)

P. O. Box 2880, Dallas, Texas 75221
(Address)

U.S. GOVERNMENT PRINTING OFFICE: 1964-O-728-364

*See New Mexico Land Office Serial No. NM-0558400 for authority of Agent and Attorney-in-Fact.



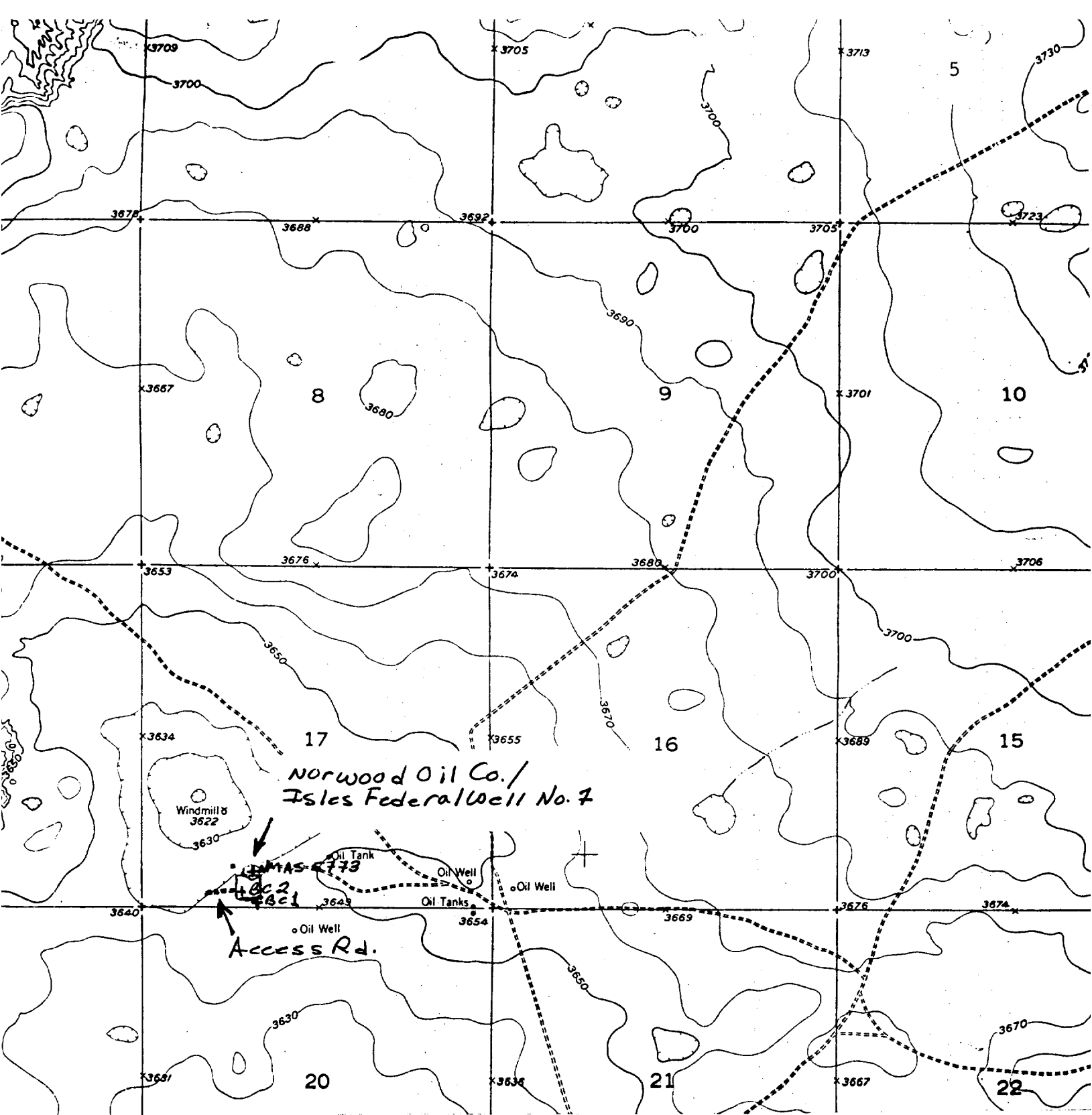


Fig. 1. USGS BASIN WELL QUADRANGLE, 7.5 Minute Series, 1:24,000, 1953, showing NORWOOD OIL COMPANY's proposed Isles Federal Well No. 7, 1650 FWL, 330 FSL, and access road, Section 17, T16S, R29E, NMPM, Eddy County, New Mexico. Location is shown vis à vis NMA 5773 and the two instances of burned caliche (BC).