

EXICO OIL CONSERVATION COMMISS.
WELL LOCATION AND ACREAGE DEDICATION PLAT

Form O-1-1
Supersedes O-1-28
Effective 1-1-65

All distances must be from the outer boundaries of the Section

Operator RED LAKE OIL CO.		Lease WELCH STATE		Acres 1	
Well Letter J	Section 28	Township 17 SOUTH	Range 28 EAST	County EDDY	
Actual Prostate Location of Well:					
1650 feet from the SOUTH line and		1650 feet from the EAST line		Dedicated Acreage 40	
Ground Level Elev. 3685.0'	Producing Formation Luren Ruers	Pool Urd. E. Aquifer - Y-SR		Area 40	

1. Outline the acreage dedicated to the subject well by colored pencil or hatchure marks on the plat below.

2. If more than one lease is dedicated to the well, outline each and identify the ownership thereof (both as to working interest and royalty).

3. If more than one lease of different ownership is dedicated to the well, have the interests of all owners been consolidated by communitization, unitization, force-pooling, etc?

RECEIVED BY

DEC -3 1986

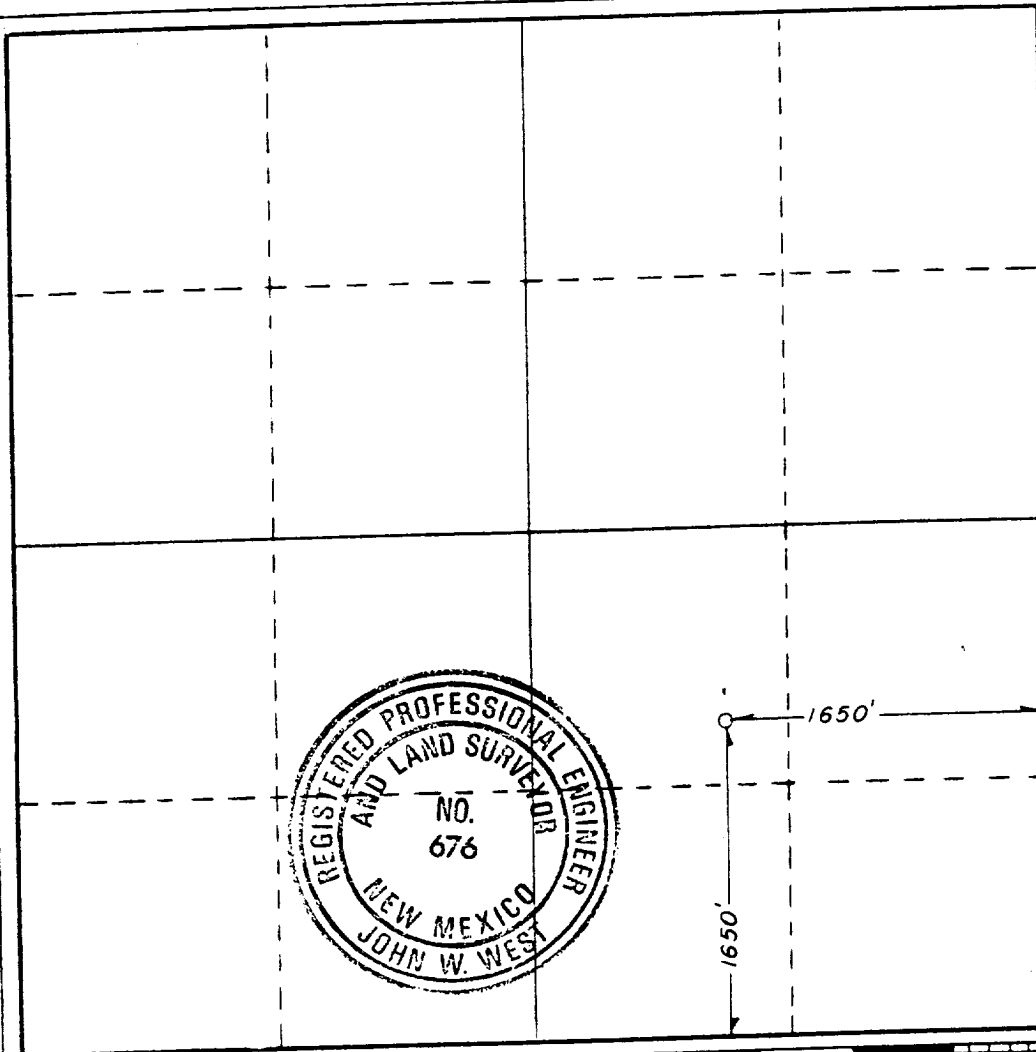
O. C. D.

ARTESIA, OFFICE

☐ Yes ☐ No If answer is "yes," type of consolidation _____

If answer is "no," list the owners and tract descriptions which have actually been consolidated. (Use reverse side of this form if necessary.) _____

No allowable will be assigned to the well until all interests have been consolidated (by communitization, unitization, forced-pooling, or otherwise) or until a non-standard unit, eliminating such interests, has been approved by the Commission.



CERTIFICATION

I hereby certify that the information contained herein is true and complete to the best of my knowledge and belief.

Van P. Welch

Name

Position

Company

Date

I hereby certify that the well location shown on this plat was plotted from field notes of actual surveys made by me or under my supervision, and that the same is true and correct to the best of my knowledge and belief.

Date Surveyed

3-28-84

Registered Professional Engineer and/or Land Surveyor

John W. West

Certificate No. **JOHN W. WEST,**

576

RONALD J. EIDSON,

3239

330 660 990 1320 1650 1980 2310 2640 2970 3300 3630 3960 4290 4620 4950 5280 5610 5940 6270 6600