

MEXICO OIL CONSERVATION COMMISSION
WELL LOCATION AND ACREAGE DEDICATION PLAT

Form C-102
 Supersedes C-128
 Effective 4-65

All distances must be from the outer boundaries of the Section

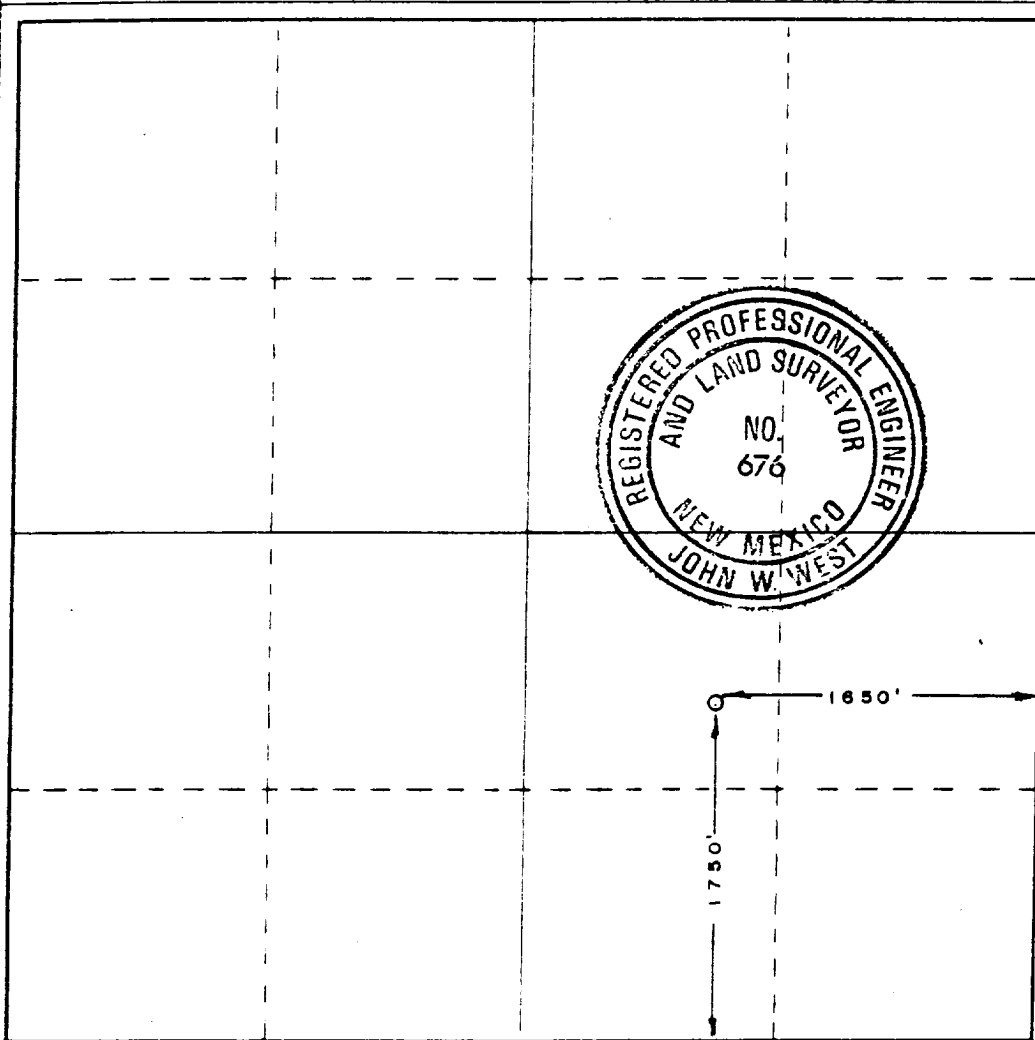
Lessor RED LAKE OIL COMPANY		Lease WELCH STATE		Well No. 1
Section Letter 1	Section 36	Township 17 SOUTH	Range 18 EAST	County EDDY
Actual Well Location of Well				
feet from the SOUTH line and		1650		
feet from the EAST line				
Ground Level Elev. 3684.0	Producing Formation Sutton Pools	Pool Unit	Dedicated Acreage 40	

1. Outline the acreage dedicated to the subject well by colored pencil or hachure marks on the plat below.
2. If more than one lease is dedicated to the well, outline each and identify the ownership thereof (both as to working interest and royalty).
3. If more than one lease of different ownership is dedicated to the well, have the interests of all owners been consolidated by communitization, unitization, force-pooling, etc?

☐ Yes ☐ No If answer is "yes," type of consolidation _____

If answer is "no," list the owners and tract descriptions which have actually been consolidated. (Use reverse side of this form if necessary.) _____

No allowable will be assigned to the well until all interests have been consolidated (by communitization, unitization forced-pooling, or otherwise) or until a non-standard unit, eliminating such interests, has been approved by the Commission.



CERTIFICATION

I hereby certify that the information contained herein is true and complete to the best of my knowledge and belief.

Name	Harold Welch
Position	President
Company	Red Lake Oil Co.
Date	30 Dec '86

I hereby certify that the well location shown on this plat was plotted from field notes of actual surveys made by me or under my supervision, and that the same is true and correct to the best of my knowledge and belief.

Date Surveyed	DECEMBER 30, 1986
Registered Professional Engineer and Land Surveyor	John W. West
Certificate No.	JOHN W. WEST, 676
	RONALD J. EIDSON, 3239