

UNITED STATES
DEPARTMENT OF THE INTERIOR
BUREAU OF LAND MANAGEMENT

30-015-36035
RECEIVED

APPLICATION FOR PERMIT TO DRILL, DEEPEN, OR PLUG BACK

1a. TYPE OF WORK

DRILL ☒

DEEPEN ☐

PLUG BACK ☐

b. TYPE OF WELL

OIL
WELL ☒

GAS
WELL ☐

OTHER

SINGLE
ZONE ☐

MULTIPLE
ZONE ☐

2. NAME OF OPERATOR

Beach Exploration, Inc.

3. ADDRESS OF OPERATOR

800 N Marienfeld Suite 200 Midland, Texas 79701

4. LOCATION OF WELL (Report location clearly and in accordance with any State requirements.)

At surface

2310' FNL and 1650' FEL

At proposed prod. zone

(Unit G)

(SW/4 NE/4)

O. C. D.

ARTESIA, OFFICE

2310' FNL and 1650' FEL

14. DISTANCE IN MILES AND DIRECTION FROM NEAREST TOWN OR POST OFFICE*

18 Miles East-Northeast of Artesia, New Mexico

15. DISTANCE FROM PROPOSED*

LOCATION TO NEAREST

PROPERTY OR LEASE LINE, FT.

(Also to nearest drlg. unit line, if any)

330'

16. NO. OF ACRES IN LEASE

240

17. NO. OF ACRES ASSIGNED

TO THIS WELL

40

18. DISTANCE FROM PROPOSED LOCATION*

TO NEAREST WELL, DRILLING, COMPLETED,
OR APPLIED FOR, ON THIS LEASE, FT.

1310'

19. PROPOSED DEPTH

1800'

20. ROTARY OR CABLE TOOLS

Rotary

21. ELEVATIONS (Show whether DF, RT, GR, etc.)

3641.4 GL

22. APPROX. DATE WORK WILL START*

December 15, 1988

23.

PROPOSED CASING AND CEMENTING PROGRAM

SIZE OF HOLE	SIZE OF CASING	WEIGHT PER FOOT	SETTING DEPTH	QUANTITY OF CEMENT
11" 12 1/4"	8 5/8"	24#	300'	Sufficient to Circulate
7 7/8"	4 1/2"	10.5#	1800'	500 Sxs

Attachments: Well location and dedication plat
Drilling Data
Surface Use Plan
Archaeological Survey

IN ABOVE SPACE DESCRIBE PROPOSED PROGRAM: If proposal is to deepen or plug back, give data on present productive zone and proposed new productive zone. If proposal is to drill or deepen directionally, give pertinent data on subsurface locations and measured and true vertical depths. Give blowout preventer program, if any.

24.

SIGNED

Amara Shatm

TITLE

Production

DATE 11-3-88

(This space for Federal or State office use)

PERMIT NO.

APPROVAL DATE

APPROVED BY

David Adams

TITLE

CARLETON RESOURCE ASS.

DATE

12. 7 88

CONDITIONS OF APPROVAL, IF ANY:

APPROVAL SUBJECT TO
GENERAL REQUIREMENTS AND
SPECIAL STIPULATIONS

ATTACHED

*See Instructions On Reverse Side

NEW MEXICO OIL CONSERVATION COMMISSION
WELL LOCATION AND ACREAGE DEDICATION PLAT

Form O-1-1
Supersedes O-1-1
Effective 1-1-65

All distances must be from the outer boundaries of the Section

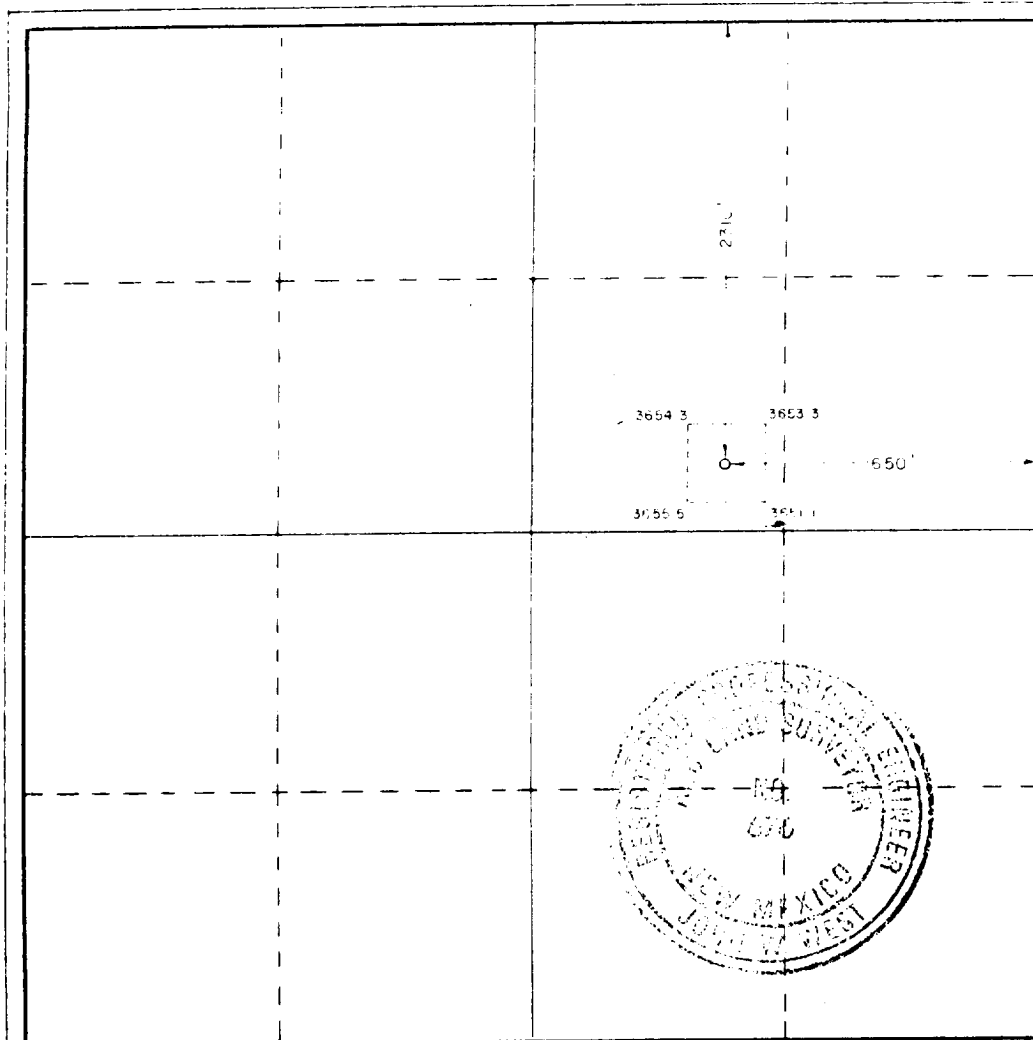
Operator Beach Exploration Co.		Lease Exxon Federal "A"		Well No. 2
Section 10	Township 16 South	Range 29 East	County Hidalgo	
Approximate location of well: 2410 feet from the north line and 1650 feet from the east line				
Ground Level Elev. 1650	Producing Formation Queen	Pool High Lonesome	Section Acres 40	

1. Outline the acreage dedicated to the subject well by colored pencil or hatchure marks on the plat below.
2. If more than one lease is dedicated to the well, outline each and identify the ownership thereof (both as to working interest and royalty).
3. If more than one lease of different ownership is dedicated to the well, have the interests of all owners been consolidated by communitization, unitization, force-pooling, etc?

☐ Yes ☐ No If answer is "yes," type of consolidation _____

If answer is "no," list the owners and tract descriptions which have actually been consolidated (use reverse side of this form if necessary.) _____

No allowable will be assigned to the well until all interests have been consolidated (by communitization, unitization, forced-pooling, or otherwise) or until a non-standard unit, eliminating such interests, has been approved by the Commission.



CERTIFICATION

I hereby certify that the information contained herein is true and complete to the best of my knowledge and belief

Barbara Watson

Barbara Watson

Production

Beach Exploration,

November 3, 1988

I hereby certify that the well location shown on this plat was plotted from field notes of actual surveys made by me or under my supervision, and that the same is true and correct to the best of my knowledge and belief

Date Surveyed

June 17, 1988

Registered Professional Engineer
in State of New Mexico

John W. West

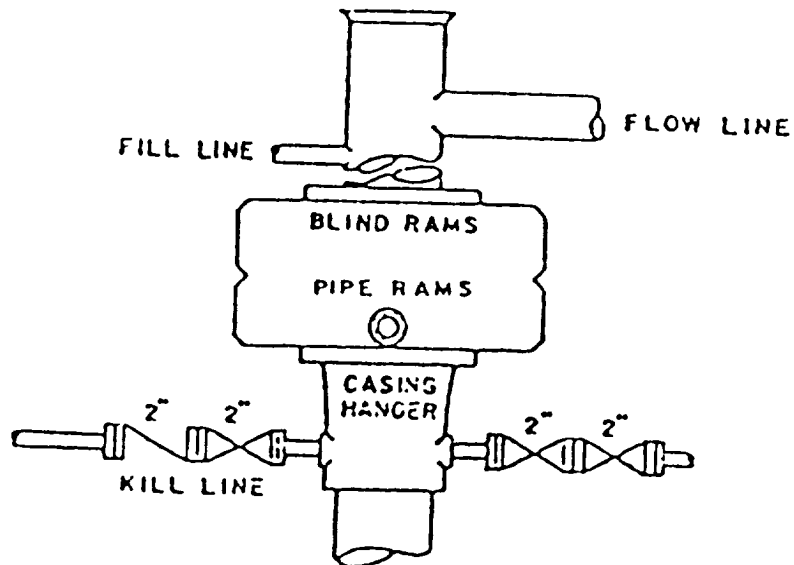
Certificate No. JOHN W. WEST, 676

RONALD J. EIDSON, 3239

96560

BLOWOUT PREVENTER ARRANGEMENT

Beach Exploration, Inc.
Well #2 Exxon Federal A
SW 1/4 NE 1/4 Sec. 18-16S-29E



BEACH EXPLORATION, INC.
WELL NO. 2A EXXON FEDERAL
SW1/4 NE1/4 of SEC.18, T16S, R29E
EDDY COUNTY, NEW MEXICO

1. Surface Formation: Sandy soils of Quaternary Age.
2. Estimated Tops of Geologic Markers:

Andydrite	250'	Seven Rivers	880'
Salt	280'	Queen	1470'
Base Salt	610'	Penrose	1700'
Yates	720'	Grayburg	1800'

3. Anticipated Porosity Zones:

Water: Above 150'
Oil: Seven Rivers, Queen, Penrose

4. Casing Design:

Size	Interval	Weight	Grade	Joints
8 5/8"	0-310'	23.0#	K-55	STC
4 1/2"	0-1800'	10.5#	K-55	STC

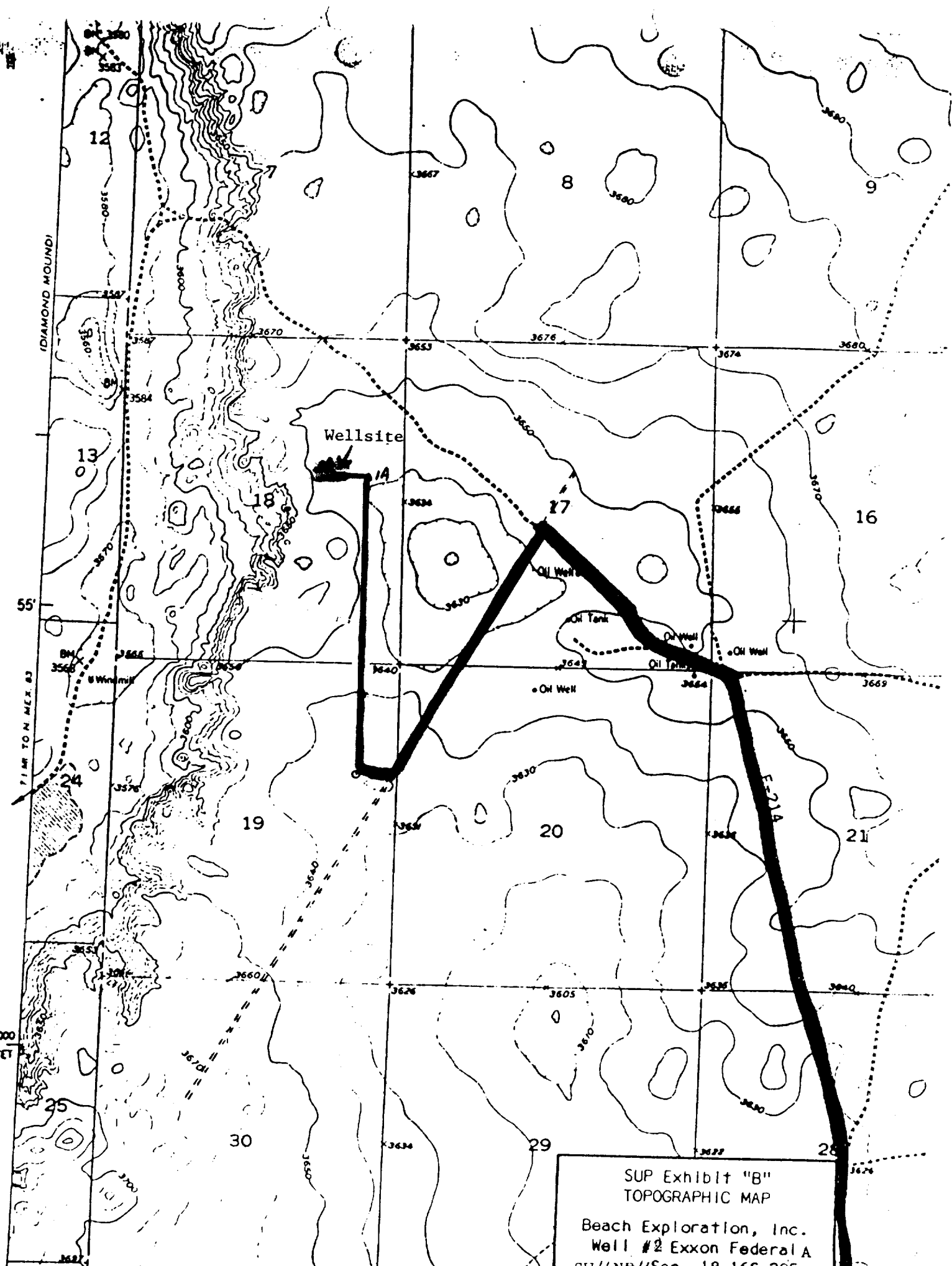
5. Pressure Control Equipment: Double Ram-Type Preventer
6. Circulating Medium:

0 - 300' Fresh water mud with gel or lime as
needed for viscosity control.

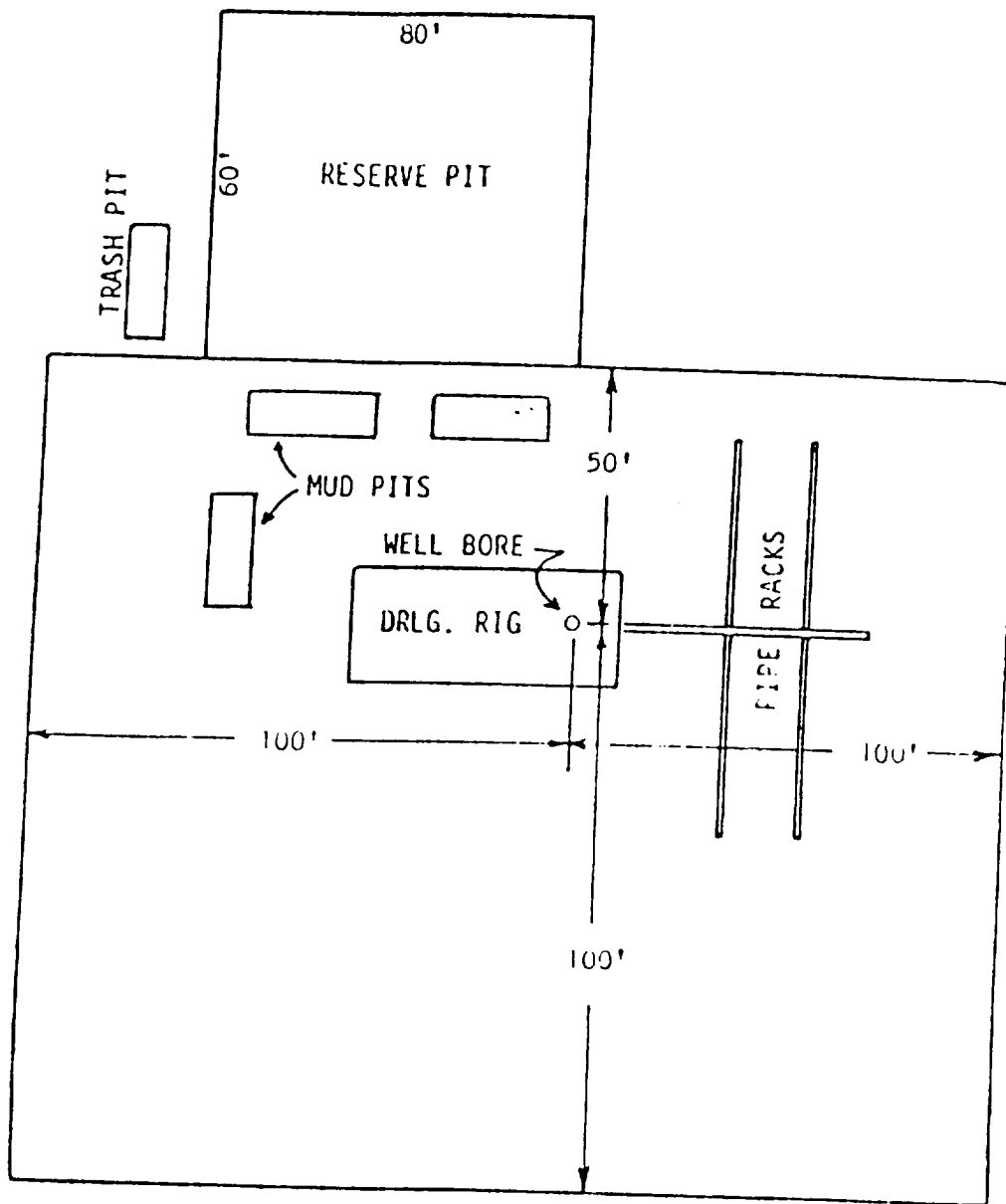
300'- 1500' Brine Water

1500'- 1800' Salt water mud, conditioned as
necessary for control of viscosity
and water loss.

7. Auxiliary Equipment: Drill string safety valve.
8. Testing, logging and coring program: No coring or DST's
are planned. Electric logs will include a CNL-FDC w/GR.
9. Abnormal pressure, Temperatures or gases: None Anticipated
10. Anticipated Starting Date: Approximately December 15, 1988



SUP Exhibit "B"
TOPOGRAPHIC MAP
Beach Exploration, Inc.
Well #2 Exxon Federal A
SUT/ANR/1/Sec 18-165 205



SUP Exhibit "D"
 SKETCH OF WELL PAD
 Beach Exploration, Inc.
 Well # 2 Exxon Federal A
 SW/4 NE/4Sec. 18-16S-29E