

30-015-29637

Submit to Appropriate
District Office
State Lease - 6 copies
Fee Lease - 5 copies

State of New Mexico
Energy, Minerals and Natural Resources Department

Form C-101
Revised 1-1-89

OIL CONSERVATION DIVISION

P.O. Box 2088
Santa Fe, New Mexico 87504-2088

DISTRICT I
P.O. Box 1980, Hobbs, NM 88240

DISTRICT II
P.O. Drawer DD, Artesia, NM 88210

DISTRICT III
1000 Rio Brazos Rd., Aztec, NM 87410

API NO. (assigned by OCD on New Wells)

30-015

5. Indicate Type of Lease

STATE ☒ FEE ☐

6. State Oil & Gas Lease No.

NMM184634

APPLICATION FOR PERMIT TO DRILL, DEEPEN, OR PLUG BACK

1a. Type of Work:

DRILL ☒RE-ENTER ☐DEEPEN ☐PLUG BACK ☐

b. Type of Well:

OIL WELL ☒GAS WELL ☐OTHER ☐SINGLE ZONE ☐MULTIPLE ZONE ☐

7. Lease Name or Unit Agreement Name

Red Lake Unit

8. Well No.

28

3. Address of Operator

800 N. Marienfeld Ste. 200 Midland, Texas 79701

9. Pool name or Wildcat

Red Lake, (Queen Grayburg) East

4. Well Location

Unit Letter N : 1200 Feet From The South Line and 2600 Feet From The West Line

Section 25 Township 16S Range 28E NMPM Eddy County

10. Proposed Depth

1900'

11. Formation

Queen

12. Rotary or C.T.

Rotary

13. Elevations (Show whether DF, RT, GR, etc.)

3604' GL

14. Kind & Status Plug. Bond

Blanket

15. Drilling Contractor

L & M

16. Approx. Date Work will start

17. PROPOSED CASING AND CEMENT PROGRAM

SIZE OF HOLE	SIZE OF CASING	WEIGHT PER FOOT	SETTING DEPTH	SACKS OF CEMENT	EST. TOP
12 1/4"	8 5/8"	24#	250-280' 136A	Sufficient to Circulate	
7 7/8"	4 1/2"	10.5#	1900'	150 Sxs	

APPROVAL VALID FOR 365 DAYS
PERMIT EXPIRES 6-4-98
UNLESS DRILLING UNDERWAY

Post ID-1
6-13-97
New-loc + API

IN ABOVE SPACE DESCRIBE PROPOSED PROGRAM: IF PROPOSAL IS TO DEEPEN OR PLUG BACK, GIVE DATA ON PRESENT PRODUCTIVE ZONE AND PROPOSED NEW PRODUCTIVE ZONE. GIVE BLOWOUT PREVENTER PROGRAM, IF ANY.

I hereby certify that the information above is true and complete to the best of my knowledge and belief.

SIGNATURE Barbara Watson TITLE Production DATE 6-2-97

TYPE OR PRINT NAME Barbara Watson 915/683-6226 TELEPHONE NO.

(This space for State Use)

APPROVED BY Jim W. Gunn TITLE District Supervisor DATE 6-4-97

CONDITIONS OF APPROVAL, IF ANY:

18 Hours WOC on 8 5/8" casing. BOA

TEAP5 - 210-111

ALUQA
2010
2010

DISTRICT I
P.O. Box 1980, Hobbs, NM 88241-1980

State of New Mexico

Energy, Minerals and Natural Resources Department

Form C-102
Revised February 10, 1994
Submit to Appropriate District Office
State Lease - 4 Copies
Fee Lease - 3 Copies

DISTRICT II
P.O. Drawer DD, Artesia, NM 88211-0719

DISTRICT III
1000 Rio Brazos Rd., Aztec, NM 87410

DISTRICT IV
P.O. BOX 2088, SANTA FE, N.M. 87504-2088

OIL CONSERVATION DIVISION

P.O. Box 2088
Santa Fe, New Mexico 87504-2088

☐ AMENDED REPORT

WELL LOCATION AND ACREAGE DEDICATION PLAT

API Number 30-015	Pool Code 51340	Pool Name Red Lake, (Queen Grayburg) East
Property Code 1923	Property Name RED LAKE UNIT	Well Number 28
OGRID No. 1903	Operator Name BEACH EXPLORATION, INC.	Elevation 3604

Surface Location

UL or lot No.	Section	Township	Range	Lot Idn	Feet from the	North/South line	Feet from the	East/West line	County
N	25	16 S	28 E		1200	SOUTH	2600	WEST	EDDY

Bottom Hole Location If Different From Surface

UL or lot No.	Section	Township	Range	Lot Idn	Feet from the	North/South line	Feet from the	East/West line	County
Dedicated Acres 40	Joint or Infill	Consolidation Code	Order No.						

NO ALLOWABLE WILL BE ASSIGNED TO THIS COMPLETION UNTIL ALL INTERESTS HAVE BEEN CONSOLIDATED
OR A NON-STANDARD UNIT HAS BEEN APPROVED BY THE DIVISION

	OPERATOR CERTIFICATION I hereby certify that the information contained herein is true and complete to the best of my knowledge and belief. Signature Barbara Watson Printed Name Production Title 6-2-97 Date
	SURVEYOR CERTIFICATION I hereby certify that the well location shown on this plat was plotted from field notes of actual surveys made by me or under my supervision, and that the same is true and correct to the best of my belief. MAY 21, 1997 Date Surveyed DMCC Signature & Seal of Professional Surveyor RONALD W. EDSON Certification No. JOHN W. EDSON 676 3235 12641

DISTRICT I
P.O. Box 1980, Hobbs, NM 88241-1980

State of New Mexico
Energy, Minerals and Natural Resources Department

Form C-102
Revised February 10, 1994
Submit to Appropriate District Office
State Lease - 4 Copies
Fee Lease - 3 Copies

DISTRICT II
P.O. Drawer DD, Artesia, NM 88211-0719

DISTRICT III
1000 Rio Brazos Rd., Aztec, NM 87410

DISTRICT IV
P.O. BOX 2088, SANTA FE, N.M. 87504-2088

OIL CONSERVATION DIVISION
P.O. Box 2088

Santa Fe, New Mexico 87504-2088

☐ AMENDED REPORT

WELL LOCATION AND ACREAGE DEDICATION PLAT

API Number	Pool Code	Pool Name
30-015	51340	Red Lake, (Queen Grayburg) East
Property Code	Property Name	Well Number
1923	RED LAKE UNIT	28
GRID No.	Operator Name	Elevation
1903	BEACH EXPLORATION, INC.	3604

Surface Location

UL or lot No.	Section	Township	Range	Lot Idn	Feet from the	North/South line	Feet from the	East/West line	County
N	25	16 S	28 E		1200	SOUTH	2600	WEST	EDDY

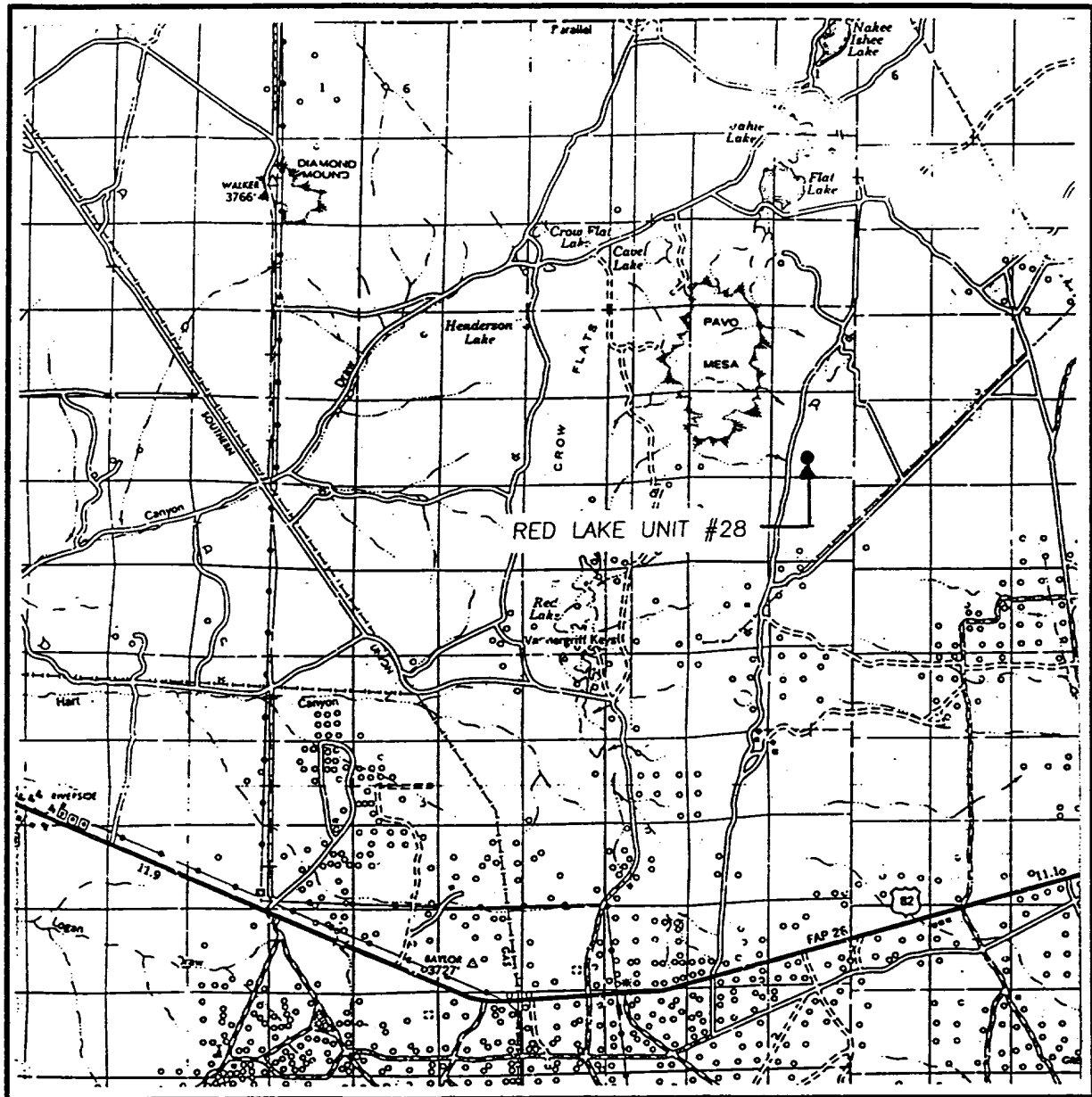
Bottom Hole Location If Different From Surface

UL or lot No.	Section	Township	Range	Lot Idn	Feet from the	North/South line	Feet from the	East/West line	County
Dedicated Acres	Joint or Infill	Consolidation Code	Order No.						
40									

NO ALLOWABLE WILL BE ASSIGNED TO THIS COMPLETION UNTIL ALL INTERESTS HAVE BEEN CONSOLIDATED
OR A NON-STANDARD UNIT HAS BEEN APPROVED BY THE DIVISION

	<p>OPERATOR CERTIFICATION</p> <p>I hereby certify that the information contained herein is true and complete to the best of my knowledge and belief.</p> <p><i>Barbara Watson</i> Signature</p> <p>Barbara Watson Printed Name</p> <p>Production Title</p> <p>6-2-97 Date</p> <p>SURVEYOR CERTIFICATION</p> <p>I hereby certify that the well location shown on this plat was plotted from field notes of actual surveys made by me or under my supervision, and that the same is true and correct to the best of my belief.</p> <p>MAY 21, 1997</p> <p>Date Surveyed DMCC</p> <p>Signature & Seal of Professional Surveyor</p> <p>97-11-0868</p> <p>Certificate No. JOHN W. WEST 676 RONALD J. EIDSON 3239 GARY EIDSON 12641</p>
--	---

VICINITY MAP



SCALE: 1" = 2 MILES

SEC. 25 TWP. 16-S RGE. 28-E

SURVEY N.M.P.M.

COUNTY EDDY

DESCRIPTION 1200' FSL & 2600' FWL

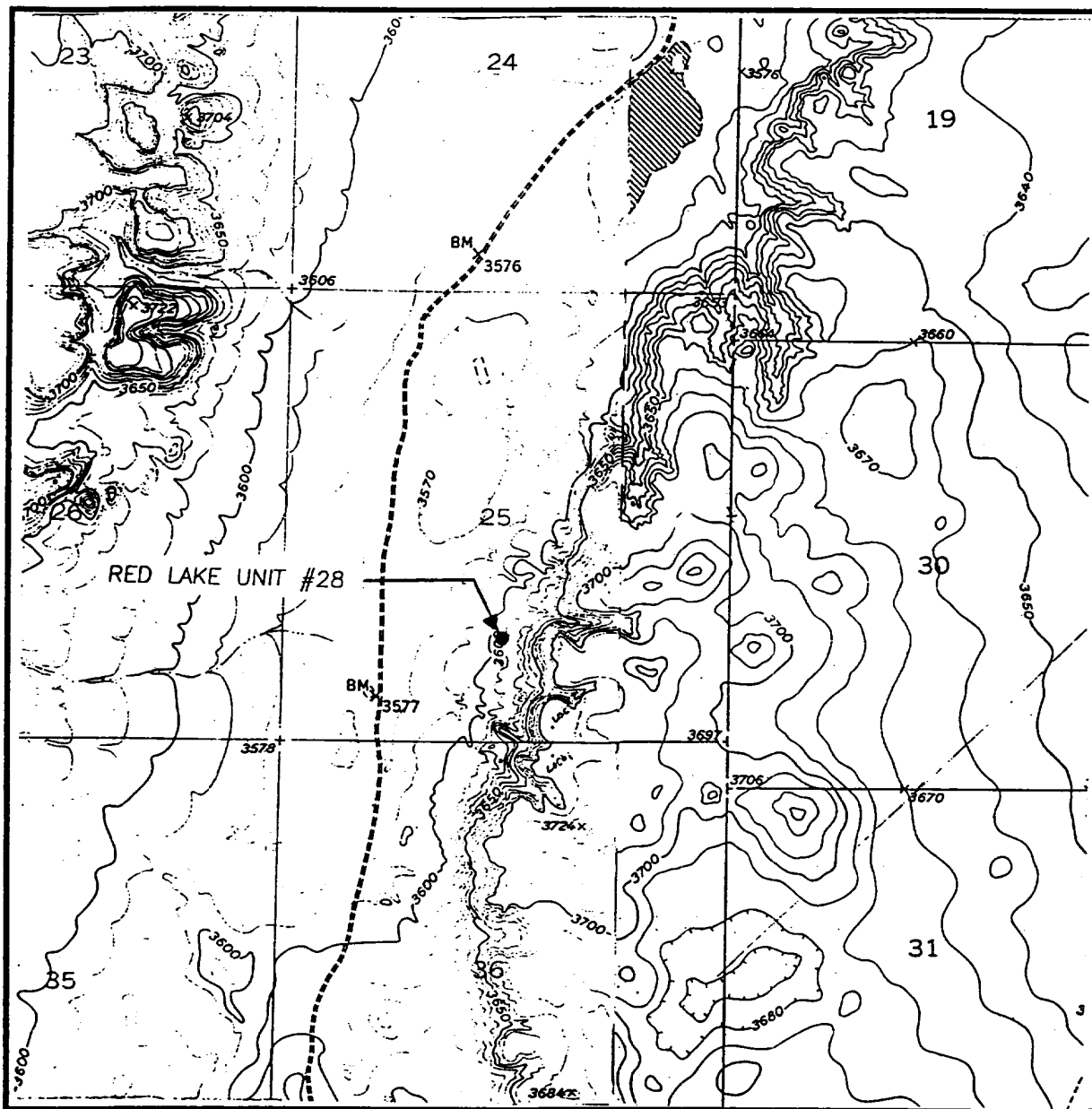
ELEVATION 3604

OPERATOR BEACH EXPLORATION, INC.

LEASE RED LAKE UNIT

JOHN WEST ENGINEERING
HOBBS, NEW MEXICO
(505) 393-3117

LOCATION VERIFICATION MAP



SCALE: 1" = 2000'

CONTOUR INTERVAL:
DIAMOND MOUND - 10'
BASIN WELL - 10'

SEC. 25 TWP. 16-S RGE. 28-E

SURVEY N.M.P.M.

COUNTY EDDY

DESCRIPTION 1200' FSL & 2600' FWL

ELEVATION 3604

OPERATOR BEACH EXPLORATION, INC.

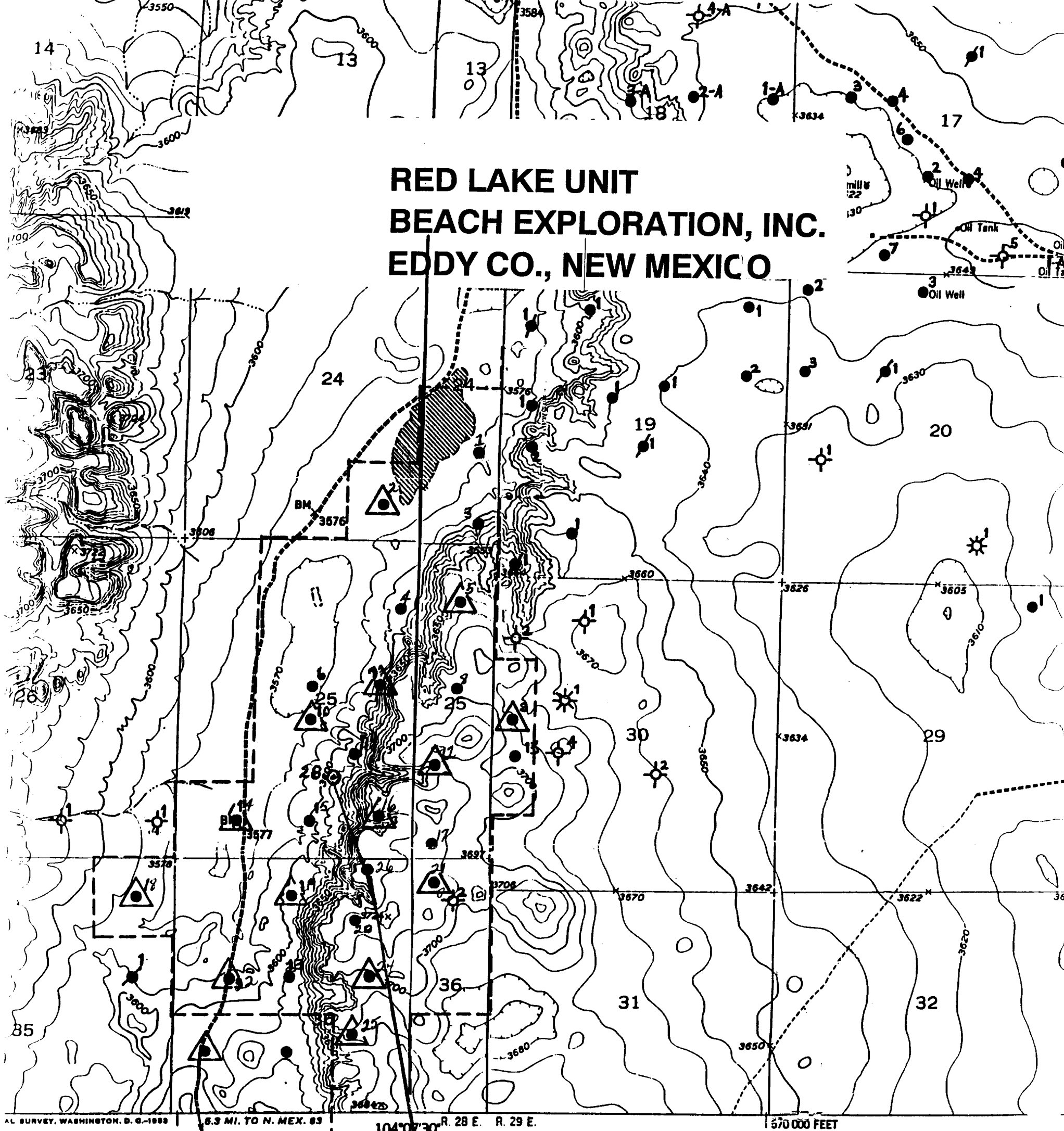
LEASE RED LAKE UNIT

U.S.G.S. TOPOGRAPHIC MAP

DIAMOND MOUND, BASIN WELL, N.M.

JOHN WEST ENGINEERING
HOBBS, NEW MEXICO
(505) 393-3117

RED LAKE UNIT
BEACH EXPLORATION, INC.
EDDY CO., NEW MEXICO



U.S. GEOLOGICAL SURVEY, WASHINGTON, D. C., 1988 6.3 MI. TO N. MEX. 83 104°07'30" R. 28 E. R. 29 E. 1570 000 FEET

ROAD CLASSIFICATION

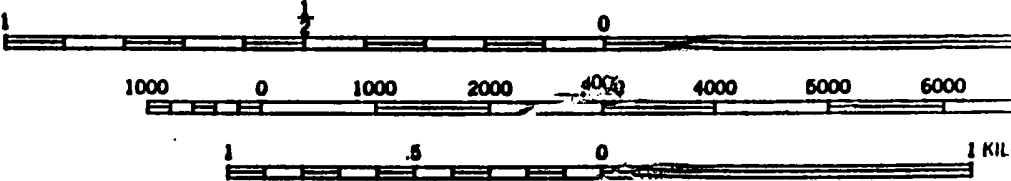
- Heavy-duty 4 LANE 16 LANE Light-duty
Medium-duty 4 LANE 16 LANE Unimproved dirt
 U. S. Route State Route

Unit Boundary

- Injection Well
 Producing Well

Proposed Location
Red Lake Unit #28
Sec. 25, T16S, R28E
Eddy Co., NM
1200' FSL & 2600' FWL

SCALE 1:24000



CONTOUR INTERVAL 10 FEET
DATUM IS MEAN SEA LEVEL

THIS MAP COMPLIES WITH NATIONAL MAP ACCURACY STANDARDS
U. S. GEOLOGICAL SURVEY, FEDERAL CENTER, DENVER, COLORADO
A FOLDER DESCRIBING TOPOGRAPHIC MAPS AND SYMBOLS IS AVAILABLE ON REQUEST

