

State of New Mexico
Energy, Minerals & Natural Resources Depart.

Form C-101
Revised October 18, 1994
Instructions on back
Submit to Appropriate District Office
State Lease - 6 Copies
Fee Lease - 5 Copies

OIL CONSERVATION DIVISION
2040 South Pacheco
Santa Fe, NM 87505

District I
PO Box 1980, Hobbs, NM 88241-1980
District II
811 S. 1st Street, Artesia, NM 88210-2834
District III
1000 Rio Brazos Rd., Aztec, NM 87410
District IV
2040 South Pacheco, Santa Fe, NM 87505

☐ AMENDED REPORT

APPLICATION FOR PERMIT TO DRILL, RE-ENTER, DEEPEN, PLUGBACK, OR ADD A ZONE

1 Operator name and Address ARCO PERMIAN P.O. BOX 1610 MIDLAND, TX 79702		2 OGRID Number 000990	
4 Property Code 22954		3 API Number 30-015-30195	
5 Property Name WASHINGTON "33" STATE		6 Well No. 21	

7 Surface Location									
UL or lot no.	Section	Township	Range	Lot. Idn	Feet from the	North/South Line	Feet from the	East/West line	County
L	33	17S	28E		2310	SOUTH	990	WEST	EDDY

8 Proposed Bottom Hole Location If Different From Surface									
UL or lot no.	Section	Township	Range	Lot. Idn	Feet from the	North/South Line	Feet from the	East/West line	County
9 Proposed Pool 1					10 Proposed Pool 2				
ARTESIA (Q-G-SA)									

11 Work Type Code N	12 Well Type Code O	13 Cable/Rotary R	14 Lease Type Code S	15 Ground Level Elevation 3672'
16 Multiple NO	17 Proposed Depth 3200	18 Formation SAN ANDRES	19 Contractor	20 Spud Date 4/98

21 Proposed Casing and Cement Program					
Hole Size	Casing Size	Casing weight/foot	Setting Depth	Sacks of Cement	Estimated TOC
12-1/4	8-5/8	24#	500'	450	CIRC. TO SURF.
7-7/8	5-1/2	15.5#	3200	1200	CIRC. TO SURF.

22 Describe the proposed program. If this application is to DEEPEN or PLUG BACK give the data on the present productive zone and proposed new productive zone. Describe the blowout prevention program, if any. Use additional sheets if necessary

DRILL SURFACE HOLE W/FRESH WATER TO 500'. SET & CEMENT 8-5/8" CASING.
DRILL 7-7/8" HOLE TO 2000; W/SATURATED BRINE. DRILL 3200' TD W/ SACT GEL
USING PRE-HYDRATED FW GEL SWEEPS, FL +/- 15CC. LOG WELL, RUN & CEMENT
5-1/2" CASING. COMPLETE AND TEST SAN ANDRES FORMATION.

SUBJECT WELL PLANNED AS A 3200' STRAIGHT HOLE.
3000 PSI BOPE WILL BE USED FORM 500' TO TD.

Posted 10-1
H & API
4-10-98

23 I hereby certify that the information given above is true and complete to the best of my knowledge and belief.

Signature:

Printed name: ELIZABETH A. CASBEER

Title: REG./COMP. ANALYST

OIL CONSERVATION DIVISION

Approved by:

ORIGINAL SIGNED BY TIM W. GUN

Title:

DISTRICT II SUPERVISOR

Approval Date:

4-2-98

Expiration Date:

4-2-99

DISTRICT I
P.O. Box 1980, Hobbs, NM 88241-1980

State of New Mexico
Energy, Minerals and Natural Resources Department

Form C-102
Revised February 10, 1994
Submit to Appropriate District Office
State Lease - 4 Copies
Fee Lease - 3 Copies

DISTRICT II
P.O. Drawer DD, Artesia, NM 88211-0719

DISTRICT III
1000 Rio Brazos Rd., Aztec, NM 87410

DISTRICT IV
P.O. BOX 2088, SANTA FE, N.M. 87504-2088

OIL CONSERVATION DIVISION

P.O. Box 2088
Santa Fe, New Mexico 87504-2088

☐ AMENDED REPORT

WELL LOCATION AND ACREAGE DEDICATION PLAT

API Number	Pool Code	Pool Name ARTESIA (Q-G-SA)
Property Code	Property Name WASHINGTON 33 STATE	Well Number 21
OGRID No. 000990	Operator Name ARCO PERMIAN	Elevation 3672'

Surface Location

UL or lot No. L	Section 33	Township 17 S	Range 28 E	Lot Idn	Feet from the 2310	North/South line SOUTH	Feet from the 990	East/West line WEST	County EDDY
---------------------------	----------------------	-------------------------	----------------------	---------	------------------------------	----------------------------------	-----------------------------	-------------------------------	-----------------------

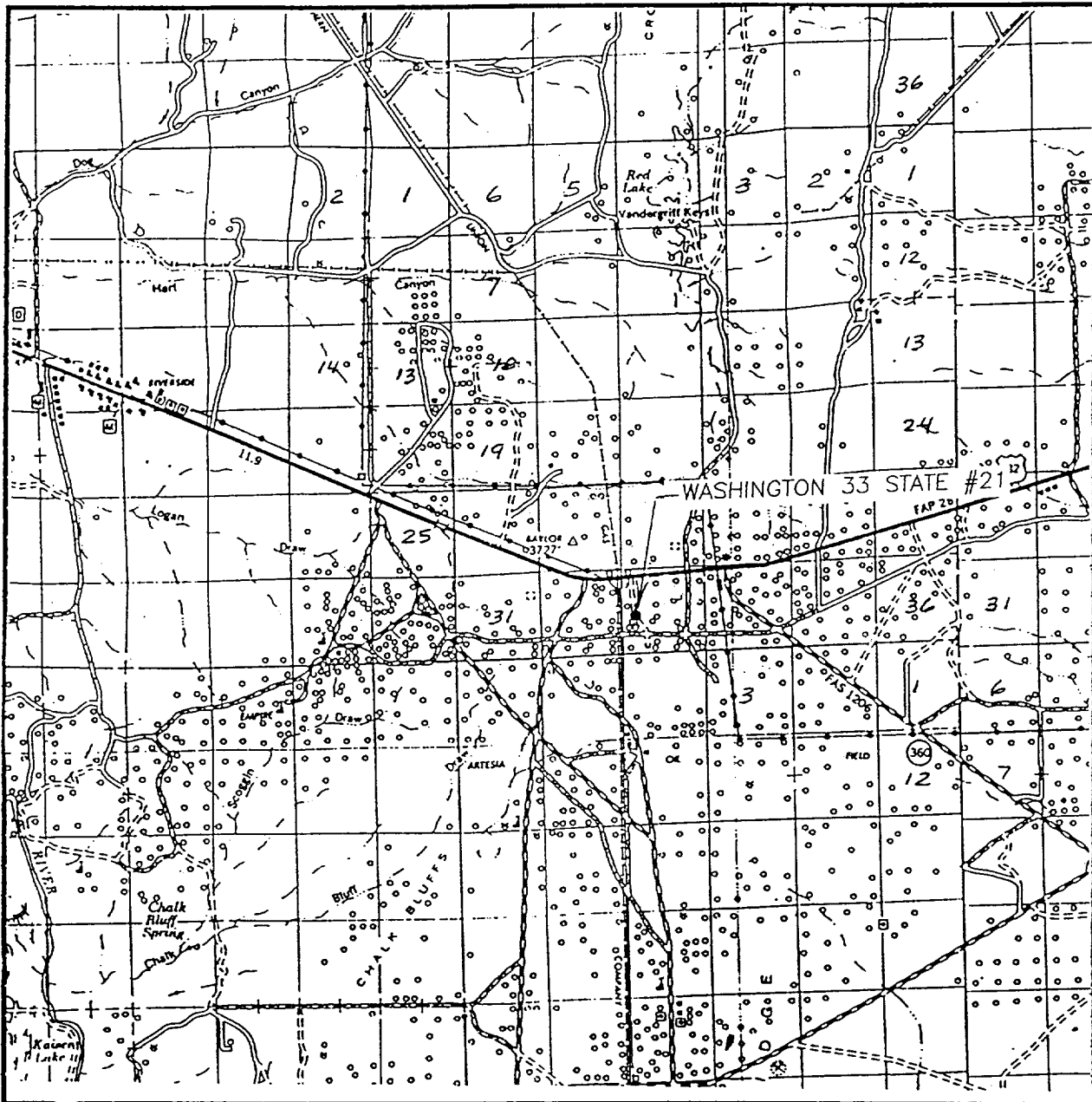
Bottom Hole Location If Different From Surface

UL or lot No.	Section	Township	Range	Lot Idn	Feet from the	North/South line	Feet from the	East/West line	County
Dedicated Acres 40	Joint or Infill	Consolidation Code	Order No.						

NO ALLOWABLE WILL BE ASSIGNED TO THIS COMPLETION UNTIL ALL INTERESTS HAVE BEEN CONSOLIDATED
OR A NON-STANDARD UNIT HAS BEEN APPROVED BY THE DIVISION

<p>990'</p> <p>2310'</p> <p>022</p>	<p>06</p> <p>09</p>	<p>01</p> <p>013</p>	OPERATOR CERTIFICATION <p>I hereby certify the the information contained herein is true and complete to the best of my knowledge and belief.</p> <p><i>Elizabeth A. Casbeer</i> Signature ELIZABETH A. CASBEER Printed Name REG / COMP. ANALYST Title 3/23/98 Date</p>
			SURVEYOR CERTIFICATION <p>I hereby certify that the well location shown on this plat was plotted from field notes of actual surveys made by me or under my supervision, and that the same is true and correct to the best of my belief.</p> <p>MARCH 3, 1998 Date Surveyed CDG</p> <p><i>Ronald E. Edson</i> Signature & Seal of Professional Surveyor NEW MEXICO 3-05-98 98-11-0572</p> <p>Certificate No. RONALD E. EDSON 3239 EDSON 12641</p>

VICINITY MAP



SCALE: 1" = 2 MILES

SEC. 33 TWP. 17-S RGE. 28-E

SURVEY N.M.P.M.

COUNTY EDDY

DESCRIPTION 2310' FSL & 990' FWL

ELEVATION 3672'

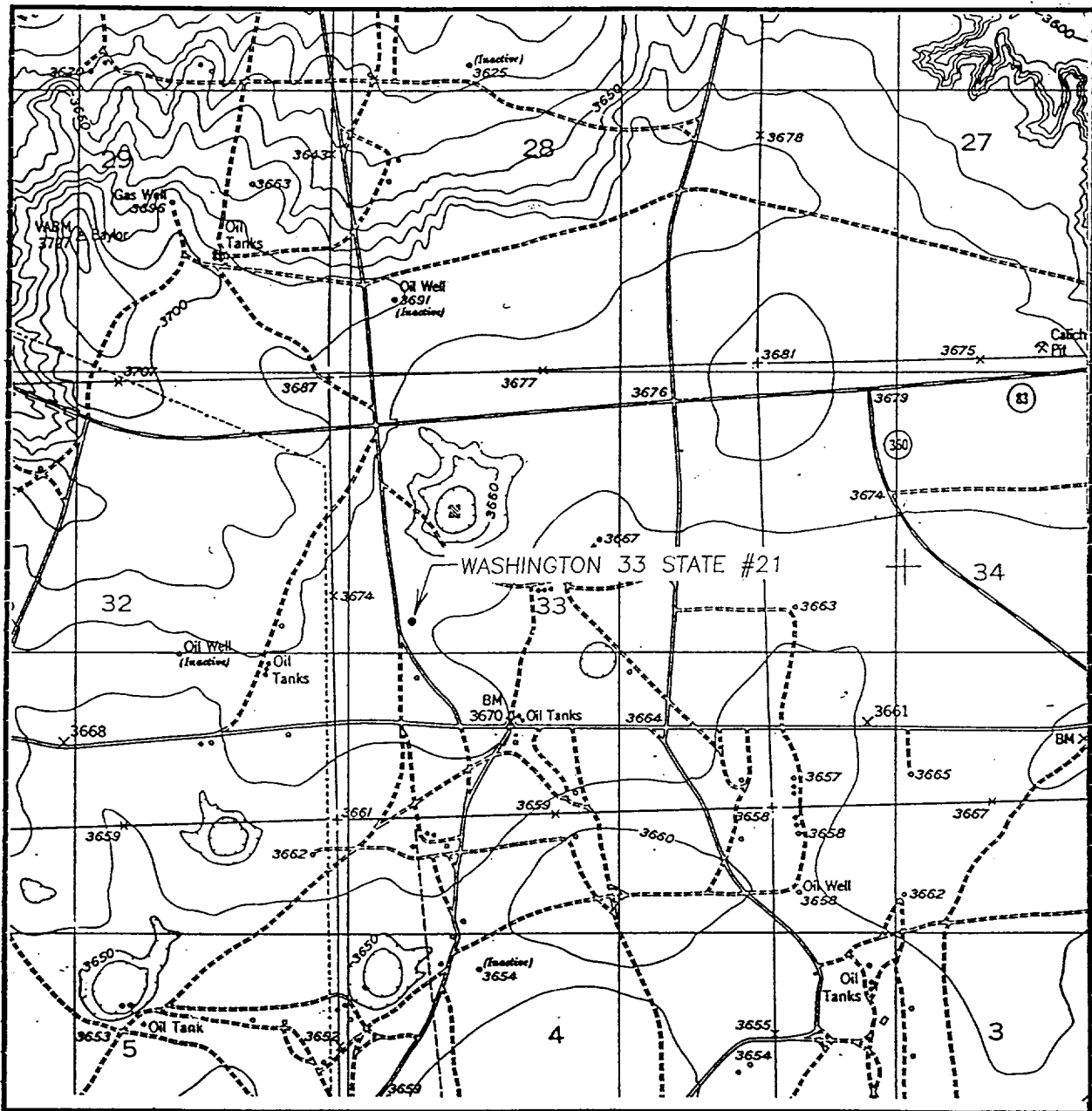
OPERATOR ARCO PERMIAN

LEASE WASHINGTON 33 STATE

JOHN WEST ENGINEERING
HOBBS, NEW MEXICO

(505) 393-3117

LOCATION VERIFICATION MAP



SCALE: 1" = 2000'

CONTOUR INTERVAL - 10'

SEC. 33 TWP. 17-S RGE. 28-E

SURVEY N.M.P.M.

COUNTY EDDY

DESCRIPTION 2310' FSL & 990' FWL

ELEVATION 3672'

OPERATOR ARCO PERMIAN

LEASE WASHINGTON 33 STATE

U.S.G.S. TOPOGRAPHIC MAP

RED LAKE, NM

JOHN WEST ENGINEERING
HOBBS, NEW MEXICO
(505) 393-3117