

District I  
PO Box 1980, Hobbs, NM 88241-1980  
  
District II  
PO Drawer DD, Artesia, NM 88211-0719  
  
District III  
1000 Rio Brazos Rd., Aztec, NM 87410  
  
District IV  
PO Box 2088, Santa Fe, NM 87504-2088

State of New Mexico  
Energy, Minerals & Natural Resources Department

OIL CONSERVATION DIVISION  
PO Box 2088  
Santa Fe, NM 87504-2088

Form C-101  
Revised February 10, 1994  
Instructions on back  
Submit to Appropriate District Office  
State Lease - 6 Copies  
Fee Lease - 5 Copies

RECEIVED  
OCD - ARTESIA

AMENDED REPORT

APPLICATION FOR PERMIT TO DRILL, RE-ENTER, DEEPEN, PLUGBACK, OR ADD A ZONE

<sup>2</sup> Operator Name and Address. Devon Energy Corporation (Nevada) 1500 Mid America Tower 20 N. Broadway Oklahoma City, OK 73102-8260		<sup>1</sup> OGRID Number 6137
		<sup>3</sup> API Number 30-015- 30203
<sup>4</sup> Property Code 23150	<sup>5</sup> Property Name HEARD STATE	<sup>6</sup> Well No. 2

<sup>7</sup> Surface Location

UL or lot no. N	Section 32	Township 17S	Range 27E	Lot Ids	Feet from the 990	North/South line South	Feet from the 1900	East/West line West	County Eddy
--------------------	---------------	-----------------	--------------	---------	----------------------	---------------------------	-----------------------	------------------------	----------------

<sup>8</sup> Proposed Bottom Hole Location If Different From Surface

UL or lot no.	Section	Township	Range	Lot Ids	Feet from the	North/South line	Feet from the	East/West line	County
<sup>9</sup> Proposed Pool 1 Red Lake (Q-GB-SA)						<sup>10</sup> Proposed Pool 2			

<sup>11</sup> Work Type Code N	<sup>12</sup> Well Type Code O	<sup>13</sup> Cable/Rotary Rotary	<sup>14</sup> Lease Type Code S	<sup>15</sup> Ground Level Elevation 3433'
<sup>16</sup> Multiple No	<sup>17</sup> Proposed Depth 2600'	<sup>18</sup> Formation San Andres	<sup>19</sup> Contractor Unknown	<sup>20</sup> Spud Date May 1, 1998

<sup>21</sup> Proposed Casing and Cement Program

Hole Size	Casing Size	Casing weight/foot	Setting Depth	Sacks of Cement	Estimated TOC
17 1/2"	14"	Conductor	40'	Readymix	surface
12 1/4"	8 5/8"	24 ppf	1100'	300 lite, 200 "C"	surface
7 7/8"	5 1/2"	15.5 ppf	2600'	100 lite, 300 "C"	surface

<sup>22</sup> Describe the proposed program. If this application is to DEEPEN or PLUG BACK give the data on the present productive zone and proposed new productive zone. Describe the blowout prevention program, if any. Use additional sheets if necessary.

We plan to drill this well to a total depth of +/- 2600' and complete it as an oil well. If the well is deemed non-commercial, then it will be plugged and abandoned in accordance with the rules established by the OCD of New Mexico. BOP's will be installed while drilling the production hole.

Posted TO-1  
N & API  
4-10-98

<sup>23</sup> I hereby certify that the information given above is true and complete to the best of my knowledge and belief.		OIL CONSERVATION DIVISION	
Signature: <u>E. L. Buttross Jr.</u>		Approved by: <b>ORIGINAL SIGNED BY TIM W. GUN</b>	
Printed name: E. L. Buttross Jr.		Title: <b>DISTRICT II SUPERVISOR</b>	
Title: District Engineer		Approval Date: <u>4-8-98</u>	Expiration Date:
Date: 3/27/98	Phone: (405) 235-3611 x 4509	Conditions of Approval: <u>4-8-99</u>	
		Attached <input type="checkbox"/>	

2010 年 11 月 11 日 星期五  
2010 年 11 月 11 日 星期五

DISTRICT I  
P.O. Box 1980, Hobbs, NM 88240

State of New Mexico

Energy, Minerals and Natural Resources Department

Form C-102  
Revised February 10, 1994  
Instruction on back  
Submit to Appropriate District Office  
State Lease - 4 Copies  
Fee Lease - 3 Copies

DISTRICT II  
P.O. Drawer DD, Artesia, NM 88210

DISTRICT III  
1000 Rio Brazos Rd., Aztec, NM 87410

OIL CONSERVATION DIVISION

P.O. Box 2088  
Santa Fe, New Mexico 87504-2088

☐ AMENDED REPORT

WELL LOCATION AND ACREAGE DEDICATION PLAT

API Number	Pool Code	Pool Name Red Lake (Q-GB-SA)
Property Code	Property Name Heard State	Well Number 2
OGRID No.	Operator Name Devon Energy Corporation	Elevation 3433'

Surface Location

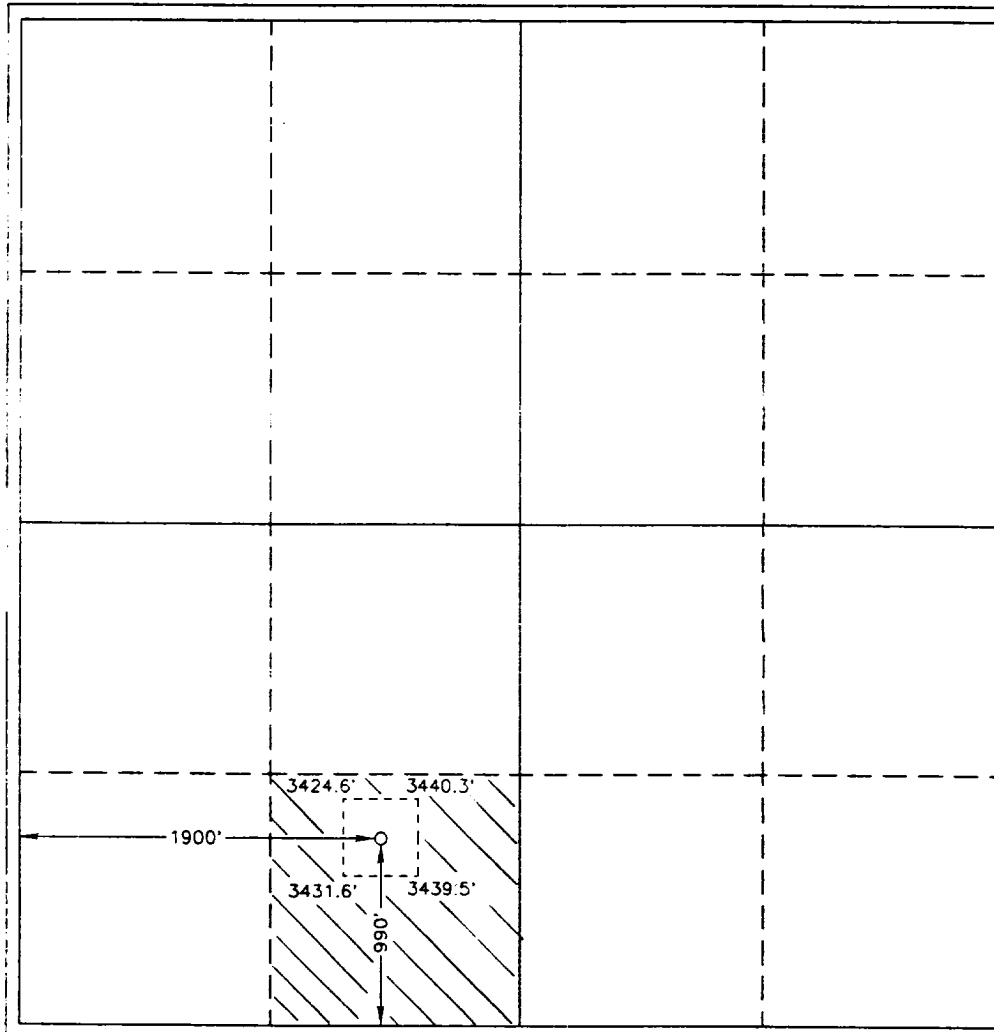
UL or lot No. N	Section 32	Township 17 S	Range 27 E	Lot Idn	Feet from the 990	North/South line South	Feet from the 1900	East/West line West	County Eddy
--------------------	---------------	------------------	---------------	---------	----------------------	---------------------------	-----------------------	------------------------	----------------

Bottom Hole Location If Different From Surface

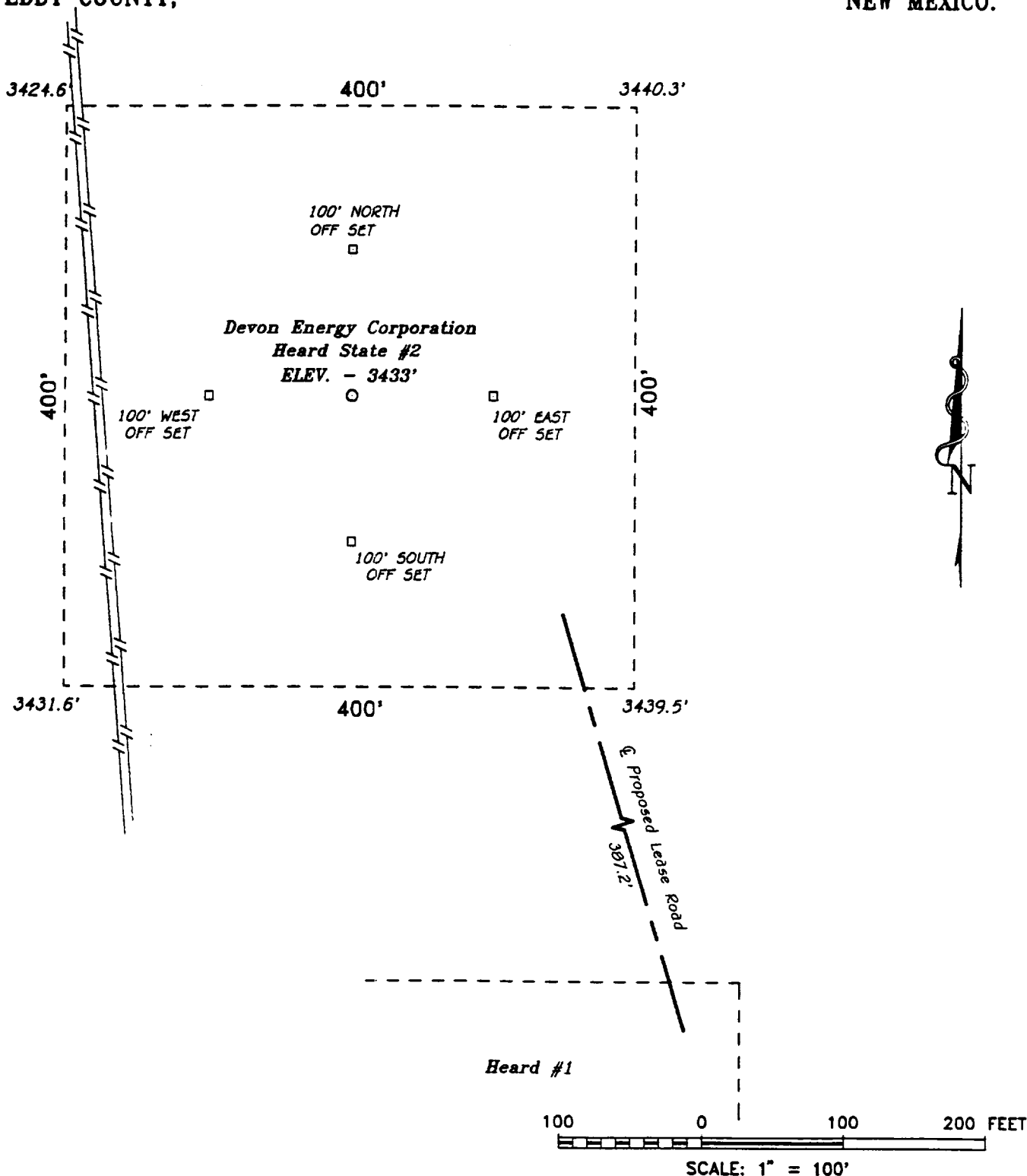
UL or lot No.	Section	Township	Range	Lot Idn	Feet from the	North/South line	Feet from the	East/West line	County
---------------	---------	----------	-------	---------	---------------	------------------	---------------	----------------	--------

Dedicated Acres	Joint or Infill	Consolidation Code	Order No.
-----------------	-----------------	--------------------	-----------

NO ALLOWABLE WILL BE ASSIGNED TO THIS COMPLETION UNTIL ALL INTERESTS HAVE BEEN CONSOLIDATED  
OR A NON-STANDARD UNIT HAS BEEN APPROVED BY THE DIVISION

				<p>OPERATOR CERTIFICATION</p> <p>I hereby certify the the information contained herein is true and complete to the best of my knowledge and belief.</p> <p><u>E.L. Buttross Jr.</u> Signature</p> <p>E.L. Buttross Jr. Printed Name</p> <p>District Engineer Title</p> <p>3/27/98 Date</p>	
<p>SURVEYOR CERTIFICATION</p> <p>I hereby certify that the well location shown on this plat was plotted from field notes of actual surveys made by me or under my supervision, and that the same is true and correct to the best of my belief.</p> <p>February 20, 1998 Date Surveyed</p> <p>W. L. JONES Signature of Surveyor</p> <p>Professional Surveyor</p> <p>W.O. No. 80981</p> <p>Certificate No. 7977</p> <p>BASIN SURVEYS</p>					

SECTION 32, TOWNSHIP 17 SOUTH, RANGE 27 EAST, N.M.P.M.,  
EDDY COUNTY, NEW MEXICO.



**Devon Energy Corporation**

REF: Heard State No. 2 / Well Pad Topo

THE HEARD STATE No. 2 LOCATED 990' FROM  
THE SOUTH LINE AND 1900' FROM THE WEST LINE OF  
SECTION 32, TOWNSHIP 17 SOUTH, RANGE 27 EAST,  
N.M.P.M., EDDY COUNTY, NEW MEXICO.

**BASIN SURVEYS** P.O. BOX 1786-HOBBS, NEW MEXICO

W.O. Number: 8098

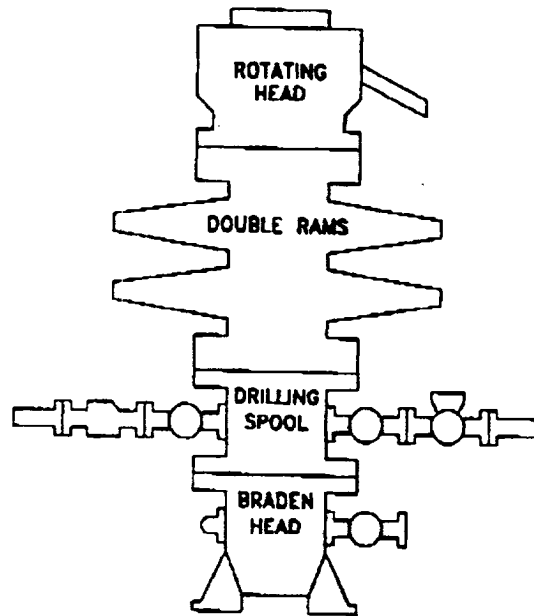
Drawn By: S.C. NICHOLS

Date: 02-26-98

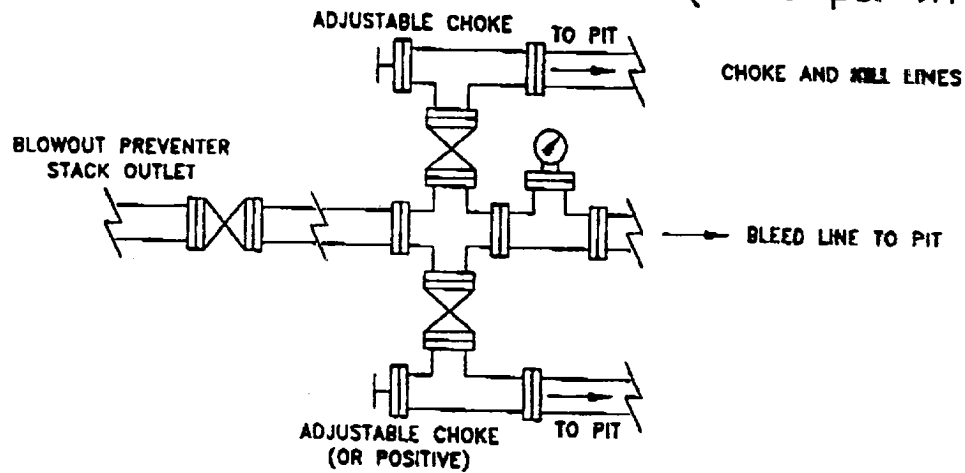
Disk: SCN #39 - 8098II.DWG

Survey Date: 02-20-98

Sheet 1 of 1 Sheets



## CHOKE MANIFOLD REQUIREMENT (2000 psi WP)



**devon**

**WEST RED LAKE**  
EDDY COUNTY, NEW MEXICO

**BLOWOUT PREVENTOR**  
(2000 PSI WORKING WP)

WELHEAD	