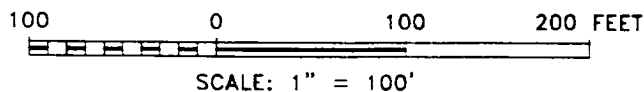
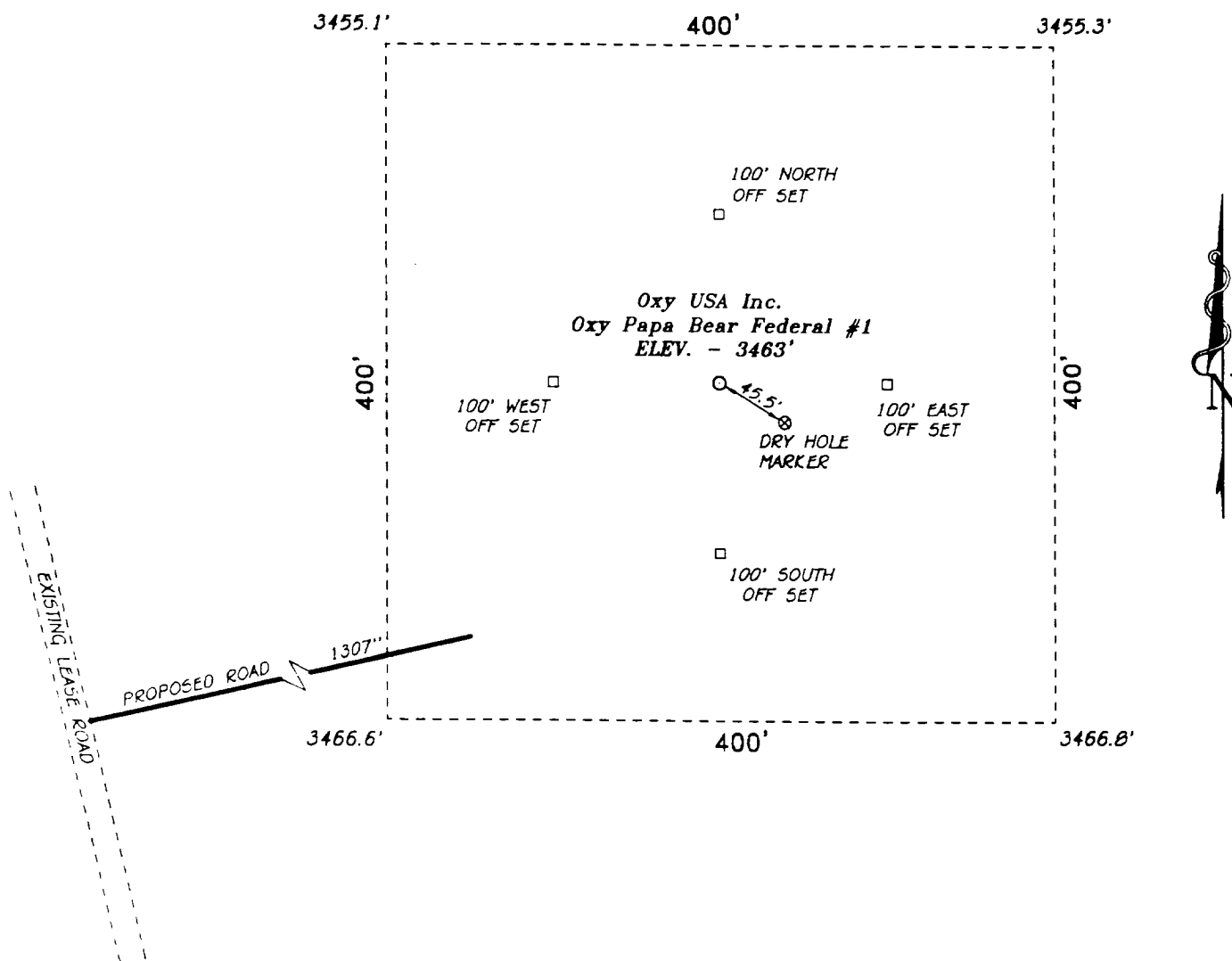


SECTION 7, TOWNSHIP 17 SOUTH, RANGE 28 EAST, N.M.P.M.,  
EDDY COUNTY, NEW MEXICO.



**Oxy USA Inc.**

REF: Oxy Papa Bear Fed. No. 1/ Well Pad Topo

THE OXY PAPA BEAR FED. No. 1 LOCATED 1980' FROM THE  
SOUTH LINE AND 1980' FROM THE WEST LINE OF  
SECTION 7, TOWNSHIP 17 SOUTH, RANGE 28 EAST,  
N.M.P.M., EDDY COUNTY, NEW MEXICO.

**BASIN SURVEYS** P.O. BOX 1786-HOBBS, NEW MEXICO

W.O. Number: 8509

Drawn By: K. GOAD

Sheet: 11-25-98

Disk: KJG #119 - 8509A.DWG

Survey Date: 11-24-98

Sheet 1 of 1 Sheets