

DISTRICT I
1625 N. French Dr., Hobbs, NM 58240
DISTRICT II
811 South First, Artesia, NM 88210

DISTRICT III
1000 Rio Brazos Rd., Artec, NM 87410

DISTRICT IV
2040 South Pacheco, Santa Fe, NM 87606

State of New Mexico
Energy, Minerals and Natural Resources Department

Form C-102
Revised March 17, 1999

Submit to Appropriate District Office
State Lease -- 4 Copies
Fee Lease -- 3 Copies

OIL CONSERVATION DIVISION

2040 South Pacheco
Santa Fe, New Mexico 87504-2088

☐ AMENDED REPORT

WELL LOCATION AND ACREAGE DEDICATION PLAT

| | | |
|----------------------------|--|---------------------------------|
| API Number 30-015-31293 | Pool Code | Pool Name Wildcat Upper Penn |
| Property Code 26001 | Property Name GERONIMO "34" STATE | Well Number 1 Y |
| OGRID No. 025773 | Operator Name LOUIS DREYFUS NATURAL GAS CORPORATION | Elevation 3673' |

Surface Location

| | | | | | | | | | |
|--------------------|---------------|------------------|---------------|---------|-----------------------|---------------------------|-----------------------|------------------------|----------------|
| UL or lot No. E | Section 34 | Township 17 S | Range 28 E | Lot Idn | Feet from the 1700 | North/South line NORTH | Feet from the 1020 | East/West line WEST | County EDDY |
|--------------------|---------------|------------------|---------------|---------|-----------------------|---------------------------|-----------------------|------------------------|----------------|

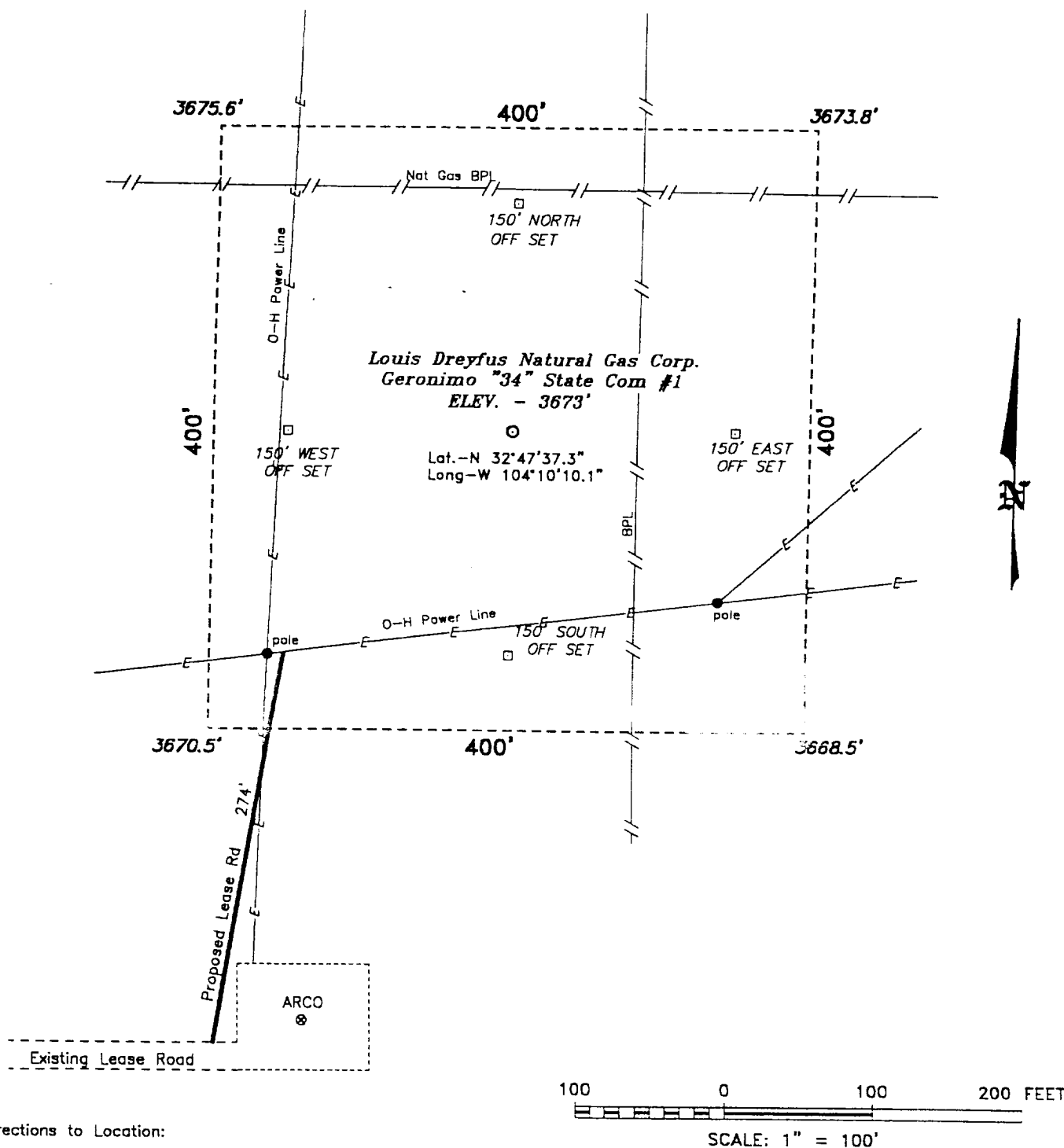
Bottom Hole Location If Different From Surface

| | | | | | | | | | |
|-----------------------|----------------------|--------------------|-----------|---------|---------------|------------------|---------------|----------------|--------|
| UL or lot No. | Section | Township | Range | Lot Idn | Feet from the | North/South line | Feet from the | East/West line | County |
| Dedicated Acres 40 | Joint or Infill N | Consolidation Code | Order No. | | | | | | |

NO ALLOWABLE WILL BE ASSIGNED TO THIS COMPLETION UNTIL ALL INTERESTS HAVE BEEN CONSOLIDATED
OR A NON-STANDARD UNIT HAS BEEN APPROVED BY THE DIVISION

| | |
|--|---|
| | <p>OPERATOR CERTIFICATION</p> <p>I hereby certify the the information contained herein is true and complete to the best of my knowledge and belief.</p> <p><i>Gene Simer</i> Signature</p> <p>Gene Simer Printed Name</p> <p>Dist. Ops. Mgr. Title</p> <p>05-31-00 Date</p> |
| | <p>SURVEYOR CERTIFICATION</p> <p>I hereby certify that the well location shown on this plat was plotted from field notes of actual surveys made by me or under my supervision, and that the same is true and correct to the best of my belief.</p> <p>May 19, 2000 Date Surveyed</p> <p><i>W. Q. Jones</i> Signature of Surveyor</p> <p>W. Q. Jones Professional Surveyor</p> <p>7977 Certificate No.</p> |

SECTION 34, TOWNSHIP 17 SOUTH, RANGE 28 EAST, N.M.P.M.,
EDDY COUNTY, NEW MEXICO.



Directions to Location:

FROM THE JUNCTION OF US HWY 82 AND STATE
HWY 360, GO SOUTH ON HWY 360 APPROX. 1400
FEET TO A POINT WHICH LIES APPROX. 1000 FEET
EAST OF THE PROPOSED WELL LOCATION.

BASIN SURVEYS P.O. BOX 1786 - HOBBS, NEW MEXICO

W.O. Number: 0282

Drawn By: K. GOAD

Date: 05-30-2000

Disk: KJG #122 - 0282A.DWG

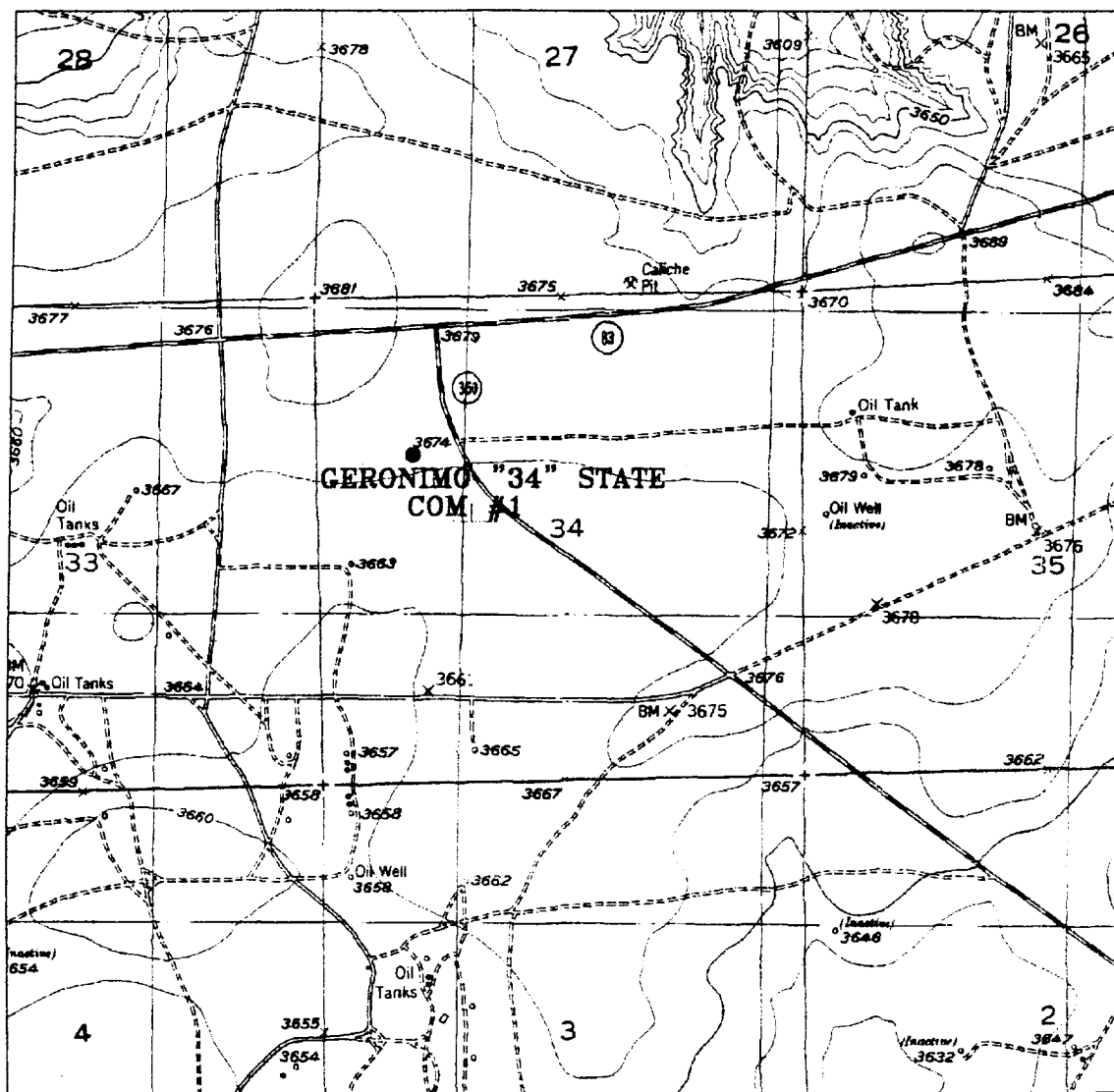
Louis Dreyfus Natural Gas Corp.

REF: Geronimo "34" State Com #1 / Well Pad Topo

THE GERONIMO "34" STATE COM No. 1 LOCATED 1700' FROM
THE NORTH LINE AND 1020' FROM THE WEST LINE OF
SECTION 34, TOWNSHIP 17 SOUTH, RANGE 28 EAST,
N.M.P.M., EDDY COUNTY, NEW MEXICO.

Survey Date: 05-19-2000

Sheet 1 of 1 Sheets



GERONIMO "34" STATE COM #1

Located at 1700' FNL and 1020' FWL
 Section 34, Township 17 South, Range 28 East,
 N.M.P.M., Eddy County, New Mexico.

basin
surveys

focused on excellence
 in the oilfield

P.O. Box 1786
 1120 N. West County Rd.
 Hobbs, New Mexico 88241
 (505) 393-7316 - Office
 (505) 392-3074 - Fax
 basinsurveys.com

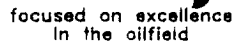
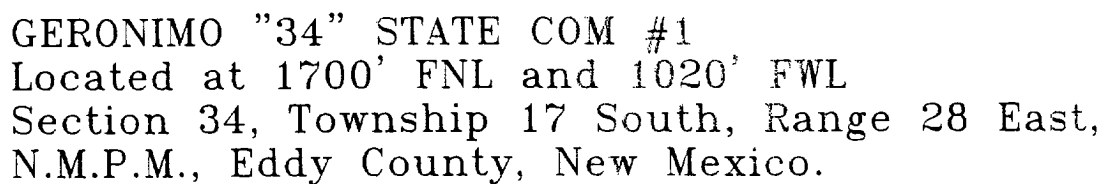
W.O. Number: 02B2AA - KJG #122

Survey Date: 05-19-2000

Scale: 1" = 2000'

Date: 05-30-2000

LOUIS DREYFUS
NATURAL GAS
CORPORATION



Date: 05-30-2000

LOUIS DREYFUS
NATURAL GAS
CORPORATION