

District I  
1625 N. French Dr., Hobbs, NM 88240  
District II  
811 South First, Artesia, NM 88210  
District III  
1000 Rio Brazos Road, Aztec, NM 87410  
District IV  
2040 South Pacheco, Santa Fe, NM 87505

State of New Mexico  
Energy Minerals and Natural Resources

Oil Conservation Division  
2040 South Pacheco  
Santa Fe, NM 87505

Form C-101  
Revised March 17, 1999

Submit to appropriate District Office  
State Lease - 6 Copies  
Fee Lease - 5 Copies

☐ AMENDED REPORT

**APPLICATION FOR PERMIT TO DRILL, RE-ENTER, DEEPEN, PLUGBACK, OR ADD A ZONE**

<sup>1</sup> Operator Name and Address Gruy Petroleum Management Co. P. O. Box 140907 Irving TX 75014-0907		<sup>2</sup> OGRID Number 162685
<sup>3</sup> Property Code 27148	<sup>5</sup> Property Name Aid 24P State	<sup>4</sup> API Number 30 - 015-31680
		<sup>6</sup> Well No. 2

<sup>7</sup> Surface Location

UL or lot no.	Section	Township	Range	Lot Idn	Feet from the	North/South line	Feet from the	East/West line	County
I	24	17S	28E		1750'	South	850'	East	Eddy

<sup>8</sup> Proposed Bottom Hole Location If Different From Surface

UL or lot no.	Section	Township	Range	Lot Idn	Feet from the	North/South line	Feet from the	East/West line	County

<sup>9</sup> Proposed Pool 1

Empire Yeso

<sup>10</sup> Proposed Pool 2

Undesignated Queen Grayburg San Andres

<sup>11</sup> Work Type Code N	<sup>12</sup> Well Type Code O	<sup>13</sup> Cable/Rotary R	<sup>14</sup> Lease Type Code S	<sup>15</sup> Ground Level Elevation 3682'
<sup>16</sup> Multiple No	<sup>17</sup> Proposed Depth 4500'	<sup>18</sup> Formation Paddock	<sup>19</sup> Contractor Unknown	<sup>20</sup> Spud Date When Approved

<sup>21</sup> Proposed Casing and Cement Program

Hole Size	Casing Size	Casing weight/foot	Setting Depth	Sacks of Cement	Estimated TOC
	@ 350' or above		SALT		
12 1/4"	K-55 8-5/8"	24 #	6X	465 sx	Surface
7-7/8"	J-55 5 1/2"	15.5	4500'	1000 sx	Surface

<sup>22</sup> Describe the proposed program. If this application is to DEEPEN or PLUG BACK, give the data on the present productive zone and proposed new productive zone. Describe the blowout prevention program, if any. Use additional sheets if necessary.

The proposed well will be drilled to a depth of 4500' and completed as a Yeso Paddock producer.

From the base of the surface pipe through the running of production casing, the well will be equipped with a 3000-psi BOP system.

<sup>23</sup> I hereby certify that the information given above is true and complete to the best of my knowledge and belief.

Signature:

Printed name: Zeno Farris

Title: Manager Operations Administration

Date:  
04-2-01

Phone:  
972-401-3111

OIL CONSERVATION DIVISION

Approved by: ORIGINAL SIGNED BY TIM W. GUM

Title: DISTRICT IV SUPERVISOR

Approval Date: APR 08 2001

Expiration Date: APR 08 2002

Conditions of Approval:

Attached ☐

DISTRICT I  
1825 N. French Dr., Hobbs, NM 88240

DISTRICT II  
811 South First, Artesia, NM 88210

DISTRICT III  
1000 Rio Brazos Rd., Aztec, NM 87410

DISTRICT IV  
2040 South Pacheco, Santa Fe, NM 87505

State of New Mexico  
Energy, Minerals and Natural Resources Department

Form C-102  
Revised March 17, 1999

Submit to Appropriate District Office  
State Lease - 4 Copies  
Fee Lease - 3 Copies

OIL CONSERVATION DIVISION  
2040 South Pacheco  
Santa Fe, New Mexico 87504-2088

☐ AMENDED REPORT

WELL LOCATION AND ACREAGE DEDICATION PLAT

API Number	Pool Code	Pool Name Empire; Yeso
Property Code	Property Name AID 24 P State	Well Number 2
OGRID No.	Operator Name GRUY PETROLEUM MANAGEMENT COMPANY	Elevation 3682'

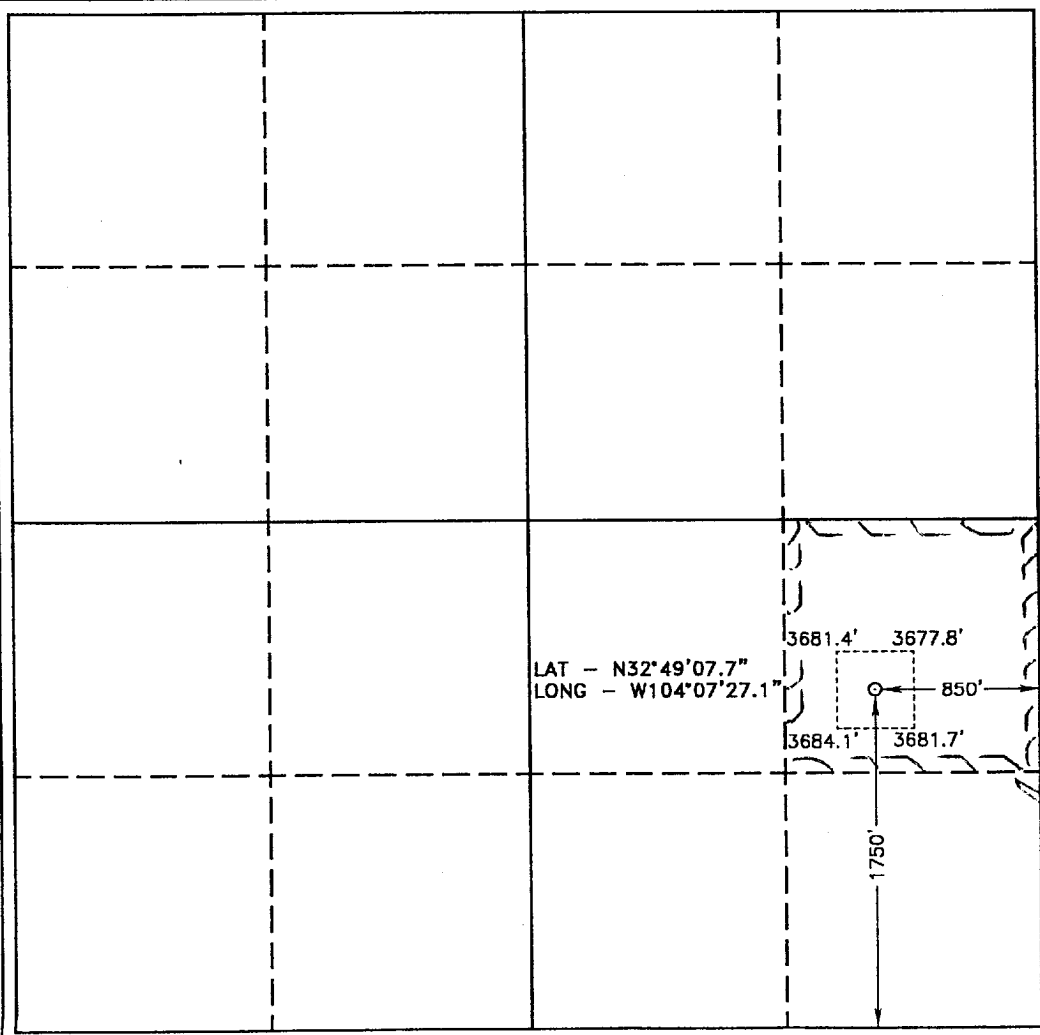
Surface Location

UL or lot No.	Section	Township	Range	Lot Idn	Feet from the	North/South line	Feet from the	East/West line	County
1	24	17 S	28 E		1750	SOUTH	850	EAST	EDDY

Bottom Hole Location If Different From Surface

UL or lot No.	Section	Township	Range	Lot Idn	Feet from the	North/South line	Feet from the	East/West line	County
Dedicated Acres 40	Joint or Infill N	Consolidation Code	Order No.						

NO ALLOWABLE WILL BE ASSIGNED TO THIS COMPLETION UNTIL ALL INTERESTS HAVE BEEN CONSOLIDATED  
OR A NON-STANDARD UNIT HAS BEEN APPROVED BY THE DIVISION



**OPERATOR CERTIFICATION**

I hereby certify the the information contained herein is true and complete to the best of my knowledge and belief.

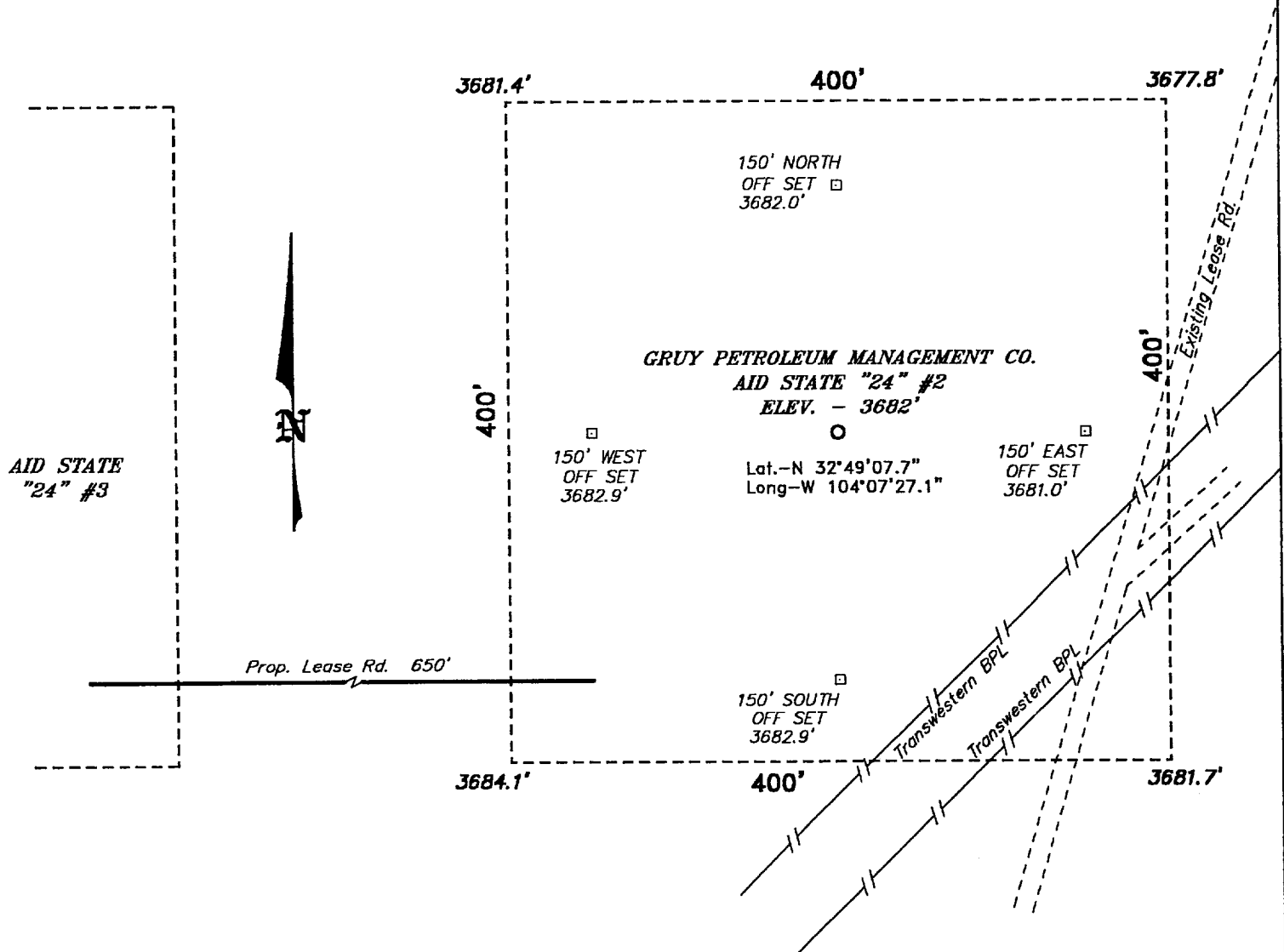
*Zeno Farris*  
Signature  
Zeno Farris  
Printed Name  
Mgr., Ops. Admin.  
Title  
4-2-01  
Date

**SURVEYOR CERTIFICATION**

I hereby certify that the well location shown on this plat was plotted from field notes of actual surveys made by me or under my supervision, and that the same is true and correct to the best of my belief.

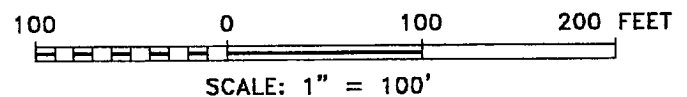
March 22, 2001  
Date Surveyed  
Signature of Gary L. Jones  
Professional  
7977  
No. 1250  
Certification  
BASIN SURVEYS

**SECTION 24, TOWNSHIP 17 SOUTH, RANGE 28 EAST, N.M.P.M.,  
EDDY COUNTY, NEW MEXICO.**



**Directions to Location:**

FROM THE JUNCTION OF US HWY 82 & CO. RD.  
209, GO EAST ON US HWY 82 FOR APPROX. 1 MILE  
TO A LEASE ROAD; THENCE NORTH ON LEASE ROAD  
TO A "Y", GO RIGHT AT "Y" FOR APPROX. 3500  
FEET; THENCE EAST 1000 FEET; THENCE NORTH FOR  
1500 FEET TO A POINT ON THE SOUTHEAST CORNER  
OF THE PROPOSED WELL PAD.



**GRUY PETROLEUM MANAGEMENT CO.**

REF: Aid State "24" No. 2 / Well Pad Topo

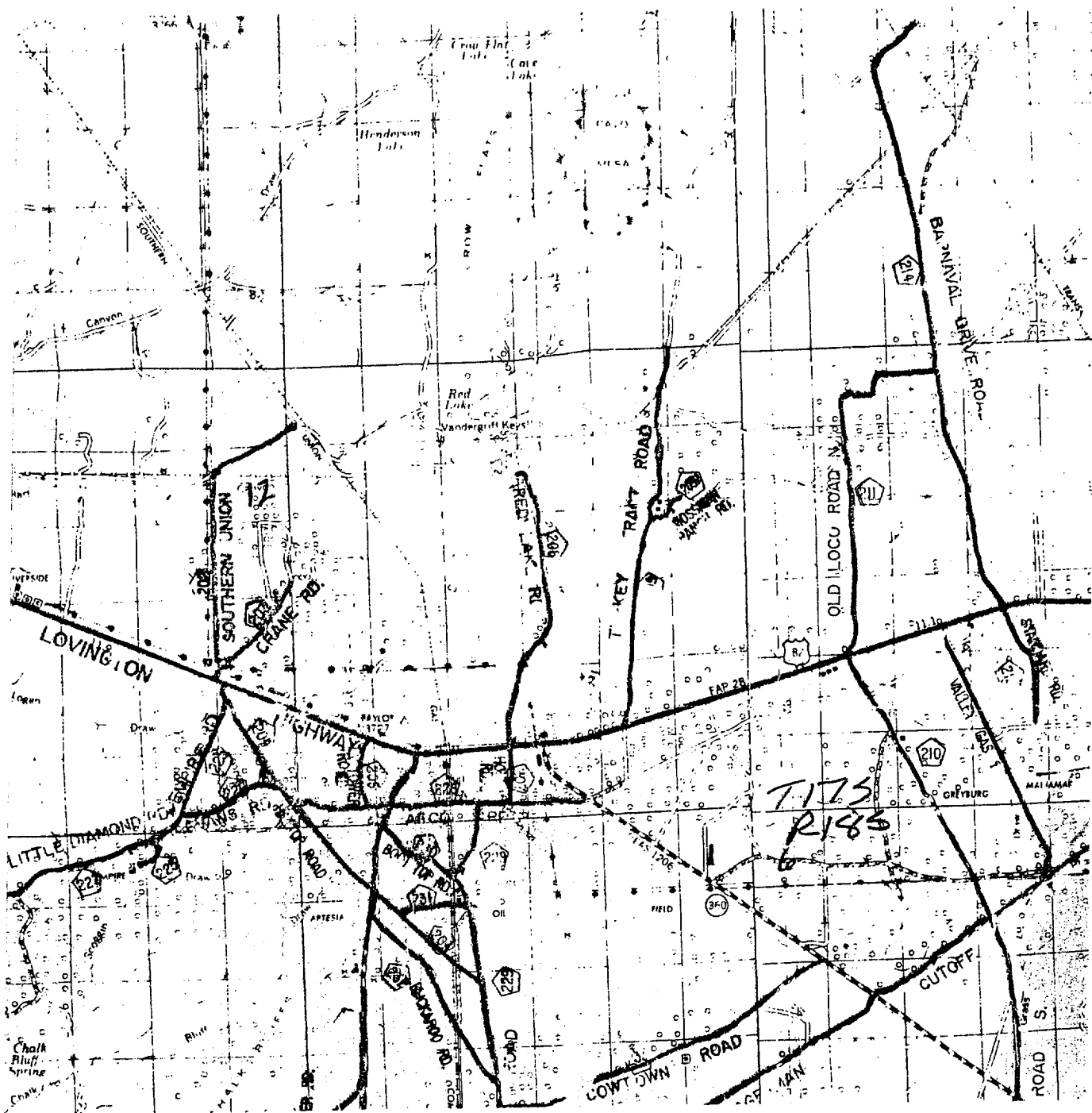
THE AID STATE "24" No. 2 LOCATED 1750' FROM  
THE SOUTH LINE AND 850' FROM THE EAST LINE OF  
SECTION 24, TOWNSHIP 17 SOUTH, RANGE 28 EAST,  
N.M.P.M., EDDY COUNTY, NEW MEXICO.

**BASIN SURVEYS** P.O. BOX 1786—HOBBS, NEW MEXICO

W.O. Number: 1250	Drawn By: K. GOAD
-------------------	-------------------

Survey Date: 03-22-2001 | Sheet 1 of 1 Sheets





AID STATE "24" #2

Located at 1750' FSL and 850' FEL  
Section 24, Township 17 South, Range 28 East,  
N.M.P.M., Eddy County, New Mexico.

**basin**  
**surveys**  
focused on excellence

P.O. Box 1786  
1120 N. West County Rd.  
Hobbs, New Mexico 88241  
(505) 393-7316 - Office  
(505) 392-3074 - Fax

W.O. Number: 1250AA - KJG CD#3

Survey Date: 03-22-2001

Scale: 1" = 2 MILES

Date: 03-26-2001

**GRUY PETROLEUM**  
**MANAGEMENT**  
**COMPANY**