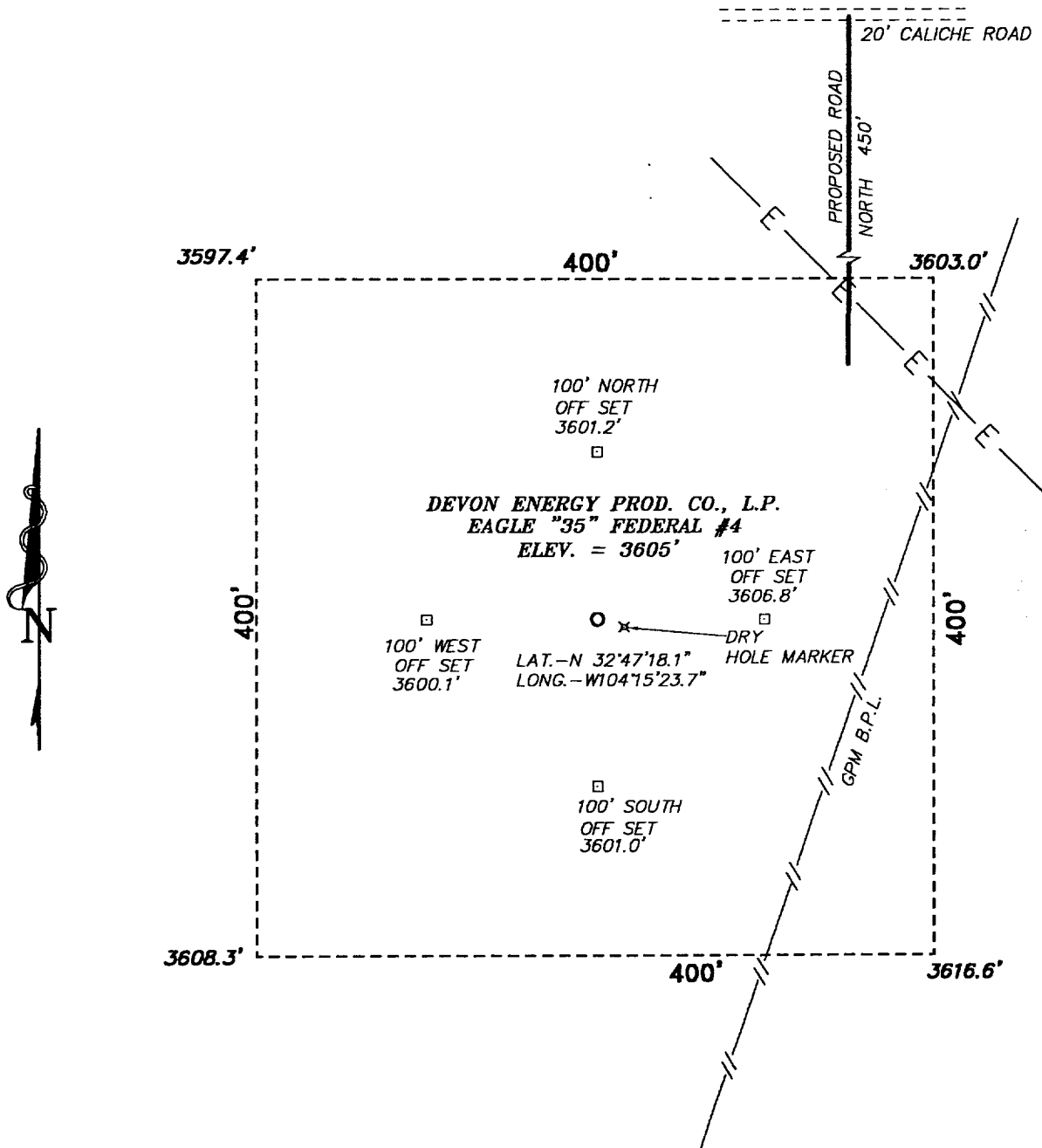
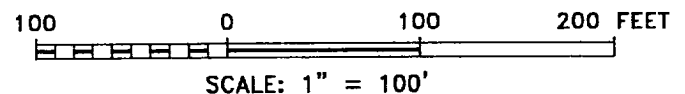


**SECTION 35, TOWNSHIP 17 SOUTH, RANGE 27 EAST, N.M.P.M.,
EDDY COUNTY, NEW MEXICO.**



FROM THE INTERSECTION OF U.S. HWY. 82
AND COUNTY RD #225 GO SOUTH ON 225
1.5 MILES TO LEASE ROAD GO WEST ON
LEASE ROAD 0.8 MILES THEN SOUTH 450'
FEET TO LOCATION.



DEVON ENERGY PROD. CO., L.P.

REF: EAGLE "35" FEDERAL #4 / Well Pad Topo

EAGLE "35" FEDERAL # 4 LOCATED 1800' FROM THE
SOUTH LINE AND 430' FROM THE WEST LINE OF
SECTION 35, TOWNSHIP 17 SOUTH, RANGE 27 EAST,
N.M.P.M., EDDY COUNTY, NEW MEXICO.

BASIN SURVEYS P.O. BOX 1786-HOBBS, NEW MEXICO

W.O. Number: 1093-1 Drawn By: **JAMES PRESLEY**

Date: 02/16/01 Disk: JLP #1 - DEV1093A-2

Survey Date: 02/13/01

Sheet 1 of 1 Sheets