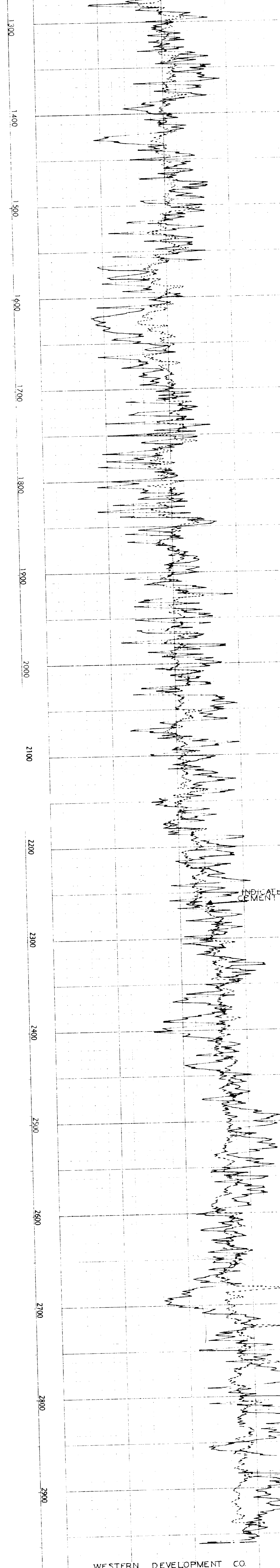


COMPANY: WESTERN DEVELOPMENT COMPANY WELL: LEONARD FEDERAL # 2 FIELD: GRAYBERG JACKSON LOCATION: EDDY COUNTY: EDDY STATE: NEW MEXICO	COMPANY: WESTERN DEVELOPMENT COMPANY		Well Location
	WELL: LEONARD FEDERAL NO. 2		
	FIELD: GRAYBERG JACKSON		
	LOCATION: 1980' FWL, 660' FWL, SEC. 33, 17S - 29E		
COUNTY: EDDY		STATE: N. MEX.	
LOG ZERO: CABLE TOOL FLOOR		ELEV. 3554	
DRLG. ZERO: CABLE TOOL FLOOR		ELEV. 3554	
PERM. DATUM: TOP 5 1/2" CSG.		ELEV. 3551	

TYPE OF LOG	C. T.
RUN NO.	1-W
DATE	9-13-58
TOTAL DEPTH (DRILLER)	3011
EFFECTIVE DEPTH (DRILLER)	3039
TOP OF LOGGED INTERVAL	2500
BOTTOM OF LOGGED INTERVAL	2500
TYPE OF FLUID IN HOLE	WATER
FLUID LEVEL	1200
MAXIMUM RECORDED TEMP.	
SOURCE STRENGTH & TYPE	
SOURCE SPACING - IN.	
DETECTOR TYPE	
DETECTOR CLASS	
LENGTH OF MEAS. DEVICE - IN.	
O.D. OF INSTRUMENT - IN.	3 5/8
TIME CONSTANT - SECONDS	2
LOGGING SPEED FT./MIN	80
STATISTICAL VARIATION - IN.	
SENSITIVITY REFERENCE	COPELAND
RECORDED BY	HANSON
WITNESSED BY	

WELL RECORD						
RUN	BIT SIZE	CASING	WT.-LB.	FROM WELL RECORD	TO	FROM LOG
1	10	3 5/8		SURF.	TO 311	SURF. TO
1	8	5 1/2	11	SURF.	TO 3011	SURF. TO 3022
				TO		TO
				TO		TO
				TO		TO

REMARKS OR OTHER DATA



WESTERN DEVELOPMENT CO.
 LEONARD FEDERAL # 2
 GRAYBERG JACKSON