

UNITED STATES  
DEPARTMENT OF THE INTERIOR  
GEOLOGICAL SURVEY

## APPLICATION FOR PERMIT TO DRILL, DEEPEN, OR PLUG BACK

## 1a. TYPE OF WORK

DRILL ☒DEEPEN ☐PLUG BACK ☐

## b. TYPE OF WELL

OIL  
WELL ☒GAS  
WELL ☐

OTHER

SINGLE  
ZONE ☒MULTIPLE  
ZONE ☐

## 2. NAME OF OPERATOR

TENNECO OIL COMPANY

## 3. ADDRESS OF OPERATOR

Box 1031 MIDLAND, TEXAS 79701

## 4. LOCATION OF WELL (Report location clearly and in accordance with any State requirements.)\*

At surface

1980' FNL 660 FEL SEC 17; T-17-S; R 29E UNIT H

At proposed prod. zone

## 14. DISTANCE IN MILES AND DIRECTION FROM NEAREST TOWN OR POST OFFICE\*

## 15. DISTANCE FROM PROPOSED\*

LOCATION TO NEAREST  
PROPERTY OR LEASE LINE, FT.  
(Also to nearest drilg. unit line, if any)

## 18. DISTANCE FROM PROPOSED LOCATION\*

TO NEAREST WELL, DRILLING, COMPLETED,  
OR APPLIED FOR, ON THIS LEASE, FT.

## 21. ELEVATIONS (Show whether DF, RT, GR, etc.)

3596.1 GR.

## 23.

## PROPOSED CASING AND CEMENTING PROGRAM

SIZE OF HOLE	SIZE OF CASING	WEIGHT PER FOOT	SETTING DEPTH	QUANTITY OF CEMENT
11 7 7/8"	8 5/8 4 1/2	24 10.5	360 TD	SUFF to CIRCULATE SUFF to BRING top to 2000'

## 5. LEASE DESIGNATION AND SERIAL NO.

NM 0397623

## 6. IF INDIAN, ALLOTTEE OR TRIBE NAME

## 7. UNIT AGREEMENT NAME

## 8. FARM OR LEASE NAME

FOLK FEDERAL

## 9. WELL NO.

2

## 10. FIELD AND POOL, OR WILDCAT

GRAYBUSH JACKSON

11. SEC. T., R., M., OR BLK.  
AND SURVEY OR AREA

17-17S-29E

## 12. COUNTY OR PARISH

Eddy

## 13. STATE

N.M.

## 16. NO. OF ACRES IN LEASE

426

17. NO. OF ACRES ASSIGNED  
TO THIS WELL

40

## 19. PROPOSED DEPTH

2000

## 20. ROTARY OR CABLE TOOLS

ROTARY

## 22. APPROX. DATE WORK WILL START\*

Upon Approval

RECEIVED  
JAN - 7 1969  
U. S. GEOLOGICAL SURVEY  
ARTESIA, NEW MEXICO

RECEIVED

JAN 8 1969

O. C. C.  
ARTESIA, OFFICE

IN ABOVE SPACE DESCRIBE PROPOSED PROGRAM: If proposal is to deepen or plug back, give data on present productive zone and proposed new productive zone. If proposal is to drill or deepen directionally, give pertinent data on subsurface locations and measured and true vertical depths. Give blowout preventer program, if any.

## 24.

SIGNED

Monroe R. Karsen

TITLE

SR Prod Clerk

DATE

1-3-69

(This space for Federal or State office use)

## PERMIT NO.

APPROVED BY  
CONDITIONS OF APPROVAL, IF ANY:THIS APPROVAL IS RESCINDED  
ARE NOT COME  
EXPIRES APR 7 - 1969

DATE

R. L. BECKMA

\*See Instructions On Reverse Side

**NEW MEXICO OIL CONSERVATION COMMISSION  
WELL LOCATION AND ACREAGE DEDICATION PLAT**

Form C-102  
Supersedes C-128  
Effective 1-1-65

All distances must be from the outer boundaries of the Section.

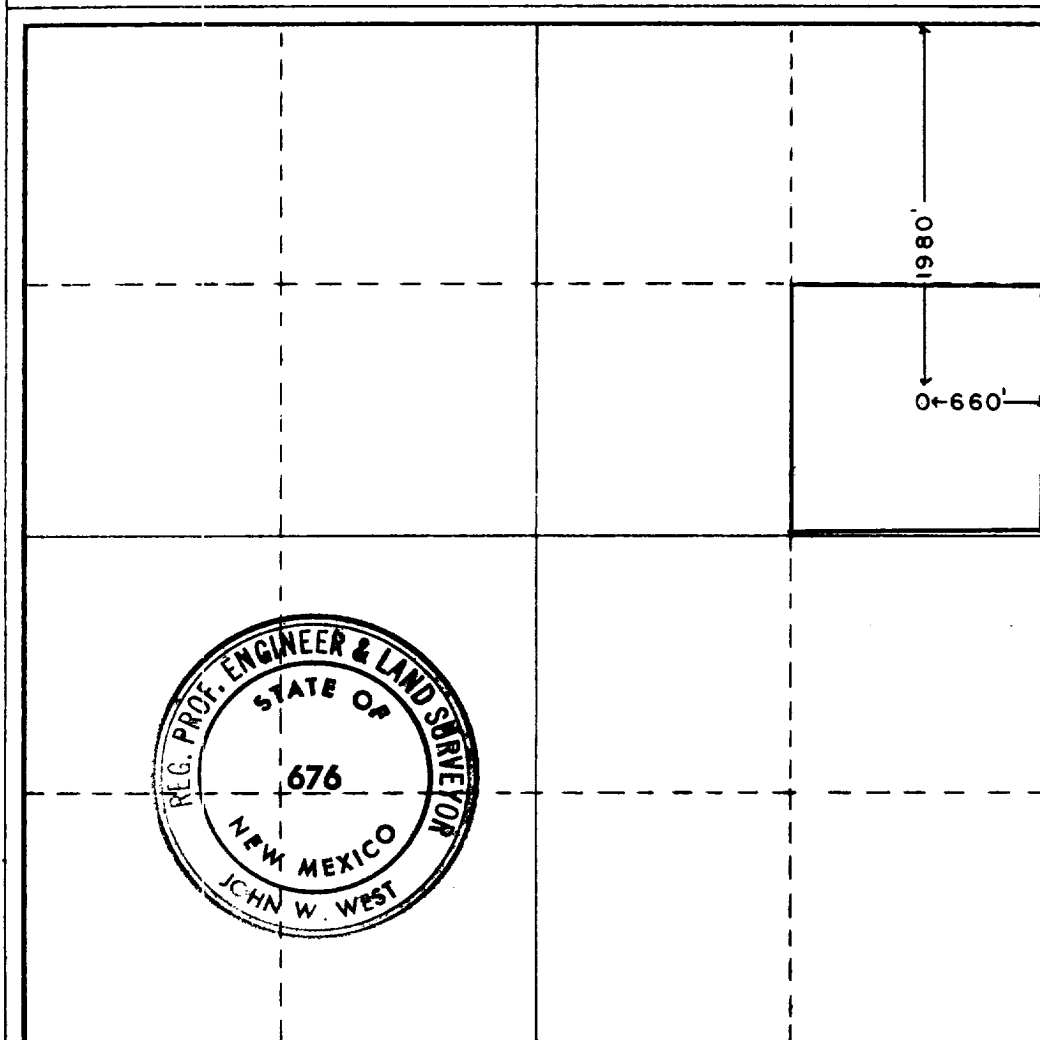
Operator <b>TENNECO OIL COMPANY</b>			Lease <b>FOLK FEDERAL</b>		Well No. <b>2</b>
Unit Letter <b>H</b>	Section <b>17</b>	Township <b>17 SOUTH</b>	Range <b>29 EAST</b>	County <b>EDDY</b>	
Actual Footage Location of Well: <b>1980</b> feet from the <b>NORTH</b> line and <b>660</b> feet from the <b>EAST</b> line					
Ground Level Elev. <b>3596.1</b>	Producing Formation <b>GRAYBURG SAN ANTONIO</b>		Pool <b>UNDERS. GRAYBURG JACKSON</b>		Dedicated Acreage: <b>40</b> Acres

1. Outline the acreage dedicated to the subject well by colored pencil or hachure marks on the plat below.
2. If more than one lease is dedicated to the well, outline each and identify the ownership thereof (both as to working interest and royalty).
3. If more than one lease of different ownership is dedicated to the well, have the interests of all owners been consolidated by communitization, unitization, force-pooling, etc?

☐ Yes    ☐ No    If answer is "yes," type of consolidation \_\_\_\_\_

If answer is "no," list the owners and tract descriptions which have actually been consolidated. (Use reverse side of this form if necessary.) \_\_\_\_\_

No allowable will be assigned to the well until all interests have been consolidated (by communitization, unitization, forced-pooling, or otherwise) or until a non-standard unit, eliminating such interests, has been approved by the Commission.



**CERTIFICATION**

I hereby certify that the information contained herein is true and complete to the best of my knowledge and belief.

Name Almond K. Karasch  
 Position Sr. Prod. Clerk  
 Company TENNECO Oil Co  
 Date 1-3-69

I hereby certify that the well location shown on this plat was plotted from field notes of actual surveys made by me or under my supervision, and that the same is true and correct to the best of my knowledge and belief.

Date Surveyed  
**12-31-1968**

Registered Professional Engineer  
and/or Land Surveyor

John W. West  
 Certificate No. **676**



