

UNITED STATES
DEPARTMENT OF THE INTERIOR
GEOLOGICAL SURVEY

30-015-22530

5. LEASE DESIGNATION AND SERIAL NO.
LC-029418-A

6. IF INDIAN, ALLOTTEE OR TRIBE NAME

7. UNIT AGREEMENT NAME

Skelly Unit

8. FARM OR LEASE NAME

9. WELL NO.

148

10. FIELD AND POOL, OR WILDCAT

Seven Rivers

11. SEC. T. R. M. OR PLK.
AND SURVEY OR AREA

14-17-31

12. COUNTY OR PARISH 13. STATE

Eddy

N.M.

APPLICATION FOR PERMIT TO DRILL, DEEPEN, OR PLUG BACK

1a. TYPE OF WORK

DRILL ☒

DEEPEN ☐

PLUG BACK ☐

b. TYPE OF WELL

OIL
WELL ☒

GAS
WELL ☐

OTHER

SINGLE
ZONE ☒

MULTIPLE
ZONE ☐

2. NAME OF OPERATOR

Getty Oil Company

3. ADDRESS OF OPERATOR

P. O. Box 730; Hobbs, New Mexico 88240

4. LOCATION OF WELL (Report location clearly and in accordance with any State requirements.)

At surface

At proposed prod. zone

660 FSL & 510 FEL
30 50

MAY - 4 1978

O.C.C.

14. DISTANCE IN MILES AND DIRECTION FROM NEAREST TOWN OR POST OFFICE*

5 miles Southwest of Maljamar, N.M.

ARTESIA, OFFICE

15. DISTANCE FROM PROPOSED*

LOCATION TO NEAREST
PROPERTY OR LEASE LINE, FT.
(Also to nearest drg. unit line, if any)

510

16. NO. OF ACRES IN LEASE

4040

17. NO. OF ACRES ASSIGNED
TO THIS WELL

40

18. DISTANCE FROM PROPOSED LOCATION*
TO NEAREST WELL, DRILLING, COMPLETED,
OR ABANDONED, ON THIS LEASE, FT.

150

19. PROPOSED DEPTH

2800

20. ROTARY OR CABLE TOOLS

Rotary

21. ELEVATIONS (Show whether DF, RT, GR, etc.)

3895 GR

22. APPROX. DATE WORK WILL START*

July, 1978

23. PROPOSED CASING AND CEMENTING PROGRAM

SIZE OF HOLE	SIZE OF CASING	WEIGHT PER FOOT	SETTING DEPTH	QUANTITY OF CEMENT
12 1/2	8 5/8 K-55	24	700	290 SXS
7 7/8	5 1/2 K-55	14	2800	*

* To be determined by Baliper log

1. The geologic surface formation is Triassic redbeds with a coverage of Quaternary sand dunes.

2. The estimated tops of important geologic markers are:

- (a) anhydrite - 400'
- (b) salt top - 600'
- (c) salt base - 1600'
- (d) Yates - 1750'
- (e) Seven Rivers 2100'

3. The estimated depths for oil and gas production will be from 2100' to TD.

4. The above casing program will be new casing.

5. See reverse side for control equipment schematics.

6. Will use approximately 500 bbls. total of 10.5% brine water from surface to TD.

7. A sub will be on the floor @ all times w/full opening valve.

8. A possibility of coring from 2100 to T.D. Decision to be made at a later date. Logging will be CNL-FDC and DLL-RXO. Will run temperature survey to determine cement top behind 5 1/2 casing.

9. No abnormal pressures or temperatures or H2S gas expected.

10. Anticipate starting in first half of 3rd quarter 1978 w/a duration of 5 days.

RECEIVED

MAR 7 - 1978

U.S. GEOLOGICAL SURVEY
ARTESIA, NEW MEXICO

IN A CASE WHERE PROPOSED PROGRAM IS TO DRILL OR DEEPEN OR PLUG BACK, THE DATA ON PROPOSED PRODUCTION ZONE AND DEPTH AND PROPOSED
ZONES IF PROPOSED TO DRILL OR DEEPEN DIRECTIONALLY, THE PERTINENT DATA ON SURFACE LOCATION AND NEAREST AND TRUE VERIFIED (SEE 11) MUST
BE SUBMITTED WITH THIS APPLICATION.

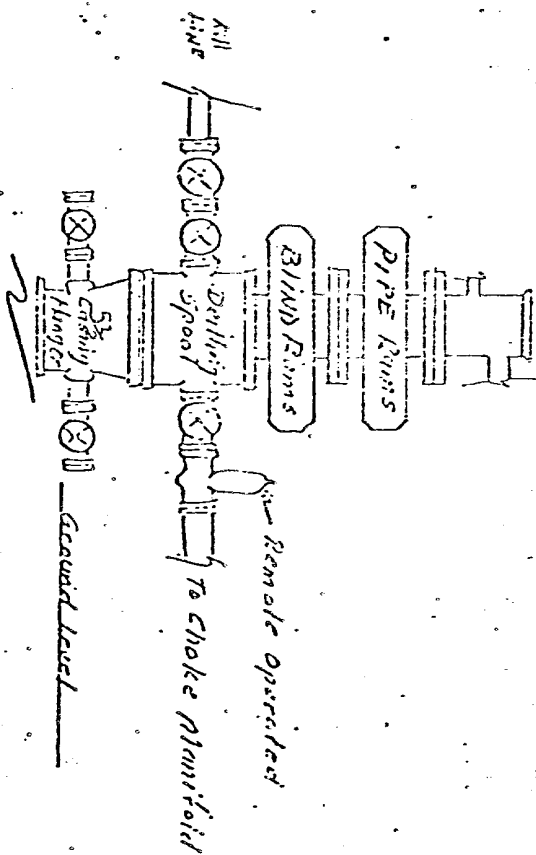
APPROVED BY [Signature] TITLE Area Superintendent DATE

(This space for Federal or State office use)

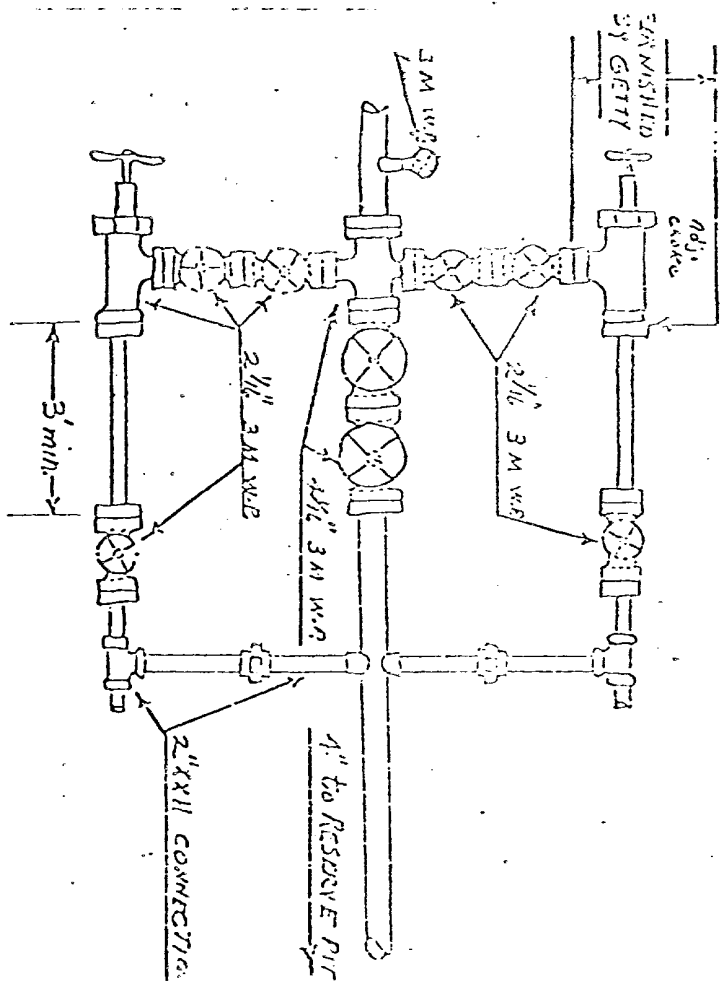
APPROVED BY [Signature] TITLE ACTING DISTRICT ENGINEER DATE MAY 3 - 1978

APPROVED BY [Signature] TITLE ACTING DISTRICT ENGINEER DATE MAY 3 - 1978

Rotating Head, If Necessary,
Furnished By Getty



All 3000 psi W.P.



MANIFOLD SHOWN IS MINIMUM THAT IS ACCEPTABLE

Corrected

197

N MEXICO OIL CONSERVATION COMMISS
WELL LOCATION AND ACREAGE DEDICATION PLAT

Form C-102
Supersedes C-128
Effective 1-1-65

All distances must be from the outer boundaries of the Section.

Operator GETTY OIL COMPANY			Lease Skelly Unit		Well No. 148
Unit Letter "p"	Section 14	Township 17 South	Range 31 East	County Eddy	
Actual Footage Location of Well: 560 feet from the South line and 560 feet from the East line					
Ground Level Elev. 3895	Producing Formation 7-Rivers		Pool 245 Fren 7 1/2 1978		Dedicated Acreage: 40 Acres

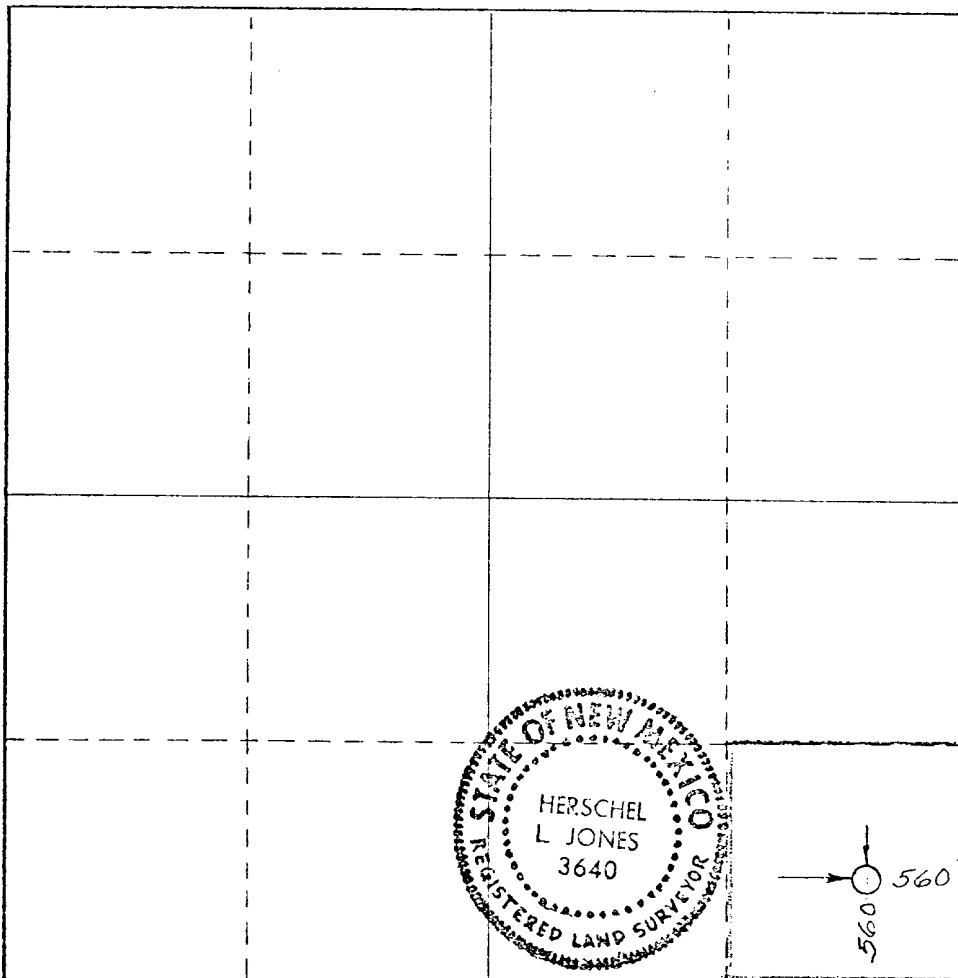
1. Outline the acreage dedicated to the subject well by colored pencil or hatchure marks on the plat below.
2. If more than one lease is dedicated to the well, outline each and identify the ownership thereof (both as to working interest and royalty).
3. If more than one lease of different ownership is dedicated to the well, have all interests of all owners been consolidated by communitization, unitization, force-pooling, etc?

☐ Yes ☐ No If answer is "yes," type of consolidation _____

If answer is "no," list the owners and tract descriptions which have actually been consolidated. (Use reverse side of this form if necessary.) _____

No allowable will be assigned to the well until all interests have been consolidated (by communitization, unitization, forced-pooling, or otherwise) or until a non-standard unit, eliminating such interests, has been approved by the Commission.

APR 11 1978
NEW MEXICO
ARTESIA, NEW MEXICO



CERTIFICATION

I hereby certify that the information contained herein is true and complete to the best of my knowledge and belief.

Dale R. Crockett

Name

Dale R. Crockett

Position

Area Superintendent

Company

Getty Oil Company

Date

4-4-78

I hereby certify that the well location shown on this plat was plotted from field notes of actual surveys made by me or under my supervision, and that the same is true and correct to the best of my knowledge and belief.

Date Surveyed

4/4/78

Registered Professional Engineer
and/or Land Surveyor

Herschel L Jones

Certificate No.

3640

0 330 660 990 1320 1650 1980 2310 2640 2970 3300 3630 3960 4290 4620 4950 5280 5610 5940 6270 6600

NEW MEXICO OIL CONSERVATION COMMISSION
WELL LOCATION AND ACREAGE DEDICATION PLAT

Form C-102
Supersedes C-128
Effective 1-1-65

All distances must be from the outer boundaries of the Section.

Operator GETTY OIL COMPANY			Lease Skelly Unit		Well No. 148
Unit Letter P	Section 14	Township 17 South	Range 31 East	County Eddy	
Actual Footage Location of Well: 660 feet from the South line and 510 feet from the East line					
Ground Level Elev. 3895	Producing Formation 7-Rivers		Pool Fren	Dedicated Acreage: 40 Acres	

1. Outline the acreage dedicated to the subject well by colored pencil or hachure marks on the plat below.
2. If more than one lease is dedicated to the well, outline each and identify the ownership thereof (both as to working interest and royalty).
3. If more than one lease of different ownership is dedicated to the well, have the interests of all owners been consolidated by communitization, unitization, force-pooling, etc?

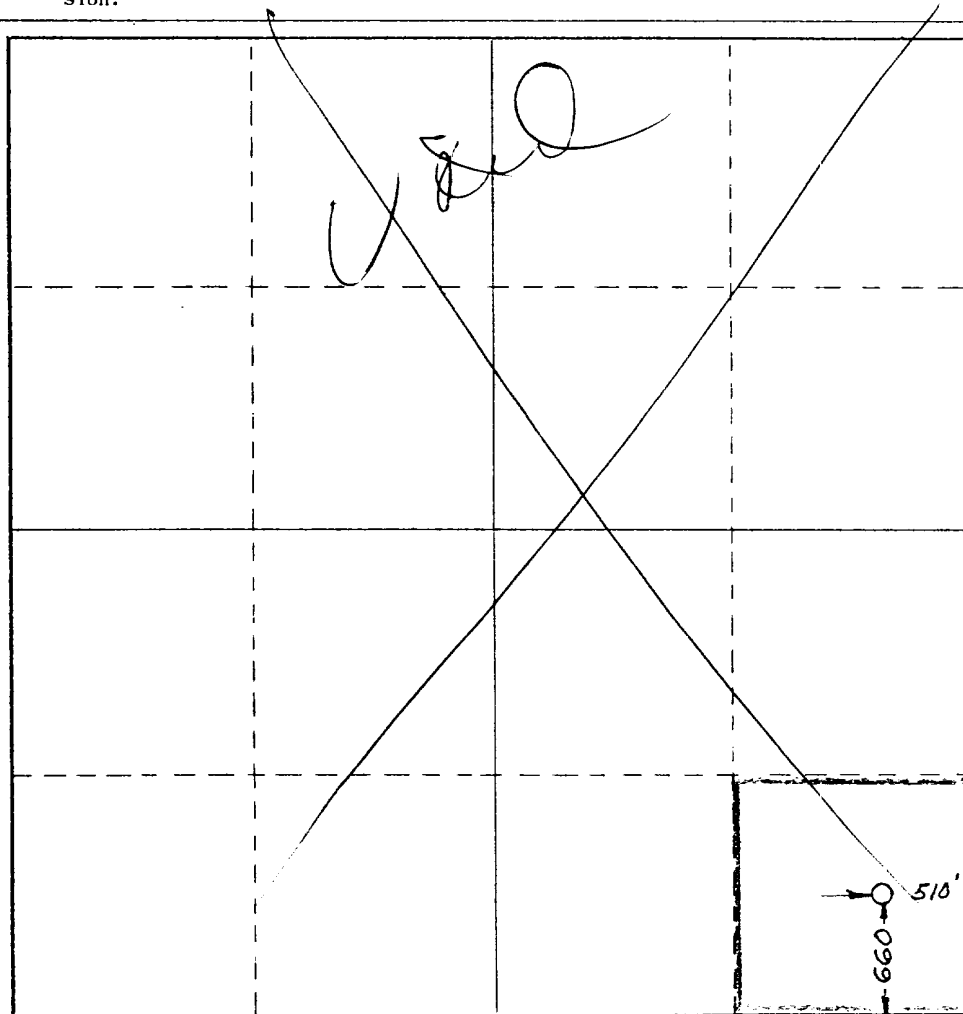
☐ Yes ☐ No If answer is "yes," type of consolidation _____

If answer is "no," list the owners and tract descriptions which have actually been consolidated. (Use reverse side of this form if necessary.) _____

No allowable will be assigned to the well until all interests have been consolidated (by communitization, unitization, forced-pooling, or otherwise) or until a non-standard unit, eliminating such interests, has been approved by the Commission.

RECEIVED
MAR 7 - 1978

U.S. GEOLOGICAL SURVEY
ARTESIA, NEW MEXICO



CERTIFICATION

I hereby certify that the information contained herein is true and complete to the best of my knowledge and belief.

Dale R. Crockett

Name
Dale R. Crockett

Position
Area Superintendent

Company
Getty Oil Company

Date
March 6, 1978

I hereby certify that the well location shown on this plat was plotted from field notes of actual surveys made by me or under my supervision, and that the same is true and correct to the best of my knowledge and belief.

Date Surveyed
February 9, 1978

Registered Professional Engineer
and/or Land Surveyor

Herschel L. Jones

Certificate No. **3840**

