

UNITED STATES
DEPARTMENT OF THE INTERIOR
GEOLOGICAL SURVEY

APPLICATION FOR PERMIT TO DRILL, DEEPEN, OR PLUG BACK

1a. TYPE OF WORK

DRILL ☒DEEPEN ☐PLUG BACK ☐

b. TYPE OF WELL

OIL
WELL ☒GAS
WELL ☐

OTHER

SINGLE
ZONE ☒MULTIPLE
ZONE ☐

2. NAME OF OPERATOR

Marbob Energy Corporation ✓

3. ADDRESS OF OPERATOR

P.O. Drawer 217, Artesia, N.M. 88210

4. LOCATION OF WELL (Report location clearly and in accordance with any State requirements.)*

At surface

2565' FSL 2465 FEL

At proposed prod. zone

Same

14. DISTANCE IN MILES AND DIRECTION FROM NEAREST TOWN OR POST OFFICE

20 air miles east of Artesia, N.M. 88210

15. DISTANCE FROM PROPOSED*

LOCATION TO NEAREST

PROPERTY OR LEASE LINE, FT.

(Also to nearest drlg. unit line, if any)

2465'

18. DISTANCE FROM PROPOSED LOCATION*

TO NEAREST WELL, DRILLING, COMPLETED,
OR APPLIED FOR, ON THIS LEASE, FT.

700'

16. NO. OF ACRES IN LEASE

1480

19. PROPOSED DEPTH

3450'

17. NO. OF ACRES ASSIGNED
TO THIS WELL

40

20. ROTARY OR CABLE TOOLS

Rotary

21. ELEVATIONS (Show whether DF, RT, GR, etc.)

3617.5' GR

22. APPROX. DATE WORK WILL START*

6/15/84

23.

PROPOSED CASING AND CEMENTING PROGRAM

SIZE OF HOLE	SIZE OF CASING	WEIGHT PER FOOT	SETTING DEPTH	QUANTITY OF CEMENT
12 1/4"	8 5/8"	24#	350'	Sufficient to circulate
7 7/8"	5 1/2"	15.50#	3450'	450 sax, to base of salt

Pay zone will be selectively perforated & stimulated as needed for optimum production.

Attached are: 1. Location & acreage dedication plat
2. Supplemental drilling data
3. Surface use plan

Post ID-1
7-20-84
APF + BK

IN ABOVE SPACE DESCRIBE PROPOSED PROGRAM: If proposal is to deepen or plug back, give data on present productive zone and proposed new productive zone. If proposal is to drill or deepen directionally, give pertinent data on subsurface locations and measured and true vertical depths. Give blowout preventer program, if any.

24.

SIGNED

(This space for Federal or State office use)

TITLE

Production Clerk

DATE

5/30/84

PERMIT NO.

APPROVAL DATE

APPROVED BY

TITLE

CARLSBAD RESOURCE AREA

DATE

7-16-84

CONDITIONS OF APPROVAL, IF ANY:

APPROVAL SUBJECT TO
GENERAL REQUIREMENTS AND
SPECIAL STIPULATIONS
ATTACHED

*See Instructions On Reverse Side

NEW MEXICO OIL CONSERVATION COMMISSION
WELL LOCATION AND ACREAGE DEDICATION PLAT

Form C-102
Supersedes C-128
Effective 1-1-65

All distances must be from the outer boundaries of the Section

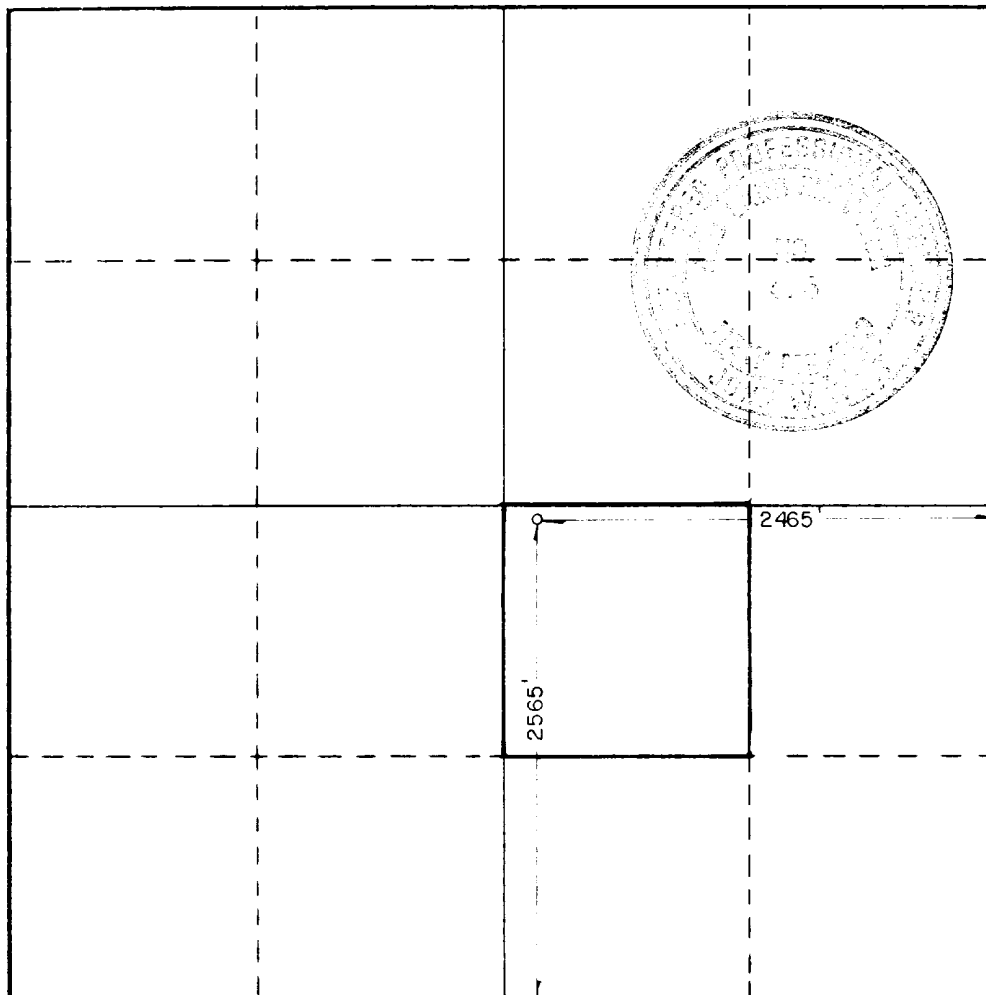
Operator MARBOB ENERGY CORP.			Lease M DODD "B"		Well No. 43
Unit Letter J	Section 14	Township 17S	Range 29E	County EDDY	
Actual Footage Location of Well: 2565 feet from the SOUTH line and 2465 feet from the EAST line					
Ground Level Elev. 3617.5	Producing Formation San Andres	Pool Grayburg Jackson SR-Q-G-SA		Dedicated Acreage: 40 Acres	

1. Outline the acreage dedicated to the subject well by colored pencil or hachure marks on the plat below.
2. If more than one lease is dedicated to the well, outline each and identify the ownership thereof (both as to working interest and royalty).
3. If more than one lease of different ownership is dedicated to the well, have the interests of all owners been consolidated by communitization, unitization, force-pooling, etc?

☐ Yes ☐ No If answer is "yes," type of consolidation _____

If answer is "no," list the owners and tract descriptions which have actually been consolidated. (Use reverse side of this form if necessary.) _____

No allowable will be assigned to the well until all interests have been consolidated (by communitization, unitization, forced-pooling, or otherwise) or until a non-standard unit, eliminating such interests, has been approved by the Commission.



CERTIFICATION

I hereby certify that the information contained herein is true and complete to the best of my knowledge and belief.

Carolyn Orris

Name
Carolyn Orris

Position
Production Clerk

Company
Marbob Energy Corp.

Date
5/24/84

I hereby certify that the well location shown on this plat was plotted from field notes of actual surveys made by me or under my supervision, and that the same is true and correct to the best of my knowledge and belief.

Date Surveyed
5/22/84

Registered Professional Engineer
and/or Land Surveyor

Ronald J. Eidson

Certificate No. JOHN W. WEST, 676
RONALD J. EIDSON, 3239

REGAN OFFSHORE INTERNATIONAL, INC.

Torrance,

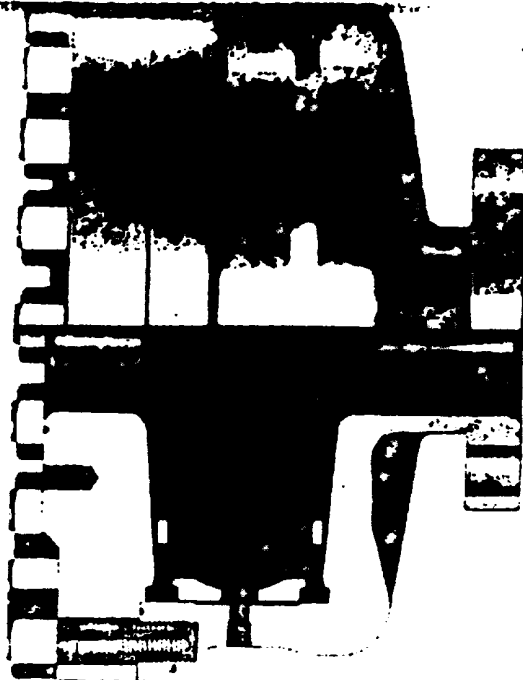
ANNULAR

REGAN BLOWOUT PREVENTERS

The Regan Torus Blowout Preventer is used primarily on production and workover rigs for well control up to 3000 PSI working pressure

DESIGN FEATURES

- a. The Torus Preventer is designed for minimum height to facilitate its use with production and workover rigs.
- b. The rubber packer will conform to any obstruction in the well bore. Sealing ability is not affected by minor damage to the inner bore.
- c. The packer will seal on open hole at full working pressure.
- d. The dual packer design increases the reliability of the preventer since the outer rubber is never exposed to the well bore. Under ordinary service, the outer packer is rarely replaced.



TORUS BLOWOUT PREVENTER
PATENTED

SPECIFICATIONS

Nominal Size	Test Pressure (psi)	DIMENSIONS (in.)				Weight (lbs.)	End Flanges (I)	H/RX King Grooves	Side Outlet
		Outside Diameter	Thru Bore	Overall Height					
6	1225	12 1/4	7 1/4	38 1/4		1400	2000	15	None
8	600	14 1/4	9 1/4	41 1/4		1500	2000	15	2" I.P.
10	225	16 1/4	11 1/4	45		1600	2000	15	None

1. Bottom Flange
2. Top Flange
3. Side Flange
4. Side Flange
5. Side Flange
6. Side Flange
7. Side Flange
8. Side Flange
9. Side Flange
10. Side Flange

SUP Exhibit E
REGAN BLOWOUT PREVENTER
Marbob Energy Corporation
Well #43 M. Dodd "B" Federal
NW 1/4 Sec. 14-17S-29E

SUPPLEMENTAL DRILLING DATA

MARBOB ENERGY CORPORATION
WELL #43 M. DODD "B" FEDERAL
NW1/4SE1/4 SECTION 14-17-29E
EDDY COUNTY, NEW MEXICO
(DEVELOPMENT WELL)

1. SURFACE FORMATION: Quaternary.

2. ESTIMATED TOPS OF GEOLOGIC MARKERS:

Salt	360'	Queen	1815'
Base Salt	780'	Grayburg	2140'
Yates	930'	San Andres	2510'
Seven Rivers	1145'	Glorietta	3900'

3. ANTICIPATED POROSITY ZONES:

Water	Above 180'
Oil	2350 - 3450'

4. CASING DESIGN:

SIZE	INTERVAL	WEIGHT	GRADE	JOINT	CONDITION
8 5/8"	0-350'	24.0#	K-55	STC	New
5 1/2"	0-3450'	15.5#	K-55	STC	New

5. SURFACE CONTROL EQUIPMENT: A double ram-type or ~~annular~~ BOP will be used. (See diagram attached as Exhibit "E")

6. CIRCULATING MEDIUM:

0 - 350'	Fresh water mud with gel or lime as needed for viscosity control.
350'- 3450-	Salt water mud, conditioned as necessary for control of viscosity and water loss or gain.

7. AUXILIARY EQUIPMENT: Drill string safety valve.

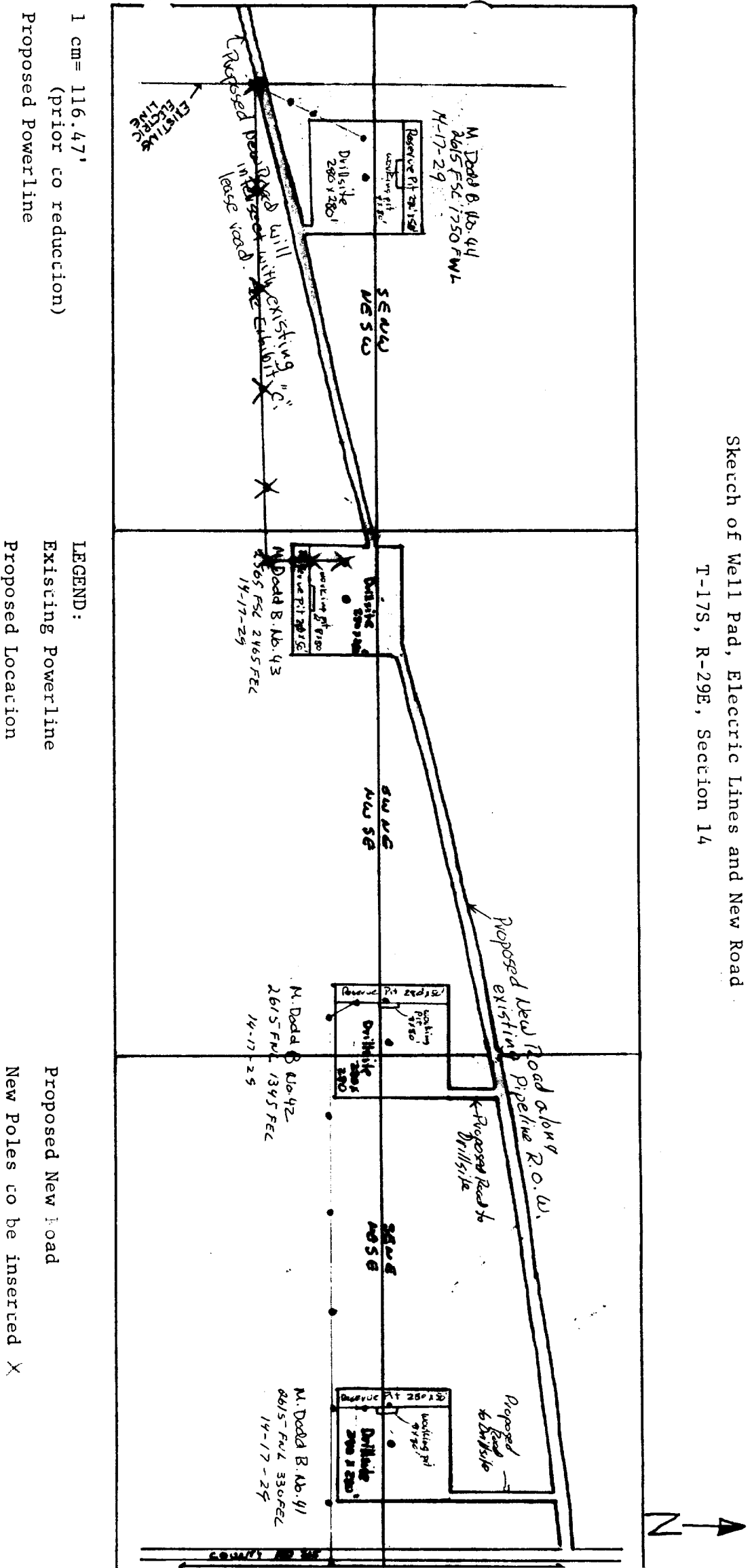
8. LOGGING PROGRAM: CNL-FDC W/GR Log will be run to TD.

9. ABNORMAL PRESSURES, TEMPERATURES OR GASES: A water flow may be encountered in the salt section.

10. ANTICIPATED STARTING DATE: It is planned that operations will commence about June 15, 1984. Duration of drilling, testing and completion operations should be one to four weeks.

EXHIBIT "D"

Sketch of Well Pad, Electric Lines and New Road
T-17S, R-29E, Section 14



1

2

3

4

5

6