

Submit to Appropriate
District Office
State Lease - 6 copies
Fee Lease - 5 copies

State of New Mexico
Energy, Minerals and Natural Resources Department

Form C-101
Revised 1-1-89

OIL CONSERVATION DIVISION

P.O. Box 2088
Santa Fe, New Mexico 87504-2088

DISTRICT I
P.O. Box 1980, Hobbs, NM 88240

DISTRICT II
P.O. Drawer DD, Artesia, NM 88210

DISTRICT III
1000 Rio Brazos Rd., Aztec, NM 87410

API NO. (assigned by OCD on New Wells)

30-015 27363

5. Indicate Type of Lease

STATE ☒

FEE ☐

6. State Oil & Gas Lease No.

APPLICATION FOR PERMIT TO DRILL, DEEPEN, OR PLUG BACK

1a. Type of Work:

DRILL ☒

RE-ENTER ☐

DEEPEN ☐

PLUG BACK ☐

b. Type of Well:

OIL
WELL ☒

GAS
WELL ☐

OTHER ☐

SINGLE
ZONE ☒

MULTIPLE
ZONE ☐

2. Name of Operator

Mack Energy Corporation ✓

3. Address of Operator

P.O. Box 1359, Artesia, NM 88211-1359

7. Lease Name or Unit Agreement Name

G-J West Coop Unit

8. Well No.

#118.

9. Pool name or Wildcat

Grayburg Jackson SR ON GB SA

4. Well Location
Unit Letter

C

: 990

Feet From The

North

Line and

2310

Feet From The

West

Line

Section

21

Township

17S

Range

29E

NMPM

Eddy

County

10. Proposed Depth

4600'

11. Formation

San Andres

12. Rotary or C.T.

Rotary

13. Elevations (Show whether DF, RT, GR, etc.)

3604.0 GR

14. Kind & Status Plug. Bond

Statewide Bond

15. Drilling Contractor

LaRue Drilling

16. Approx. Date Work will start

17. PROPOSED CASING AND CEMENT PROGRAM

SIZE OF HOLE	SIZE OF CASING	WEIGHT PER FOOT	SETTING DEPTH	SACKS OF CEMENT	EST. TOP
17 1/2"	13 3/8"	54.5#	125'	Circulate	
12 1/4"	8 5/8"	24#	800'	Circulate	
7 7/8"	5 1/2"	17#	4600'	Sufficiently attempt to circ.	

Mack Energy proposes to drill to 125', run 13 3/8" casing and cement. Drill to 800', run 8 5/8" casing and cement. Drill to 4600' and test San Andres Zone, run 5 1/2" casing and cement, put on production.

Note: On Production string, a fluid caliber will be run, will figure cement, with 25% excess, attempt to circulate.

IN ABOVE SPACE DESCRIBE PROPOSED PROGRAM: IF PROPOSAL IS TO DEEPEN OR PLUG BACK, GIVE DATA ON PRESENT PRODUCTIVE ZONE AND PROPOSED NEW PRODUCTIVE ZONE. GIVE BLOWOUT PREVENTER PROGRAM, IF ANY.

I hereby certify that the information above is true and complete to the best of my knowledge and belief.

SIGNATURE

Crissa D. Carter

TITLE Production Clerk

DATE 3/17/93

TYPE OR PRINT NAME

Crissa D. Carter

TELEPHONE NO. 748-1288

(This space for State Use)

APPROVED BY

Mark DeWitt

TITLE

Geologist

DATE

3-18-93

CONDITIONS OF APPROVAL, IF ANY:

APPROVAL VALID FOR 180 DAYS
EXPIRES 7-18-93
PERMIT UNDERWAY

Submit to Appropriate
District Office
State Lease - 4 copies
Fee Lease - 3 copies

State of New Mexico
Energy, Minerals and Natural Resources Department

Form C-102
Revised 1-1-89

OIL CONSERVATION DIVISION

P.O. Box 2088
Santa Fe, New Mexico 87504-2088

DISTRICT I

P.O. Box 1980, Hobbs, NM 88240

DISTRICT II

P.O. Drawer DD, Artesia, NM 88210

DISTRICT III

1000 Rio Brazos Rd., Aztec, NM 87410

WELL LOCATION AND ACREAGE DEDICATION PLAT

All Distances must be from the outer boundaries of the section

Operator MACK ENERGY CORPORATION			Lease G.J. WEST		Well No. 118
Unit Letter C	Section 21	Township 17 SOUTH	Range 29 EAST	County EDDY	
Actual Footage Location of Well: 990 feet from the NORTH line and 2310 feet from the WEST line					
Ground Level Elev. 3604.0'	Producing Formation San Andres		Pool Grayburg Jackson SR QN GB SA		Dedicated Acreage: 40 Acres

- Outline the acreage dedicated to the subject well by colored pencil or hatchure marks on the plat below.
- If more than one lease is dedicated to the well, outline each and identify the ownership thereof (both as to working interest and royalty).
- If more than one lease of different ownership is dedicated to the well, have the interest of all owners been consolidated by communitization, unitization, force-pooling, etc.?
☐ Yes ☐ No If answer is "yes" type of consolidation _____
If answer is "no" list of owners and tract descriptions which have actually been consolidated. (Use reverse side of this form necessary.)
No allowable will be assigned to the well unit all interests have been consolidated (by communitization, unitization, forced-pooling, otherwise) or until a non-standard unit, eliminating such interest, has been approved by the Division.

OPERATOR CERTIFICATION

I hereby certify the the information
contained herein is true and complete to the
best of my knowledge and belief.

Signature

Crissa D. Carter

Printed Name

Crissa D. Carter

Position

Production Clerk

Company

Mack Energy Corporation

Date

3/17/93

SURVEYOR CERTIFICATION

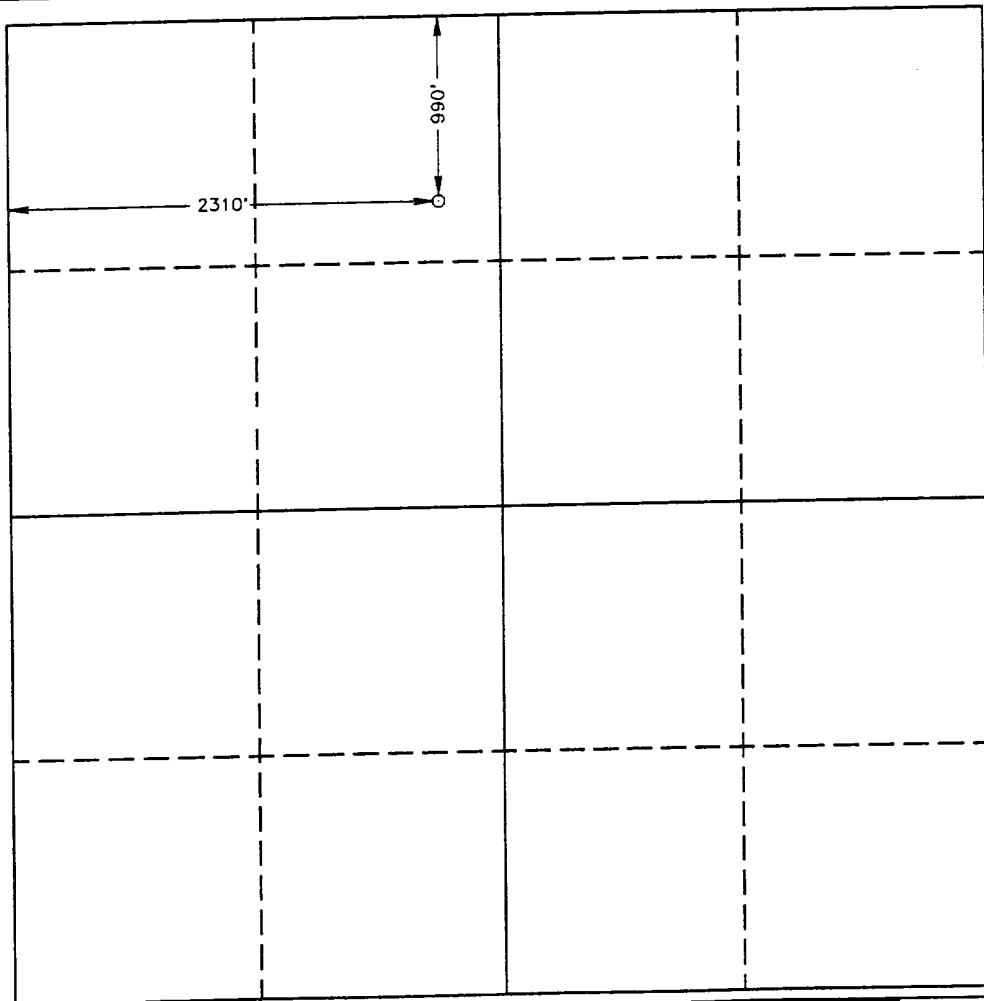
I hereby certify that the well location shown
on this plat was plotted from field notes of
actual surveys made by me or under my
supervision, and that the same is true and
correct to the best of my knowledge and
belief.

Date Surveyed

MARCH 12, 1993

Signature & Seal of
Professional Surveyor

[Signature]
Certified No. **JOHN W. WEST** 676
RONALD J. EIDSON 3239
CARY L. JONES 7977
93-11-0418



0 330 660 990 1320 1650 1980 2310 2640 2000 1500 1000 500 0

30-015-27363

Oxford[®]

✱ ESSELTE

MADE IN U.S.A.

NO. R753 1/3

•

•

•

•

7-30-93

Heulro

3000 - 4416

Laterlog

773 - 4420