

APPLICATION FOR PERMIT TO DRILL, DEEPEN, OR PLUG BACK

1a. TYPE OF WORK

DRILL ☒

DEEPEN ☐

PLUG BACK ☐

b. TYPE OF WELL

OIL  
WELL ☒

GAS  
WELL ☐

OTHER ☐

SINGLE  
ZONE ☐

MULTIPLE  
ZONE ☐

2. NAME OF OPERATOR

Marbob Energy Corporation

14049

3a. Area Code & Phone No.

505-748-3303

3. ADDRESS OF OPERATOR

P. O. Drawer 217, Artesia, NM 88210

4. LOCATION OF WELL (Report location clearly and in accordance with any State requirements.)

At surface

2310 FSL 2280 FWL Unit (K)

At proposed prod. zone SAME

14. DISTANCE IN MILES AND DIRECTION FROM NEAREST TOWN OR POST OFFICE\*

23.5 MILES EAST OF ARTESIA ON U.S. 82

15. DISTANCE FROM PROPOSED\*

LOCATION TO NEAREST  
PROPERTY OR LEASE LINE, FT.  
(Also to nearest drlg. unit line, if any)

2280'

16. NO. OF ACRES IN LEASE

630

17. NO. OF ACRES ASSIGNED  
TO THIS WELL

40

18. DISTANCE FROM PROPOSED LOCATION\*

TO NEAREST WELL, DRILLING, COMPLETED,  
OR APPLIED FOR, ON THIS LEASE, FT.

630'

19. PROPOSED DEPTH

5000'

20. ROTARY OR CABLE TOOLS

ROTARY

21. ELEVATIONS (Show whether DF, RT, GR, etc.)

3628' GR

22. APPROX. DATE WORK WILL START\*

2/1/95

23.

PROPOSED CASING AND CEMENTING PROGRAM

HOLE SIZE	CASING SIZE	WEIGHT/FOOT	GRADE	THREAD TYPE	SETTING DEPTH	QUANTITY OF CEMENT
12 1/4"	8 5/8"	24#	J-55	LT&C	350'	300 SX
7 7/8"	5 1/2"	17#	J-55	LT&C	5000'	1100 SX

PAY ZONE WILL BE SELECTIVELY PERFORATED  
AND STIMULATED AS NEEDED FOR OPTIMUM PRODUCTION.

ATTACHED ARE: 1. LOCATION & ACREAGE DEDICATION PLAT  
2. SUPPLEMENTAL DRILLING DATA  
3. SURFACE USE PLAN

Approved Subject to  
Special Requirements and  
Special Stipulations  
Attached

IN ABOVE SPACE DESCRIBE PROPOSED PROGRAM: If proposal is to deepen or plug back, give data on present productive zone and proposed new productive zone. If proposal is to drill or deepen directionally, give pertinent data on subsurface locations and measured and true vertical depths. Give blowout preventer program, if any.

24.

SIGNED

Rhonda Nelson

TITLE Production Clerk

DATE 12/21/94

(This space for Federal or State office use)

PERMIT NO.

APPROVAL DATE

APPROVED BY

1/3/ Yolanda Vega

TITLE

AREA MANAGER

DATE

1/31/95

CONDITIONS OF APPROVAL, IF ANY:

\*See Instructions On Reverse Side

LOT 1			
37.43			
LOT 2			
37.43			
LOT 3			
37.41			
LOT 4			
37.41			

### OPERATOR CERTIFICATION

*I hereby certify the the information contained herein is true and complete to the best of my knowledge and belief.*

Signature

RHONDA NELSON

Printed Name

PRODUCTION CLERK

Title

12/21/94

Date

### SURVEYOR CERTIFICATION

*I hereby certify that the well location shown on this plat was plotted from field notes of actual surveys made by me or under my supervision, and that the same is true and correct to the best of my belief.*

DECEMBER 1, 1994

Date Surveyed

Signature & Seal of Professional Surveyor

W.O. 84-115-2054

Certificate No. 11000 W. WEST.

RONALD J. EIDSON,

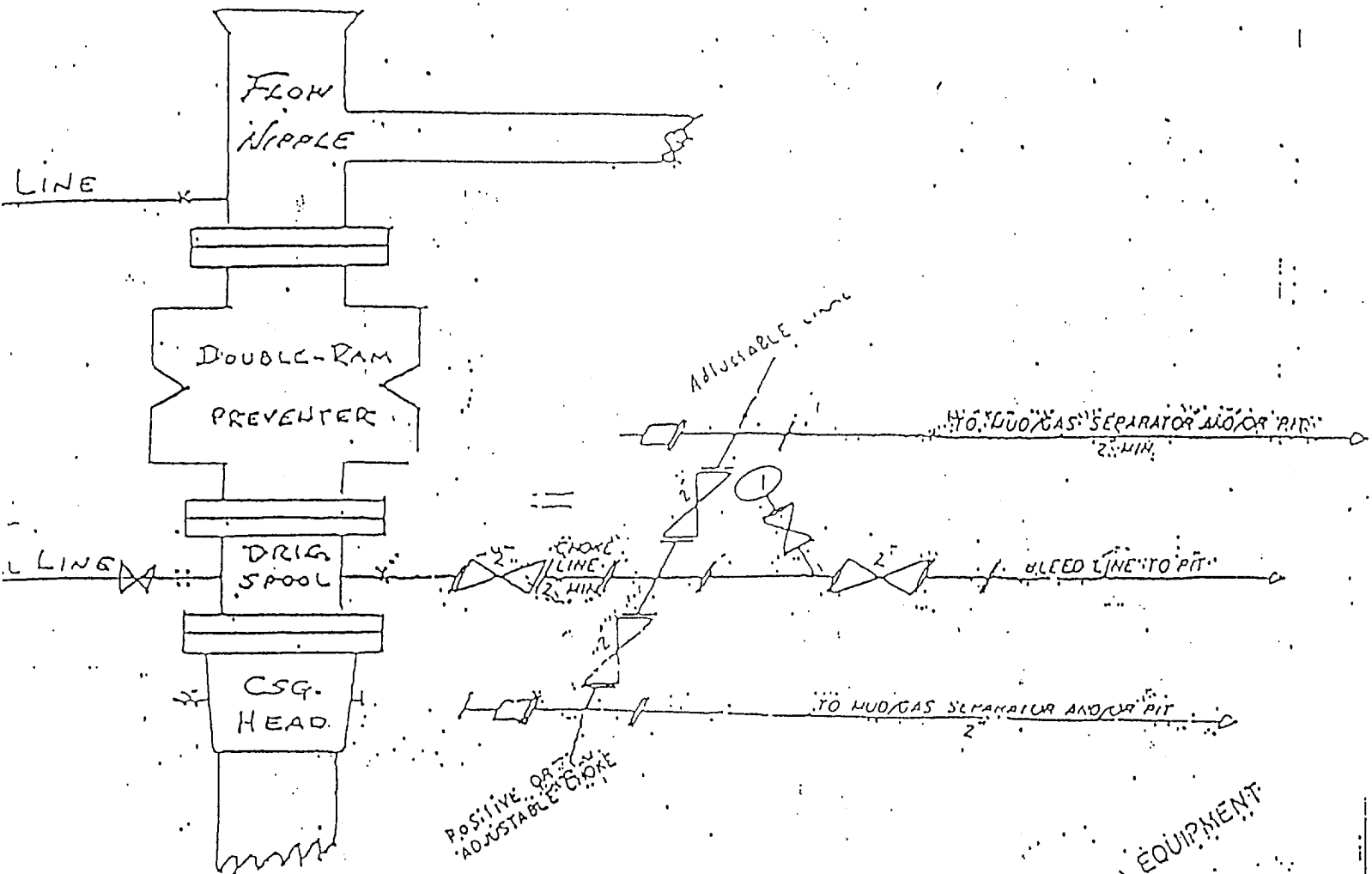
676

3239

EXHIBIT #1

# B O P & CHOKE MANIFOLD

10"/900 Cameron SS Space Saver  
3000# Working Pressure  
3,000# Working Pressure Choke Manifold



Marbob Energy Corporation

Burch AA Federal No. 40  
2310' FSL 2280' FWL  
Sec. 19, T-17S, R-30E  
Eddy County, New Mexico  
Exhibit #1