

DEPARTMENT OF THE INTERIOR  
BUREAU OF LAND MANAGEMENT

APPLICATION FOR PERMIT TO DRILL OR DEEPEN

1a. TYPE OF WORK

DRILL ☒

DEEPEN ☐

b. TYPE OF WELL

OIL  
WELL ☒

GAS  
WELL ☐

OTHER ☐

SINGLE  
ZONE ☐

MULTIPLE  
ZONE ☐

2. NAME OF OPERATOR

Burns Operating Company 50589 (Rex Armstrong)

3. ADDRESS AND TELEPHONE NO.

76309

P.O. Box 97525, Wichita Falls, Tx. (817)322-5426

4. LOCATION OF WELL (Report location clearly and in accordance with any State requirements.)\*

At surface 1800' FSL & 1410' FWL Sec 6 T17S R31E Eddy Co., NM

At proposed prod. zone

UNORTHODOX  
LOCATION:

Unit K

14. DISTANCE IN MILES AND DIRECTION FROM NEAREST TOWN OR POST OFFICE\*

Approx. 7 miles NE of Loco Hills, N.M.

15. DISTANCE FROM PROPOSED\*

LOCATION TO NEAREST

PROPERTY OR LEASE LINE, FT.

(Also to nearest drilg. unit line, if any)

1410'

18. DISTANCE FROM PROPOSED LOCATION\*

TO NEAREST WELL DRILLING, COMPLETED,

OR APPLIED FOR, ON THIS LEASE, FT.

500'

16. NO. OF ACRES IN LEASE

2560

17. NO. OF ACRES ASSIGNED

TO THIS WELL

40

19. PROPOSED DEPTH

12,500'

20. ROTARY OR CABLE TOOLS

Rotary

21. ELEVATIONS (Show whether DE, RT, GR, etc.)

3735 GR

22. APPROX. DATE WORK WILL START\*

As soon as approved

23.

PROPOSED CASING AND CEMENTING PROGRAM

Rooswell Controlled Water Desal

SIZE OF HOLE	GRADE SIZE OF CASING	WEIGHT PER FOOT	SETTING DEPTH	QUANTITY OF CEMENT
17-1/2"	H-40 13-3/8"	48#	600'	650 sx. Circulate to surface
12-1/2"	J-550 N-80 95/8"	36 & 40#	4600'	2200 sx. Circulate to surface
8-3/4"	S95 & N-80 5 1/2"	17#	11,630'	1st stage 400 sx.
-open hole completion contemplated-				2nd stage 750 sx.

SEE ATTACHED PAGE

RECEIVED

NOV 10 1995

OIL & GAS DIV.  
DIV. 2

Approved Subject to  
General Requirements and  
Special Stipulations  
Attached

Post ID-1  
11-17-95  
New Loc + API

OCT 10 9 27 AM '95

RECEIVED

IN ABOVE SPACE DESCRIBE PROPOSED PROGRAM. If proposal is to deepen, give data on present productive zone and proposed new productive zone. If proposal is to drill or deepen directionally, give pertinent data on subsurface locations and measured and true vertical depths. Give blowout preventer program, if any.

24.

SIGNED

Jose T. Garcia

TITLE Agent

DATE 10/06/95

(This space for Federal or State office use)

PERMIT NO.

APPROVAL DATE

Application approval does not warrant or certify that the applicant holds legal or equitable title to those rights in the subject lease which would entitle the applicant to conduct operations thereon.  
CONDITIONS OF APPROVAL, IF ANY:

APPROVED BY /s/ Yolanda Vega

TITLE

DATE

NOV 07 1995

\*See Instructions On Reverse Side

## DISTRICT I

P.O. Box 1980, Hobbs, NM 88241-1980

## DISTRICT II

P.O. Drawer 50, Artesia, NM 88211-0719

## DISTRICT III

1000 Rio Brazos Rd., Aztec, NM 87413

## DISTRICT IV

P.O. BOX 2088, SANTA FE, N.M. 87504-2088

## State of New Mexico

Energy, Minerals and Natural Resources Department

Form C-102

Revised February 10, 1994

Submit to Appropriate District Office

State Lease - 4 Copies

Fee Lease - 3 Copies

## OIL CONSERVATION DIVISION

P.O. Box 2088

Santa Fe, New Mexico 87504-2088

☐ AMENDED REPORT

## WELL LOCATION AND ACREAGE DEDICATION PLAT

API Number <b>30-015-28714</b>	Pool Code	Pool Name <b>WILDCAT Henshaw Deviation</b>
Property Code	Property Name <b>ARCO "6" FEDERAL</b>	Well Number <b>52</b>
GRID No.	Operator Name <b>BURNS OPERATING COMPANY</b>	Elevation <b>3735</b>

## Surface Location

UL or lot No.	Section	Township	Range	Lot Idn	Feet from the	North/South line	Feet from the	East/West line	County
<b>K</b>	<b>6</b>	<b>17 S</b>	<b>31 E</b>		<b>1800</b>	<b>SOUTH</b>	<b>1410</b>	<b>WEST</b>	<b>EDDA</b>

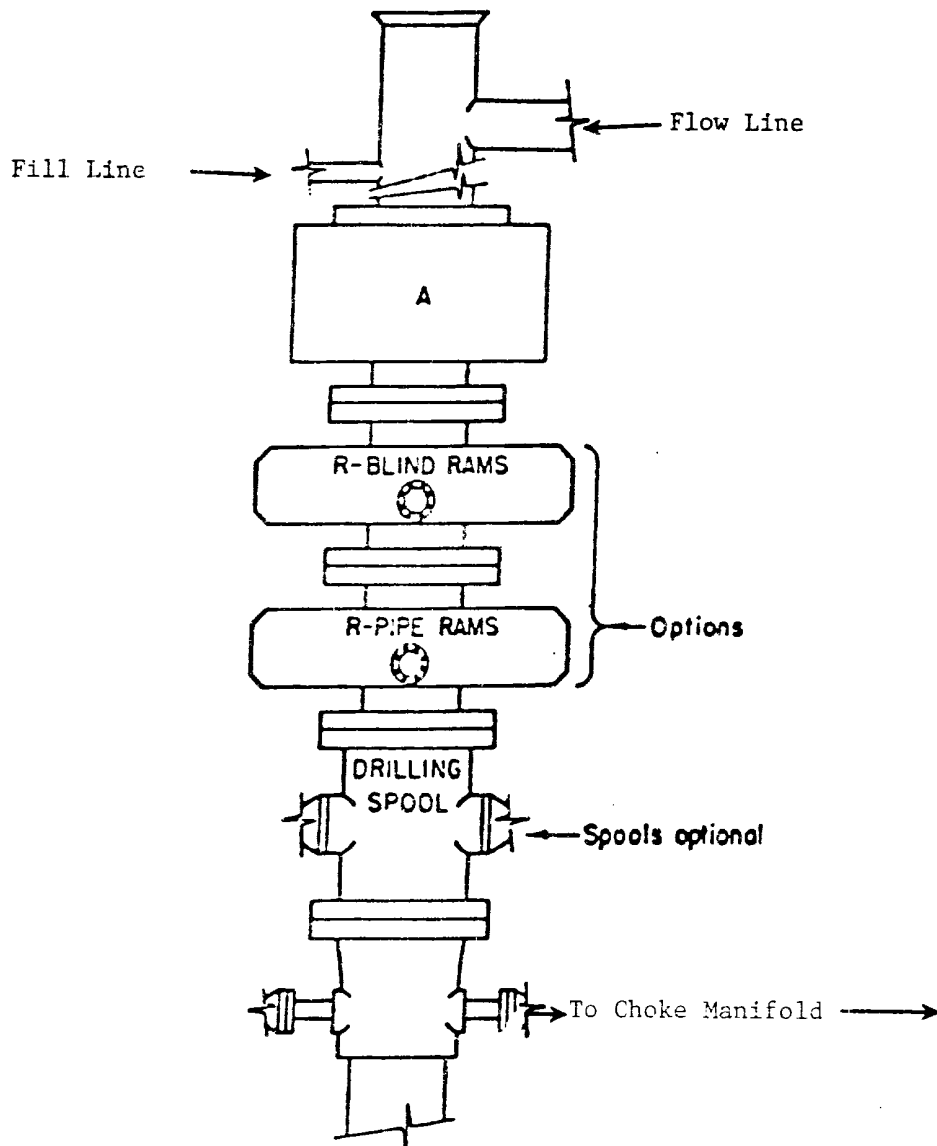
## Bottom Hole Location If Different From Surface

UL or lot No.	Section	Township	Range	Lot Idn	Feet from the	North/South line	Feet from the	East/West line	County

Dedicated Acres <b>40</b>	Joint or Infill	Consolidation Code	Order No.
------------------------------	-----------------	--------------------	-----------

NO ALLOWABLE WILL BE ASSIGNED TO THIS COMPLETION UNTIL ALL INTERESTS HAVE BEEN CONSOLIDATED  
OR A NON-STANDARD UNIT HAS BEEN APPROVED BY THE DIVISION

	<b>OPERATOR CERTIFICATION</b>  I hereby certify the the information contained herein is true and complete to the best of my knowledge and belief.  <i>Joe T Janica</i> Signature Joe T. Janica Printed Name Agent True Date 10/06/95
	<b>SURVEYOR CERTIFICATION</b>  I hereby certify that the well location shown on this plat was plotted from field notes of actual surveys made by me or under my supervision and that the same is true and correct to the best of my belief.  SEPTEMBER 27, 1995 Date Surveyed Signature & Seal of Professional Surveyor <i>Ronald E. Eubank</i> 10-3-95 W.D. C. 95-11-1480 Certificate No. JOHN A. WEST 676 RONALD E. EUBANK 1074 TERRY ROSEN 1264



**ARRANGEMENT SRRA**

1500 Series  
5000# Working Pressure

EXHIBIT "E"  
B.O.P. SKETCH TO BE USED ON  
BURNS OPERATING COMPANY  
ARCO "6" FEDERAL # 1  
1800' FSL & 1410' FWL SEC. 6

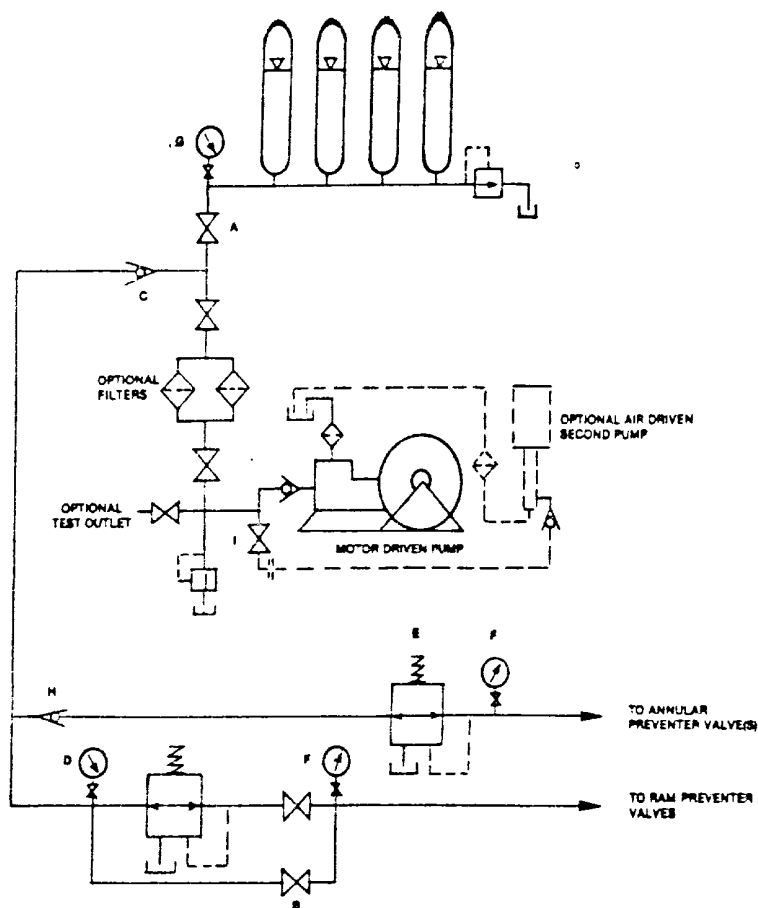


FIGURE K6-1. The schematic sketch of an accumulator system shows required and optional components.

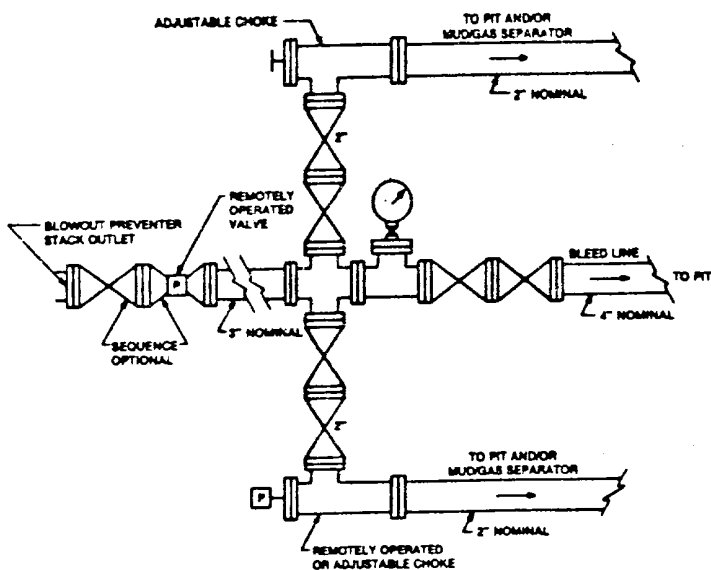


FIGURE K4-2. Typical choke manifold assembly for 5M rated working pressure service — surface installation.

EXHIBIT " 1-E"  
CHOKE MANIFOLD & CLOSING UNIT  
BURNS OPERATING COMPANY  
ARCO "6" FEDERAL # 1  
1800' FSL & 1410' FWL SEC. 6