

Form 3160-3  
July 1989  
(formerly 9-331C)

CONTACT RECEIVING OFFICE NUMBER 30-015-29529  
N. M. Oil Conservation  
811 S. 1ST ST. ARTESIA, NM 88210-2834  
Instructions on reverse side

BLM Roswell District  
Modified Form No.  
NM60-3160-2

UNITED STATES DEPARTMENT OF THE INTERIOR  
BUREAU OF LAND MANAGEMENT 3-17-97 *MM*

APPLICATION FOR PERMIT TO DRILL, DEEPEN, OR PLUG BACK

1a. TYPE OF WORK  
 DRILL  DEEPEN  PLUG BACK

b. TYPE OF WELL  
 OIL WELL  GAS WELL  OTHER

2. NAME OF OPERATOR  
 Marbob Energy Corporation 14049

3a. Area Code & Phone No.  
 505-748-3303

3. ADDRESS OF OPERATOR  
 P. O. Artesia, NM 88210

4. LOCATION OF WELL (Report location clearly and in accordance with any State requirements.)\*  
 At surface  
 1675 FSL 330 FEL  
 At proposed prod. zone  
 SAME Unit I

14. DISTANCE IN MILES AND DIRECTION FROM NEAREST TOWN OR POST OFFICE\*  
 EAST OF ARTESIA ON HWY 82 APPROX. 23.4 MILES

15. DISTANCE FROM PROPOSED\* LOCATION TO NEAREST PROPERTY OR LEASE LINE, FT. (Also to nearest drig. unit line, if any) 330'

16. NO. OF ACRES IN LEASE 640

17. NO. OF ACRES ASSIGNED TO THIS WELL 40

18. DISTANCE FROM PROPOSED\* LOCATION TO NEAREST WELL, DRILLING, COMPLETED, OR APPLIED FOR, ON THIS LEASE, FT. 4800'

19. PROPOSED DEPTH 4800'

20. ROTARY OR CABLE TOOLS ROTARY

21. ELEVATIONS (Show whether DF, RT, GR, etc.)  
 3619' GR

22. APPROX. DATE WORK WILL START\*  
 MAY 1, 1997

5. LEASE DESIGNATION AND SERIAL NO.  
 LC-028793A

6. IF INDIAN, ALLOTTEE OR TRIBE NAME

7. UNIT AGREEMENT NAME  
 BURCH KEELY UNIT 6497

8. FARM OR LEASE NAME

9. WELL NO.  
 847

10. FIELD AND POOL OR WILDCAT  
 28500  
 GRBG JACKSON SR Q GRBG SA

11. SEC., T., R., M., OR BLK. AND SURVEY OR AREA  
 SEC. 19-T17S-R30E

12. COUNTY OR PARISH  
 EDDY

13. STATE  
 NM

PROPOSED CASING AND CEMENT FOR CONTROLLED WATER BASIN

HOLE SIZE	CASING SIZE	WEIGHT/FOOT	GRADE	THREAD TYPE	SETTING DEPTH	QUANTITY OF CEMENT
12 1/4"	8 5/8"	24#	J-55	LT&C	350'	1100 SLS
7 7/8"	5 1/2"	17#	J-55	LT&C	4800'	1100 SLS

PAY ZONE WILL BE SELECTIVELY PERFORATED AND STIMULATED AS NEEDED FOR OPTIMUM PRODUCTION.

- ATTACHED ARE:
1. LOCATION & ACREAGE DEDICATION PLAT
  2. SUPPLMENTAL DRILLING DATA
  3. SURFACE USE PLAN

MASTER SURFACE USE PLAN ON FILE AT BLM OFFICE

APPROVAL SUBJECT TO GENERAL REQUIREMENTS AND SPECIAL STIPULATIONS ATTACHED

IN ABOVE SPACE DESCRIBE PROPOSED PROGRAM: If proposal is to deepen or plug back, give data on present productive zone and proposed new productive zone. If proposal is to drill or deepen directionally, give pertinent data on subsurface locations and measured and true vertical depths. Give blowout preventer program, if any.

24. SIGNER Phonda Nelson TITLE Production Clerk DATE 3/14/97

(This space for Federal or State office use)

PERMIT NO. \_\_\_\_\_ APPROVAL DATE \_\_\_\_\_

APPROVED BY DR. SCOTT TONY C. FERGUSON TITLE ADM, MINERALS DATE 4-15-97

CONDITIONS OF APPROVAL, IF ANY: \_\_\_\_\_

\*See Instructions On Reverse Side

DISTRICT I  
P.O. Box 1980, Hobbs, NM 88241-1980

State of New Mexico  
Energy, Minerals and Natural Resources Department

Form C-102  
Revised February 10, 1994  
Submit to Appropriate District Office  
State Lease - 4 Copies  
Fee Lease - 3 Copies

DISTRICT II  
P.O. Drawer DD, Artesia, NM 88211-0719

OIL CONSERVATION DIVISION  
P.O. Box 2088  
Santa Fe, New Mexico 87504-2088

MAR 13 1997

AMENDED REPORT

DISTRICT III  
1000 Rio Brazos Rd., Aztec, NM 87410

DISTRICT IV  
P.O. BOX 2088, SANTA FE, N.M. 87504-2088

WELL LOCATION AND ACREAGE DEDICATION PLAT

API Number	Pool Code	Pool Name
	28509	GRBG JACKSON SR Q GRBG SA
Property Code	Property Name	Well Number
6497	BURCH KEELY UNIT	847
OGRID No.	Operator Name	Elevation
14049	MARBOB ENERGY CORPORATION	3619

Surface Location

UL or lot No.	Section	Township	Range	Lot Idn	Feet from the	North/South line	Feet from the	East/West line	County
1	19	17 S	30 E		1675	SOUTH	330	EAST	EDDY

Bottom Hole Location If Different From Surface

UL or lot No.	Section	Township	Range	Lot Idn	Feet from the	North/South line	Feet from the	East/West line	County
Dedicated Acres		Joint or Infill		Consolidation Code		Order No.			

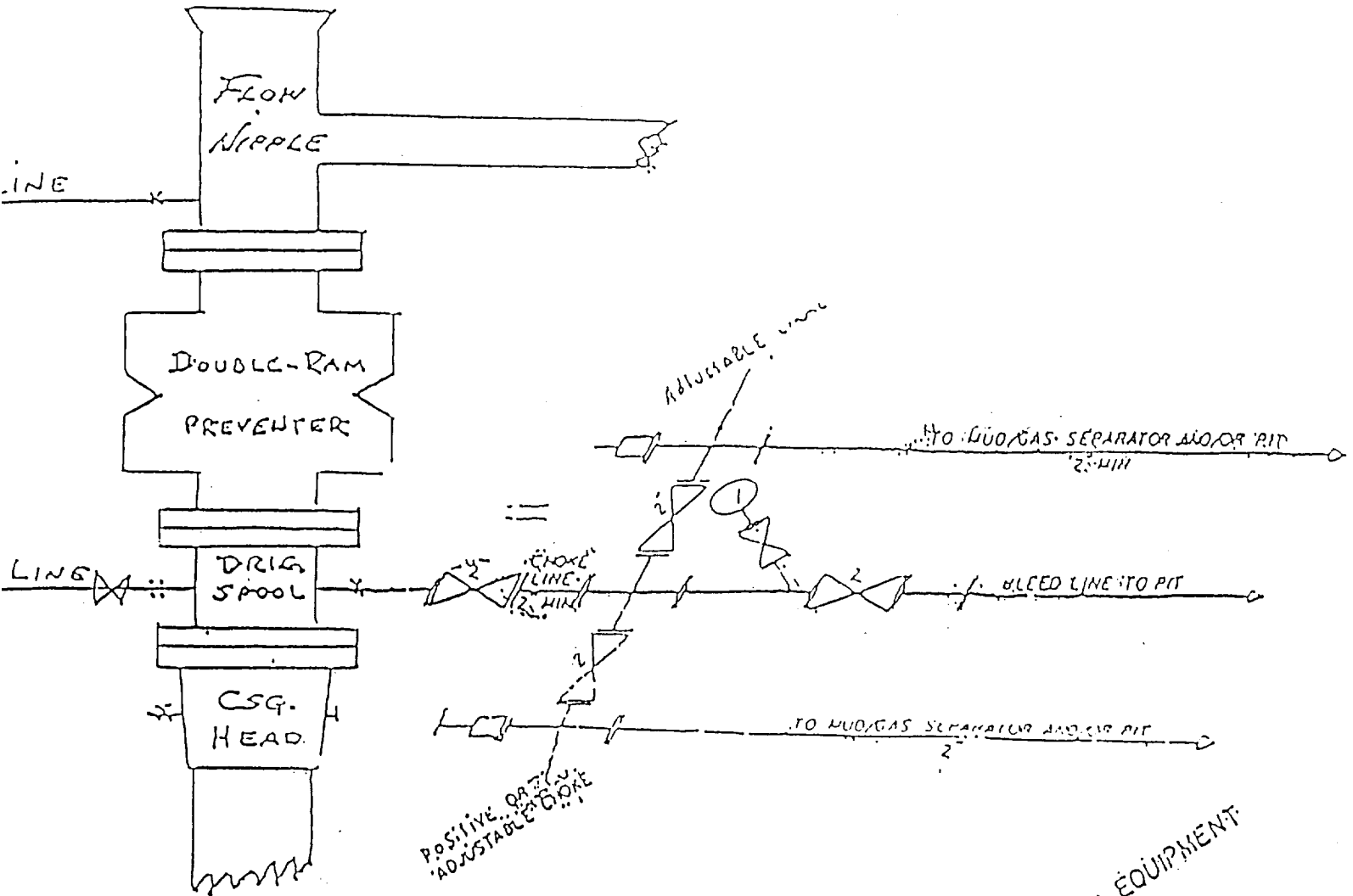
NO ALLOWABLE WILL BE ASSIGNED TO THIS COMPLETION UNTIL ALL INTERESTS HAVE BEEN CONSOLIDATED OR A NON-STANDARD UNIT HAS BEEN APPROVED BY THE DIVISION

<p>LOT 1</p> <p>37.43 ACRES</p> <p>LOT 2</p> <p>37.43 ACRES</p> <p>LOT 3</p> <p>37.41 ACRES</p> <p>LOT 4</p> <p>37.41 ACRES</p>		<p><b>OPERATOR CERTIFICATION</b></p> <p><i>I hereby certify the the information contained herein is true and complete to the best of my knowledge and belief.</i></p> <p><i>Rhonda Nelson</i> Signature</p> <p>RHONDA NELSON Printed Name</p> <p>PRODUCTION CLERK Title</p> <p>3/14/97 Date</p>
		<p><b>SURVEYOR CERTIFICATION</b></p> <p><i>I hereby certify that the well location shown on this plat was plotted from field notes of actual surveys made by me or under my supervision, and that the same is true and correct to the best of my belief.</i></p> <p>FEB. 19, 1997 Date Surveyed</p> <p>DMCC</p>
		<p>Professional Surveyor</p> <p><i>Ronald J. Eidson</i> Signature</p> <p>3-12-97</p>
		<p>Certificate No. JOHN W. WEST 676 RONALD J. EIDSON 3239 EIDSON 12641</p>

EXHIBIT #1

# B U P & CHOKE MANIFOLD

10"/900 Cameron SS Space Saver  
3000# Working Pressure  
3000# Working Pressure Choke Manifold



2 1/4" CHOKING MANIFOLD EQUIPMENT

MARBOB ENERGY CORPORATION

Burch Keely Unit No. 847  
1675' FSL and 330' FEL  
Section 19-17S-30E  
Eddy County, New Mexico  
Exhibit #1

Attachment to Exhibit #1  
NOTES REGARDING THE BLOWOUT PREVENTERS

1. Drilling nipple to be so constructed that it can be removed without use of a welder through rotary table opening, with minimum I.D. equal to preventer bore.
2. Wear ring to be properly installed in head.
3. Blow out preventer and all fittings must be in good condition, 3000 psi W.P. minimum.
4. All fittings to be flanged.
5. Safety valve must be available on rig floor at all times with proper connections, valve to be full bore 3000 psi W.P. minimum.
6. All choke and fill lines to be securely anchored, especially ends of choke lines.
7. Equipment through which bit must pass shall be at least as large as the diameter of the casing being drilled through.
8. Kelly cock on kelly.
9. Extension wrenches and hand wheels to be properly installed.
10. Blow out preventer control to be located as close to driller's position as feasible.
11. Blow out preventer closing equipment to include minimum 40 gallon accumulator, two independent sources of pump power on each closing unit installation, and meet all API specifications.