

N. M. Oil Cons. Division
ARTESIA UNITED STATES
DEPARTMENT OF THE INTERIOR
BUREAU OF LAND MANAGEMENT

CONTACT RECEIVING
OFFICE FOR NUMBER
OF COPIES REQUIRED
(Other in _____
revisions on
reverse side)

30-015-30492
BLM Roswell District
Modified Form No.
NM060-3160-2

27

APPLICATION FOR PERMIT TO DRILL, DEEPEN, OR PLUG BACK

1a. TYPE OF WORK

DRILL ☒

DEEPEN ☐

PLUG BACK ☐

b. TYPE OF WELL

OIL
WELL ☒

GAS
WELL ☐

OTHER

SINGLE
ZONE ☐

MULTIPLE
ZONE ☐

2. NAME OF OPERATOR

Marbob Energy Corporation

14049

3a. Area Code & Phone No.

505-748-3303

3. ADDRESS OF OPERATOR

P. O. BOX 227 Artesia, NM 88210

4. LOCATION OF WELL (Report location clearly and in accordance with any State requirements.)*

At surface

25 FNL 2450 FEL

At proposed prod. zone

SAME

Unit AB

14. DISTANCE IN MILES AND DIRECTION FROM NEAREST TOWN OR POST OFFICE*

EAST OF ARTESIA ON US 82 APPROX 23 MILES

15. DISTANCE FROM PROPOSED*

LOCATION TO NEAREST
PROPERTY OR LEASE LINE, FT.
(Also to nearest drlg. unit line, if any)

25'

16. NO. OF ACRES IN LEASE

1440

17. NO. OF ACRES ASSIGNED
TO THIS WELL

40

18. DISTANCE FROM PROPOSED LOCATION*
TO NEAREST WELL, DRILLING, COMPLETED,
OR APPLIED FOR, ON THIS LEASE, FT.

19. PROPOSED DEPTH

4800'

20. ROTARY OR CABLE TOOLS

ROTARY

21. ELEVATIONS (Show whether DF, RT, GR, etc.)

3616' GR

22. APPROX. DATE WORK WILL START*

NOVEMBER 1, 1998

PROPOSED CASING AND CEMENTING PROGRAM

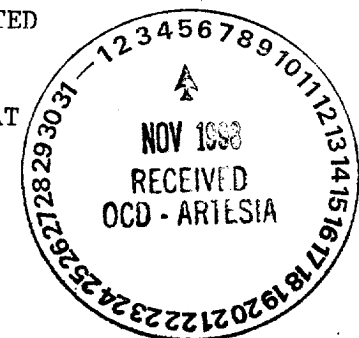
HOLE SIZE	CASING SIZE	WEIGHT/FOOT	GRADE	THREAD TYPE	SETTING DEPTH	QUANTITY OF CEMENT
12 1/4"	8 5/8"	24#	J-55	ST&C	350'	300 SX, CIRC
7 7/8"	5 1/2"	17#	J-55	LT&C	4800'	SUFFICIENT TO COVE
						ALL OIL & GAS HORIZONS

Post FD-1
11-13-98
API + LOC

PAY ZONE WILL BE SELECTIVELY PERFORATED AND STIMULATED
AS NEEDED FOR OPTIMUM PRODUCTION.

ATTACHED ARE: 1. LOCATION & ACREAGE DEDICATION PLAT
2. SUPPLEMENTAL DRILLING DATA
3. SURFACE USE PLAN

MASTER SURFACE USE PLAN ON FILE AT BLM ROSWELL



IN ABOVE SPACE DESCRIBE PROPOSED PROGRAM: If proposal is to deepen or plug back, give data on present productive zone and proposed new productive zone. If proposal is to drill or deepen directionally, give pertinent data on subsurface locations and measured and true vertical depths. Give blowout preventer program, if any.

SIGNED Thonda Nelson TITLE Production Clerk

DATE 10/5/98

(This space for Federal or State office use)

PERMIT NO.

APPROVAL DATE

APPROVED BY (ORIG. SIG.) ARMANDO A. LOPEZ

Acting Assistant Field Office Manager,
Lands and Minerals

CONDITIONS OF APPROVAL, IF ANY:

TITLE

DATE NOV 04 1998

*See Instructions On Reverse Side

DISTRICT I
P.O. Box 1980, Hobbs, NM 88241-1980

DISTRICT II
P.O. Drawer DD, Artesia, NM 88211-0719

DISTRICT III
1000 Rio Brazos Rd., Aztec, NM 87410

DISTRICT IV
P.O. BOX 2088, SANTA FE, N.M. 87504-2088

State of New Mexico
Energy, Minerals and Natural Resources Department

Form C-102
Revised February 10, 1994
Submit to Appropriate District Office
State Lease - 4 Copies
Fee Lease - 3 Copies

OIL CONSERVATION DIVISION

P.O. Box 2088
Santa Fe, New Mexico 87504-2088

☐ AMENDED REPORT

WELL LOCATION AND ACREAGE DEDICATION PLAT

API Number	Pool Code 28509	Pool Name GRBG JACKSON SR O GRBG SA
Property Code 6497	Property Name BURCH KEELY UNIT	Well Number 860
OGRID No. 14049	Operator Name MARBOB ENERGY CORPORATION	Elevation 3616

Surface Location

UL or lot No. B	Section 30	Township 17 S	Range 30 E	Lot Idn	Feet from the 25	North/South line NORTH	Feet from the 2450	East/West line EAST	County EDDY
--------------------	---------------	------------------	---------------	---------	---------------------	---------------------------	-----------------------	------------------------	----------------

Bottom Hole Location If Different From Surface

UL or lot No.	Section	Township	Range	Lot Idn	Feet from the	North/South line	Feet from the	East/West line	County
Dedicated Acres 40	Joint or Infill	Consolidation Code	Order No.						

NO ALLOWABLE WILL BE ASSIGNED TO THIS COMPLETION UNTIL ALL INTERESTS HAVE BEEN CONSOLIDATED
OR A NON-STANDARD UNIT HAS BEEN APPROVED BY THE DIVISION

LOT 1 37.43 ACRES LOT 2	3613.3' 3619.7' 3612.7' 3619.8' DETAIL	25' SEE DETAIL	2450'
LOT 3 37.51 ACRES			
LOT 4 37.57 ACRES			
37.65 ACRES			

OPERATOR CERTIFICATION

I hereby certify the the information contained herein is true and complete to the best of my knowledge and belief.

Rhonda Nelson
Signature
RHONDA NELSON
Printed Name
PRODUCTION ANALYST
Title
10/5/98
Date

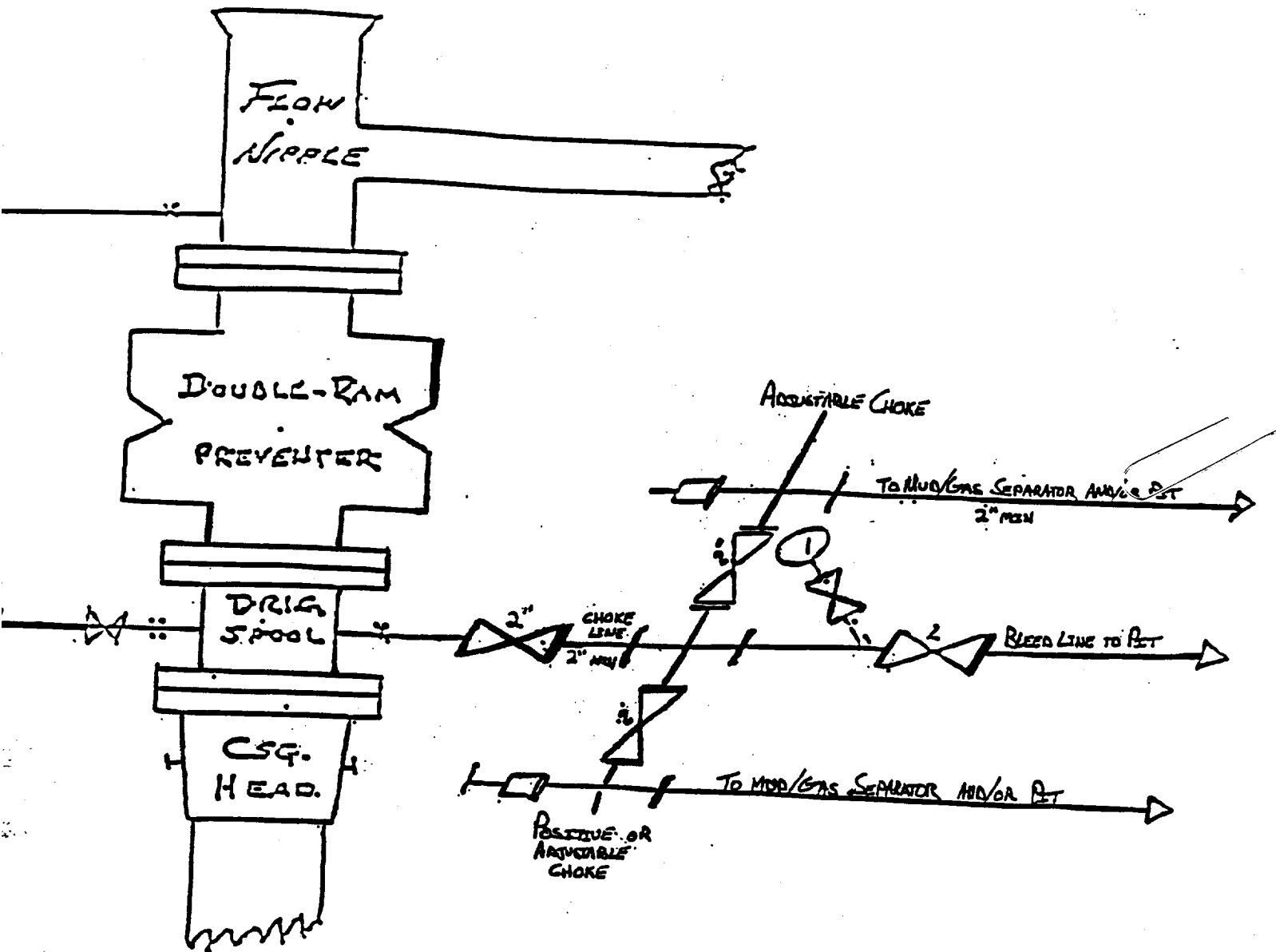
SURVEYOR CERTIFICATION

I hereby certify that the well location shown on this plat was plotted from field notes of actual surveys made by me or under my supervision, and that the same is true and correct to the best of my belief.

JULY 1, 1998

Date Surveyed
Signature & Seal of Professional Surveyor
RONALD J. BIDMAN 7-02-98
98-11-0973
Certificate No. RONALD J. BIDMAN 3239
GARY BIDMAN 12641
RONALD J. BIDMAN 12185

BLOW OUT PREVENTER AND CHOKE MANIFOLD



10"/900 Cameron SS Space Saver
3000# Working Pressure
3000# Working Pressure Choke Manifold

Burch Keely Unit # 860
25' FNL & 2450' FEL
Section 30; T17s -- R30e
Eddy County, New Mexico

Exhibit # 1

Attachment to Exhibit #1
NOTES REGARDING THE BLOWOUT PREVENTERS

1. Drilling nipple to be so constructed that it can be removed without use of a welder through rotary table opening, with minimum I.D. equal to preventer bore.
2. Wear ring to be properly installed in head.
3. Blow out preventer and all fittings must be in good condition, 1000 psi W.P. minimum.
4. All fittings to be flanged.
5. Safety valve must be available on rig floor at all times with proper connections, valve to be full bore 1000 psi W.P. minimum.
6. All choke and fill lines to be securely anchored, especially ends of choke lines.
7. Equipment through which bit must pass shall be at least as large as the diameter of the casing being drilled through.
8. Kelly cock on kelly.
9. Extension wrenches and hand wheels to be properly installed.
10. Blow out preventer control to be located as close to driller's position as feasible.
11. Blow out preventer closing equipment to include minimum 40 gallon accumulator, two independent sources of pump power on each closing unit installation, and meet all API specifications.