

UNITED STATES
DEPARTMENT OF THE INTERIOR
BUREAU OF LAND MANAGEMENT

CONTACT RECORDING
OFFICE OF COPI
MAILED
(Other instructions on reverse side)

BLM Roswell District
Modified Form No.
NMO60-3160-2

5. LEASE DESIGNATION AND SERIAL NO.

LC-028784B

6. IF INDIAN, ALLOTTEE OR TRIBE NAME

7. UNIT AGREEMENT NAME

BURCH KEELY UNIT

8. FARM OR LEASE NAME

BURCH KEELY UNIT 6497

9. WELL NO.

853

10. FIELD AND POOL, OR WILDCAT

GRBG JACKSON SR Q GRBG SA

11. SEC., T., R., M., OR BLK.
AND SURVEY OR AREA

SEC. 23-T17S-R29E

12. COUNTY OR PARISH 13. STATE

EDDY

NM

17. NO. OF ACRES ASSIGNED
TO THIS WELL

40

20. ROTARY OR CABLE TOOLS

ROTARY

22. APPROX. DATE WORK WILL START*

APRIL 17, 1999

PROPOSED CASING AND CEMENT **ROSWELL CONTROLLED WATER BASIN**

HOLE SIZE	CASING SIZE	WEIGHT/FOOT	GRADE	THREAD TYPE	SETTING DEPTH	QUANTITY OF CEMENT
12 1/4"	8 5/8"	24#	J-55	LTC	350'	
7 7/8"	5 1/2"	17#	J-55	LTC	4800'	SUFFICIENT TO COVER 200' ABOVE ALL OIL & GAS HORIZONS

PAY ZONE WILL BE SELECTIVELY PERFORATED AND STIMULATED AS
NEEDED FOR OPTIMUM PRODUTCION.

ATTACHED ARE: 1. LOCATION & ACREAGE DEDICATION PLAT
2. SUPPLEMENTAL DRILLING DATA
3. SURFACE USE PLAN

**APPROVAL SUBJECT TO
GENERAL REQUIREMENTS AND
SPECIAL STIPULATIONS
ATTACHED**

MASTER SURFACE USE PLAN ON FILE AT BLM ROSWELL

IN ABOVE SPACE DESCRIBE PROPOSED PROGRAM: If proposal is to deepen or plug back, give data on present productive zone and proposed new productive zone. If proposal is to drill or deepen directionally, give pertinent data on subsurface locations and measured and true vertical depths. Give blowout preventer program, if any.

SIGNED Robin Cockrum TITLE Production Clerk

DATE 3/22/99

(This space for Federal or State office use)

PERMIT NO. _____ Acting

APPROVAL DATE _____
Assistant Field Office Manager,
Lands and Minerals

APPROVED BY /s/ Gary A. Stephens

TITLE _____

DATE APR 21 1999

CONDITIONS OF APPROVAL, IF ANY:



DISTRICT I
P.O. Box 1980, Hobbs, NM 88241-1980

DISTRICT II
P.O. Drawer DD, Artesia, NM 88211-0719

DISTRICT III
1000 Rio Brazos Rd., Aztec, NM 87410

DISTRICT IV
P.O. BOX 2088, SANTA FE, N.M. 87504-2088

State of New Mexico
Energy, Minerals and Natural Resources Dept

Form C-102
Revised February 10, 1994
Submit to Appropriate District Office
State Lease - 4 Copies
Fee Lease - 3 Copies

OIL CONSERVATION DIVISION
P.O. Box 2088
Santa Fe, New Mexico 87504-2088

☐ AMENDED REPORT

WELL LOCATION AND ACREAGE DEDICATION PLAT

API Number	Pool Code 28509	Pool Name GRBG JACKSON SR Q GRBG SA
Property Code 6497	Property Name BURCH KEELY UNIT	Well Number 853
OGRID No. 14049	Operator Name MARBOB ENERGY CORPORATION	Elevation 3590

Surface Location

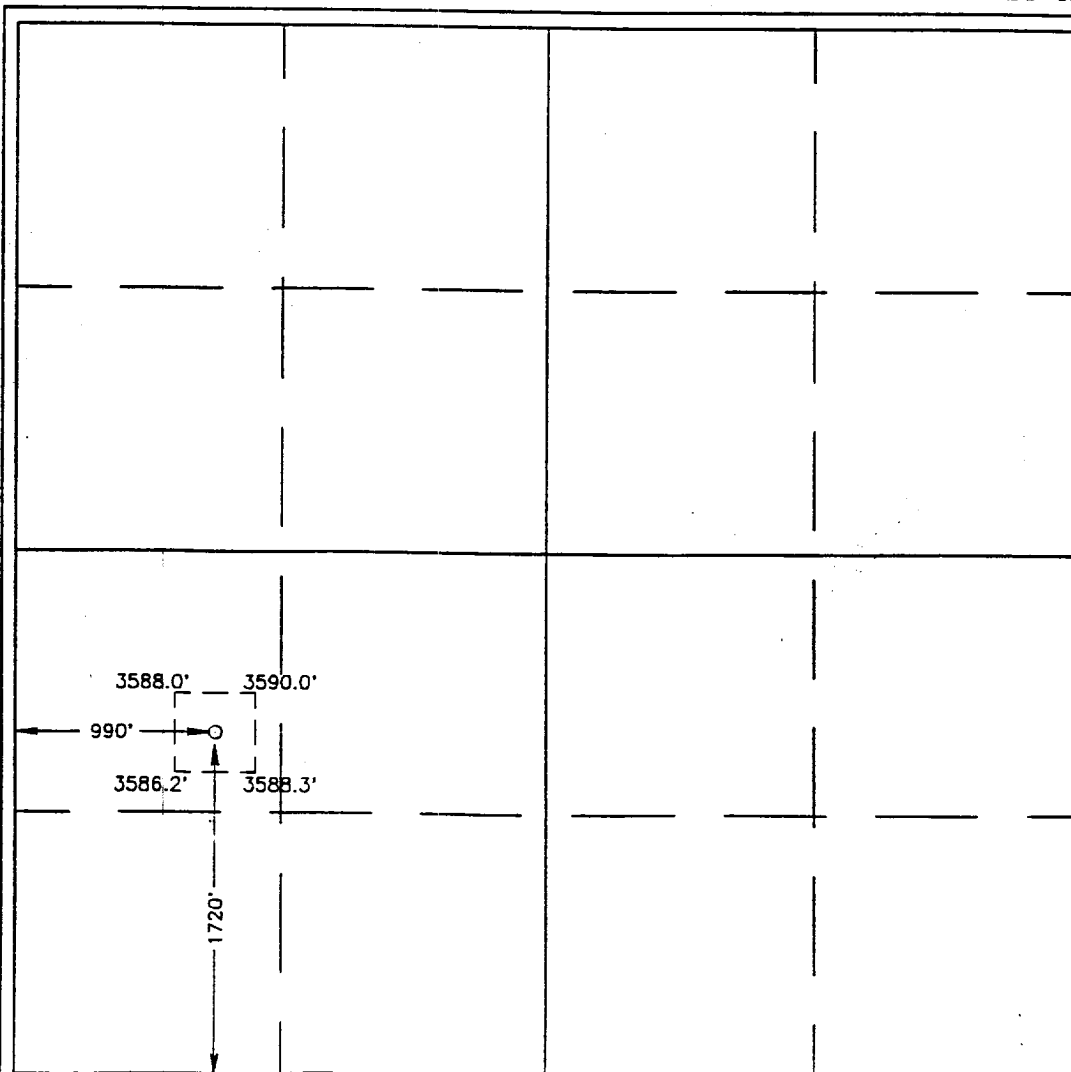
UL or lot No. L	Section 23	Township 17 S	Range 29 E	Lot Idn	Feet from the 1720	North/South line SOUTH	Feet from the 990	East/West line WEST	County EDDY
--------------------	---------------	------------------	---------------	---------	-----------------------	---------------------------	----------------------	------------------------	----------------

Bottom Hole Location If Different From Surface

UL or lot No.	Section	Township	Range	Lot Idn	Feet from the	North/South line	Feet from the	East/West line	County
---------------	---------	----------	-------	---------	---------------	------------------	---------------	----------------	--------

Dedicated Acres 40	Joint or Infill	Consolidation Code	Order No.
-----------------------	-----------------	--------------------	-----------

NO ALLOWABLE WILL BE ASSIGNED TO THIS COMPLETION UNTIL ALL INTERESTS HAVE BEEN CONSOLIDATED
OR A NON-STANDARD UNIT HAS BEEN APPROVED BY THE DIVISION



OPERATOR CERTIFICATION

I hereby certify the the information
contained herein is true and complete to the
best of my knowledge and belief.

Robin Cockrum
Signature

ROBIN COCKRUM

Printed Name

PRODUCTION ANALYST

Title

3/22/99

Date

SURVEYOR CERTIFICATION

I hereby certify that the well location shown
on this plat was plotted from field notes of
actual surveys made by me or under my
supervision, and that the same is true and
correct to the best of my belief.

JULY 23, 1997

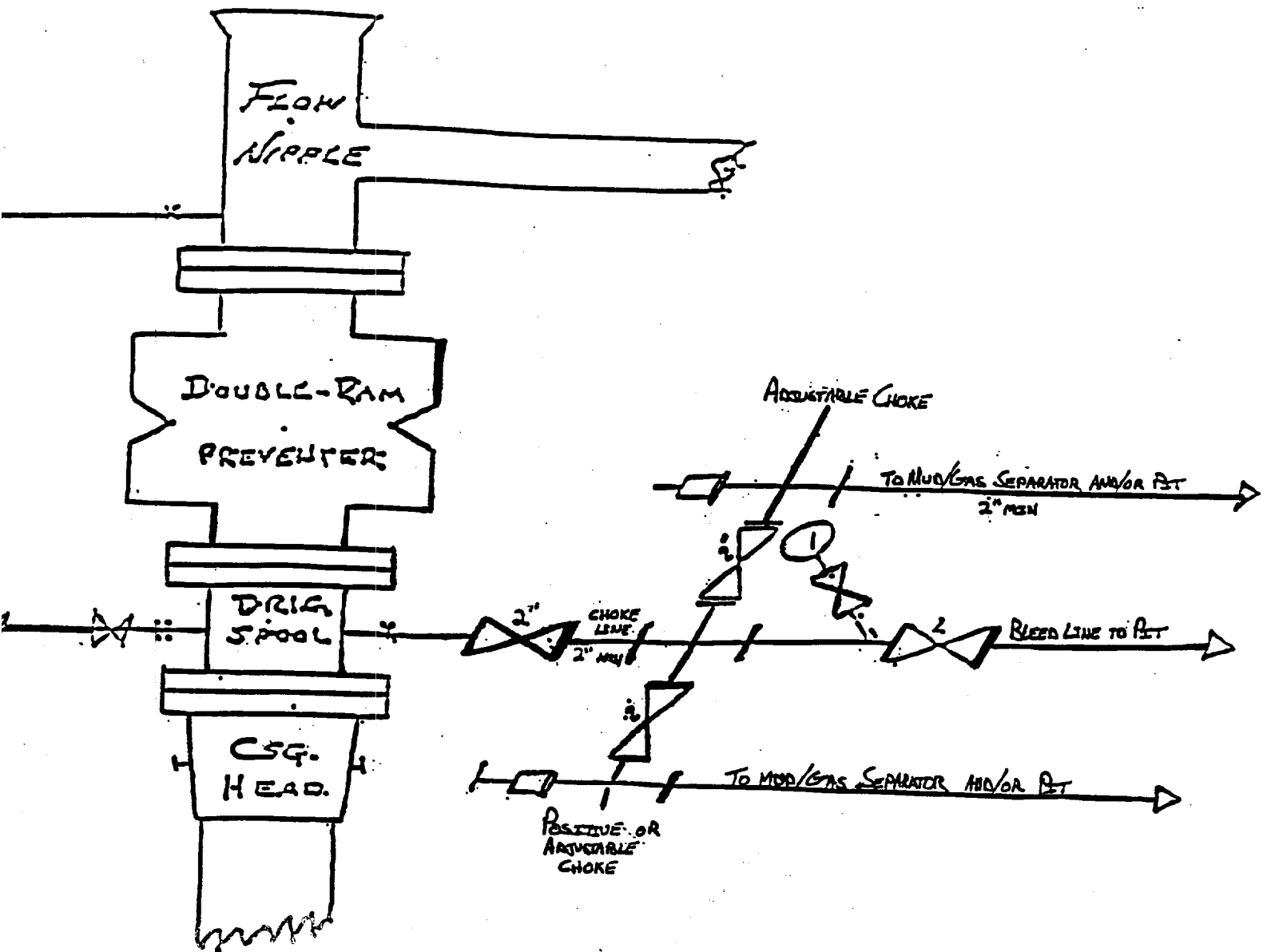
Date Surveyed DMCC

Signature & Seal of Professional Surveyor

Ronald J. Eidson
7-28-97
87-11-1243

Certificate No. JOHN W. WEST 676
RONALD J. EIDSON 3239
PROFESSIONAL SURVEYOR 12641

BLIND OUT PREVENTER AND CHOKE MANIFOLD



10"/900 Cameron SS Space Saver
3000# Working Pressure
3000# Working Pressure Choke Manifold

Burch Keely Unit # 853
1720' FSL & 990' FWL
Section 23: T17s - R29e
Eddy County, New Mexico

Exhibit One

Attachment to Exhibit #1
NOTES REGARDING THE BLOWOUT PREVENTERS

1. Drilling nipple to be so constructed that it can be removed without use of a welder through rotary table opening, with minimum I.D. equal to preventer bore.
2. Wear ring to be properly installed in head.
3. Blow out preventer and all fittings must be in good condition, 1000 psi W.P. minimum.
4. All fittings to be flanged.
5. Safety valve must be available on rig floor at all times with proper connections, valve to be full bore 1000 psi W.P. minimum.
6. All choke and fill lines to be securely anchored, especially ends of choke lines.
7. Equipment through which bit must pass shall be at least as large as the diameter of the casing being drilled through.
8. Kelly cock on kelly.
9. Extension wrenches and hand wheels to be properly installed.
10. Blow out preventer control to be located as close to driller's position as feasible.
11. Blow out preventer closing equipment to include minimum 40 gallon accumulator, two independent sources of pump power on each closing unit installation, and meet all API specifications.