

**UNITED STATES
DEPARTMENT OF THE INTERIOR
BUREAU OF LAND MANAGEMENT**

APPLICATION FOR PERMIT TO DRILL, DEEPEN, OR PLUG BACK

5. LEASE DESIGNATION AND SERIAL NO.
LC-028784A

6. IF INDIAN, ALLOTTEE OR TRIBE NAME

7. UNIT AGREEMENT NAME
BURCH KEELY UNIT

8. FARM OR LEASE NAME
BURCH KEELY UNIT 6497

9. WELL NO.
841

10. FIELD AND POOL, OR WILDCAT
GRBG JACKSON SR Q GRBG SA 28509

11. SEC., T., R., M., OR BLK. AND SURVEY OR AREA
SEC. 24-T17S-R29E

12. COUNTY OR PARISH
EDDY

13. STATE
NM

14. DISTANCE IN MILES AND DIRECTION FROM NEAREST TOWN OR POST OFFICE*
EAST OF ARTESIA ON HWY 82 APPROX 20.7 MILES

15. DISTANCE FROM PROPOSED* LOCATION TO NEAREST PROPERTY OR LEASE LINE, FT. (Also to nearest drlg. unit line, if any)
1980'

16. NO. OF ACRES IN LEASE
640

17. NO. OF ACRES ASSIGNED TO THIS WELL
40

18. DISTANCE FROM PROPOSED LOCATION* TO NEAREST WELL, DRILLING, COMPLETED, OR APPLIED FOR, ON THIS LEASE, FT.

19. PROPOSED DEPTH
4800'

20. ROTARY OR CABLE TOOLS
ROTARY

21. ELEVATIONS (Show whether DF, RT, GR, etc.)
3608' GR

22. APPROX. DATE WORK WILL START*
APRIL 25, 1999

PROPOSED CASING AND CEMENTING PROGRAM

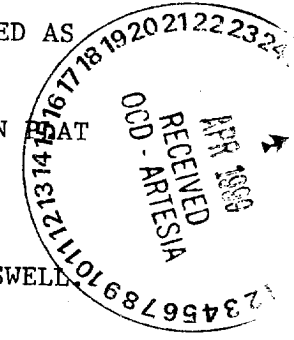
HOLE SIZE	CASING SIZE	WEIGHT/FOOT	GRADE	THREAD TYPE	SETTING DEPTH	QUANTITY OF CEMENT
12 1/4"	8 5/8"	24#	J-55	LTC	350'	SUFFICIENT TO COVER
7 7/8"	5 1/2"	17#	J-55	LTC	4800'	200' ABOVE ALL KNOWN OIL & GAS HORIZONS

Post ID-1
5-7-99
APE & Loc

PAY ZONE WILL BE SELECTIVELY PERFORATED AND STIMULATED AS NEEDED FOR OPTIMUM PRODUCTION.

- ATTACHED ARE:
1. WELL LOCATION & ACREAGE DEDICATION
 2. SUPPLEMENTAL DRILLING DATA
 3. SURFACE USE PLAN

MASTER SURFACE USE PLAN ON FILE AT BLM OFFICE IN ROSWELL



IN ABOVE SPACE DESCRIBE PROPOSED PROGRAM: If proposal is to deepen or plug back, give data on present productive zone and proposed new productive zone. If proposal is to drill or deepen directionally, give pertinent data on subsurface locations and measured and true vertical depths. Give blowout preventer program, if any.

SIGNED Robin Cochran TITLE Production Clerk DATE 3/24/99

(This space for Federal or State office use)

PERMIT NO. _____ APPROVAL DATE _____
APPROVED BY [s] Gary A. Stephens TITLE Assistant Field Office Manager.
LANDS AND MINERALS DATE 4-23-99

CONDITIONS OF APPROVAL, IF ANY:

RECEIVED

MAR 25 1988

BLM
ROSWELL, NM

DISTRICT I
P.O. Box 1980, Hobbs, NM 88241-1980

DISTRICT II
P.O. Drawer DD, Artesia, NM 88211-0719

DISTRICT III
1000 Rio Brazos Rd., Aztec, NM 87410

DISTRICT IV
P.O. BOX 2088, SANTA FE, N.M. 87504-2088

State of New Mexico
Energy, Minerals and Natural Resources Department

Form C-102
Revised February 10, 1994
Submit to Appropriate District Office
State Lease - 4 Copies
Fee Lease - 3 Copies

OIL CONSERVATION DIVISION

P.O. Box 2088
Santa Fe, New Mexico 87504-2088

AMENDED REPORT

WELL LOCATION AND ACREAGE DEDICATION PLAT

API Number	Pool Code	Pool Name
	28509	GRBG JACKSON SR Q GRBG SA
Property Code	Property Name	Well Number
6497	BURCH KEELY UNIT	841
OGRID No.	Operator Name	Elevation
14049	MARBOB ENERGY CORPORATION	3608

Surface Location

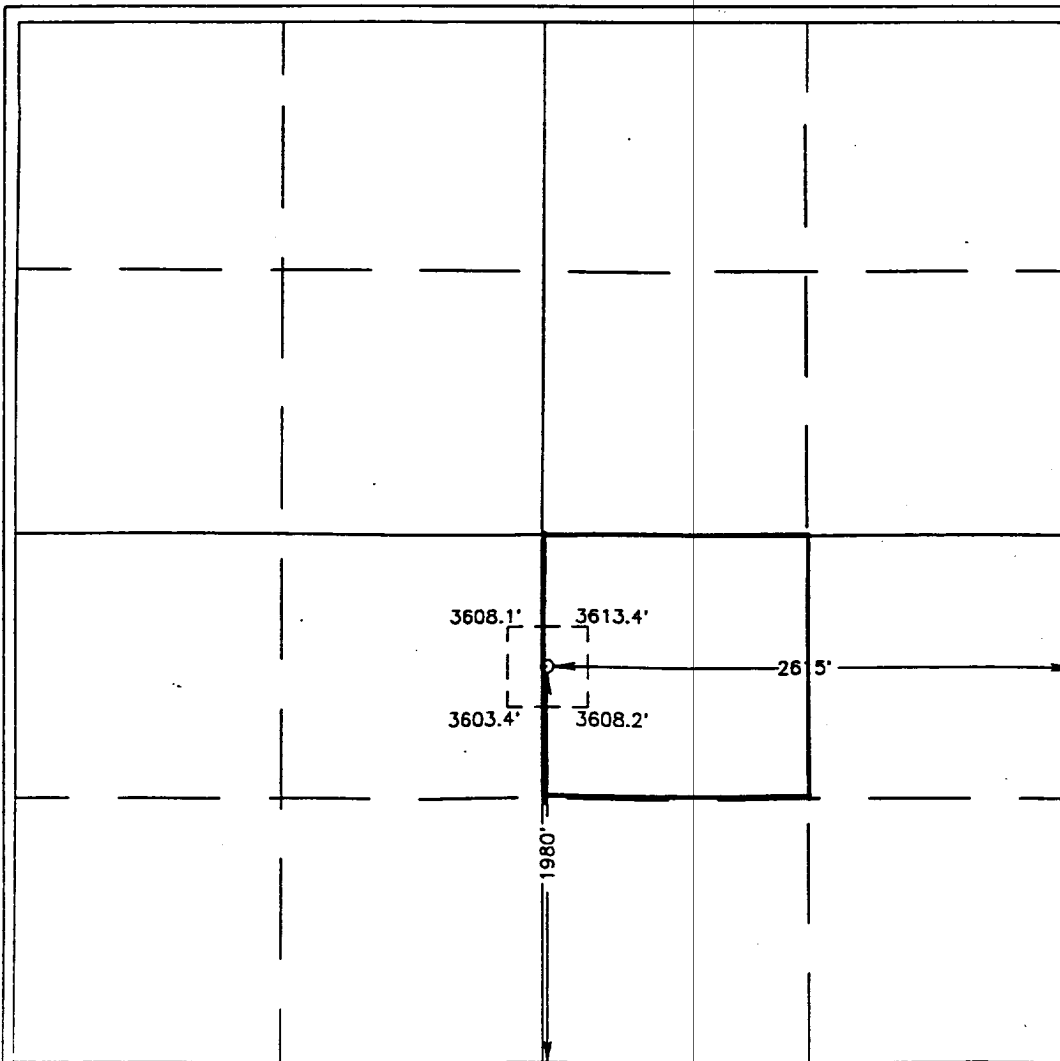
UL or lot No.	Section	Township	Range	Lot Idn	Feet from the	North/South line	Feet from the	East/West line	County
J	24	17 S	29 E		1980	SOUTH	2615	EAST	EDDY

Bottom Hole Location If Different From Surface

UL or lot No.	Section	Township	Range	Lot Idn	Feet from the	North/South line	Feet from the	East/West line	County

Dedicated Acres	Joint or Infill	Consolidation Code	Order No.
40			

NO ALLOWABLE WILL BE ASSIGNED TO THIS COMPLETION UNTIL ALL INTERESTS HAVE BEEN CONSOLIDATED OR A NON-STANDARD UNIT HAS BEEN APPROVED BY THE DIVISION



OPERATOR CERTIFICATION

I hereby certify the the information contained herein is true and complete to the best of my knowledge and belief.

Robin Cockrum
Signature

ROBIN COCKRUM
Printed Name

PRODUCTION ANALYST
Title

3/24/99
Date

SURVEYOR CERTIFICATION

I hereby certify that the well location shown on this plat was plotted from field notes of actual surveys made by me or under my supervision, and that the same is true and correct to the best of my belief.

FEB. 19, 1997

Date Surveyed: DMCC

Signature & Seal of Professional Surveyor

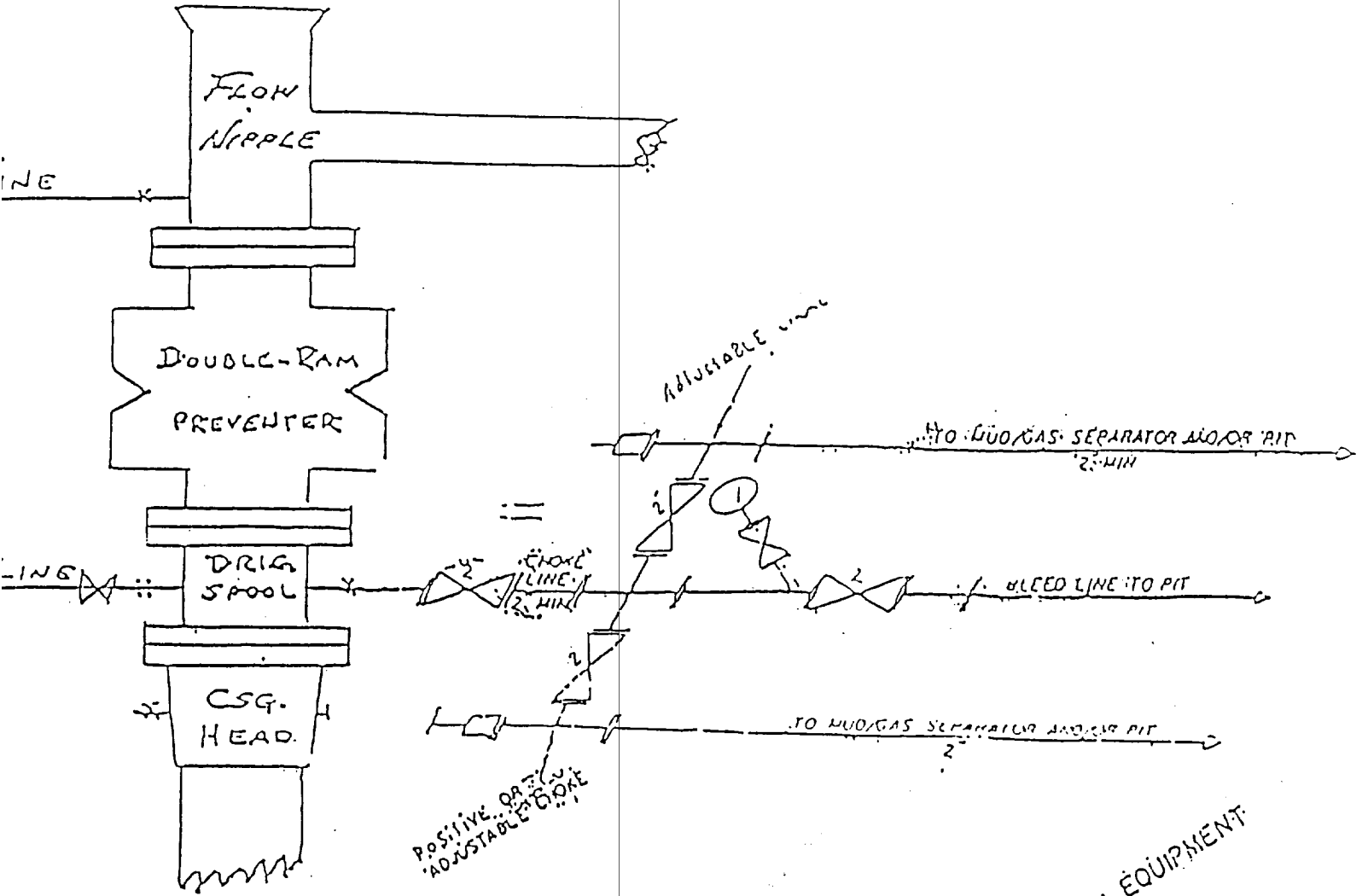
Ronald J. Eidson 2-25-97
697-11-0330

Certificate No. JOHN W. WEST 676
RONALD J. EIDSON 3239
GARY EIDSON 12641

EXHIBIT #1

B O P & CHOKE MANIFOLD

10"/900 Cameron SS Space Saver
3000# Working Pressure
3,000# Working Pressure Choke Manifold



2 1/4" CHOKE MANIFOLD EQUIPMENT

MARBOB ENERGY CORPORATION

Burch Keely Unit No. 841
1980' FSL and 2615' FEL
Section 24-17S-29E
Eddy County, New Mexico
Exhibit #1

Attachment to Exhibit #1
NOTES REGARDING THE BLOWOUT PREVENTERS

1. Drilling nipple to be so constructed that it can be removed without use of a welder through rotary table opening, with minimum I.D. equal to preventer bore.
2. Wear ring to be properly installed in head.
3. Blow out preventer and all fittings must be in good condition, 3000 psi W.P. minimum.
4. All fittings to be flanged.
5. Safety valve must be available on rig floor at all times with proper connections, valve to be full bore 3000 psi W.P. minimum.
6. All choke and fill lines to be securely anchored, especially ends of choke lines.
7. Equipment through which bit must pass shall be at least as large as the diameter of the casing being drilled through.
8. Kelly cock on kelly.
9. Extension wrenches and hand wheels to be properly installed.
10. Blow out preventer control to be located as close to driller's position as feasible.
11. Blow out preventer closing equipment to include minimum 40 gallon accumulator, two independent sources of pump power on each closing unit installation, and meet all API specifications.