

NO. OF COPIES RECEIVED	
DISTRIBUTION	
SANTA FE	1
FILE	1
U.S.G.S.	2
LAND OFFICE	
OPERATOR	1

NEW MEXICO OIL CONSERVATION COMMISSION

RECEIVED
MAY 14 1981

O. C. D.
ARTESIA, OFFICE

Form C-101
Revised 1-1-65

5A. Indicate Type of Lease STATE <input type="checkbox"/> FEE <input checked="" type="checkbox"/>
5. State Oil & Gas Lease No.
7. Unit Agreement Name
8. Farm or Lease Name Kleeman "QV"
9. Well No. 2
10. Field and Pool, or Wildcat Atoka-Yeso
12. County Eddy
19. Proposed Depth PBTD 3900'
19A. Formation Yeso
20. Rotary or C.T. Service Unit
21B. Drilling Contractor
22. Approx. Date Work will start

APPLICATION FOR PERMIT TO DRILL, DEEPEN, OR PLUG BACK

a. Type of Work	b. Type of Well OIL WELL <input checked="" type="checkbox"/> GAS WELL <input type="checkbox"/> OTHER <input type="checkbox"/>	DRILL <input type="checkbox"/> DEEPEN <input type="checkbox"/> PLUG BACK <input checked="" type="checkbox"/>
Name of Operator Yates Petroleum Corporation ✓	Address of Operator 207 South 4th St., Artesia, NM 88210	
Location of Well UNIT LETTER P LOCATED 660 FEET FROM THE South LINE	NO 330 FEET FROM THE East LINE OF SEC. 27 TWP. 18S RGE. 26E NMPM	
1. Elevations (Show whether DF, RT, etc.) 3333' GR	21A. Kind & Status Plug. Bond Blanket	21B. Drilling Contractor

PROPOSED CASING AND CEMENT PROGRAM

SIZE OF HOLE	SIZE OF CASING	WEIGHT PER FOOT	SETTING DEPTH	SACKS OF CEMENT	EST. TOP
* 12-1/4"	8-5/8"	24#	1010'	500 sx	Circ
* 7-7/8"	5-1/2"	14#	6425'	1500 sx	

This well was drilled by E. P. Campbell to a total depth of 6488' & was completed May 1, 1959, as an Abo oil well producing from the interval 5142-6160'. Existing casing & cement is shown above. Propose to abandon Abo completion by setting CIBP @ approximately 3950' & capping with a minimum of 35' of cement. After running cement bond log & performing any necessary corrective cementing operations, the Yeso interval 2700' to 3900' will be selectively perforated, tested, & stimulated as necessary to obtain production.

*Existing casing & cement.

ABOVE SPACE DESCRIBE PROPOSED PROGRAM: IF PROPOSAL IS TO DEEPEN OR PLUG BACK, GIVE DATA ON PRESENT PRODUCTIVE ZONE AND PROPOSED NEW PRODUCTIVE ZONE. GIVE BLOWOUT PREVENTER PROGRAM, IF ANY.

I hereby certify that the information above is true and complete to the best of my knowledge and belief.

Signed Albert R. Hall Title Engineer Date 5-14-81
(This space for State Use)

PROVED BY W. A. Gressett TITLE SUPERVISOR, DISTRICT II DATE MAY 18 1981

CONDITIONS OF APPROVAL, IF ANY:

CIBP @ 5100 + cap w/ 35' Cement

POSTED ID-2
9-1-81 PRA
2-1-81
C-12-11

NEW MEXICO OIL CONSERVATION COMMISSION
WELL LOCATION AND ACREAGE DEDICATION PLAT

RECEIVED

Form C-102
Supersedes C-128
Effective 1-1-65

MAY 14 1981

All distances must be from the outer boundaries of the Section.

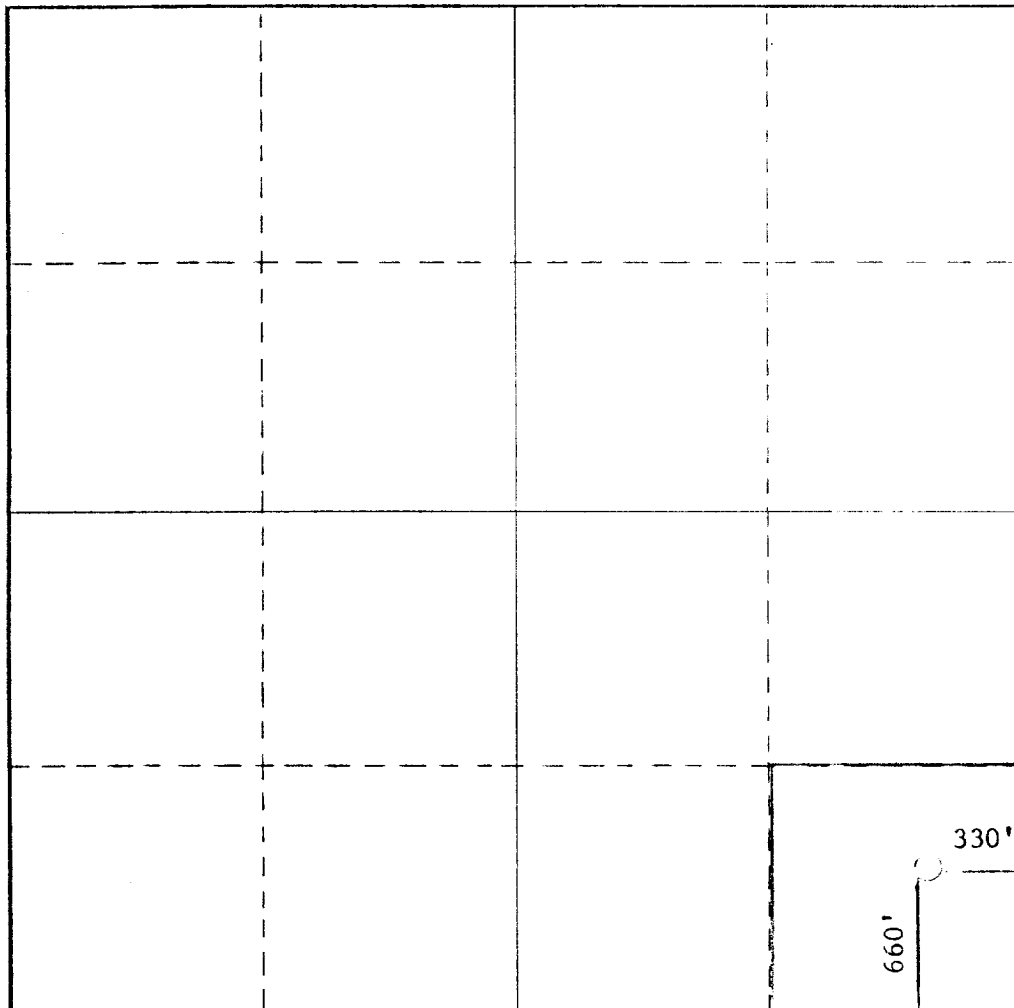
Operator Yates Petroleum Corporation			Lease Kleeman QV		O. C. D.	Well No. 2
Unit Letter P	Section 27	Township 18 South	Range 26 East	County ARTESIA, OFFICE		
Actual Footage Location of Well: 660 feet from the South line of 330 East line						
Ground Level Elev. 3333' GR	Producing Formation Yeso		Pool Atoka-Yeso		Dedicated Acreage 40 Acres	

1. Outline the acreage dedicated to the subject well by colored pencil or hatchure marks on the plat below.
2. If more than one lease is dedicated to the well, outline each and identify the ownership thereof (both as to working interest and royalty).
3. If more than one lease of different ownership is dedicated to the well, have the interests of all owners been consolidated by communitization, unitization, force-pooling, etc?

☐ Yes ☐ No If answer is "yes," type of consolidation _____

If answer is "no," list the owners and tract descriptions which have actually been consolidated. (Use reverse side of this form if necessary.) _____

No allowable will be assigned to the well until all interests have been consolidated (by communitization, unitization, forced-pooling, or otherwise) or until a non-standard unit, eliminating such interests, has been approved by the Commission.



CERTIFICATION

I hereby certify that the information contained herein is true and complete to the best of my knowledge and belief.

Albert R. Stall

Name
Albert R. Stall

Occupation
Engineer

Company
Yates Petroleum Corporation

Date
May 14, 1981

I hereby certify that the well location shown on this plat was plotted from field notes of actual surveys made by me or under my supervision, and that the same is true and correct to the best of my knowledge and belief.

REFER TO ORIGINAL PLAT

Date Surveyed

Registered Professional Engineer and/or Land Surveyor

Certificate No.

