

NEW MEXICO OIL CONSERVATION COMMISSION
Santa Fe, New Mexico

Form G-101
Revised (2/7/55)
RECEIVED

NOTICE OF INTENTION TO DRILL

MAR 31 1961

Notice must be given to the District Office of the Oil Conservation Commission and approval obtained before drilling or recompletion begins. If changes in the proposed plan are considered advisable, a copy of this notice showing such changes will be returned to the sender. Submit this notice in QUINTUPLICATE. One copy will be returned following approval. See additional instructions in Rules and Regulations of the Commission. If State Land submit 6 Copies Attach Form G-128 in triplicate to file 5 copies of form G-101

Artesia, New Mexico
(Place)

3/31/61
(Date)

OIL CONSERVATION COMMISSION
SANTA FE, NEW MEXICO

Gentlemen:

You are hereby notified that it is our intention to commence the Drilling of a well to be known as

Simms & Reese Oil Co.

(Company or Operator)

Western Development

(Lease)

Well No. 12, in N The well is

located 990 feet from the South Line line and 2310 feet from the

West Line

line of Section 26S, T. 18, R. 27E, NMPM.

(GIVE LOCATION FROM SECTION LINE)

Artesia Under Pool, Eddy County

If State Land the Oil and Gas Lease is No. B-11063

If patented land the owner is

Address

We propose to drill well with drilling equipment as follows: Cable

The status of plugging bond is Blanket

Drilling Contractor C. E. Reach Drilling Co.

We intend to complete this well in the Motex

formation at an approximate depth of 1920 feet.

CASING PROGRAM

We propose to use the following strings of Casing and to cement them as indicated:

Size of Hole	Size of Casing	Weight per Foot	New or Second Hand	Depth	Sacks Cement
10	8 5/8	24	Used	300	Set
8	5	12	New	1930	50

If changes in the above plans become advisable we will notify you immediately.

ADDITIONAL INFORMATION (If recompletion give full details of proposed plan of work.)

Will cement surface with 50 sacks if productive.

MAR 31 1961

Approved....., 19.....
Except as follows:

OIL CONSERVATION COMMISSION

By M. L. Armstrong

Sincerely yours,

Simms & Reese Oil Co.
(Company or Operator)

By

Position Partner

Send Communications regarding well to

Name R. L. Hainsch

102 S. 2nd Avenue, Santa Fe, New Mexico

OIL CONSERVATION COMMISSION			
ARIZONA DISTRICT OFFICE			
No. Copies Forwarded			
DIST. OFFICE			
OPERATION			
DATA			
FIELD OFFICE			
STATE LAND OFFICE			
U.S. F.S.			
NAVY DEPT.			
FILE			
SPECIAL AGENT			

30-015-00961

NEW MEXICO OIL CONSERVATION COMMISSION
WELL LOCATION AND ACREAGE DEDICATION PLAT

FORM C-128
 Revised 5/1/57

SEE INSTRUCTIONS FOR COMPLETING THIS FORM ON THE REVERSE SIDE

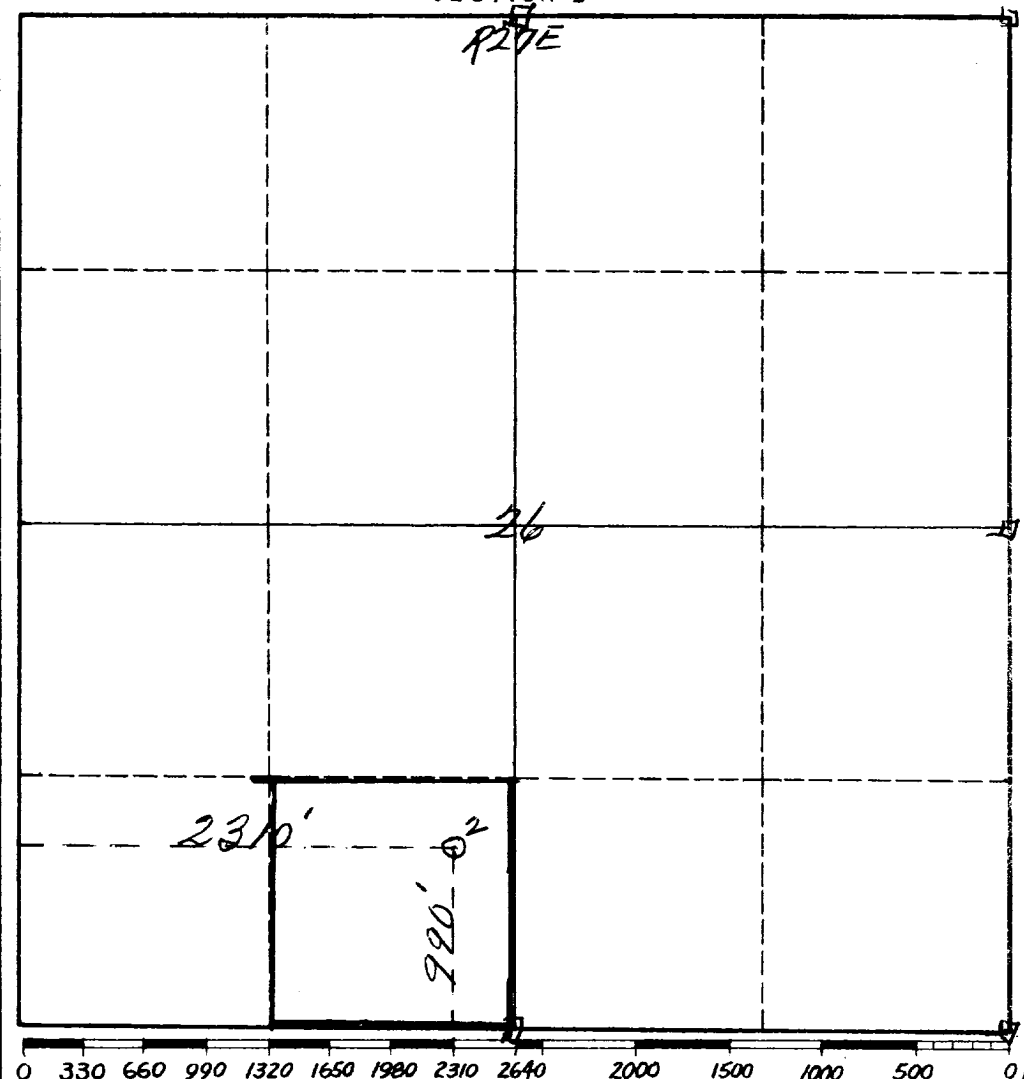
SECTION A

Operator <i>Simmons & Reese</i>			Lease <i>State (Western Development)</i>		Well No. <i>2</i>
Unit Letter <i>N</i>	Section <i>26</i>	Township <i>18S</i>	Range <i>27E</i>	County <i>Eddy</i>	
Actual Footage Location of Well: <i>990</i> feet from the <i>South</i> line and <i>2310</i> feet from the <i>West</i> line					
Ground Level Elev. <i>3492</i>	Producing Formation <i>mikey</i>		Pool <i>Artesian</i>	Dedicated Acreage: <i>40</i> Acres	

1. Is the Operator the only owner in the dedicated acreage outlined on the plat below? YES _____ NO _____. ("Owner" means the person who has the right to drill into and to produce from any pool and to appropriate the production either for himself or for himself and another. (65-3-29 (e) NMSA 1935 Comp.)
2. If the answer to question one is "no," have the interests of all the owners been consolidated by communitization agreement or otherwise? YES _____ NO _____. If answer is "yes," Type of Consolidation _____
3. If the answer to question two is "no," list all the owners and their respective interests below:

Owner	Land Description

SECTION B



CERTIFICATION

I hereby certify that the information in SECTION A above is true and complete to the best of my knowledge and belief.

Name <i>R. L. Heinisch</i>
Position <i>Partner</i>
Company <i>Simmons & Reese</i>
Date <i>3/31/61</i>

I hereby certify that the well location shown on the plat in SECTION B was plotted from field notes of actual surveys made by me or under my supervision, and that the same is true and correct to the best of my knowledge and belief.

Date Surveyed <i>March 31st 1961</i>
Registered Professional Engineer and/or Land Surveyor <i>James H. Brown</i>
Certificate No. <i>542</i>

INSTRUCTIONS FOR COMPLETION OF FORM C-128

1. Operator shall furnish and certify to the information called for in Section A.
2. Operator shall outline the dedicated acreage for *both* oil and gas wells on the plat in Section B.
3. A registered professional engineer or land surveyor registered in the State of New Mexico or approved by the Commission shall show on the plat the location of the well and certify this information in the space provided.
4. All distances shown on the plat must be from the outer boundaries of the Section.
5. If additional space is needed for listing owners and their respective interests as required in question 3 of Section A, please use space below.

OIL CONSERVATION COMMISSION	
ARTESIA DISTRICT OFFICE	
No. of Wells	7
Operator	
Owner	
State	
Production Office	
State Land Office	
U. S. G. S.	
Inspector	
File	
BUREAU OF MINES	