

NO. OF COPIES RECEIVED	5
DISTRIBUTION	
SANTA FE	1
FILE	1
U.S.G.S.	2
LAND OFFICE	
OPERATOR	1

NEW MEXICO OIL CONSERVATION COMMISSION

FEB 27 1979

O.C.C.
ARTESIA DISTRICT

30-015-22851

Form C-101
Revised 1-1-65

5A. Indicate Type of Lease	
STATE <input type="checkbox"/>	FEE <input checked="" type="checkbox"/>
5. State Oil & Gas Lease No.	
7. Unit Agreement Name	
8. Farm or Lease Name	
Wright "JA"	
9. Well No.	
#3	
10. Field and Pool, or Wildcat	
Atoka Yeso	
12. County	
Eddy	
19. Proposed Depth	19A. Formation
Approx 3150'	Yeso
20. Rotary or C.T.	
Rotary	
21. Elevations (Show whether DF, RT, etc.)	22. Approx. Date Work will start
33648 GR	As soon as approved

APPLICATION FOR PERMIT TO DRILL, DEEPEN, OR PLUG BACK

1a. Type of Work	
DRILL <input checked="" type="checkbox"/>	DEEPEN <input type="checkbox"/>
b. Type of Well	
OIL WELL <input checked="" type="checkbox"/>	GAS WELL <input type="checkbox"/>
SINGLE ZONE <input type="checkbox"/>	
MULTIPLE ZONE <input type="checkbox"/>	
2. Name of Operator	
Yates Petroleum Corporation	
3. Address of Operator	
207 S. 4th Street, Artesia, New Mexico 88210	
4. Location of Well	
UNIT LETTER H	LOCATED 2310
FEET FROM THE North LINE	
AND 330	FEET FROM THE East
LINE OF SEC. 33 TWP. 18S RGE. 26E NMPM	
21. Elevations (Show whether DF, RT, etc.)	
33648 GR	
21A. Kind & Status Plug. Bond	
Blanket	
21B. Drilling Contractor	
LaRue & Muncy	
22. Approx. Date Work will start	
As soon as approved	

PROPOSED CASING AND CEMENT PROGRAM

SIZE OF HOLE	SIZE OF CASING	WEIGHT PER FOOT	SETTING DEPTH	SACKS OF CEMENT	EST. TOP
9 1/2"	7"	20#	Approx. 1120	550 sx	Circulate
6 1/4"	5 1/2" & 4 1/2"	14# or 9.5#	Approx. 3150'	175 sx	Circulate

We propose to drill a Yeso and San Andres test. Casing will be set at least 100' below the Artesia Water Zone and cemented to the surface. Production casing will be a tapered 5 1/2" and 4 1/2" string and cemented to the surface. If commercial, will perforate and sand frac for production.

MUD PROGRAM: FW Gel & LCM to 1120', fresh water to TD.

BOP Program: BOP's will be installed on the 7" casing and tested.

APPROVAL VALID
FOR 90 DAYS UNLESS
DRILLING COMMENCED,
EXPIRES 5-28-79

IN ABOVE SPACE DESCRIBE PROPOSED PROGRAM: IF PROPOSAL IS TO DEEPEN OR PLUG BACK, GIVE DATA ON PRESENT PRODUCTIVE ZONE AND PROPOSED NEW PRODUCTIVE ZONE. GIVE BLOWOUT PREVENTER PROGRAM, IF ANY.

I hereby certify that the information above is true and complete to the best of my knowledge and belief.

Signed Eddie M. Qualiford Title Engineer Date February 23, 1979

(This space for State Use)

APPROVED BY W. A. Gessert TITLE SUPERVISOR, DISTRICT II DATE FEB 28 1979

CONDITIONS OF APPROVAL, IF ANY:

Cement must be circulated to
surface behind 7" casing

Notify N.M.O.C.C. in sufficient
time to witness cementing
the 7" casing

NEW MEXICO OIL CONSERVATION COMMISSION
WELL LOCATION AND ACREAGE DEDICATION PLAT

Form C-102
Supersedes C-128
Effective 1-1-65

All distances must be from the outer boundaries of the Section.

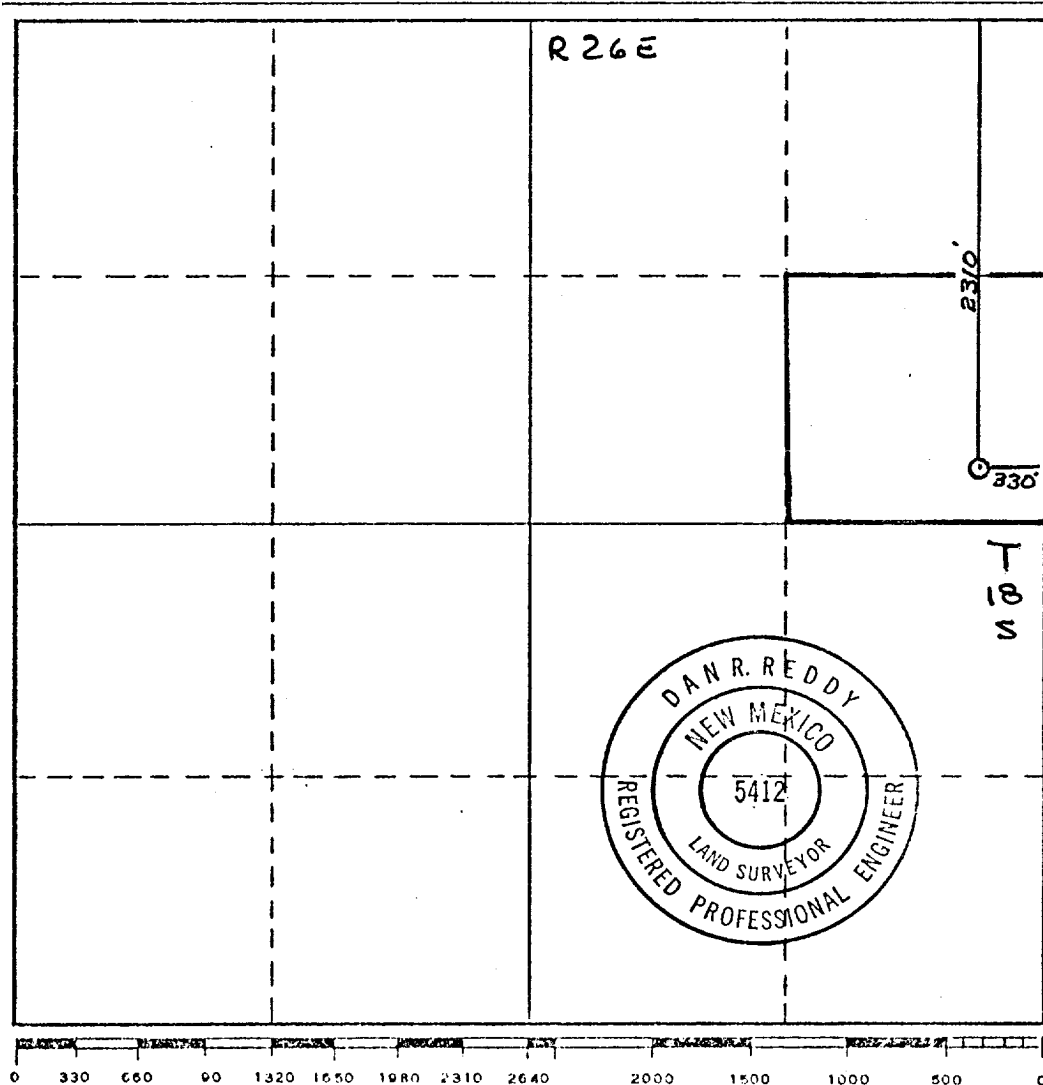
Operator YATES PETROLEUM CORPORATION		Lease Wright JA		Well No. 3
Unit Letter H	Section 33	Township 18 South	Range 26 East	County Eddy
Actual Footage Location of Well:				
2310	feet from the	North	line and	330
				feet from the
				East
Ground Level Elev. 3364.8	Producing Formation Yeso, S.A		Pool ATOKA (Yeso, S.A.)	Dedicated Acreage: 40 Acres

1. Outline the acreage dedicated to the subject well by colored pencil or hachure marks on the plat below.
2. If more than one lease is dedicated to the well, outline each and identify the ownership thereof (both as to working interest and royalty).
3. If more than one lease of different ownership is dedicated to the well, have the interests of all owners been consolidated by communitization, unitization, force-pooling, etc?

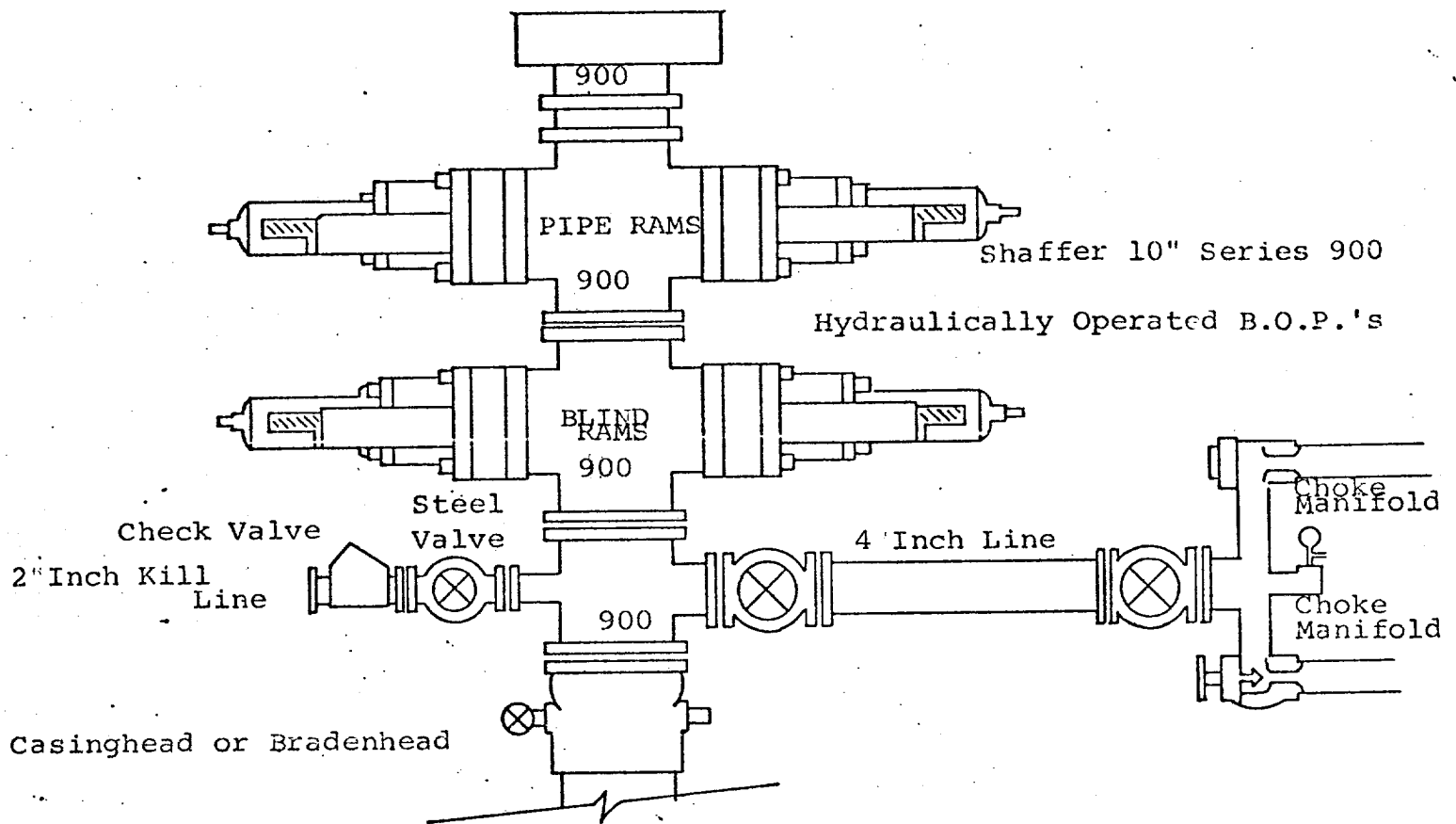
☐ Yes ☐ No If answer is "yes," type of consolidation _____

If answer is "no," list the owners and tract descriptions which have actually been consolidated. (Use reverse side of this form if necessary.) _____

No allowable will be assigned to the well until all interests have been consolidated (by communitization, unitization, forced-pooling, or otherwise) or until a non-standard unit, eliminating such interests, has been approved by the Commission.



CERTIFICATION	
I hereby certify that the information contained herein is true and complete to the best of my knowledge and belief.	
Name	EDDIE M. MAHFOOD
Position	ENGINEER
Company	YATES PETROLEUM CORP
Date	2-23-79
I hereby certify that the well location shown on this plat was plotted from field notes of actual surveys made by me or under my supervision, and that the same is true and correct to the best of my knowledge and belief.	
Date Surveyed	February 22, 1979
Registered Professional Engineer and/or Land Surveyor Dan R. Reddy	
Certificate No.	PE&LS - New Mexico #5412



THE FOLLOWING CONSTITUTE MINIMUM BLOWOUT PREVENTER REQUIREMENTS

1. All preventers to be hydraulically operated with secondary manual controls installed prior to drilling out from under casing.
2. Choke outlet to be a minimum of 4" diameter.
3. Kill line to be of all steel construction of 2" minimum diameter.
4. All connections from operating manifolds to preventers to be all steel. hole or tube a minimum of one inch in diameter.
5. The available closing pressure shall be at least 15% in excess of that required with sufficient volume to operate the B.O.P.'s.
6. All connections to and from preventer to have a pressure rating equivalent to that of the B.O.P.'s.
7. Inside blowout preventer to be available on rig floor.
8. Operating controls located a safe distance from the rig floor.
9. Hole must be kept filled on trips below intermediate casing. Operator not responsible for blowouts resulting from not keeping hole full.
10. D. P. float must be installed and used below zone of first gas intrusion.