

N. MEXICO OIL CONSERVATION COMMISSION
WELL LOCATION AND ACREAGE DEDICATION PLAT

Form C-102
Supersedes C-128
Effective 1-1-61

All distances must be from the outer boundaries of the Section.

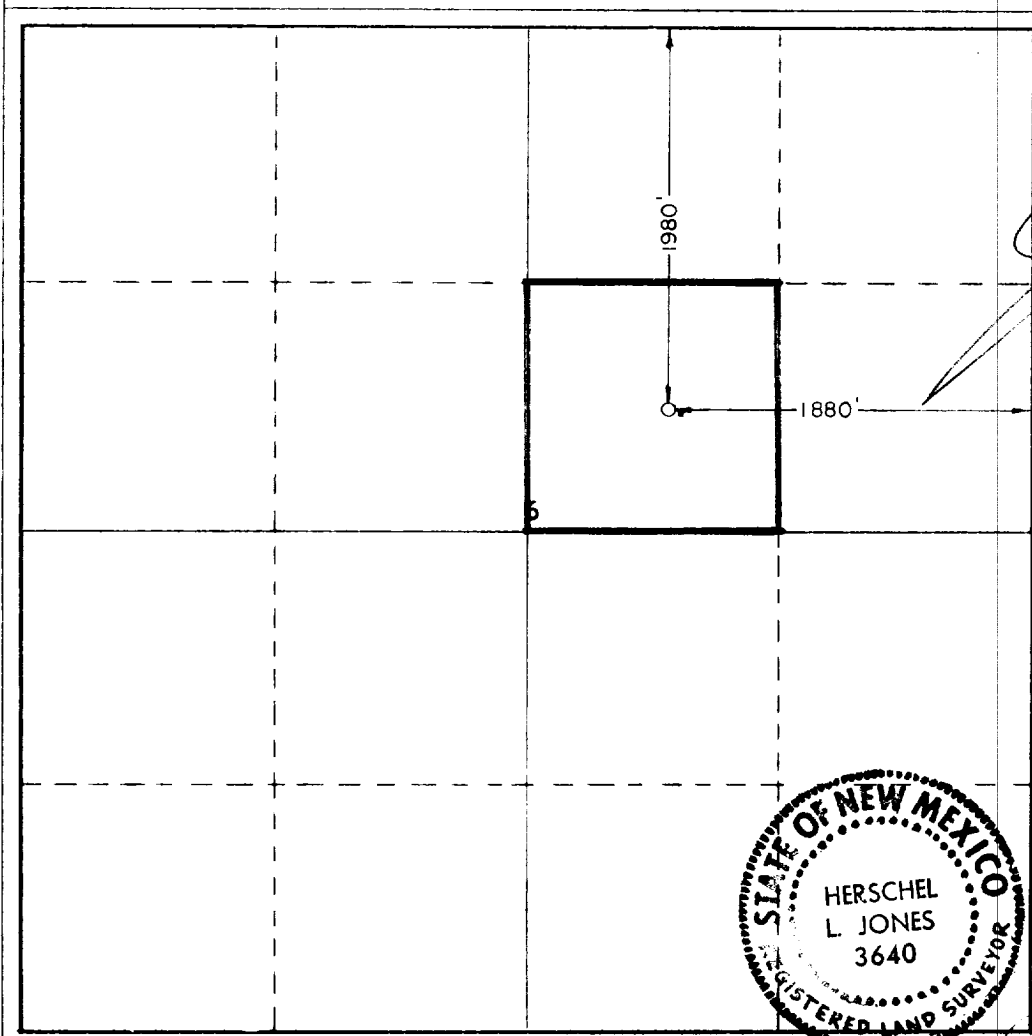
Operator ANADARKO PRODUCTION COMPANY			Lease Ballard Grayburg SA Unit Tr. 18			Well No. 1		
Tract Letter G	Section 6	Township 18 South	Range 29 East	County Iddy				
Actual Footage Location of Well: 1980 feet from the North line and 1880 feet from the East line.								
Ground Elevation 3620.4	Production Formation Grayburg		Pool Loco Hills-Queen-Grayburg-San Andres			Dedicated Acreage 40 Acres		

1. Outline the acreage dedicated to the subject well by colored pencil or hachure marks on the plat below.
2. If more than one lease is dedicated to the well, outline each and identify the ownership thereof (both as to working interest and royalty).
3. If more than one lease of different ownership is dedicated to the well, have the interests of all owners been consolidated by communitization, unitization, force-pooling, etc?

Yes No If answer is "yes," type of consolidation unitization

If answer is "no," list the owners and tract descriptions which have actually been consolidated. (Use reverse side of this form if necessary.) _____

No allowable will be assigned to the well until all interests have been consolidated (by communitization, unitization, forced-pooling, or otherwise) or until a non-standard unit, eliminating such interests, has been approved by the Commission.



CERTIFICATION

I hereby certify that the information contained herein is true and complete to the best of my knowledge and belief.

Jerry L. Buckles
Name

Jerry L. Buckles

Position
Area Supervisor

Company
Anadarko Production Co.

Date
February 15, 1982

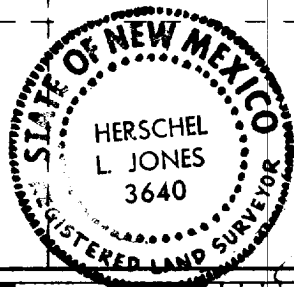
I hereby certify that the well location shown on this plat was plotted from field notes of actual surveys made by me or under my supervision, and that the same is true and correct to the best of my knowledge and belief.

Date Surveyed
2/1/82

Registered Professional Engineer and/or Land Surveyor

Herschel L. Jones
Certificate No.

3640



0 330 660 990 1320 1650 1980 2310 2640 2000 1500 1000 500 0