

UNITED STATES
DEPARTMENT OF THE INTERIOR
BUREAU OF LAND MANAGEMENT

SUBMIT IN TRIPLICATE*
(Other instructions on
reverse side)

30-015-26578
Form approved.
Budget Bureau No. 1004-0136
Expires August 31, 1985

APPLICATION FOR PERMIT TO DRILL, DEEPEN, OR PLUG BACK

5. LEASE DESIGNATION AND SERIAL NO. NM 07455 06245

6. IF INDIAN, ALLOTTEE OR TRIBE NAME

7. UNIT AGREEMENT NAME

8. FARM OR LEASE NAME Trigg Federal

9. WELL NO. 10

10. FIELD AND POOL, OR WILDCAT Shugart Y-SR-B-G

11. SEC., T., R., M., OR BLK. AND SURVEY OR AREA 35 T18S-R 30E

12. COUNTY OR PARISH Eddy

13. STATE NM

14. DISTANCE IN MILES AND DIRECTION FROM NEAREST TOWN OR POST OFFICE* 8 miles south of Loco Hills NM

15. DISTANCE FROM PROPOSED* LOCATION TO NEAREST PROPERTY OR LEASE LINE, FT. (Also to nearest drig. unit line, if any) 660

16. NO. OF ACRES IN LEASE 320

17. NO. OF ACRES ASSIGNED TO THIS WELL 40

18. DISTANCE FROM PROPOSED LOCATION* TO NEAREST WELL, DRILLING, COMPLETED, OR APPLIED FOR, ON THIS LEASE, FT. 990

19. PROPOSED DEPTH 3500

20. ROTARY OR CABLE TOOLS Rotary

21. ELEVATIONS (Show whether DF, RT, GR, etc.) 3513 Gr.

22. APPROX. DATE WORK WILL START* AŞAP

23. PROPOSED CASING AND CEMENTING PROGRAM

SIZE OF HOLE	SIZE OF CASING	WEIGHT PER FOOT	SETTING DEPTH	QUANTITY OF CEMENT
17 1/2	13 3/8	48	500	Circulate
12 1/2	8 5/8	24	1700	Circulate
7 7/8	5 1/2	17	3500	400 sxs

We propose to drill and test the Queen formation. Fresh water will be used to drill the surface and brine water will be used to drill the intermediate and production hole.

A 3000# BOP will be installed and tested on the 8 5/8" casing prior to drilling out casing shoe

APPROVAL SUBJECT TO
GENERAL REQUIREMENTS AND
SPECIAL STIPULATIONS
ATTACHED

Post ID-1
12-21-90
New Loc + A PI

NOV 20 11 41 AM '85
RECEIVED

IN ABOVE SPACE DESCRIBE PROPOSED PROGRAM: If proposal is to deepen or plug back, give data on present productive zone and proposed new productive zone. If proposal is to drill or deepen directionally, give pertinent data on subsurface locations and measured and true vertical depths. Give blowout preventer program, if any.

24. SIGNED [Signature] TITLE Geologist DATE 11/19/90
(This space for Federal or State office use)

PERMIT NO. _____ APPROVAL DATE _____
APPROVED BY _____ TITLE _____ DATE 12-10-90
CONDITIONS OF APPROVAL, IF ANY:

*See Instructions On Reverse Side

NEW MEXICO OIL CONSERVATION COMMISSION
WELL LOCATION AND ACREAGE DEDICATION PLAT

Form C-102
Supersedes C-128
Effective 1-1-65

All distances must be from the outer boundaries of the Section.

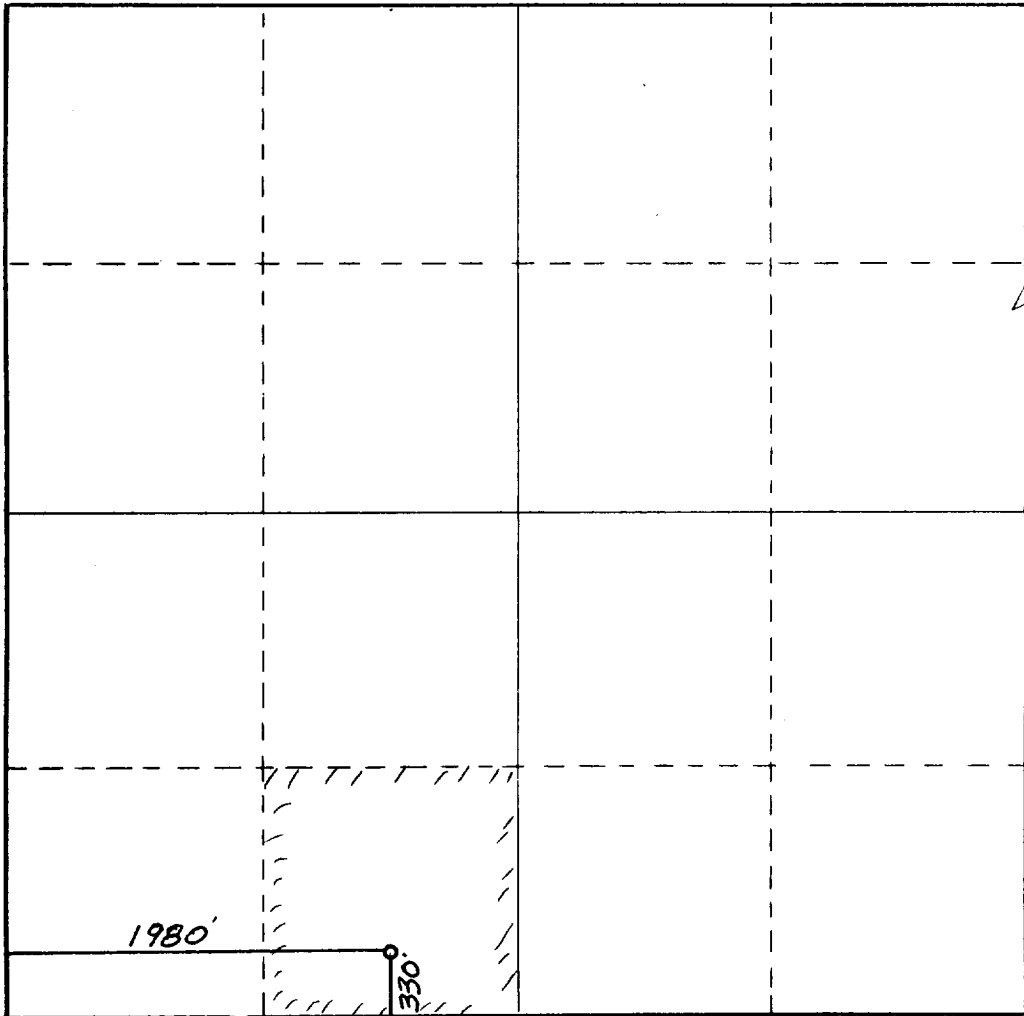
Operator RAY WESTALL		Lease Trigg Federal			Well No. 10
Unit Letter N	Section 35	Township 18 South	Range 30 East	County Eddy County, N.M.	
Actual Footage Location of Well: 1980 feet from the West line and 330 feet from the South line					
Ground Level Elev. 3513.	Producing Formation Queen		Pool Shugart	Dedicated Acreage: 40 Acres	

1. Outline the acreage dedicated to the subject well by colored pencil or hachure marks on the plat below.
2. If more than one lease is dedicated to the well, outline each and identify the ownership thereof (both as to working interest and royalty).
3. If more than one lease of different ownership is dedicated to the well, have the interests of all owners been consolidated by communitization, unitization, force-pooling, etc?

Yes No If answer is "yes," type of consolidation _____

If answer is "no," list the owners and tract descriptions which have actually been consolidated. (Use reverse side of this form if necessary.) _____

No allowable will be assigned to the well until all interests have been consolidated (by communitization, unitization, forced-pooling, or otherwise) or until a non-standard unit, eliminating such interests, has been approved by the Commission.

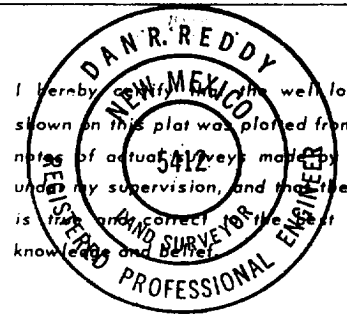


CERTIFICATION

I hereby certify that the information contained herein is true and complete to the best of my knowledge and belief.

Name *[Signature]*
Randall L. Harris
Position
Geologist
Company
Ray Westall
Date
11/19/90

I hereby certify that the well location shown on this plat was plotted from field notes of actual surveys made by me or under my supervision, and that the same is true and correct to the best of my knowledge and belief.

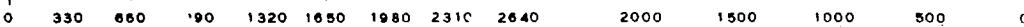


Date Surveyed
October 4, 1990

Registered Professional Engineer and/or Land Surveyor

[Signature]
Certificate No.

NM PE&PS NO. 5412



APPLICATION FOR DRILLING

Ray Westall
Trigg Federal 10

In conjunction with Form 9-331-c, Application for Permit to Drill subject well, Ray Westall submits the following ten items of pertinent information in accordance with BLM requirements:

1. The geological surface formation is quaternary.
2. The estimated tops of geologic markers are as follows:

Yates	2100
7 Rivers	2600
Queen	3100
3. The estimated depths at which anticipated water, oil & gas formations are expected to be encountered:

Water	0-180'
-------	--------

Oil and Gas zones listed in item #2
4. Proposed casing program: See 9-331-c
5. Pressure Control Equipment: See 9-331-c and exhibit E.
6. Mud Program: Fresh water in surface hole, brine water to TD
7. Auxiliary Equipment: None
8. Logging Program: CNL/FDC/GR, DLL.
9. No abnormal pressures or temperatures are anticipated.
10. Anticipated Starting Date: As soon as possible.

MULTI-POINT SURFACE USE AND OPERATIONS PLAN

RAY WESTALL

This plan is submitted with form 9-331-c, Application for Permit to Drill, covering the above described well. The purpose of this plan is to describe the location of the proposed well, the proposed construction activities and operations plan, the magnitude of surface disturbance involved, and the procedures to be followed in rehabilitating the surface after completion of the operations, so that a complete appraisal can be made of the environmental effect associated with the operation.

1. EXISTING ROADS.

Exhibit A is a portion of a USGS topographic map showing the wells and roads in the vicinity of the proposed location.

2. PLANNED ACCESS ROAD.

Approximately 460 feet of road will have to be built from the main road.

DIRECTIONS.

Proceed east from Loco Hills to county road 222. Go south approximately 7 miles, turn west 4 miles. Turn south 1 mile new road will start on well pad and go northwest 460 feet.

3. LOCATION OF EXISTING WELLS.

There is no existing wells on this 40 acres.

4. LOCATION OF EXISTING/OR PROPOSED FACILITIES

There is production facilities on the lease located on the Trigg Federal #1 location in the NESW Section 35.

5. LOCATION AND TYPE OF WATER SUPPLY.

It is planned to drill the proposed well with a brine water system. The water will be obtained from commercial sources and will be hauled to the location by truck.

6. SOURCE OF CONSTRUCTION MATERIALS.

The location and road will be scraped out to caliche.

7. METHODS OF HANDLING WASTE DISPOSAL.

- A. Drill cuttings will be disposed of in the reserve pit.
- B. Drilling fluids will be allowed to evaporate in the reserve pits until the pits are dry.
- C. Produced water during operations will be stored in reserve pits until dry.
- D. Oil produced during operations will be stored in tanks until sold.
- E. Current laws and regulations pertaining to the disposal of human waste will be complied with.
- F. Trash, waste paper, garbage and junk will be buried in a separate trash pit and covered with a minimum of 24 inches of dirt. All waste material will be contained to prevent scattering by the wind.
- G. All trash and debris will be buried or removed from the wellsite within 30 days after finishing drilling and or completion of operations.

8. ANCILLARY FACILITIES

None required.

9. WELLSITE LAYOUT.

Exhibit C shows the relative location and dimensions of the well pad, the reserve pits, a 400' X 400' area has been staked and flagged.

10. PLANS FOR RESTORATION OF THE SURFACE.

- A. After finishing drilling and completion operations, all equipment and other material not needed for further operations will be removed. The location will be cleaned of all trash and junk to leave the wellsite in as aesthetically pleasing a condition as possible.
- B. Unguarded pits, if any containing fluids will be fenced until they have been filled.
- C. If the proposed well is non-productive, all rehabilitation and or vegetation requirements of the BLM and USGS will be complied with and will be accomplished as expeditiously as possible. All pits will be filled and leveled within 90 days after abandonment.

11. OTHER INFORMATION.

- A. Topography: The land surface in the vicinity of the wellsite is on a caliche hill.
- B. Flora and Fauna: The vegetation cover consists of prairie grass, greasewood and miscellaneous desert growth. No wildlife was observed, but wildlife in the area probably includes those typical of semi-arid desert land. The area is used for cattle grazing.
- C. There are no ponds, lakes or rivers in the area.
- D. There are no inhabited dwellings in the vicinity of the proposed well.
- E. Surface Ownership: The wellsite is on federal surface.
- F. Evidence of archeological sites has been reported and previously filed.

12. OPERATOR' REPRESENTATIVE

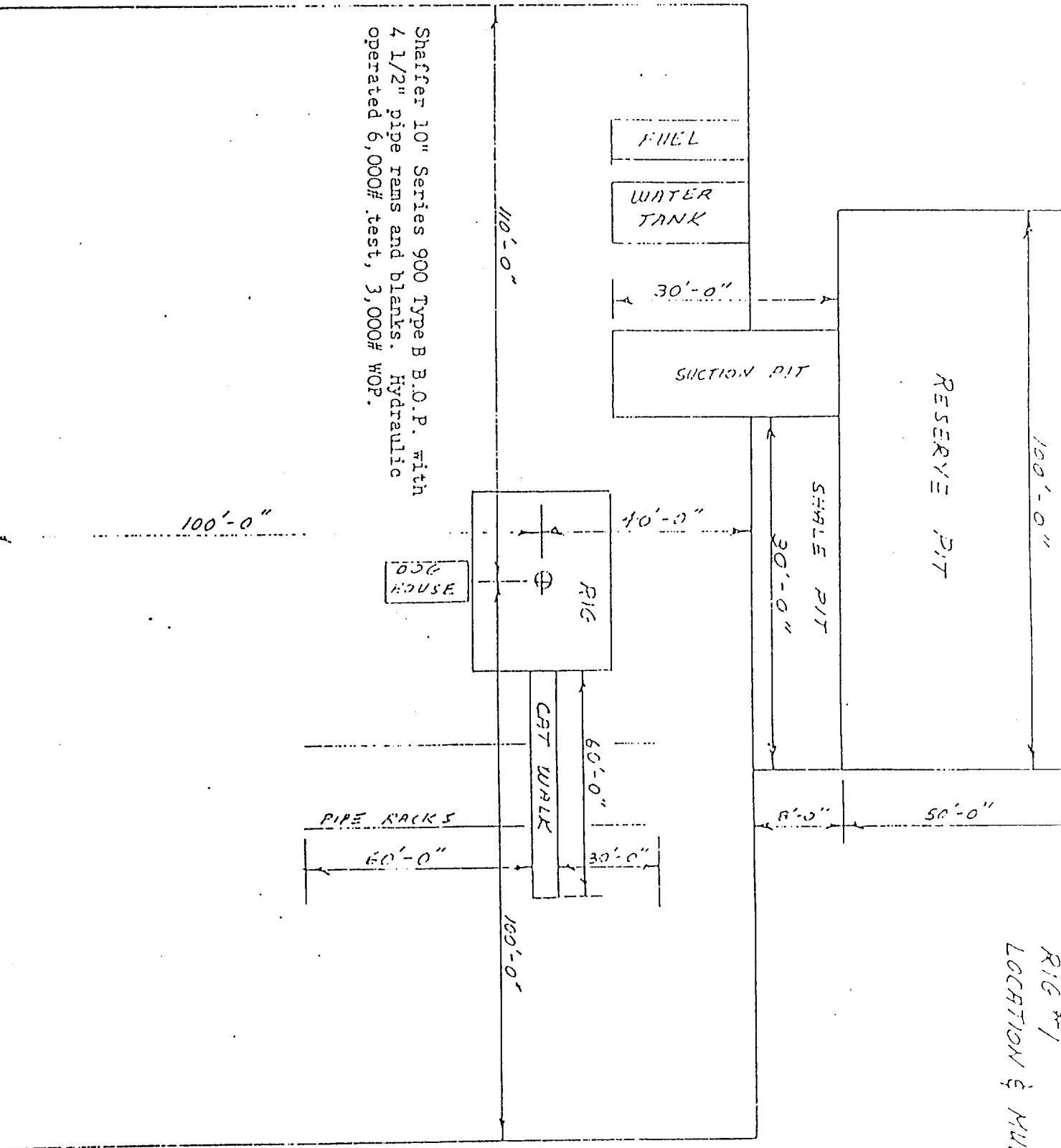
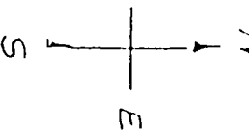
Ray Westall
P.O. Box 4,
Loco Hills, NM 88255
(505) 677-2370

13. CERTIFICATION.

I hereby certify that I, or persons under my direct supervision, have inspected the proposed drillsite and access route, that I am familiar with the conditions which presently exist; that the statements made in this plan are to the best of my knowledge true and correct; and that the work associated with the operations proposed herein will be performed by the operator and its subcontractors in conformity with this plan and the terms and conditions under which it is approved.



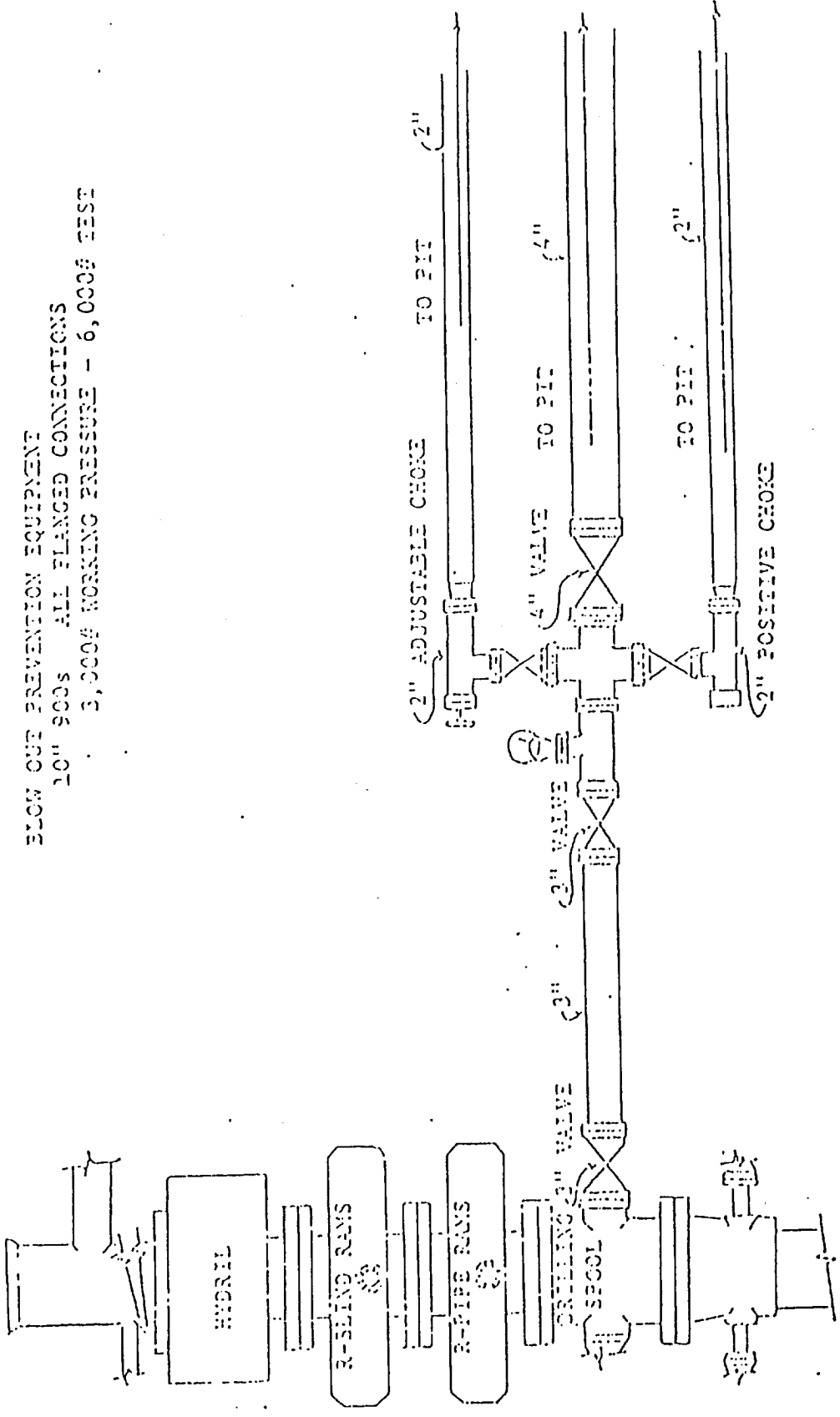
Randall L. Harris



Shaffer 10" Series 900 Type B B.O.P. with
4 1/2" pipe rams and blanks. Hydraulic
operated 6,000# test, 3,000# WOP.

RIG #1
LOCATION & MUD PIT SPECS.

BLOW OUT PREVENTION EQUIPMENT
 10" SCOS ALL FLANGED CONNECTIONS
 3,000# WORKING PRESSURE - 6,000# TEST



ATTACHMENT TO FORM C-101

35
Map showing the location of the Ray Westall Trigg Federal Well No. 10 and Access Road R/W, T18S, R30E, Section 35, Eddy County, New Mexico (BLM, Roswell District, Carlisbad Resource Area, N.M.J. Squares show locations of well pads; solid line shows location of access road R/W; blackened area shows location of site. U.S.G.S. 7.5 minute series, HACKBERRY LAKE, NEW MEXICO, 1985. ASC Project 90-152.

