

DISTRICT I
P.O. Box 1980, Hobbs, NM 88240

State of New Mexico
Energy, Minerals and Natural Resources Department

Form C-102
Revised February 10, 1994
Instruction on back
Submit to Appropriate District Office
State Lease - 4 Copies
Fee Lease - 3 Copies

DISTRICT II
P.O. Drawer DD, Artesia, NM 88210

OIL CONSERVATION DIVISION

DISTRICT III
1300 Rio Brazos Rd., Artec, NM 87410

P.O. Box 2088
Santa Fe, New Mexico 87504-2088

AMENDED REPORT

WELL LOCATION AND ACREAGE DEDICATION PLAT

API Number	Pool Code 51300	Pool Name Red Lake (Q-GB-SA)
Property Code	Property Name WINDFOHR "4" FEDERAL	Well Number 2
OGRID No. 6137	Operator Name DEVON ENERGY CORPORATION	Elevation 3578'

Surface Location

UL or lot No.	Section	Township	Range	Lot Idn	Feet from the	North/South line	Feet from the	East/West line	County
LOT 13	4	18 S	27 E		1850	SOUTH	330	EAST	EDDY

Bottom Hole Location If Different From Surface

UL or lot No.	Section	Township	Range	Lot Idn	Feet from the	North/South line	Feet from the	East/West line	County

Dedicated Acres	Joint or Infill	Consolidation Code	Order No.

NO ALLOWABLE WILL BE ASSIGNED TO THIS COMPLETION UNTIL ALL INTERESTS HAVE BEEN CONSOLIDATED OR A NON-STANDARD UNIT HAS BEEN APPROVED BY THE DIVISION

LOT 8	LOT 7	LOT 6	LOT 5
LOT 9	LOT 10	LOT 11	LOT 12
LOT 16	LOT 15	LOT 14	LOT 13
LOT 17	LOT 18	LOT 19	LOT 20

OPERATOR CERTIFICATION

I hereby certify the the information contained herein is true and complete to the best of my knowledge and belief.

E.L. Buttross Jr.
Signature

E.L. Buttross, Jr.
Printed Name

District Engineer
Title

8/25/98
Date

SURVEYOR CERTIFICATION

I hereby certify that the well location shown on this plat was plotted from field notes of actual surveys made by me or under my supervision, and that the same is true and correct to the best of my belief.

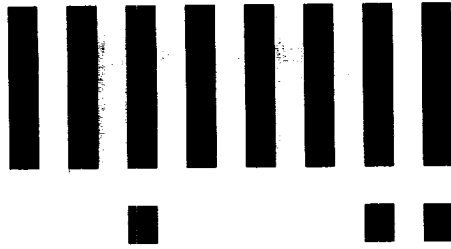
August 11, 1998
Date Surveyed

GARY L. JONES
Signature & Seal of Professional Surveyor

7977
M.O. No. 829751

Certificate No. Gary L. Jones 7977
PROFESSIONAL SURVEYOR

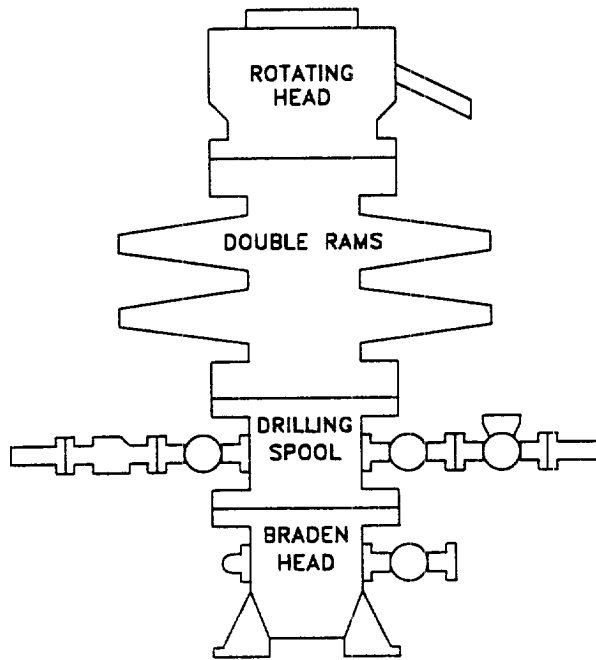
BASIN SURVEYS



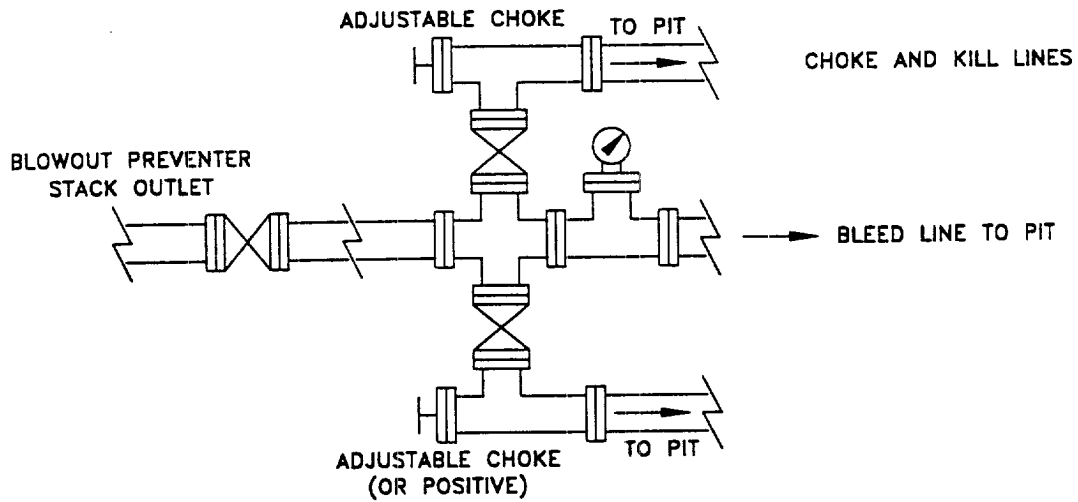
LTR



Job separation sheet



CHOKE MANIFOLD REQUIREMENT (2000 psi WP)



WEST RED LAKE AREA
EDDY COUNTY, NEW MEXICO

SCHEMATIC
BLOWOUT PREVENTOR
(2000 PSI MINIMUM WP)

Q:\...PROJECTS\EXPANDED

WRI BOP	

EB