

District I
1625 N. French Dr., Hobbs, NM 88240
District II
811 South First, Artesia, NM 88210
District III
1000 Rio Brazos Road, Aztec, NM 87410
District IV
2040 South Pacheco, Santa Fe, NM 87505

State of New Mexico
Energy Minerals and Natural Resources

Form C-101
Revised March 17, 1999

Oil Conservation Division
2040 South Pacheco
Santa Fe, NM 87505

Submit to appropriate District Office
State Lease - 6 Copies
Fee Lease - 5 Copies

AMENDED REPORT

APPLICATION FOR PERMIT TO DRILL, RE-ENTER, DEEPEN, PLUGBACK, OR ADD A ZONE

¹ Operator Name and Address OXY USA WTP Limited Partnership P.O. Box 50250 Midland, TX 79710-0250		² OGRID Number 192463
		³ API Number 30-015-31611
³ Property Code 27492	⁵ Property Name OXY Smokey State	⁶ Well No. 1

⁷ Surface Location

UL or lot no.	Section	Township	Range	Lot Idn	Feet from the	North/South line	Feet from the	East/West line	County
F	36	18S	30E		1780	North	1980	West	Eddy

⁸ Proposed Bottom Hole Location If Different From Surface

UL or lot no.	Section	Township	Range	Lot Idn	Feet from the	North/South line	Feet from the	East/West line	County
⁹ Proposed Pool 1 Wild cat Undesignated Morrow					¹⁰ Proposed Pool 2				

¹¹ Work Type Code N	¹² Well Type Code G	¹³ Cable/Rotary R	¹⁴ Lease Type Code S - B02023	¹⁵ Ground Level Elevation 3543'
¹⁶ Multiple No	¹⁷ Proposed Depth 12500'	¹⁸ Formation Morrow	¹⁹ Contractor UTI	²⁰ Spud Date 4/1/01

²¹ Proposed Casing and Cement Program

Hole Size	Casing Size	Casing weight/foot	Setting Depth	Sacks of Cement	Estimated TOC
17-1/2"	13-3/8"	48#	650'	550	Surface
12-1/4"	9-5/8"	36#	3600'	900	Surface
8-3/4"	5-1/2"	17#	12500'	775	8800'

²² Describe the proposed program. If this application is to DEEPEN or PLUG BACK, give the data on the present productive zone and proposed new productive zone. Describe the blowout prevention program, if any. Use additional sheets if necessary.

SEE OTHER SIDE

RECEIVED
OCD ARTESIA

²³ I hereby certify that the information given above is true and complete to the best of my knowledge and belief. Signature: <i>David Stewart</i>	OIL CONSERVATION DIVISION	
	Approved by: ORIGINAL SIGNED BY TIM W. GUM DISTRICT II SUPERVISOR <i>Tim W. Gum</i>	Title:
Printed name: David Stewart	Approval Date: FEB 19 2001	Expiration Date: FEB 19 2002
Title: Regulatory Analyst	Conditions of Approval:	
Date: 2/14/01	Phone: 915-685-5717	Attached <input type="checkbox"/>

OXY Smokey State #1
1780 FNL 1980 FWL SEC 36 T18S R30E Eddy County, NM
State Lease No.

PROPOSED TD: 12500' TVD

BOP PROGRAM: 0' - 650' None

650' - 3600' 13-5/8" 5M blind and pipe rams with 5M annular preventer.

3600' - 12500' 11" 5M blind pipe rams with 5M annular preventer and rotating head below 8300'.

CASING: Surface: 13-3/8" OD 48# H40 ST&C new casing set at 650'
17-1/2" hole

Intermediate: 9-5/8" OD 36# K55 ST&C new casing from 0-3600'
12-1/4" hole

Production: 5-1/2" OD 17# N80-S95 LT&C new casing from 0-12500'
8-3/4" hole

CEMENT: Surface - Circulate cement with 350sx 35:65 POZ/C with 6% Bentonite + 2% CaCl₂ + .25#/sx Cello-Seal followed by 200sx Cl C with 2% CaCl₂.

Intermediate - Circulate cement with 700sx 35:65 POZ/C with 6% Bentonite + 2% CaCl₂ + .25#/sx Cello-Seal followed by 200sx Cl C with 2% CaCl₂.

Production - Cement with 700sx 15:61:11 POZ/C/CSE with .5% FL-52 + .5% FL-25 + 8#/sx Gilsonite followed by 75sx Cl C with .7% FL-25. Estimated top of cement is 8800'.

Note: Cement volumes may need to be adjusted to hole caliper.

MUD: 0 - 650' Fresh water/native mud. Lime for pH control (9-10). Paper for seepage.
Wt 8.7-9.2 ppg, Vis 32-34 sec

600' - 3600' Fresh/*Brine water. Lime for pH control (10.0-10.5). Paper for seepage.
Wt 8.3-9.0/10.0-10.1ppg, Vis 28-29 sec
*Fresh water will be used unless chlorides in the mud system increases to 20000PPM.

3600' - 8300' Fresh water. Lime for pH control(9-9.5). Paper for seepage.
Wt 8.3-8.5 ppg, Vis 28-29 sec

8300' - 10000' Cut brine. Lime for pH control (10-10.5).
Wt 9.6-10.0 ppg, Vis 28-29sec

10000' - 12500' Mud up with an Duo Vis/Flo Trol mud system.
Wt 9.6-10.0ppg, Vis 32-36sec, WL<10cc

DISTRICT I
1825 N. French Dr., Hobbs, NM 88240

DISTRICT II
811 South First, Artesia, NM 88210

DISTRICT III
1000 Rio Brazos Rd., Aztec, NM 87410

DISTRICT IV
2040 South Pacheco, Santa Fe, NM 87505

State of New Mexico
Energy, Minerals and Natural Resources Department

Form C-102
Revised March 17, 1999

Submit to Appropriate District Office
State Lease - 4 Copies
Fee Lease - 3 Copies

OIL CONSERVATION DIVISION

2040 South Pacheco
Santa Fe, New Mexico 87504-2088

AMENDED REPORT

WELL LOCATION AND ACREAGE DEDICATION PLAT

API Number 30-015-	Pool Code	Pool Name Undesignated Morrow
Property Code	Property Name OXY SMOKEY STATE	Well Number 1
OGRID No. 192463	Operator Name OXY USA WTP Limited Partnership	Elevation 3543'

Surface Location

UL or lot No.	Section	Township	Range	Lot Idn	Feet from the	North/South line	Feet from the	East/West line	County
F	36	18 S	30 E		1780	NORTH	1980	WEST	EDDY

Bottom Hole Location If Different From Surface

UL or lot No.	Section	Township	Range	Lot Idn	Feet from the	North/South line	Feet from the	East/West line	County

Dedicated Acres	Joint or Infill	Consolidation Code	Order No.
320	N		

NO ALLOWABLE WILL BE ASSIGNED TO THIS COMPLETION UNTIL ALL INTERESTS HAVE BEEN CONSOLIDATED OR A NON-STANDARD UNIT HAS BEEN APPROVED BY THE DIVISION

YATES
State BJ-1
3001520649

OPERATOR CERTIFICATION

I hereby certify that the information contained herein is true and complete to the best of my knowledge and belief.

David Stewart

Signature
David Stewart

Printed Name
Regulatory Analyst

Title
2/14/01

Date

SURVEYOR CERTIFICATION

I hereby certify that the well location shown on this plat was plotted from field notes of actual surveys made by me or under my supervision, and that the same is true and correct to the best of my belief.

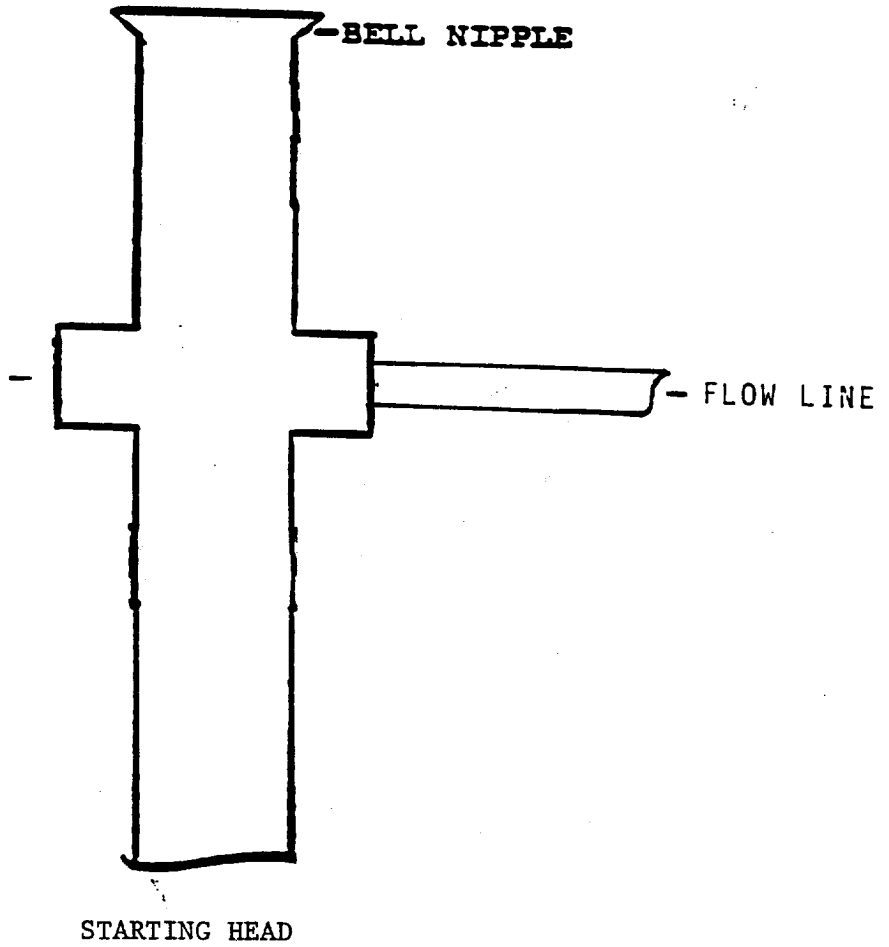
January 11, 2001

Date Surveyed
Signature & Seal of
Professional Surveyor
GARY L. JONES
NEW MEXICO
7977
W.C. No. 0720A
Certificate No. Gary L. Jones 7977
PROFESSIONAL LAND SURVEYOR
BASIN SURVEYS

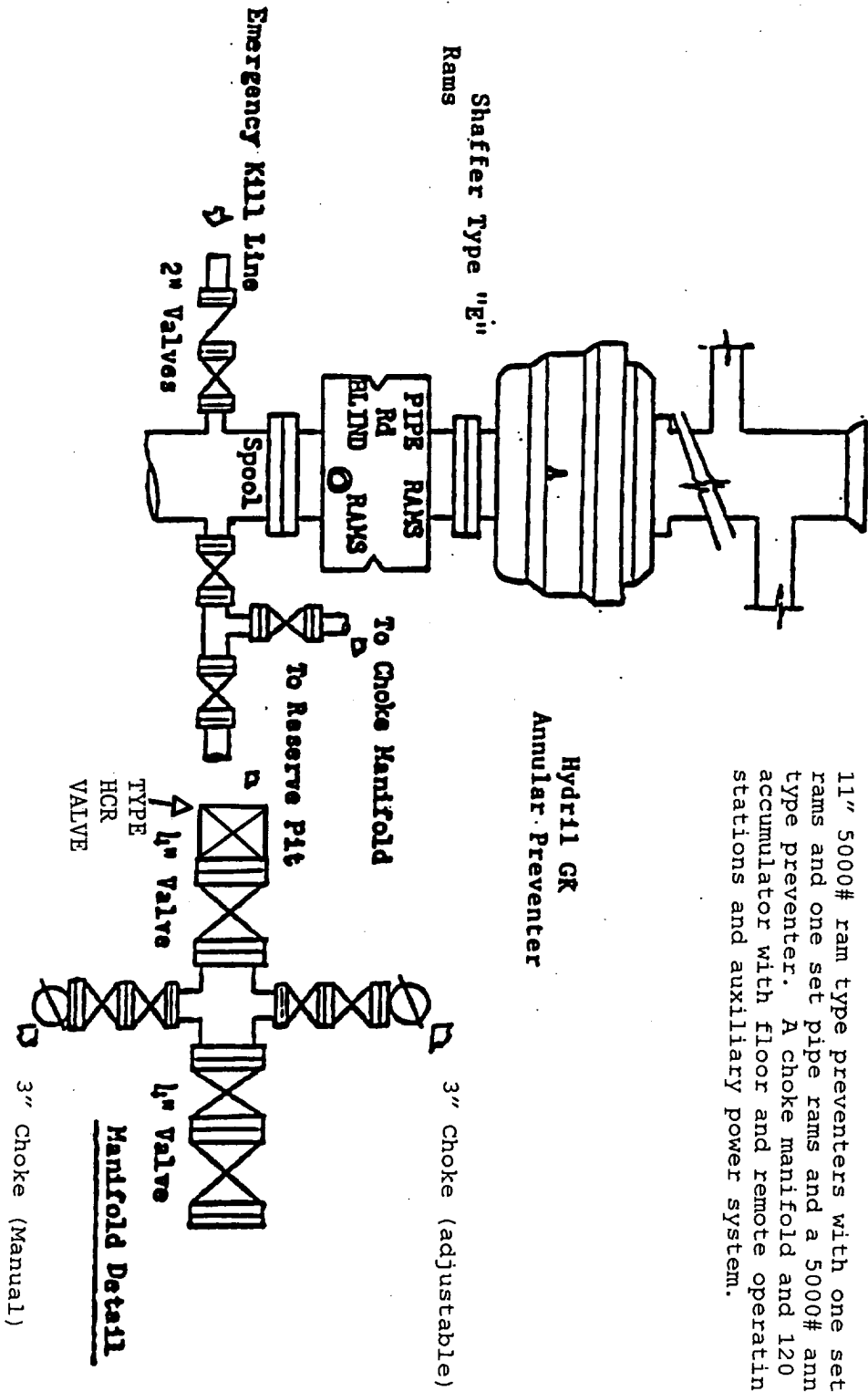
RECEIVED
OCD - ARTESIA

EXHIBIT A

ANNULAR PREVENTOR
TO BE USED AS DIVERTOR ONLY



BLOWOUT PREVENTOR SCHEME



11" 5000# ram type preventers with one set blind rams and one set pipe rams and a 5000# annular type preventer. A choke manifold and 120 gallon accumulator with floor and remote operating stations and auxiliary power system.

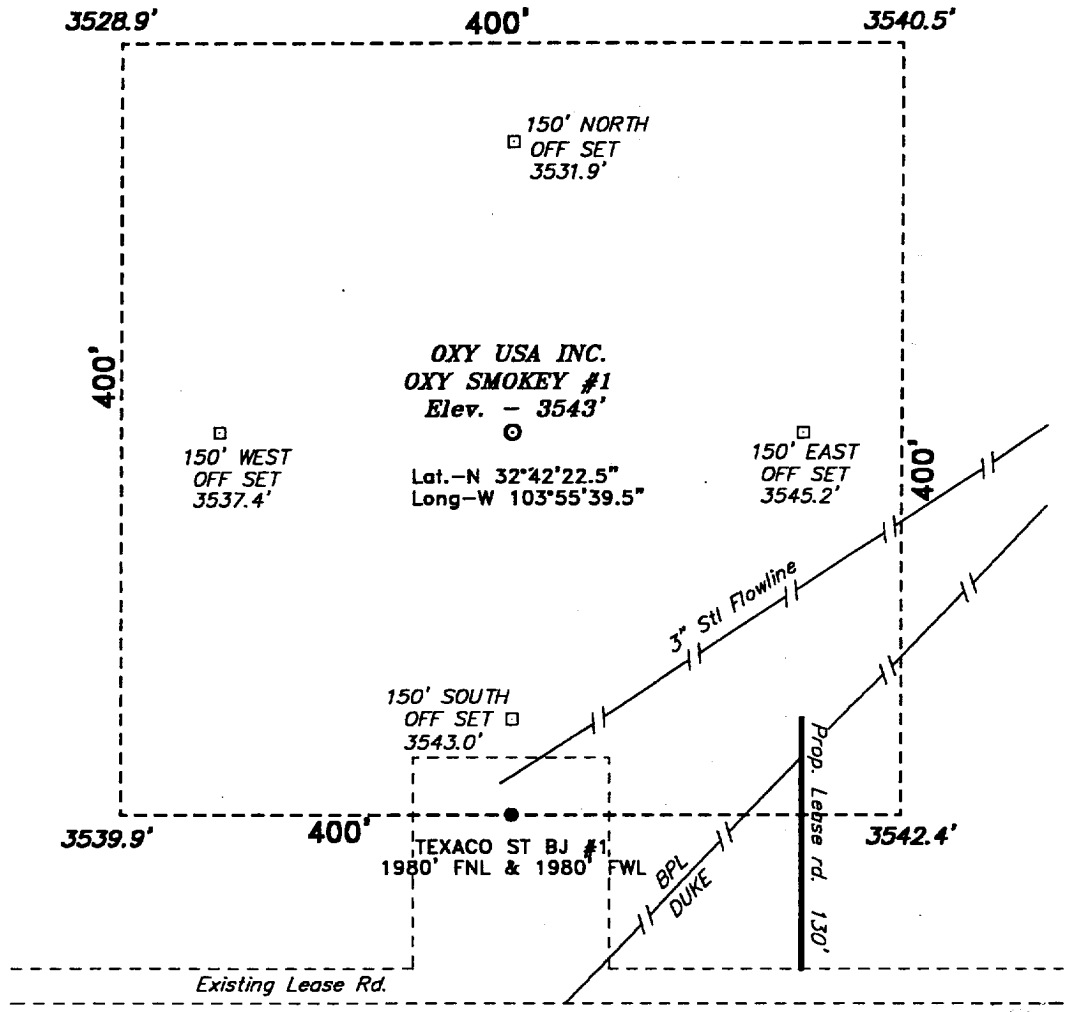
Hydril GK
Annular Preventer

Shaffer Type "E"
Rams

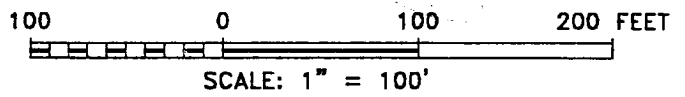
3" Choke (adjustable)
3" Choke (Manual)
Manifold Detail
4" Valve
4" Valve
TYPE HCR VALVE

Choke Manifold

**SECTION 36, TOWNSHIP 18 SOUTH, RANGE 30 EAST, N.M.P.M.,
EDDY COUNTY, NEW MEXICO.**



RECEIVED
OCD - ARTESIA



Directions to Location:

FROM THE JUNCTION OF CO. RD. 222 AND CO. RD. 250, GO WEST ON CO. RD. 250 APPROX. 2.75 MILES TO A LEASE ROAD; THENCE SOUTH AND WEST ON LEASE ROAD APPROX. 1700 FEET TO A PROPOSED LEASE ROAD WHICH LIES 130 FEET SOUTH OF THE PROPOSED WELL PAD.

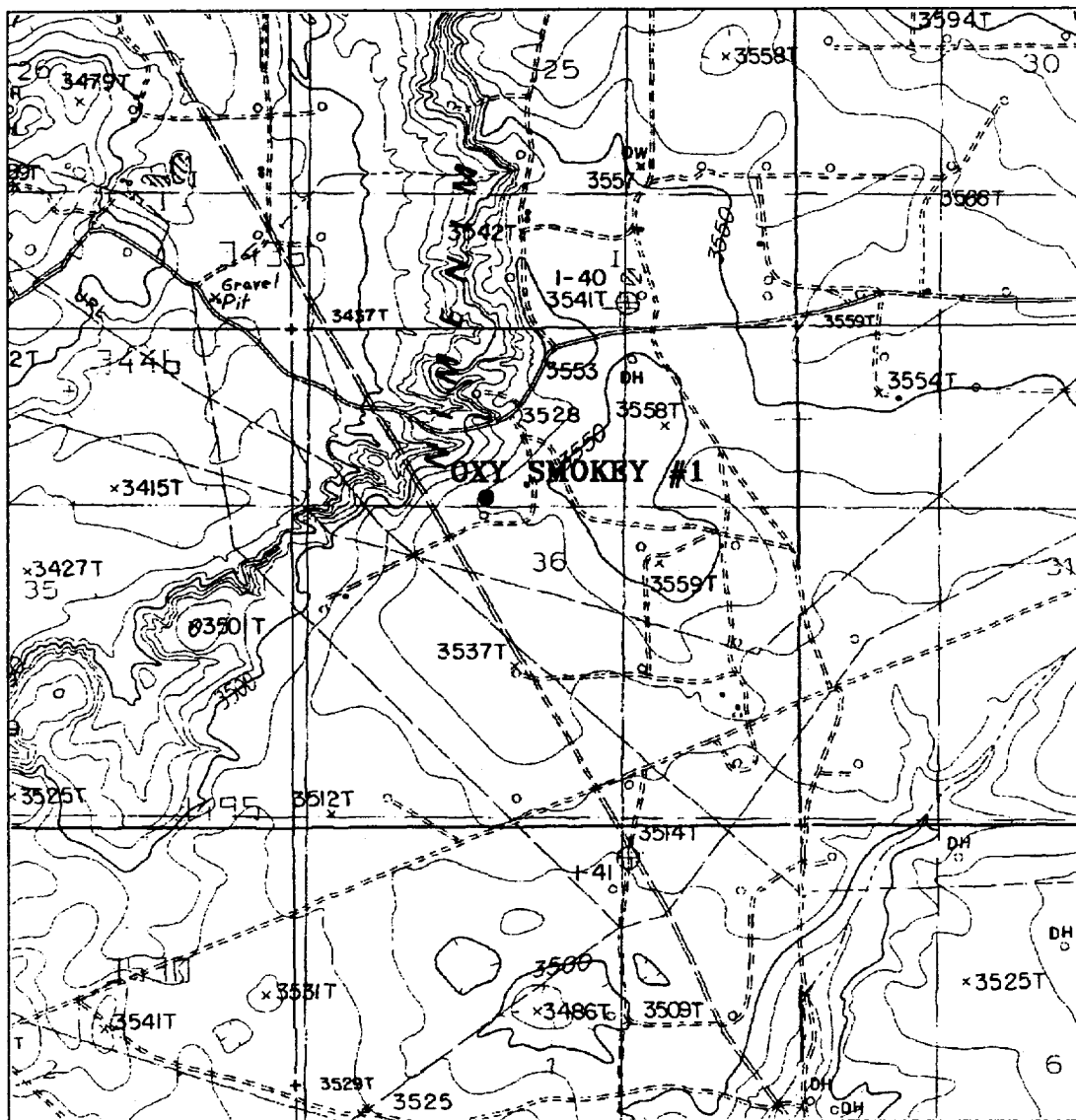
Oxy USA Inc.	
REF: Oxy Smokey No. 1 / Well Pad Tapo	
THE OXY SMOKEY No. 1 LOCATED 1780' FROM THE NORTH LINE AND 1980' FROM THE WEST LINE OF SECTION 36, TOWNSHIP 18 SOUTH, RANGE 30 EAST, N.M.P.M., EDDY COUNTY, NEW MEXICO.	

BASIN SURVEYS P.O. BOX 1786 - HOBBS, NEW MEXICO

W.O. Number: 0720 Drawn By: **K. GOAD**

Date: 01-12-2001 Disk: KJG CD#3 - 0720.DWG

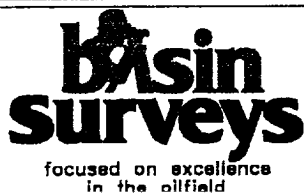
Survey Date: 01-11-2001 Sheet 1 of 1 Sheets



OXY SMOKEY #1

Located at 1780' FNL and 1980' FWL
 Section 36, Township 18 South, Range 30 East,
 N.M.P.M., Eddy County, New Mexico.

RECEIVED
 OED. AREA



P.O. Box 1786
 1120 N. West County Rd.
 Hobbs, New Mexico 88241
 (505) 393-7316 - Office
 (505) 392-3074 - Fax
 basinsurveys.com

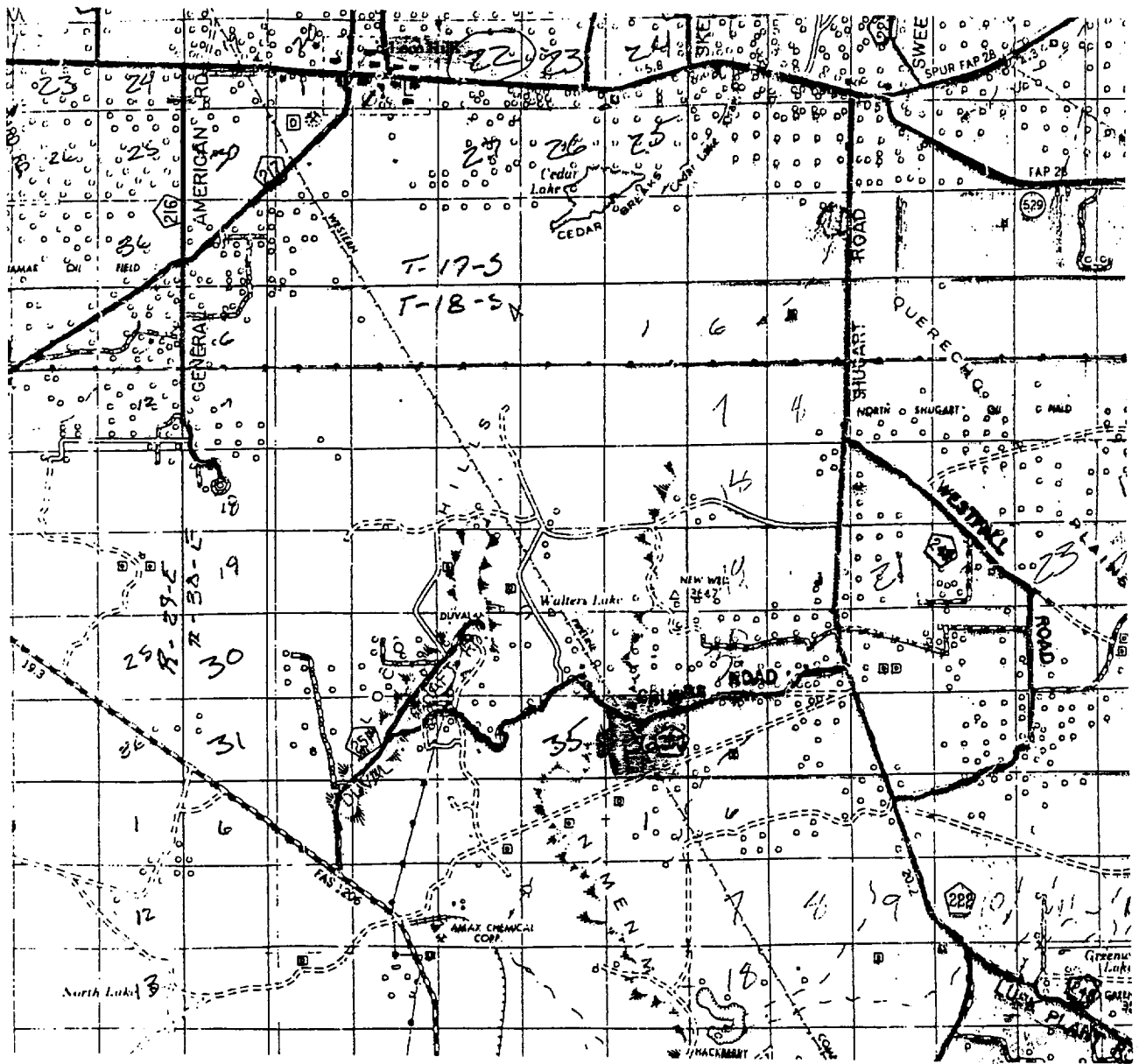
W.O. Number: 0720AA - KJG CD#3

Survey Date: 01-11-2001

Scale: 1" = 2000'

Date: 01-12-2001

OXY USA INC.



OXY SMOKEY #1
 Located at 1780' FNL and 1980' FWL
 Section 36, Township 18 South, Range 30 East,
 N.M.P.M., Eddy County, New Mexico.

RECEIVED
 OGD AREA

Basin surveys
 focused on excellence
 in the oilfield

P.O. Box 1786
 1120 N. West County Rd.
 Hobbs, New Mexico 88241
 (505) 393-7316 - Office
 (505) 392-3074 - Fax
 basinsurveys.com

W.O. Number:	0720AA - KJG CD#3
Survey Date:	01-11-2001
Scale:	1" = 2 MILES
Date:	01-12-2001

OXY USA INC.