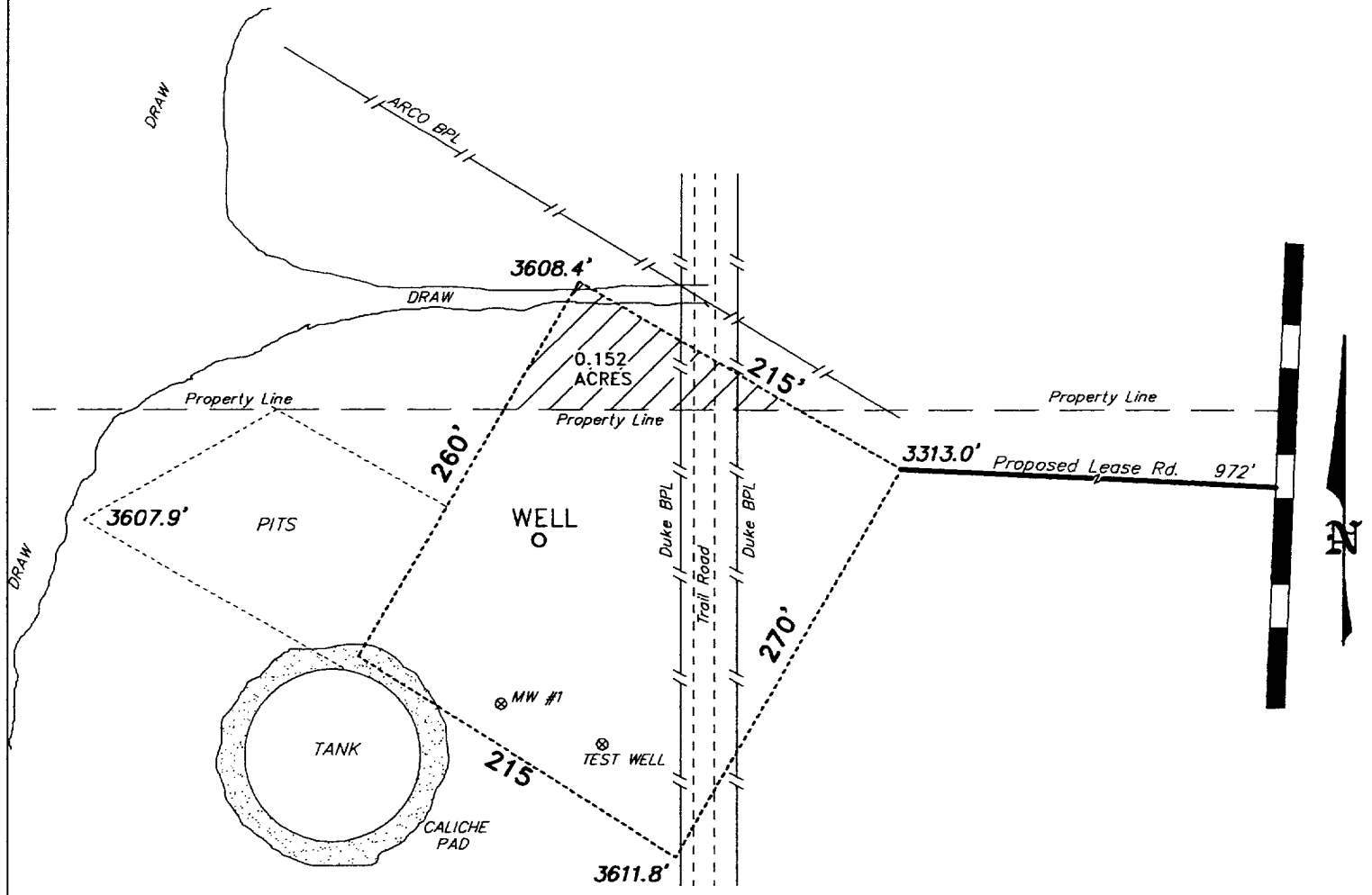
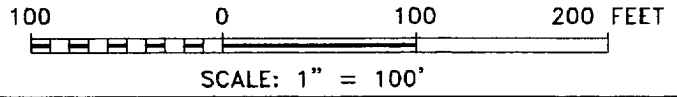


**SECTION 7, TOWNSHIP 18 SOUTH, RANGE 28 EAST, N.M.P.M.,
EDDY COUNTY, NEW MEXICO.**



DUKE ENERGY FIELD SERVICES
 AGI #1
 ELEV. - 3611'
 Lat - N32°45'28.7"
 Lon - W104°12'45.8"



DUKE ENERGY FIELD SERVICES	
REF: AGI No. 1 / Well Pad Topo	
THE AGI No. 1 LOCATED 1232' FROM THE SOUTH LINE AND 1927' FROM THE EAST LINE OF SECTION 7, TOWNSHIP 18 SOUTH, RANGE 28 EAST, N.M.P.M., EDDY COUNTY, NEW MEXICO.	
W.O. Number: 2471	Drawn By: K. GOAD
Date: 04-22-2002	Disk: KJG CD#6 - 2471A.DWG
Survey Date: 04-18-2002	Sheet 1 of 1 Sheets

Basin Surveys P.O. BOX 1786 - HOBBS, NEW MEXICO