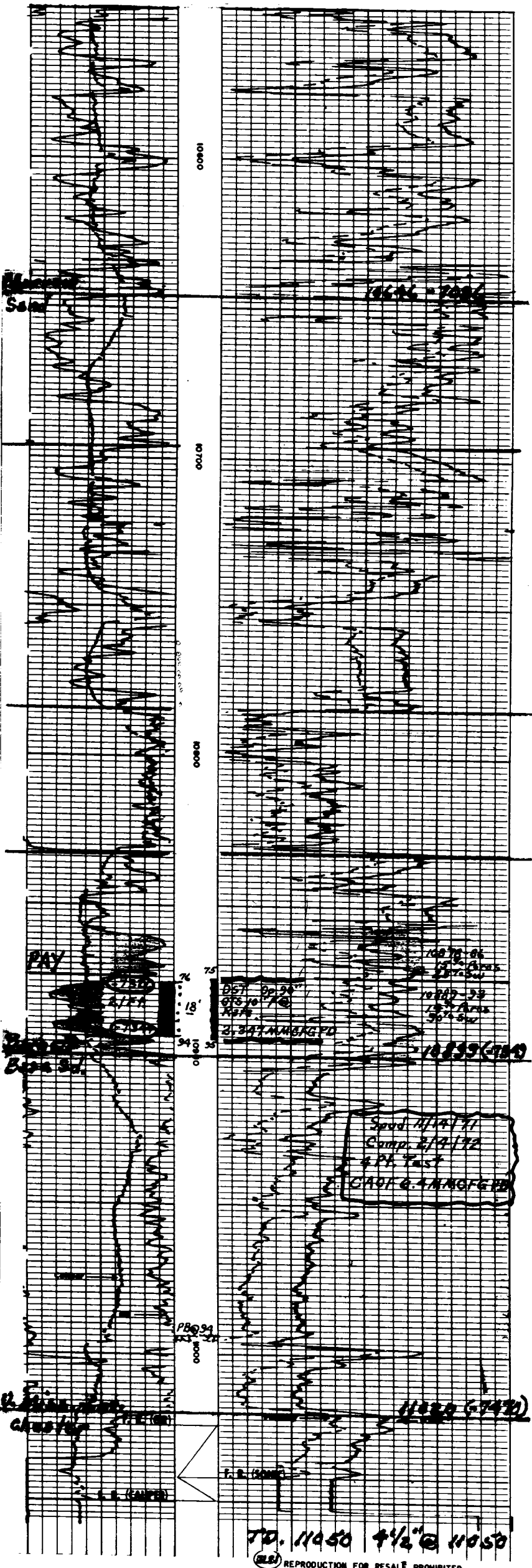


BOREHOLE COMPENSATED SONIC LOG - GAMMA RAY

umberger

COUNTY EDDY FIELD WILDCAT LOCATION MILLMAN DEEP UNIT WELL COMPANY HANAGAN PETROLEUM CORPORATION	COMPANY HANAGAN PETROLEUM CORPORATION	
	WELL MILLMAN DEEP UNIT 1	
	FIELD WILDCAT	
	COUNTY EDDY	STATE NEW MEXICO
LOCATION 660' FNL & 1924' FEL		Other Services:
Sec. 4 Twp. 19-S Rge. 28-E		DIL
Permanent Datum: G.L., Elev. 3538		Elev.: K.B. 3550 ✓
Log Measured From K.B., 12 Ft. Above Perm. Datum		D.F.
Drilling Measured From K.B.		G.I. 3538
Date	1-1-72	
Run No.	ONE	
Depth-Driller	11050	
Depth-Logger	11052	
Strm. Log Interval	11050	
Top Log Interval	0	
Casing-Driller	9 5/8 @ 2764	
Casing-Logger	2747	
Bit Size	8 3/4	
Type Fluid in Hole	CHEM	
Dens.	Visc.	9 40
pH	Fluid Loss	10.5 11.8 ml
Source of Sample	PIT	
R ₁₀ @ Meas. Temp	2.2 @ 67 °F	
R ₁₀₀ @ Meas. Temp	1.9 @ 69 °F	
R ₁₀₀₀ @ Meas. Temp	2.4 @ 69 °F	
Source: R ₁₀ R ₁₀₀ R ₁₀₀₀	M M M	
R ₁₀ @ BHT	1.0 @ 150 °F	
Time Since Circ.	4 HOURS	
Max. Rec. Temp.	150 °F	
Equip. Location	7031 HOBBS	
Recorded By	WILLSON	
Witnessed By	HANAGAN	

The well name, location and borehole reference data were furnished by the customer.



3-1-72 Case 4: 74
 EXHIBIT "B" 4205
 LOG SECTION OF MORROW
 Hanagan Petroleum Corporation
 No. 1 Millman Deep Com
 Eddy County, New Mexico

