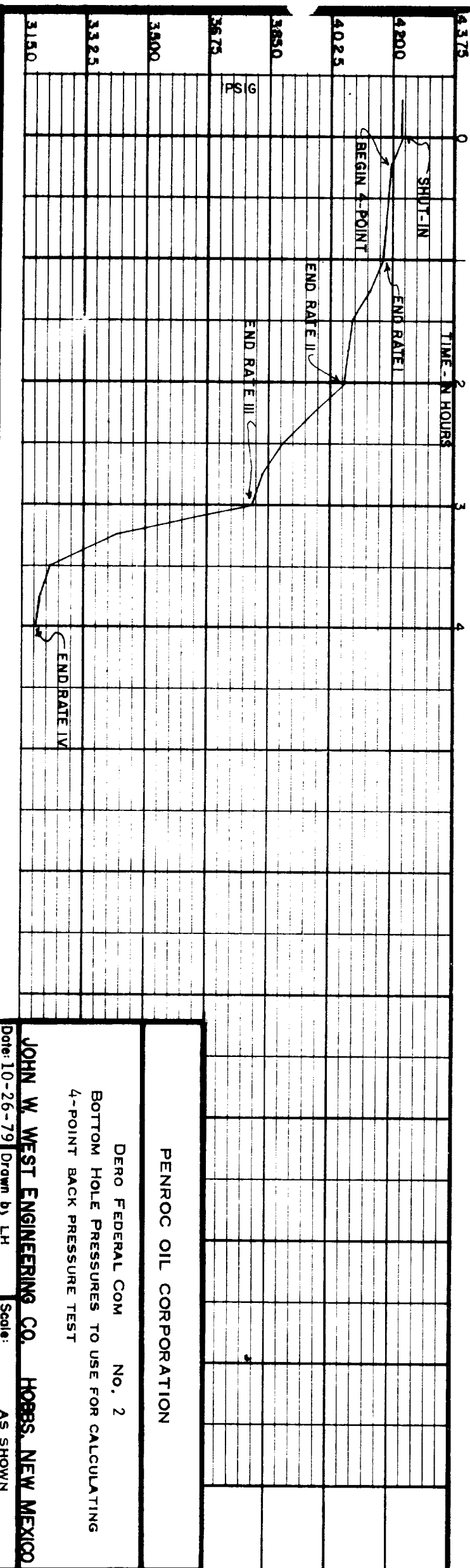


TEST DATE: OCTOBER 22, 1979
 TEST DEPTH: 11,173 FEET

ELEMENT NO.: 12809
 RANGE: 0-5650 PSI
 CLOCK NO.: 4052
 RANGE: 0-24 HOUR

NOTE: SEE TABULATION OF PRESSURE AND TIME ON ATTACHED SHEET.



PENROC OIL CORPORATION

DERO FEDERAL COM NO. 2

BOTTOM HOLE PRESSURES TO USE FOR CALCULATING
 4-POINT BACK PRESSURE TEST

JOHN W. WEST ENGINEERING CO. HOBS, NEW MEXICO

Date: 10-26-79 Drawn by LH Scale: AS SHOWN